

GENERAL NOTES

NOTES ON THESE DRAWINGS ARE NOT INTENDED TO REPLACE SPECIFICATIONS. SEE SPECIFICATIONS FOR REQUIREMENTS IN ADDITION TO DRAWING NOTES.

STRUCTURAL DRAWINGS SHALL BE USED IN CONJUNCTION WITH PROJECT SPECIFICATIONS AND THE ARCHITECTURAL, MECHANICAL, ELECTRICAL, PLUMBING, FIRE PROTECTION, EQUIPMENT, SITE AND SHOP DRAWINGS. CONSULT THESE DRAWINGS FOR LOCATIONS AND DIMENSIONS OF CHASES, INSERTS, SLEEVES, DEPRESSIONS AND OTHER DETAILS NOT SHOWN ON THE STRUCTURAL DRAWINGS.

ALL DIMENSIONS, ELEVATIONS AND CONDITIONS MUST BE VERIFIED IN THE FIELD BY THE GENERAL CONTRACTOR. ANY DISCREPANCY SHALL BE BROUGHT TO THE ATTENTION OF THE ENGINEER BEFORE PROCEEDING WITH THE AFFECTED PART OF THE WORK. THE CONTRACTOR SHALL DETERMINE ALL NECESSARY DIMENSIONS, ELEVATIONS AND CONDITIONS REQUIRED FOR THE FABRICATION AND ERECTION OF THE BUILDING'S COMPONENTS PRIOR TO THE SUBMISSION OF SHOP DRAWINGS. ALL SHOP DRAWINGS SHALL ACCURATELY REFLECT THE GENERAL CONTRACTOR'S VERIFICATION OF FIELD CONDITIONS.

SHOP DRAWINGS SHALL BE ORIGINAL DRAWINGS PREPARED BY THE GENERAL CONTRACTOR OR A SUBCONTRACTOR. REPRODUCTION OF ANY STRUCTURAL DRAWING FOR USE AS A SHOP DRAWING IS NOT ACCEPTABLE.

THE STRUCTURE IS DESIGNED TO BE SELF-SUPPORTING AND STABLE AFTER THE BUILDING IS COMPLETE. IT IS SOLELY THE GENERAL CONTRACTOR'S RESPONSIBILITY TO DETERMINE ERECTION PROCEDURES AND SEQUENCING TO ENSURE THE SAFETY OF THE BUILDING AND ITS COMPONENTS DURING ERECTION. THIS INCLUDES THE ADDITION OF NECESSARY SHORING, SHEETING, TEMPORARY BRACING, GUYS AND/OR TIEDOWNS. SUCH MATERIAL SHALL REMAIN THE PROPERTY OF THE GENERAL CONTRACTOR AFTER COMPLETION OF THE BUILDING.

SECTIONS AND DETAILS SHOWN ON THE STRUCTURAL DRAWINGS SHALL BE CONSIDERED TYPICAL AND USED IN SIMILAR CONDITIONS.

THE GENERAL CONTRACTOR AND ALL SUBCONTRACTORS SHALL FOLLOW ALL APPLICABLE FEDERAL, STATE AND MUNICIPAL REGULATIONS INCLUDING THE FEDERAL DEPARTMENT OF LABOR OCCUPATIONAL SAFETY AND HEALTH ACT.

DESIGN CRITERIA

BUILDING CODE: 2009 INTERNATIONAL BUILDING CODE

DESIGN LOADS:

LIVE LOADS

RESIDENTIAL UNITS AND CORRIDORS SERVING THEM	40 PSF
STAIRS AND EXITS AND BALCONY	100 PSF
PUBLIC ROOMS AND CORRIDORS SERVING THEM	100 PSF

SNOW LOAD

GROUND SNOW LOAD, P_g	60 PSF
SNOW EXPOSURE FACTOR, C_e	1.0
SNOW LOAD IMPORTANCE FACTOR, I_s	1.0
THERMAL FACTOR, C_t	1.0
FLAT ROOF SNOW LOAD, P_f	42 PSF

WIND LOAD

BASIC WIND SPEED (3 SEC 60ST), V_{3s}	100 MPH
WIND IMPORTANCE FACTOR, I_w	1.0
BUILDING CATEGORY	I
EXPOSURE CATEGORY	B

EARTHQUAKE DESIGN DATA

SEISMIC IMPORTANCE FACTOR, I_e	1.0
MAPPED SPECTRAL RESPONSE ACCELERATIONS	
0.2 SEC PERIOD, $S_{0.2}$	0.241
1 SEC PERIOD, S_1	0.078

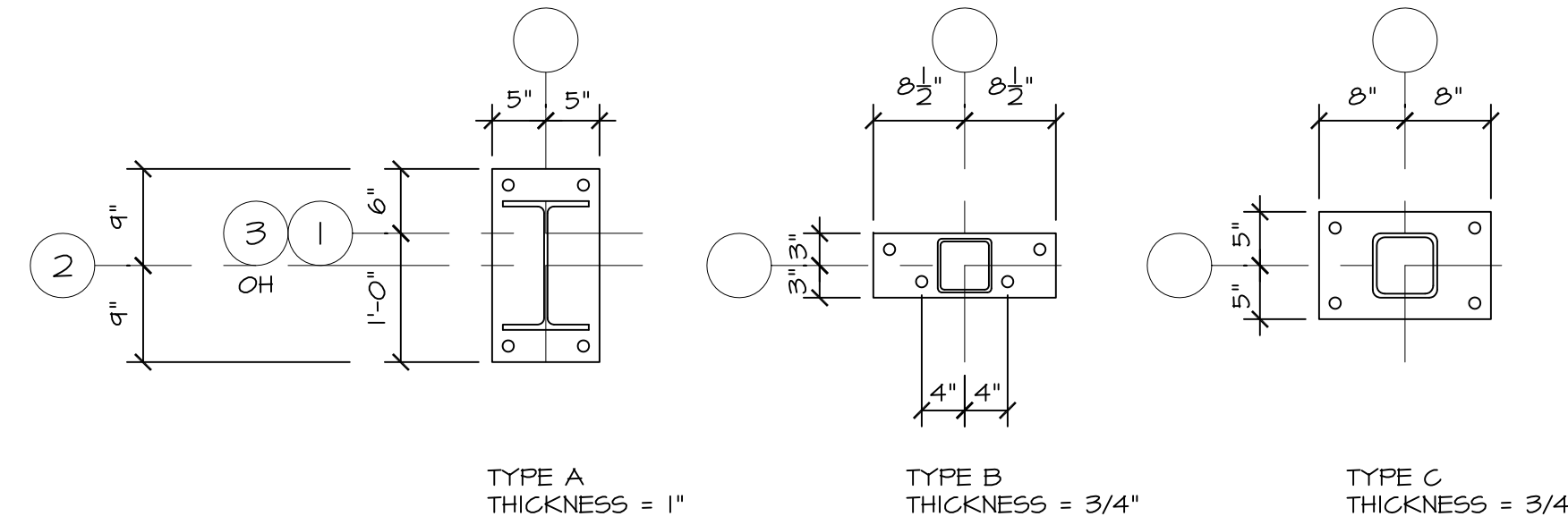
SITE CLASS

SPECTRAL RESPONSE COEFFICIENTS	C
0.2 PERIOD 5% DAMPED, S_{ds}	0.193
1 SEC PERIOD 5% DAMPED, S_{d1}	0.088
SEISMIC DESIGN CATEGORY	B
BASIC SEISMIC-FORCE-RESISTING SYSTEM	DUAL: LIGHT-FRAMED WALLS WITH SHEAR PANELS AND ORDINARY STEEL MOMENT FRAME

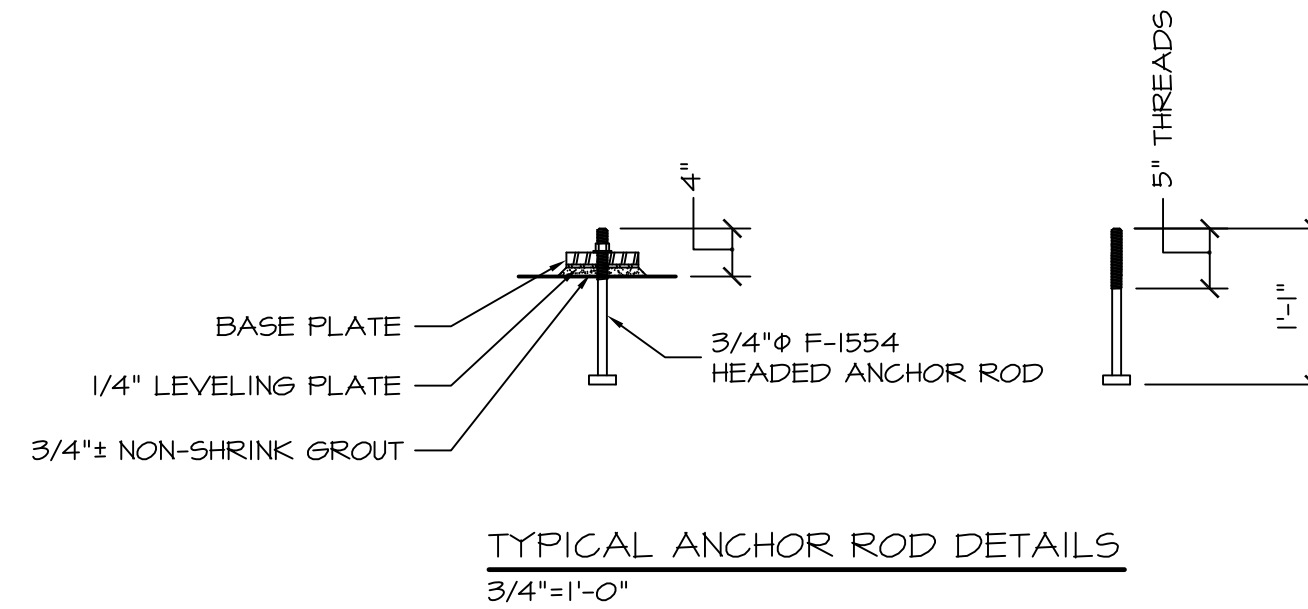
DESIGN BASE SHEAR

SEISMIC RESPONSE COEFFICIENT, C_s	15.2 KIPS
DEFLECTION AMPLIFICATION FACTOR, C_d	0.055
RESPONSE MODIFICATION COEFFICIENT, R	3.0
SYSTEM OVERSTRENGTH FACTOR, Ω	3.5
ANALYSIS PROCEDURE	3.0
	EQUIVALENT LATERAL FORCE

COLUMN SCHEDULE				
COLUMN MARK	SIZE	BOT. OF BASE PL. ELEV.	BASE PL TYPE	TOP OF COLUMN ELEV.
1-A	W12x40	92'-9"	A	108'-1 3/4"
2-A	W12x40	93'-9"	A	108'-1 3/4"
3-A	W12x40	94'-9"	A	108'-1 3/4"
1-B	H555x5x0.25	95'-1"	B	107'-9 1/4"
2-C	H556x6x0.25	97'-4 1/2"	C	107'-9 1/4"
3-B	H555x5x0.25	97'-9"	B	107'-9 1/4"

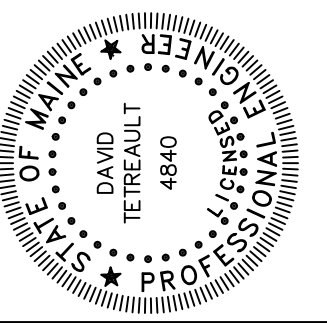


BASE PLATE DETAILS
 3/4"x1'-0"
 HOLE DIA = 1 1/16"
 HOLE EDGE DIST = 1 1/2" U.N.O.



TYPICAL ANCHOR ROD DETAILS
 3/4"x1'-0"

FOOTING SCHEDULE		
MARK	SIZE	REINFORCING
F1	4'-0" x 4'-0" x 1'-3"	5 #6 E.W. BOT.
F2	6'-0" x 6'-0" x 1'-3"	7 #6 E.W. BOT.



Prepared For:
TATE STREET PARTNERSHIP, LLC
 17 Chestnut Street
 Portland, Maine 04101

Consulting Engineer:
STRUCTURAL DESIGN CONSULTING
 2696 Lake Shore Road
 Unit 100
 Glen Falls, NY 12034
 Tel: 603.293.8038

Architect:
ARCHETYPE architects
 48 Union Wharf Portland, Maine 04101
 (207) 772-6022 Fax (207) 772-4056

Project:
WEST PORT LOFTS
 22-28 Tate Street
 Portland, Maine

Revisions:

Issued for Foundation Permit	03/21/16

Date: 21 MAR 2016
 Scale: As Noted
GENERAL NOTES AND SCHEDULES

S0.01