

REV.	DATE	DESCRIPTION
3	2/1/16	FINAL STAFF REVIEW, ADDED PAVT, CORRECT ADDRESS
2	11/18/15	REV'D PER STAFF REVIEW
1	11/8/15	REV'D PER STAFF COMMENTS

DEVELOPER:
TATE STREET PARTNERSHIP, LLC
3 CANAL PLAZA #501, PORTLAND

SCALE: AS SHOWN
DATE: OCTOBER 8, 2015
PROJECT: 15153

DRN BY: RJS/JDC
DESIGN BY: TSG
CHK BY: BG

WEST PORT LOFTS CONDOMINIUM
22-28 TATE STREET
PORTLAND, MAINE

DETAILS

C2.2

UNDERGROUND UTILITIES WARNING TAPE

IDENTIFICATION TAPE TO BE INSTALLED ABOVE ALL NEW UNDERGROUND UTILITIES AND ABOVE ANY EXISTING UTILITIES THAT MAY BE EXPOSED BY THIS CONSTRUCTION.

DETECTABLE UNDERGROUND MARKING TAPE TO BE PERMANENT, BRIGHT-COLORED, CONTINUOUS-PRINTED PLASTICIZED ALL-PURPOSE TAPE, INTENDED FOR DIRECT-BURIAL SERVICE NOT LESS THAN 3" WIDE X 5 MILS THICK. PROVIDE TAPE WITH BLACK PRINTING IDENTIFYING THE UTILITY. DETECTABLE WARNING TAPE REQUIRED OVER ALL WATER, SEWER, DRAINAGE, OR GAS UTILITIES. TAPE TO BE TERRA TAPE BY REEF INDUSTRIES, INC., www.reefindustries.com, OR EQUAL.

APWA UNIFORM COLOR CODE:

- | | |
|--------|---|
| WHITE | PROPOSED EXCAVATION |
| PINK | TEMPORARY SURVEY MARKINGS |
| RED | ELECTRIC POWER LINES, CABLES, CONDUIT AND LIGHTING CABLES |
| YELLOW | GAS, OIL, STEAM, PETROLEUM OR GASEOUS MATERIALS |
| ORANGE | COMMUNICATION, ALARM OR SIGNAL LINES, CABLES OR CONDUIT |
| BLUE | POTABLE WATER |
| PURPLE | RECLAIMED WATER, IRRIGATION AND SLURRY LINES |
| GREEN | SEWERS AND DRAIN LINES |

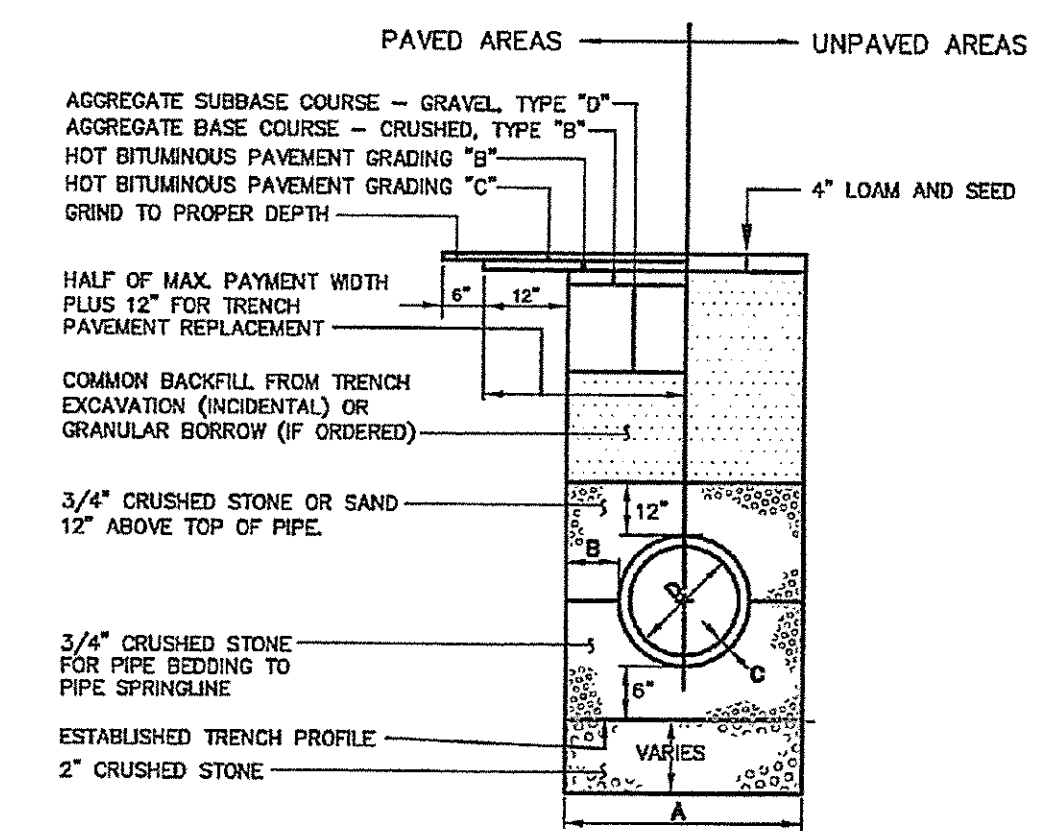
1 UNDERGROUND UTILITIES WARNING TAPE

GENERAL NOTES FOR MANHOLES AND CATCH BASINS

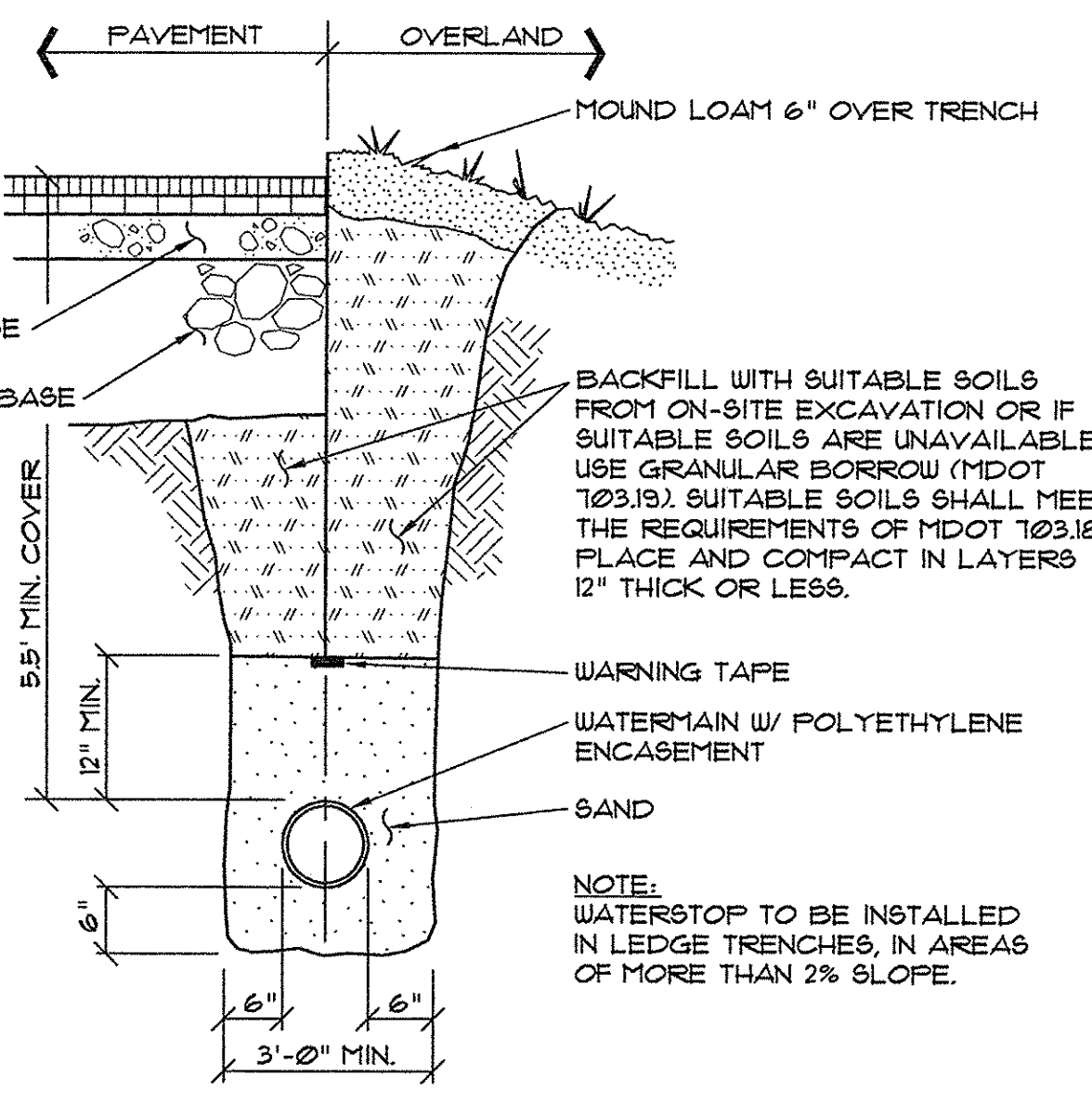
- ALL CONCRETE SHALL HAVE A MINIMUM ULTIMATE COMPRESSIVE STRENGTH OF 4000 lbs. PER SQ. INCH AT THE END OF 28 DAYS, UNLESS OTHERWISE NOTED.
- MANHOLES MAY BE CONSTRUCTED OF PRECAST REINFORCED CONCRETE, OR CAST IN PLACE.
- PRECAST REINFORCED CONE BARREL MANUFACTURED PER ASTM SPEC. C-478.
- ALL STORM AND SEWER MANHOLE COVERS SHALL BE SOLID AND SHALL HAVE ONE 7/8" DIAMETER DRILLED PICK HOLE LOCATED 8" FROM THE CENTER OF THE COVER.
- ALL SANITARY MANHOLE COVERS SHALL HAVE "SEWER" CAST INTO THE COVER. ALL STORMWATER/DRAIN MANHOLE COVERS SHALL HAVE "DRAIN" CAST INTO THE COVER.
- ALL MANHOLE RISERS SHALL BE ETHERIDGE 24" OR APPROVED EQUAL.
- SEWER BRICK SHALL CONFORM TO ASTM SPEC. DESIGNATE ON C-32-63, GRADE MA AND SA.
- ALL SANITARY MANHOLES SHALL HAVE A WATERPROOFING COATING APPLIED TO THE EXTERIOR SURFACE.
- CATCH BASIN FRAMES FOR TYPE A4 CATCH BASIN CURB INLETS SHALL BE ETHERIDGE DRS4 OR APPROVED EQUAL.
- CASTINGS SHALL CONFORM TO ASTM DESIGNATION A48-CLASS 35.
- EXISTING MANHOLES, CATCH BASINS, FRAMES, AND COVERS SHALL BE SALVAGED BY THE CONTRACTOR, AND SHALL REMAIN THE PROPERTY OF THE CITY OF PORTLAND.
- ALL CATCH BASIN OUTLETS SHALL BE INSTALLED WITH A CASCO TRAP. SEE FIGURE II-09.

2 GENERAL NOTES FOR MANHOLES AND CATCH BASINS (II-4)

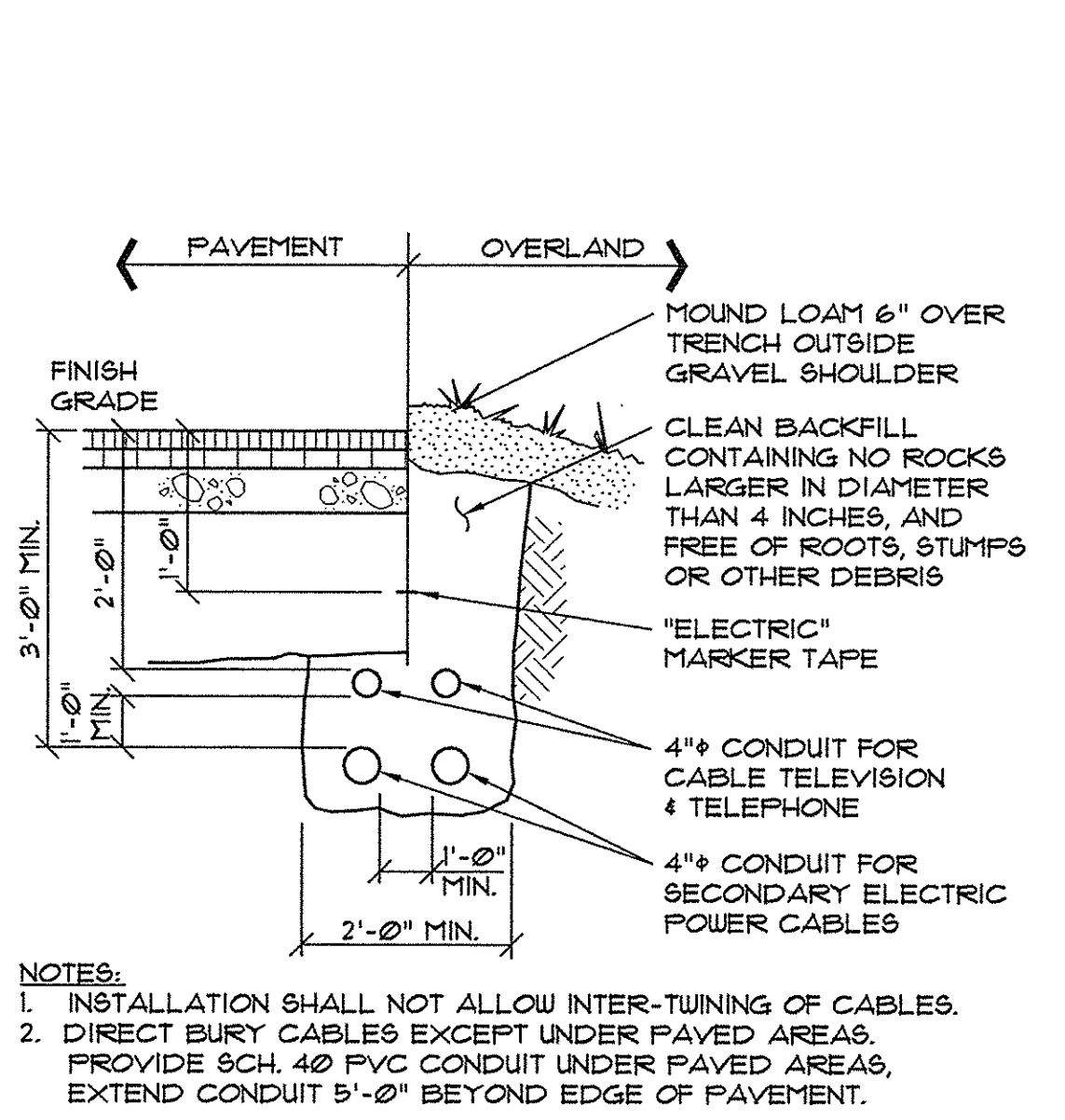
NOTES:
DEPTH OF BITUMINOUS PAVEMENT AND AGGREGATE COURSES SHALL BE DETERMINED BY STREET CLASSIFICATION.
ANY ALTERNATE TRENCHING OR PAVEMENT METHODS SHALL BE APPROVED IN ADVANCE BY THE CITY OF PORTLAND, DEPARTMENT OF PUBLIC SERVICES.



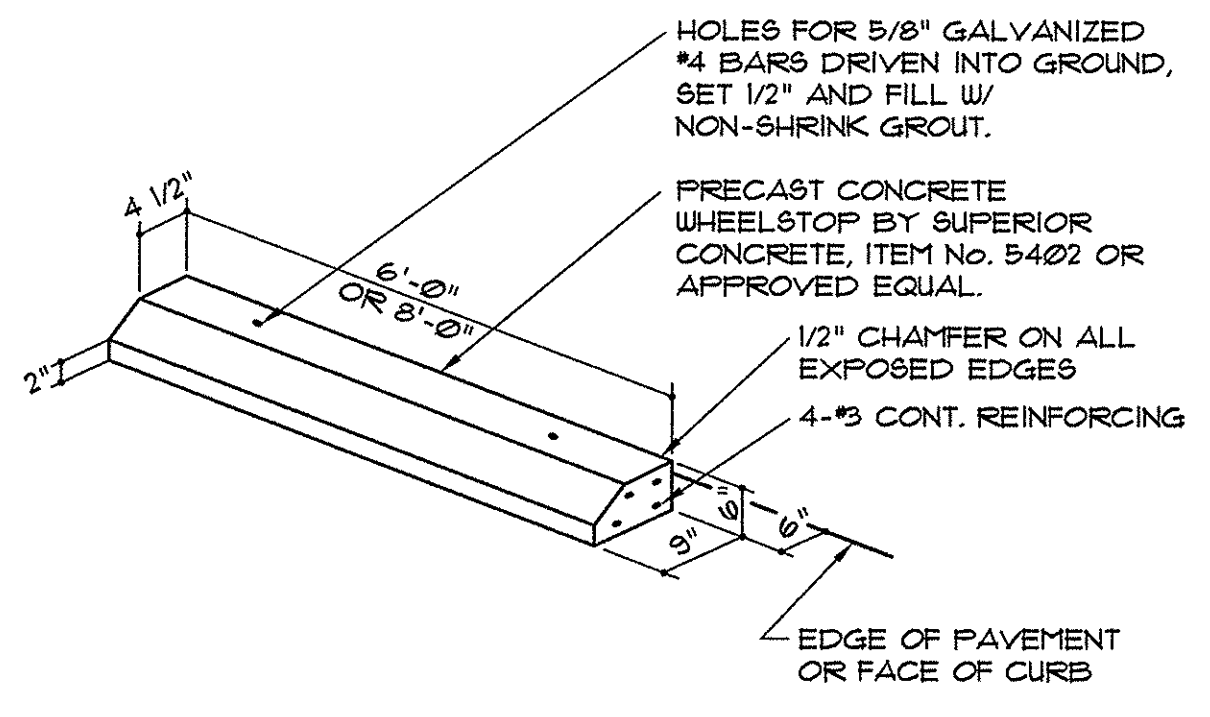
3 TYPICAL PIPE TRENCH INSTALLATION (11-12)



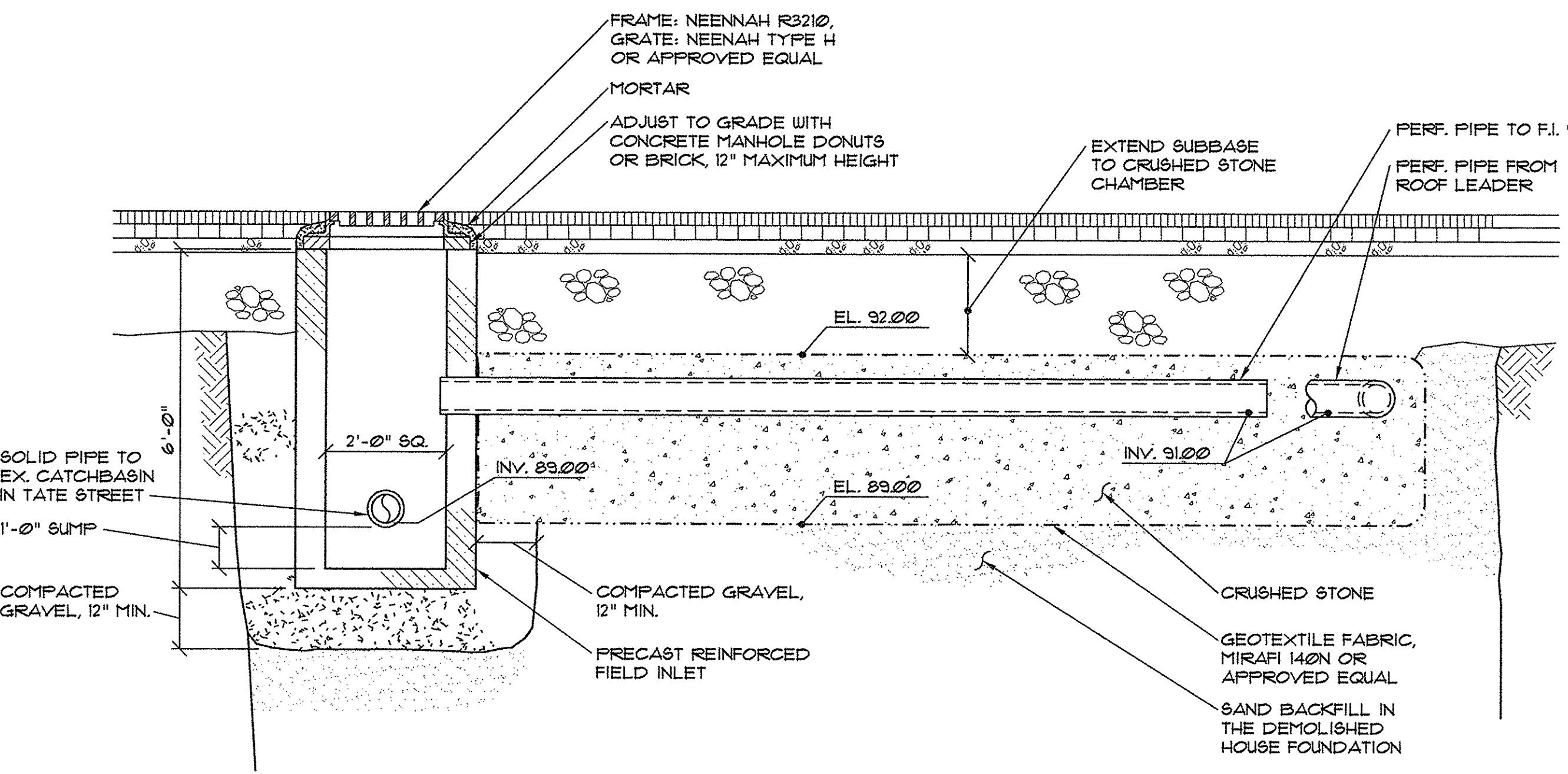
4 TYPICAL WATER MAIN SECTION ON-SITE



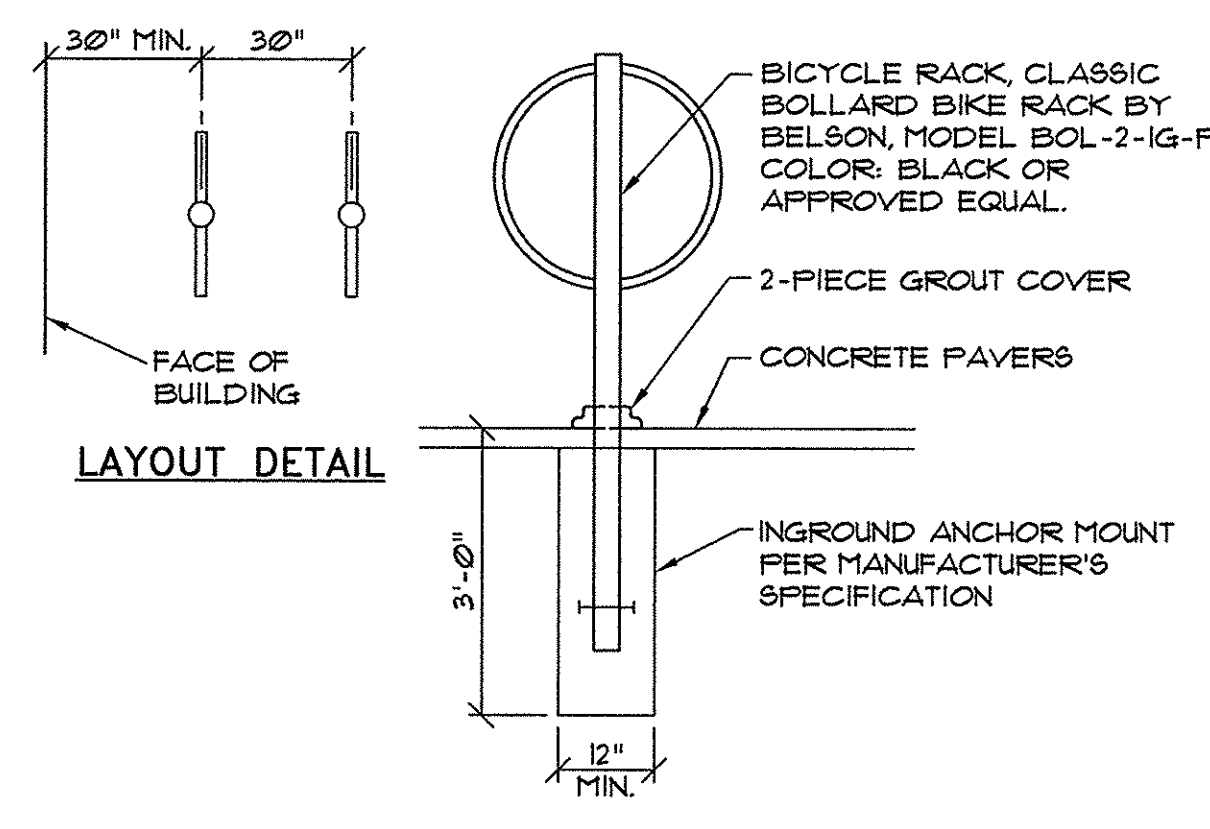
5 CABLE TRENCH SECTION



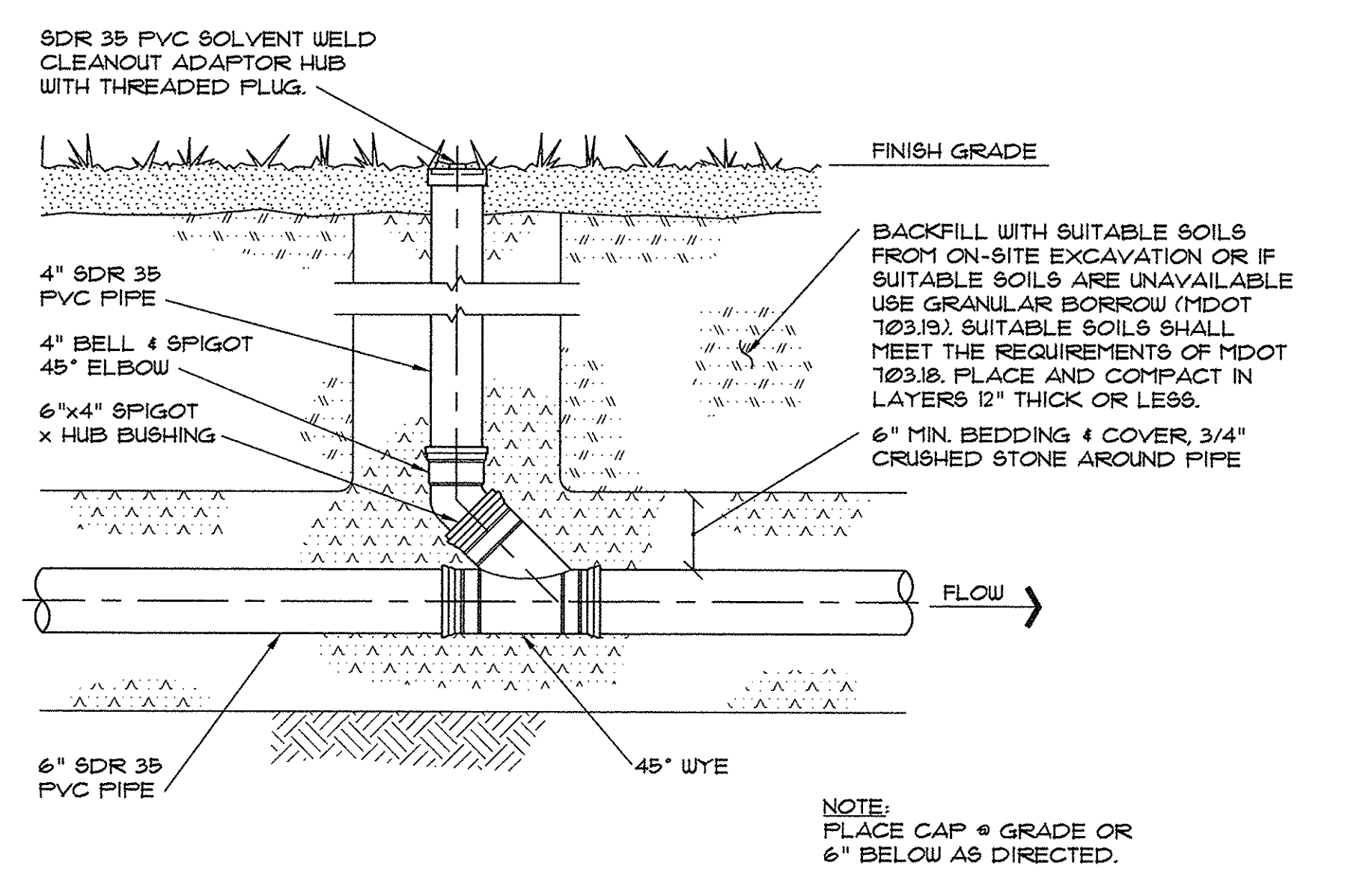
9 CONCRETE WHEELSTOP DETAIL



6 FIELD INLET & CRUSHED STONE CHAMBER SECTION

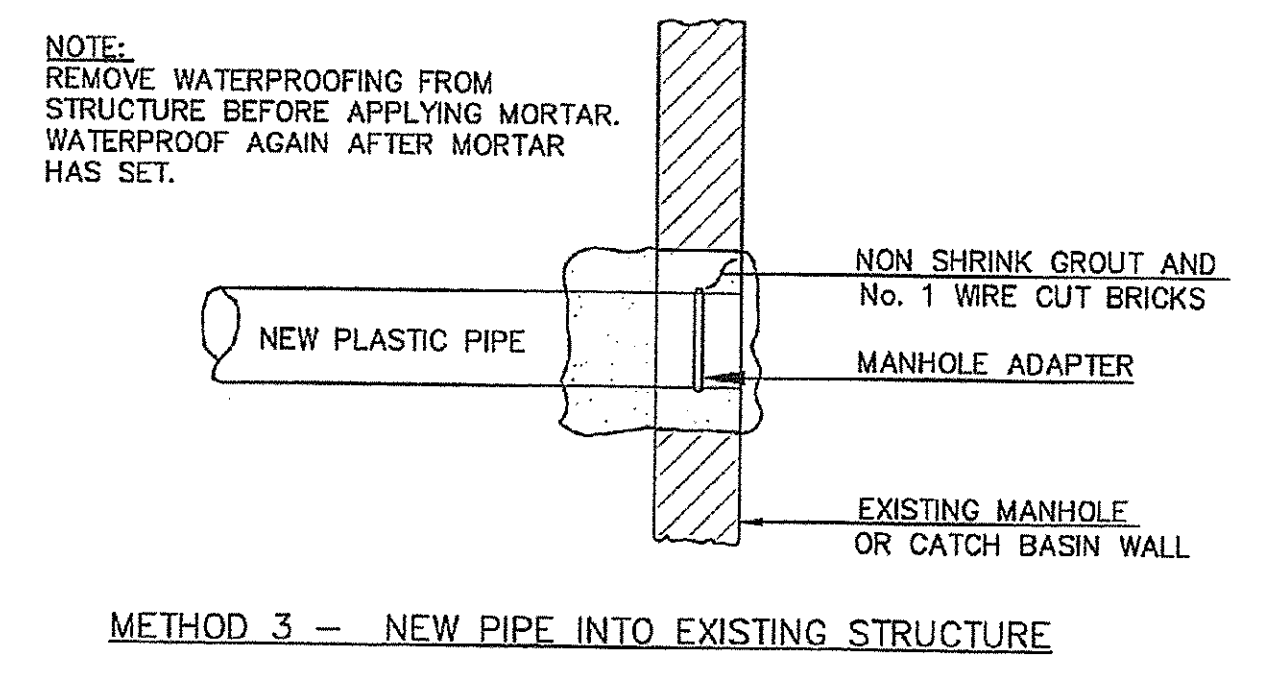


10 BIKE RACK DETAIL



8 TYPICAL CLEANOUT DETAIL

NOTE: EXISTING MANHOLE OR CATCH BASIN SHALL BE CORE DRILLED FOR PIPE INSTALLATION.



7 PIPE CONNECTION METHOD 3 (II-14)