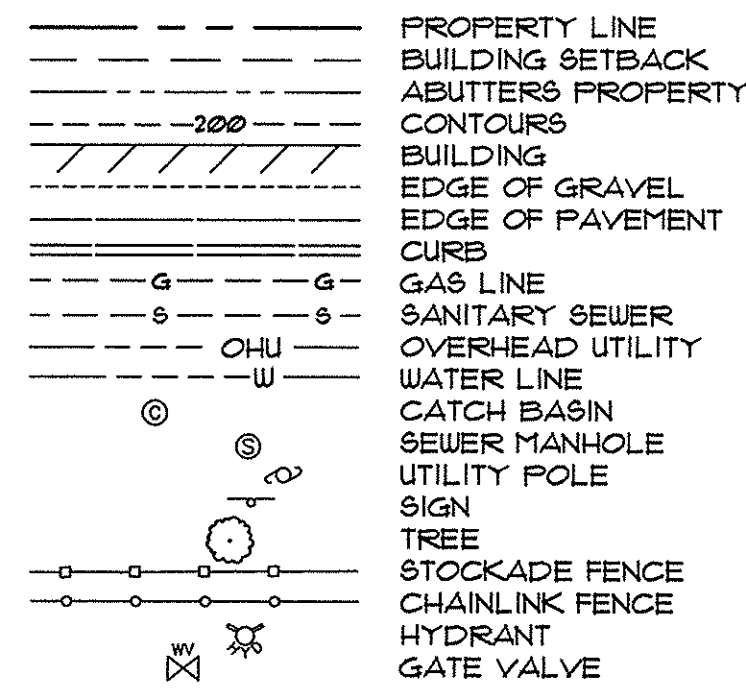
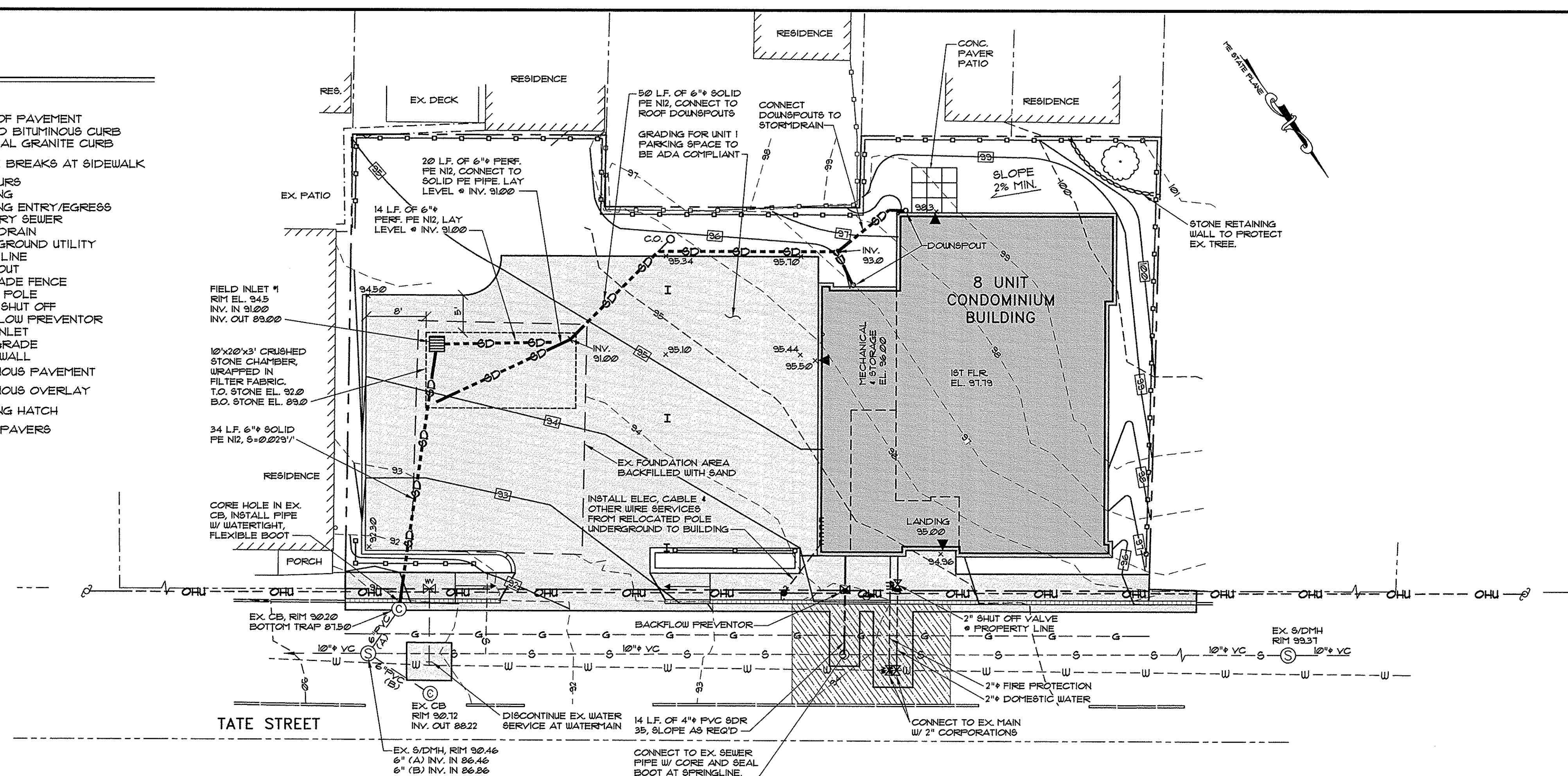
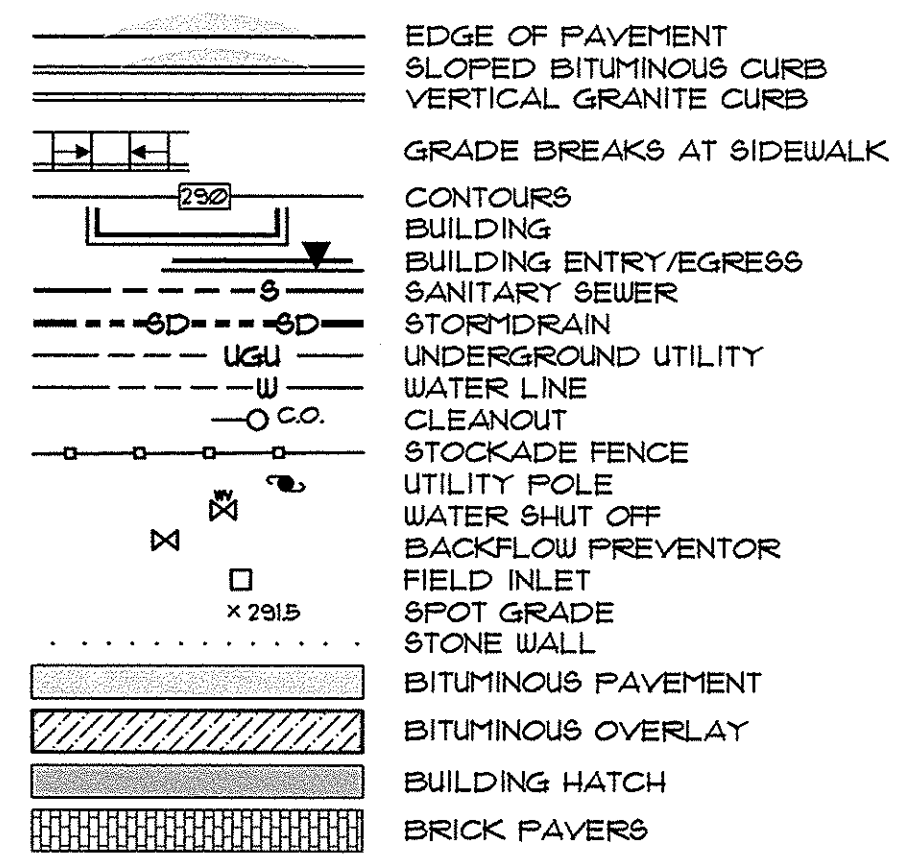


LEGEND

EXISTING

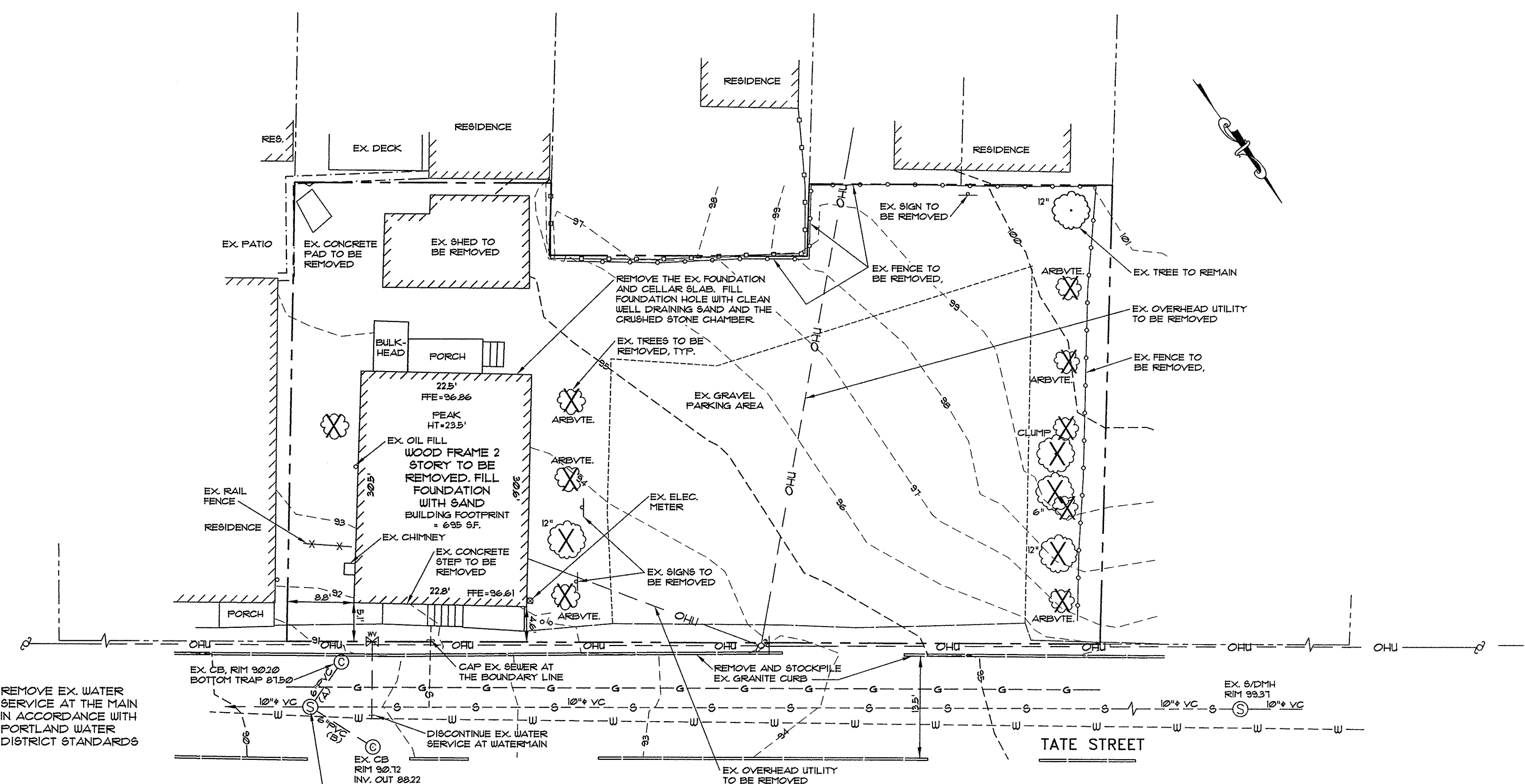


PROPOSED



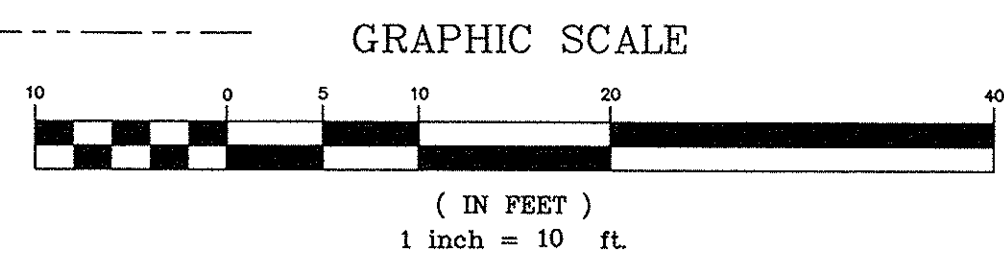
GRADING & UTILITIES PLAN

SCALE: 1"=10'

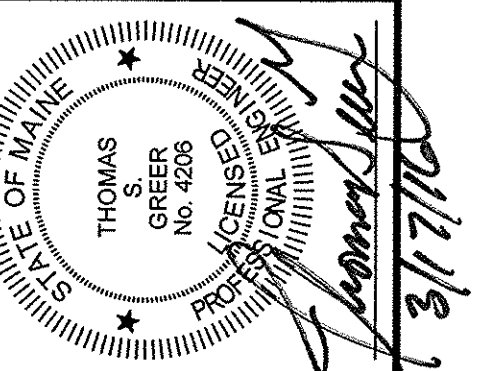


EXISTING CONDITIONS & DEMOLITION PLAN

SCALE: 1"=10'



PINKHAM & GREER
CIVIL ENGINEERS
28 WINDHAM AVE. PORTLAND, ME 04103
TEL: 207.761.5442 FAX: 207.761.4265



| REV. | DATE | DESCRIPTION |
|------|---------|---|
| 1 | 11/9/15 | REV'D PER STAFF COMMENTS |
| 2 | 11/9/15 | REV'D PER STAFF REVIEW |
| 3 | 2/1/16 | FINAL STAFF REVIEW, ADDED PATIO, CORRECT ADDRESS |
| 4 | 3/2/16 | COORDINATED FINAL BUILDING FOOTPRINT W/ ARCHITECT |
| 5 | 3/16/16 | REV'D BUILDING SETBACKS PER PLANNING REVIEW |

DEVELOPER: TATE STREET PARTNERSHIP, LLC
3 CANAL PLAZA #501, PORTLAND
SCALE: AS SHOWN
DATE: OCTOBER 9, 2015
PROJECT: 15133

WEST PORT LOFTS CONDOMINIUM
22-28 TATE STREET
PORTLAND, MAINE
EXISTING CONDITION
& DEMOLITION PLAN,
GRADING & UTILITIES PLAN

C1.3