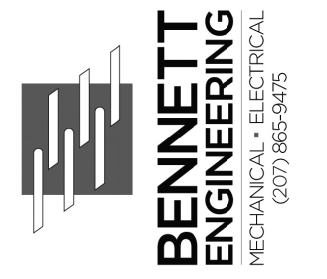


Developer
 Tate Street Partnership, LLC
 17 Chestnut Street
 Portland Maine, 04101

Eastern Mechanical Inc
 MEP: Design/Build

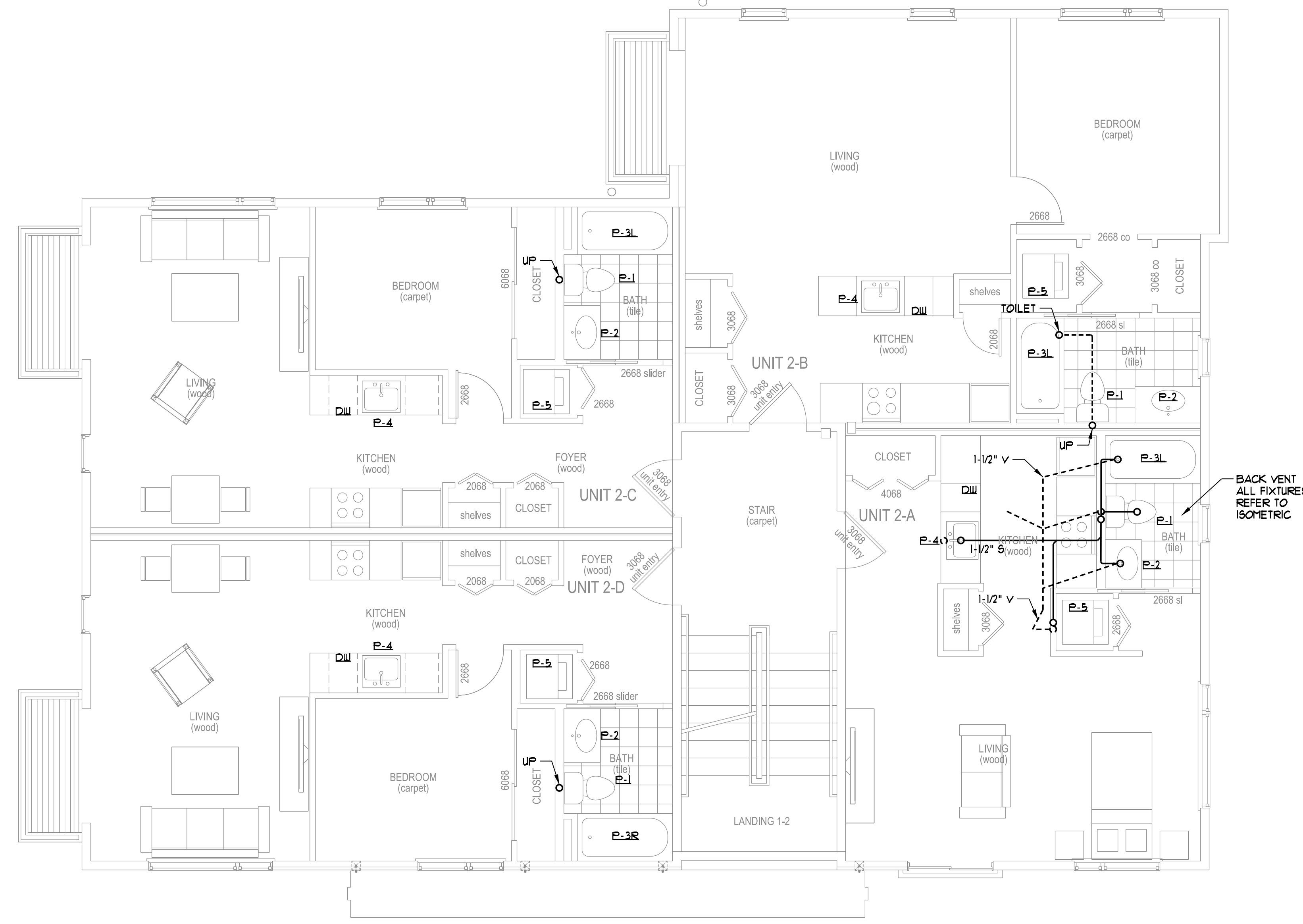


Project:
 West Port Lofts Condominiums
 & Unit Apartment Building
 22-28 Tate Street, Portland Maine, 04101
 Tax Map 44, Block E, Lots 15, 17, & 19

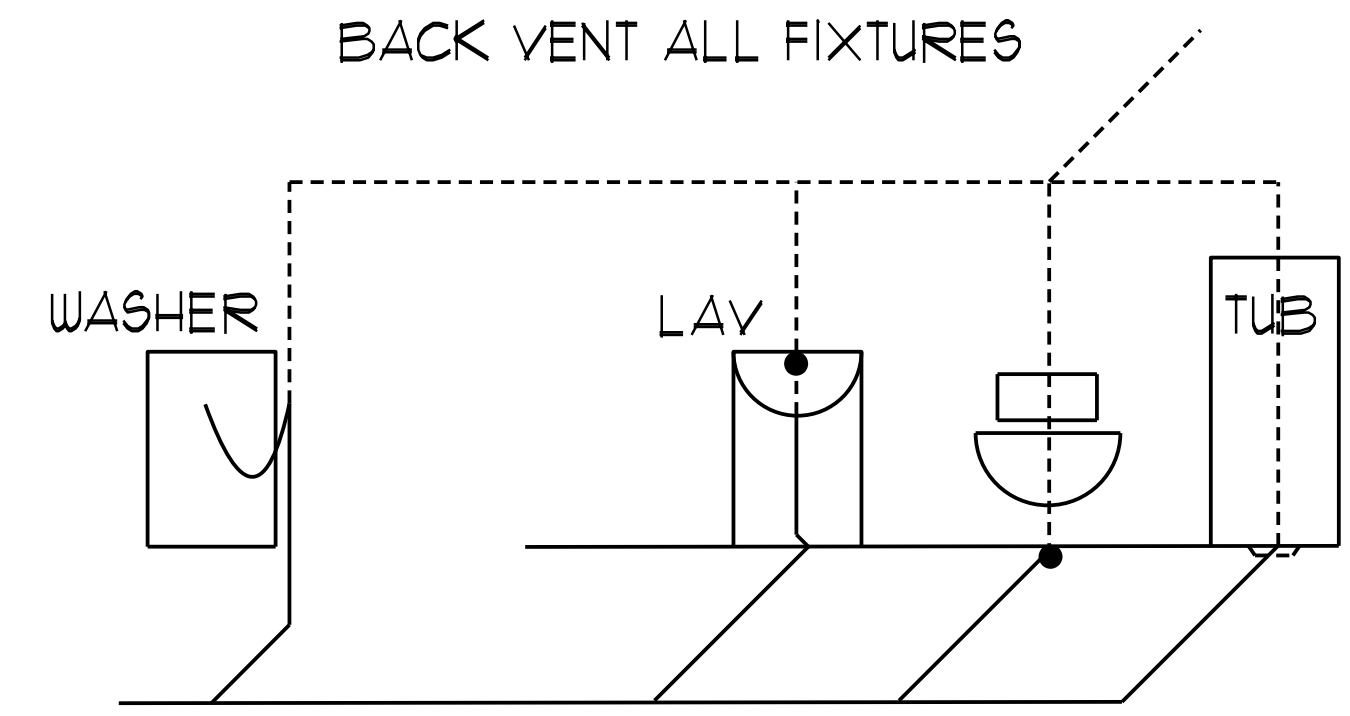
Issued for Permit Only
 Not for Construction

Date:
 May 24, 2016
 Second Floor Plumbing
 Drain & Vent Plan

P1.05



BACK VENT
 ALL FIXTURES.
 REFER TO
 ISOMETRIC



BACK VENT ALL FIXTURES

SECOND FLOOR PLAN

SCALE 1/4" = 1'-0"

GENERAL NOTE

1. REFER TO THIRD FLOOR PLAN P1.06 FOR FURTHER PLUMBING VENTILATION INFO.

PLUMBING ISOMETRIC

N.T.S