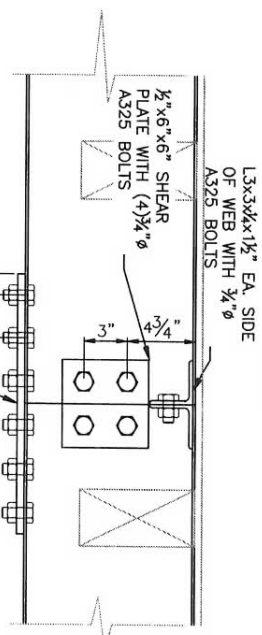
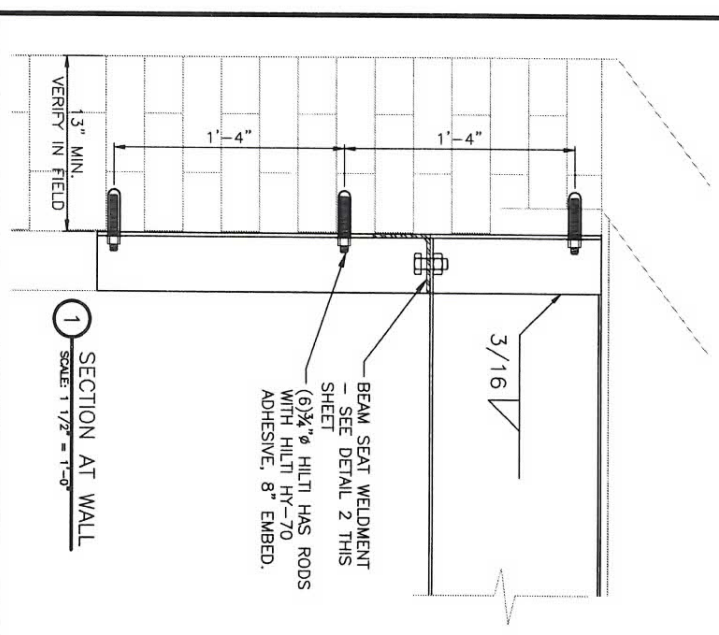


BUILDING SECTION
SCALE: 1/4" = 1'-0"

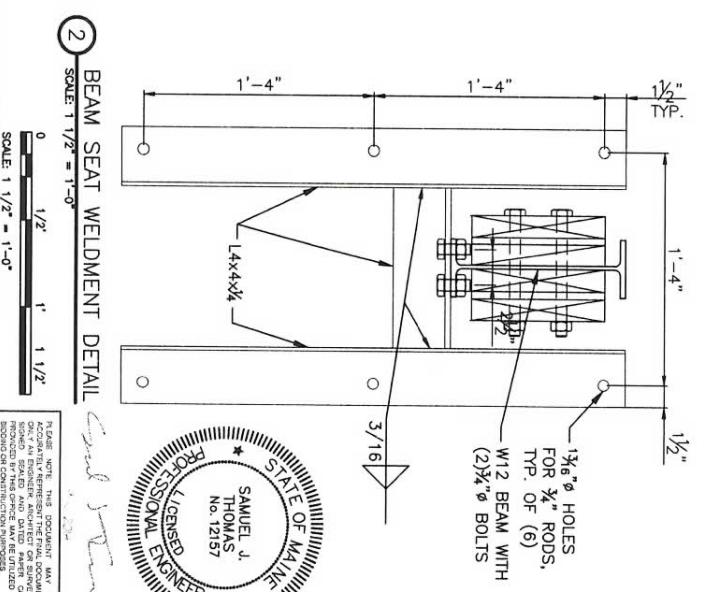
- NOTES:
1. STEEL PLATE AND ANGLES SHALL BE ASTM A36
 2. W BEAMS SHALL BE ASTM A992
 3. ALL STEEL SHALL BE SHOP PRIMED EXCEPT AT SLIP CRITICAL BOLTS
 4. ALL BOLTS SHALL BE ASTM A325 UNLESS NOTED OTHERWISE.
 5. ALL WELDING SHALL UTILIZE E70XX ELECTRODES
 6. FIELD VERIFY ALL DIMENSIONS PRIOR TO FABRICATION



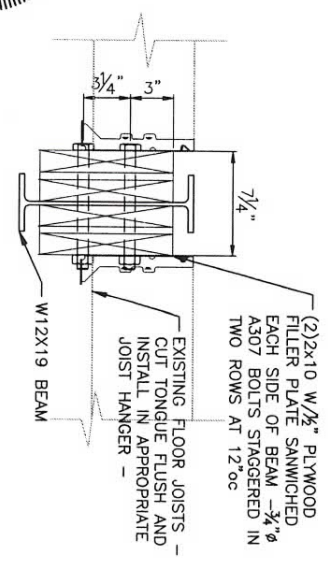
SECTION AT SPLICE
SCALE: 1/2" = 1'-0"



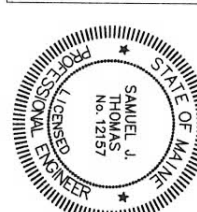
SECTION AT WALL
SCALE: 1/2" = 1'-0"



BEAM SEAT WELDMENT DETAIL
SCALE: 1/2" = 1'-0"



EXIST. JOIST TO STEEL BEAM DETAIL
SCALE: 1/2" = 1'-0"



PLEASE NOTE: THIS DOCUMENT MAY NOT BE REPRODUCED OR TRANSMITTED IN ANY FORM OR BY ANY MEANS, ELECTRONIC OR MECHANICAL, INCLUDING PHOTOCOPYING, RECORDING, OR BY ANY INFORMATION STORAGE AND RETRIEVAL SYSTEM, WITHOUT THE WRITTEN PERMISSION OF THE ENGINEER. THE ENGINEER'S LIABILITY IS LIMITED TO THE PROFESSIONAL SERVICES PROVIDED HEREON.

REV	DESCRIPTION	DATE	BY	CHECKED	DATE	BY	CHECKED
0	ISSUED FOR CONSTRUCTION						
1	ISSUED FOR FIELD CONDITIONS						
2	ISSUED FOR REVIEW						

PROJECT NO.	228 001 001
SHEET	1 OF 1
DRAWING NO.	SSK-1
PROJECT NAME	3rd FLOOR BEAM REINFORCING
CLIENT	ANTHONY FILIPPONE
ADDRESS	228 YORK ST
CITY	BALTIMORE, MD
STATE	MD
COUNTRY	USA

STAMPED DRAWING