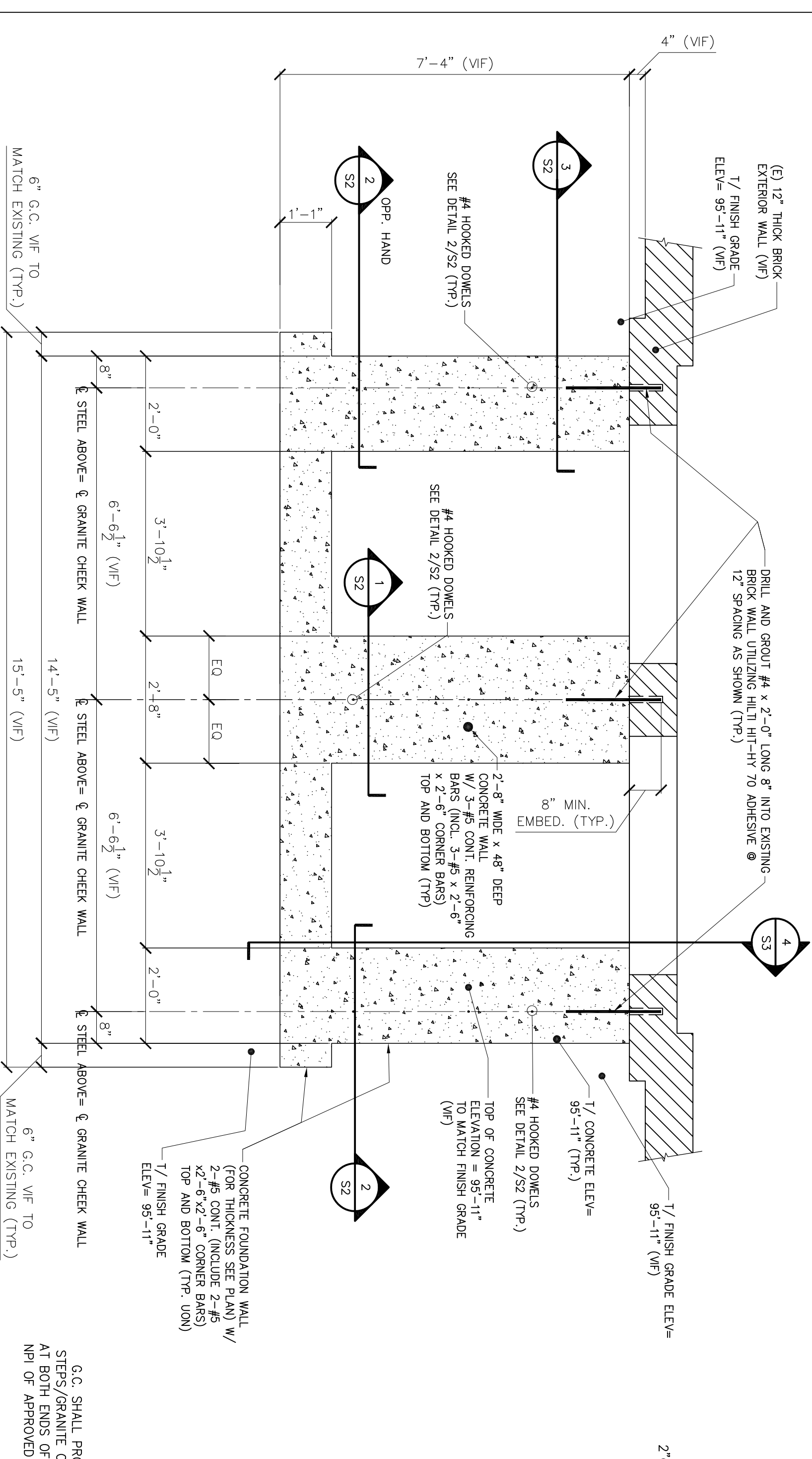


FRONT ENTRY PLAN

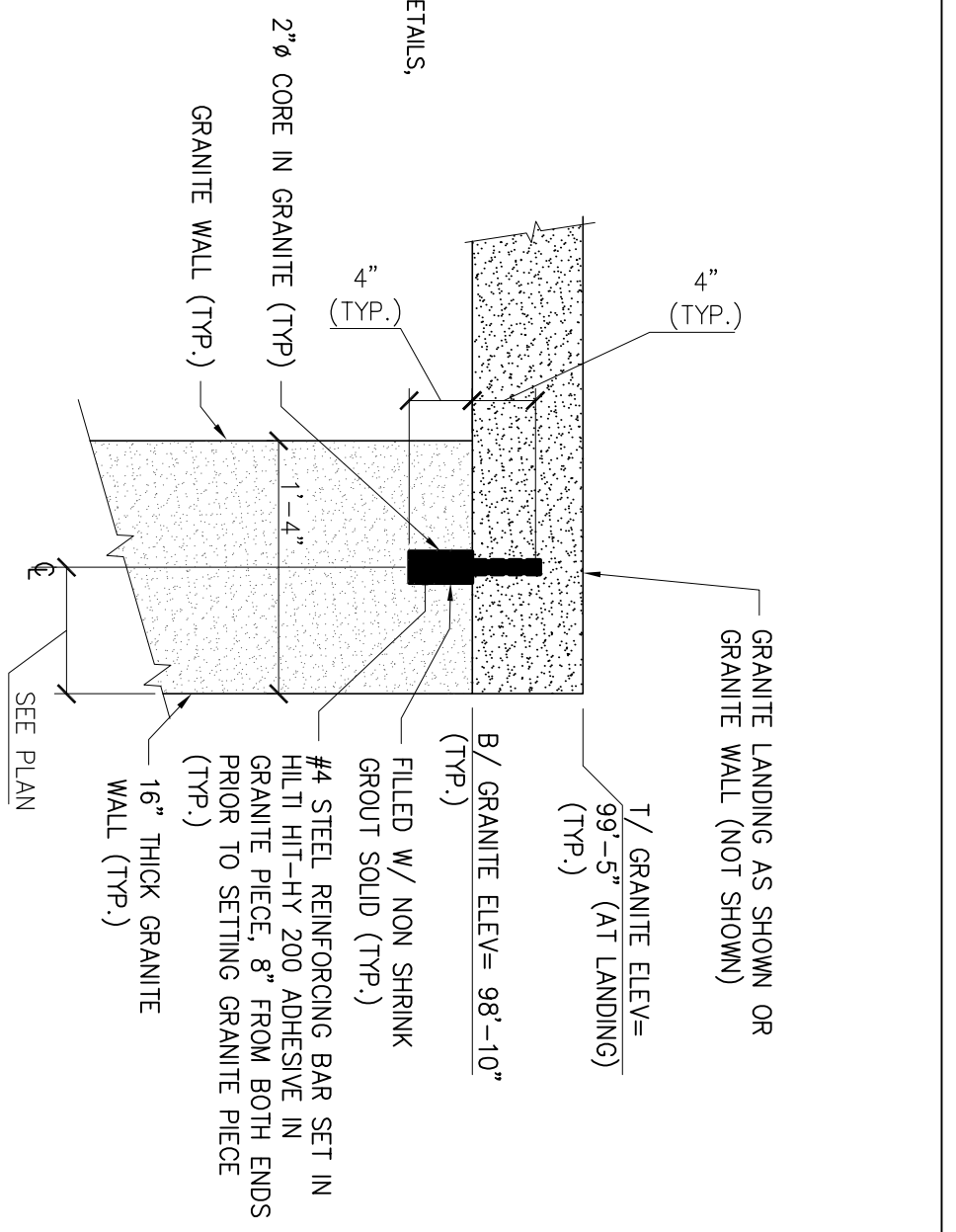
- NOTES:
1. SEE GENERAL NOTES ON DWG. S1.
 2. "E" INDICATES EXISTING CONDITIONS, OR MEMBERS.
 3. "TYP." INDICATES TYPICAL (ALSO SEE GENERAL NOTE #3).
 4. "V.F." INDICATES VERTICAL FINISH GRADE.
 5. "U.O.N." INDICATES UNLESS OTHERWISE NOTED.
 6. "M.O." INDICATES MASONRY OPENING.
 7. "H.O.G." INDICATES HOT DIP GALVANIZED.

NOTE:
 • ALL DIMENSIONS AND ELEVATIONS SHALL BE CONFIRMED TO MATCH EXISTING DIMENSIONS IN THE FIELD (V.F.)
 • FOR FOUNDATION AND FIRST CONSTRUCTION AND CONNECTION TO GRANITE - SEE ARCH. DWG.



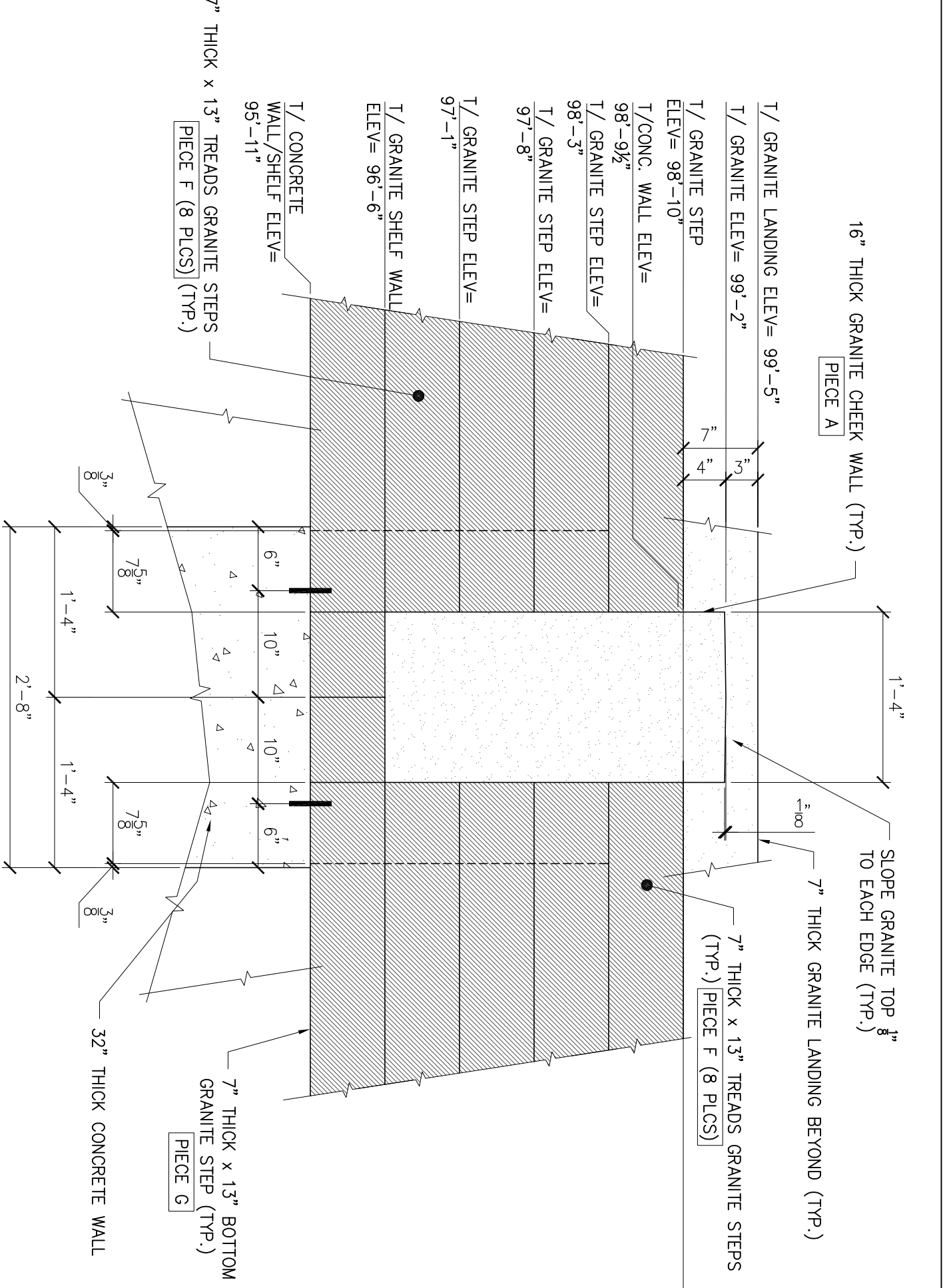
FRONT ENTRY FOUNDATION PLAN

- NOTES:
1. SEE GENERAL NOTES ON DWG. S1.
 2. "E" INDICATES EXISTING CONDITIONS, OR MEMBERS.
 3. "TYP." INDICATES TYPICAL (ALSO SEE GENERAL NOTE #3).
 4. "V.F." INDICATES VERTICAL FINISH GRADE.
 5. "U.O.N." INDICATES UNLESS OTHERWISE NOTED.
 6. "M.O." INDICATES MASONRY OPENING.
 7. "H.O.G." INDICATES HOT DIP GALVANIZED.

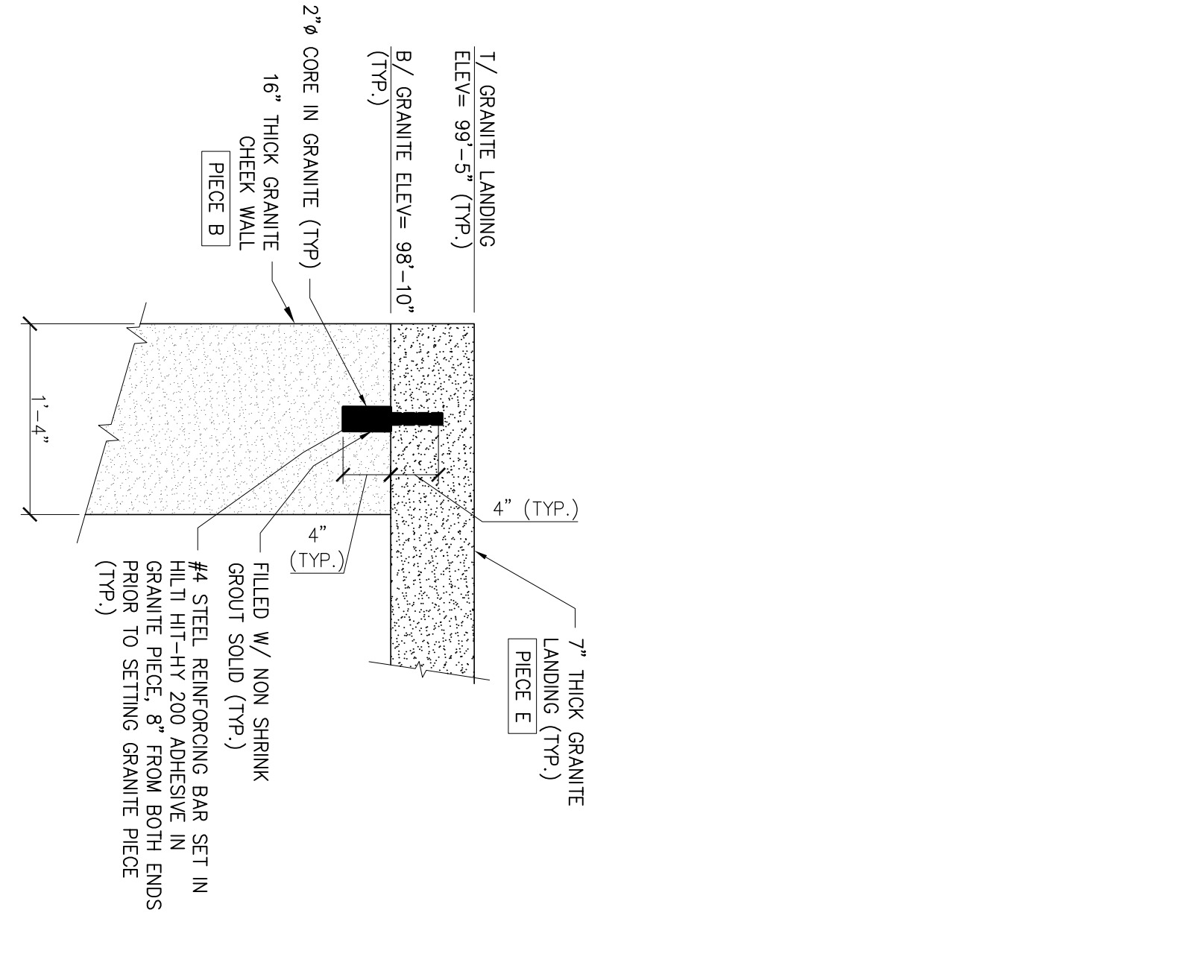


CONNECTION DETAIL A-A

NOTE:
 • ALL DIMENSIONS AND ELEVATIONS SHALL BE CONFIRMED TO MATCH EXISTING DIMENSIONS IN THE FIELD (V.F.)
 • FOR FOUNDATION AND FIRST CONSTRUCTION AND CONNECTION TO GRANITE - SEE ARCH. DWG.

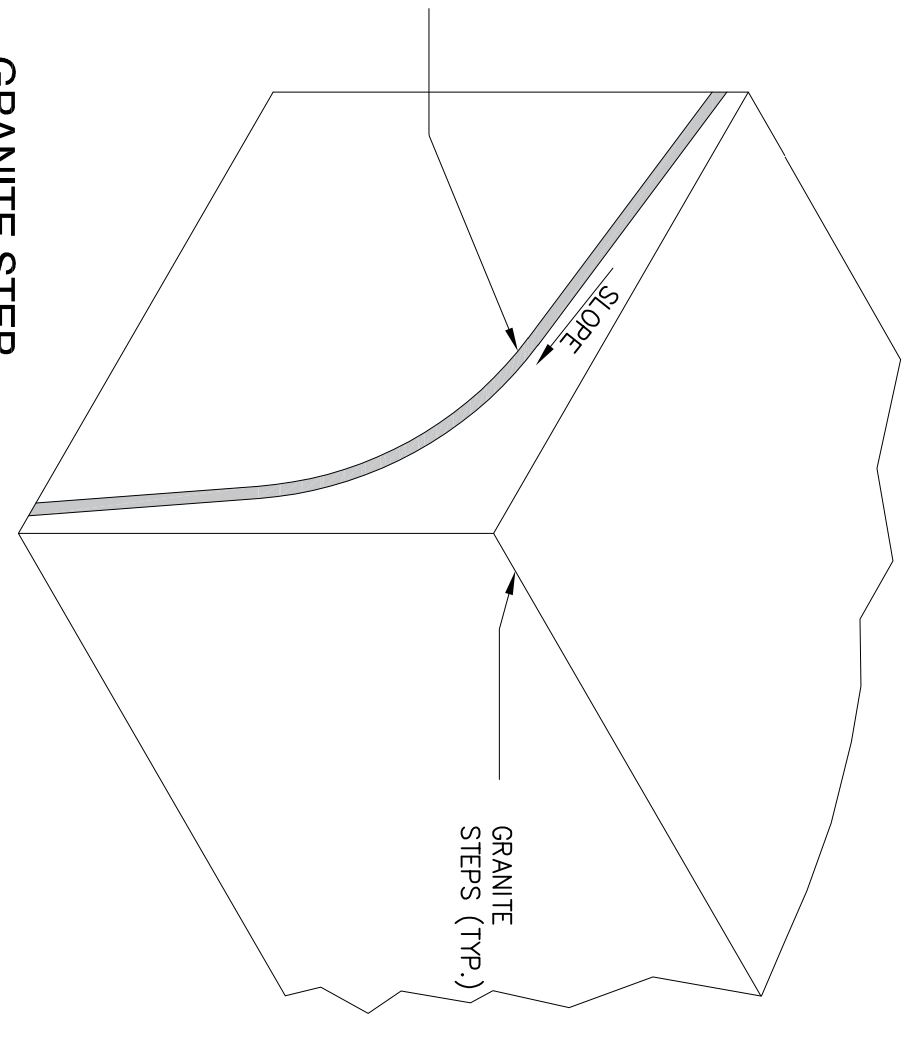


SECTION 1

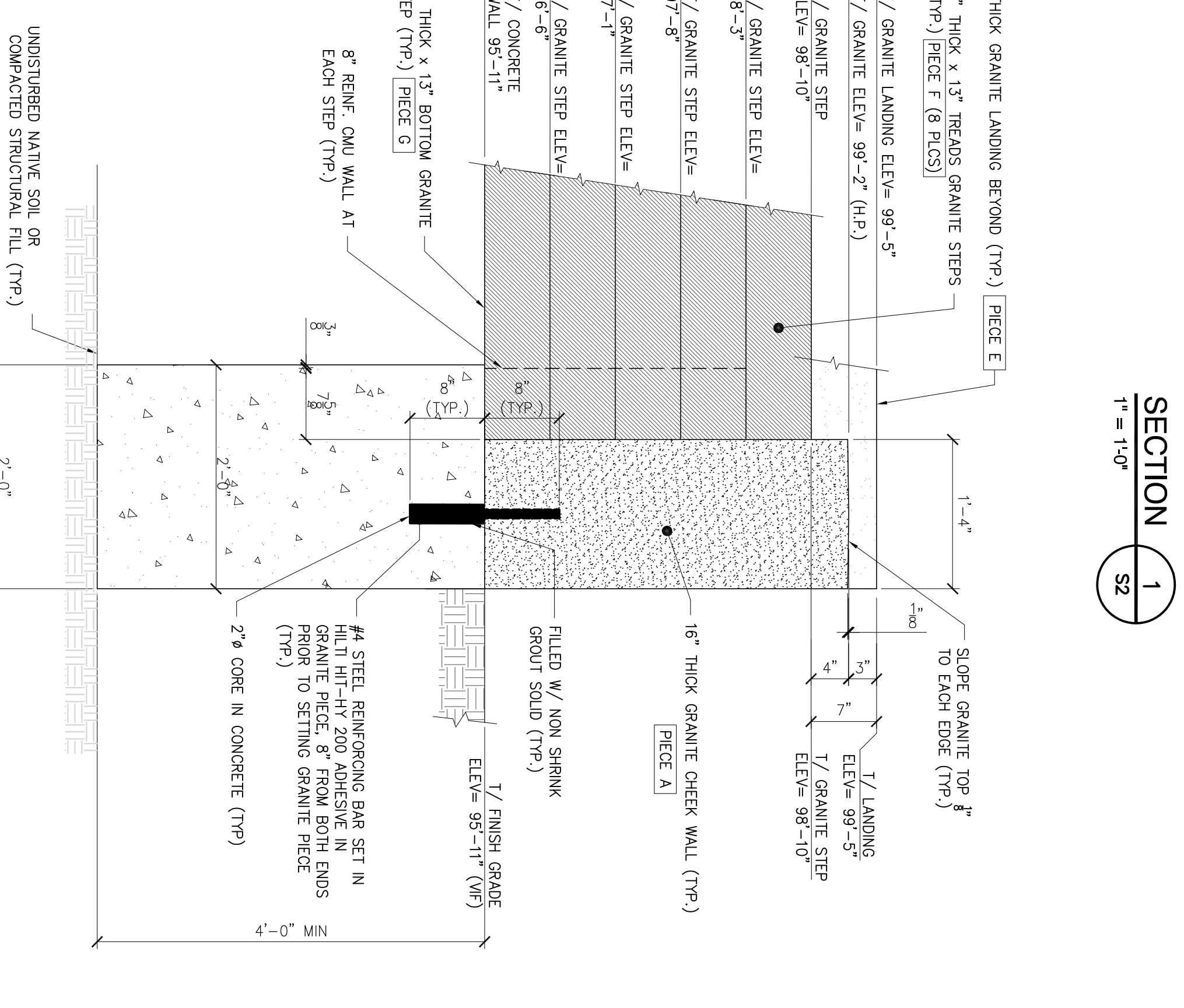


SECTION 3

G.C. SHALL PROVIDE SLOPED SEALANT AT STEPS/GRANITE CHEEK WALL INTERSECTIONS AT BOTH ENDS OF STEPS. FILL W/ CAULKING MFI OF APPROVED SIKA URETHANE CAULKING SLOPE TO DRAIN (TYP.)



GRANITE STEP

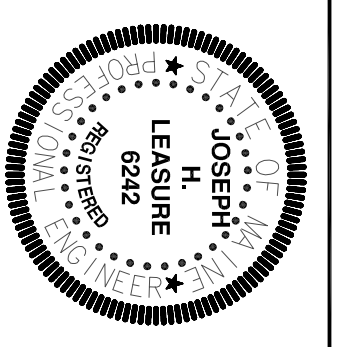


SECTION 2

THESE DRAWINGS HAVE BEEN DEVELOPED BY L&L STRUCTURAL ENGINEERING SERVICES, INC. FOR THE PROJECT IDENTIFIED HEREIN. THE CLIENT'S RESPONSIBILITY IS TO OBTAIN ALL NECESSARY PERMITS AND TO VERIFY THAT THE DESIGN AND CONSTRUCTION SHALL BE IN ACCORDANCE WITH ALL APPLICABLE CODES AND REGULATIONS. L&L STRUCTURAL ENGINEERING SERVICES, INC. IS NOT RESPONSIBLE FOR ANY ERRORS OR OMISSIONS THAT MAY OCCUR IN THE USE OF THESE DRAWINGS.

BUILDING LOCATED AT
 126/128 DANFORTH STREET
 PORTLAND, MAINE
FRONT ENTRY REPAIR
 FOUNDATION PLAN, SECTIONS AND DETAILS

designed by:	rev.	date	description	app'd
JHL	1	9-29-17	REVISIONS	
drawn by:				
JH				
checked by:				
JHL				
scale:			AS NOTED	
date:		11/30/2016		
plot date:		02/28/2017		
project #:		27113B		



L & L STRUCTURAL ENGINEERING SERVICES, INC.
 SIX Q STREET
 SOUTH PORTLAND, MAINE 04106
 PHONE: (207) 767-4830
 FAX: (207) 799-5432

