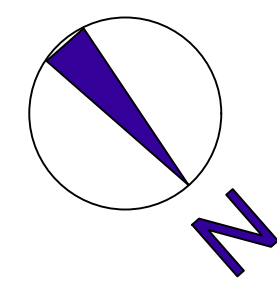
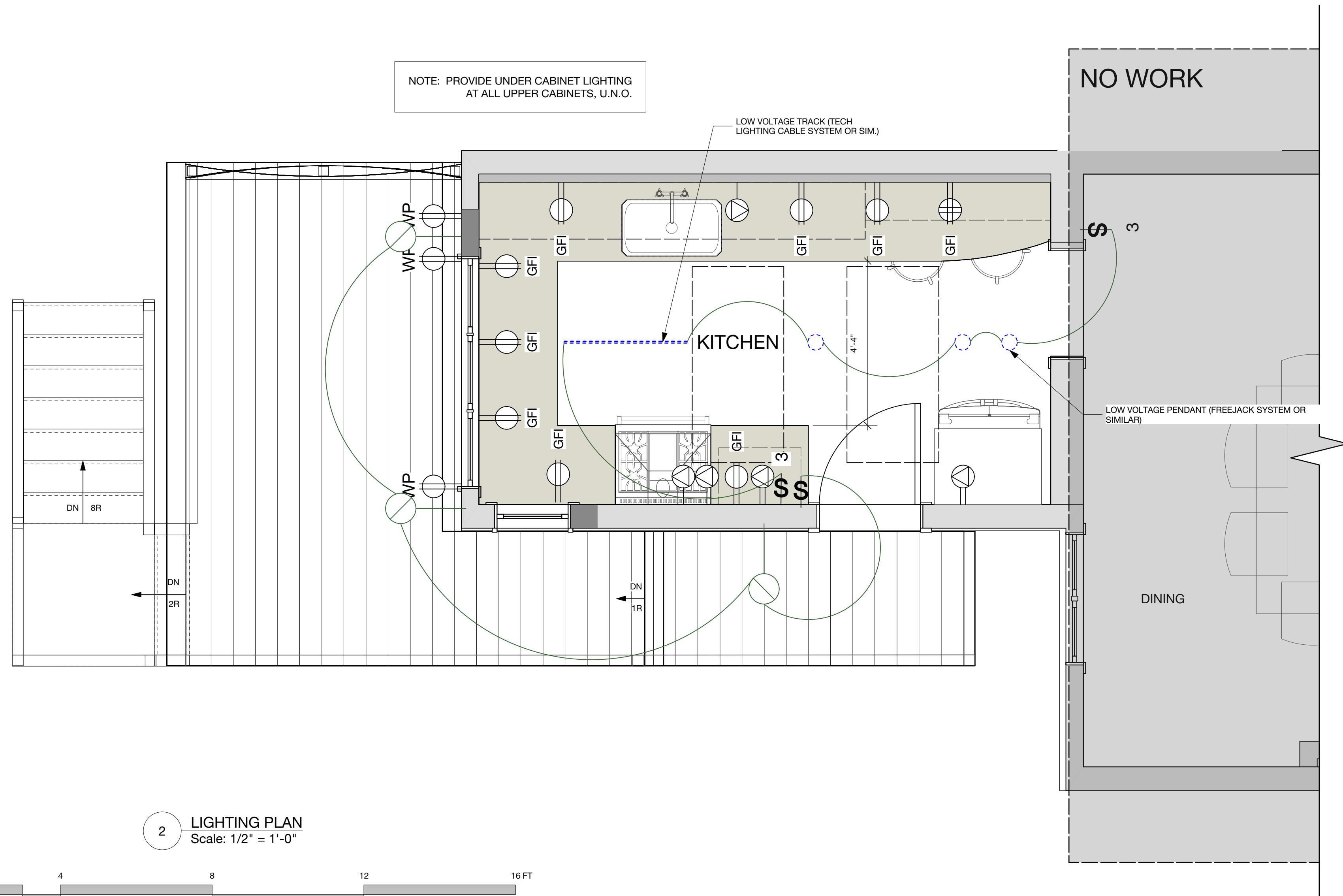
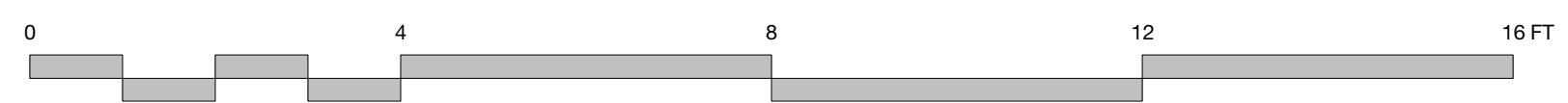


| ELECTRICAL LEGEND | | | |
|-------------------|------------------------|-----|---------------------|
| Ⓢ ₄ | 4-POLE SWITCH | ⊙ | LOW VOLTAGE PENDANT |
| Ⓢ ₃ | 3-POLE SWITCH | --- | LOW VOLTAGE TRACK |
| Ⓢ DIM | SWITCH W/ DIMMER | ○ | WALL-MOUNTED LIGHT |
| Ⓢ | 1-POLE SWITCH | ○ | CEILING LIGHT |
| Ⓢ | SPECIAL PURPOSE OUTLET | ○ | RECESSED LIGHT |
| Ⓢ | DUPLEX OUTLET | ○ | PENDANT LIGHT |
| Ⓢ | QUAD OUTLET | | |
| Ⓢ GFI | GFI OUTLET | | |
| Ⓢ WP | WEATHER-PROOF OUTLET | | |

- ELECTRICAL NOTES**
- Electrical contractor shall provide as part of this contract legible labeling of all breakers on panel board with typewritten or plastic embossed label.
 - The electrical installation shall meet the standards prescribed by the National Electrical Code and all local amendments, all applicable National Fire Protection Association (NFPA) codes, and local and state building codes. Construction shall in general be in accordance with standards and requirements of utilities and authorities having jurisdiction.
 - Verify electrical requirements if any for any equipment or appliances shown on plans prior to commencement of work. Provide isolated ground wires as required by equipment manufacturers.
 - Center all receptacles 18" a.f.f. and switches 42" a.f.f. unless noted otherwise on plan or located above countertops.
 - The scope of the electrical work includes furnishing and installing all electrical work for a complete installation.
 - Lighting in Upper Cabinets not shown for clarity - coordinate with Kitchen drawings & switch locations on lighting plans.



2 LIGHTING PLAN
Scale: 1/2" = 1'-0"



PERMIT SET

| | | | | |
|---------------------------------------------------------------------------------------|---------------------------------------------------------------------------------------|------------------------------------------------------------------------------------------------------------------------------------------------------------------------|--------------------------------------------------------------------------------|-----------------------------------|
|  |  | Design Firm RESIDENTIAL DESIGN STUDIO, LLC Carol A. Morrissette 21 Cheatez Street, Suite 506 Portland, Maine 04101 T 207.699.4184 C 207.671.7965 | Project Title DUNDON/CRAWFORD 5 STRATTON PLACE PORTLAND, MAINE | Sheet Status PERMIT SET |
| | | Revisions 1 2 3 | Sheet Title LIGHTING PLAN | Project Number 16.30 |
| | | | Drawn By CAM/AC | Sheet No. E2.1 |
| | | | Sheet Scale 1/2" = 1'-0" | |
| | | | CAD File Number DundonA1 | |