

44B-23

41 State St.

Zoning Amend.

Maine workforce

housing

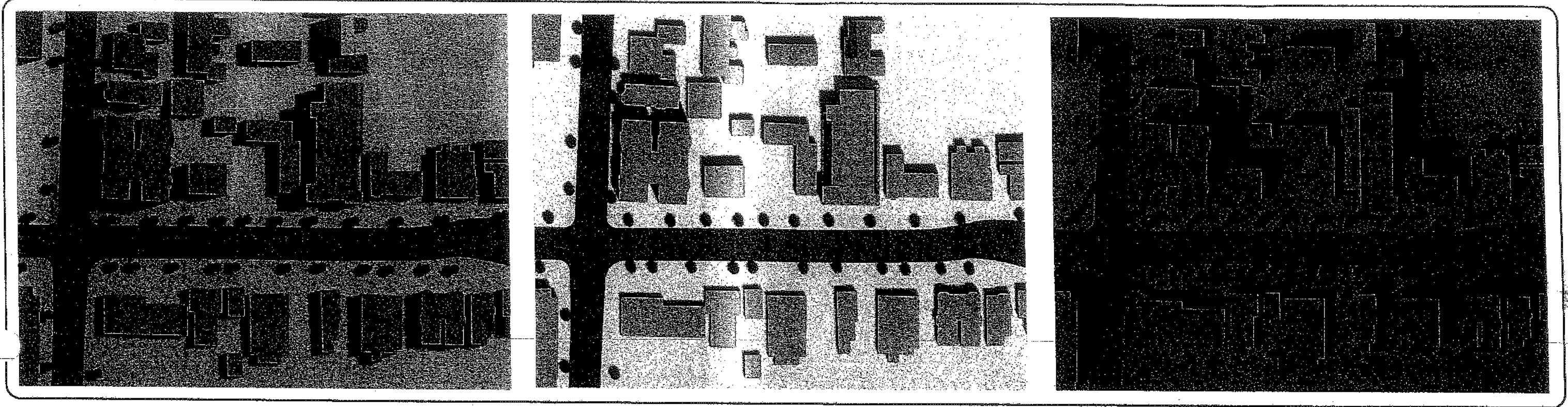
Harborside Apartments

41 State Street, Portland, ME

AH
14

Summer Solstice (21st June)

Proposed

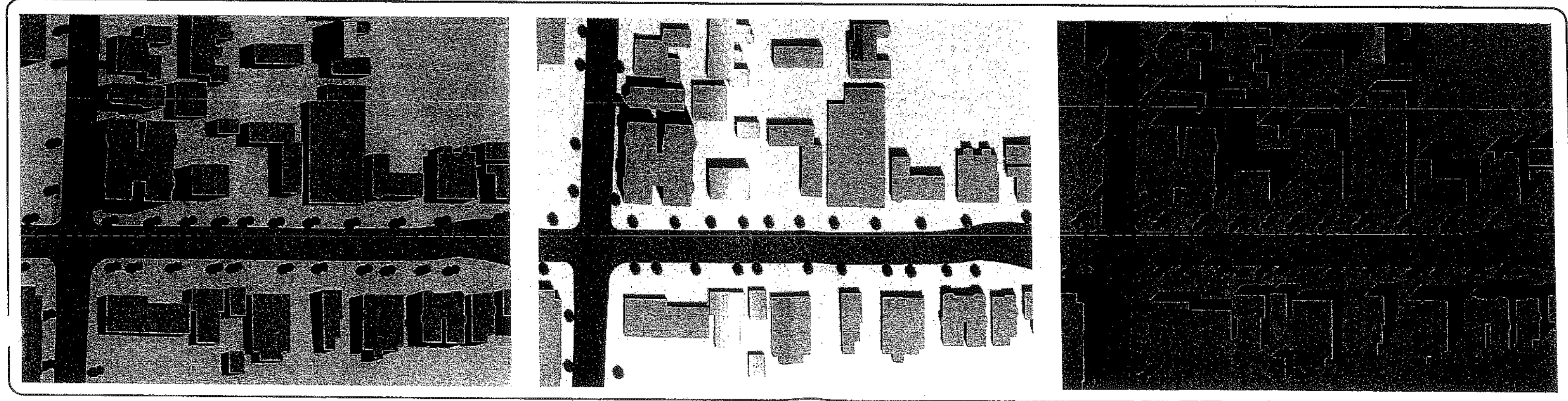


Existing

9 am

Noon

3 pm

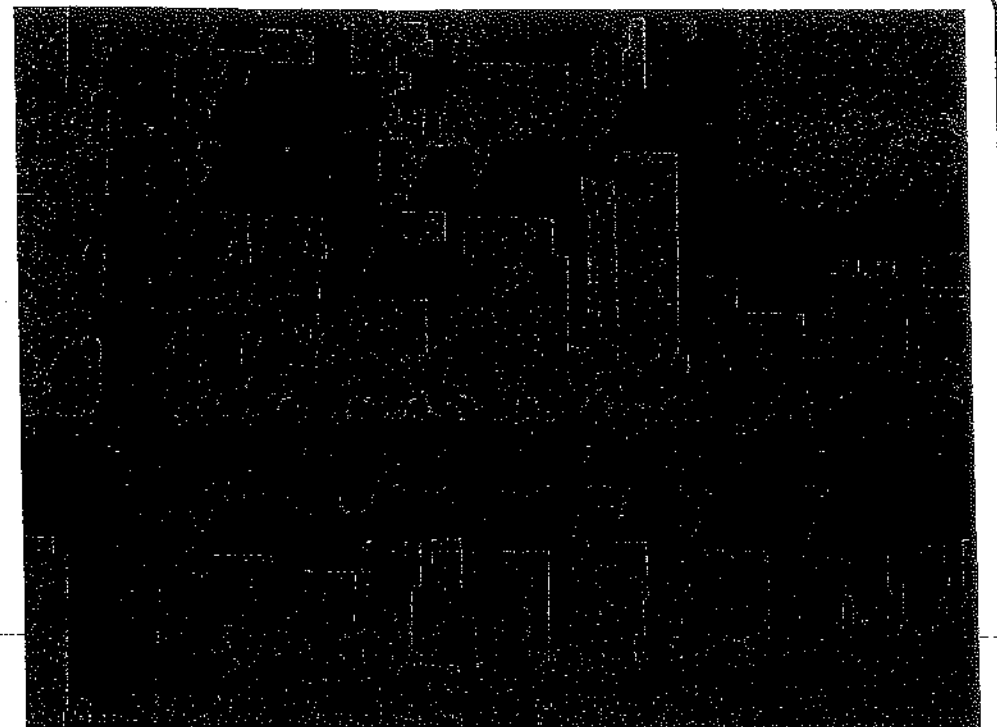
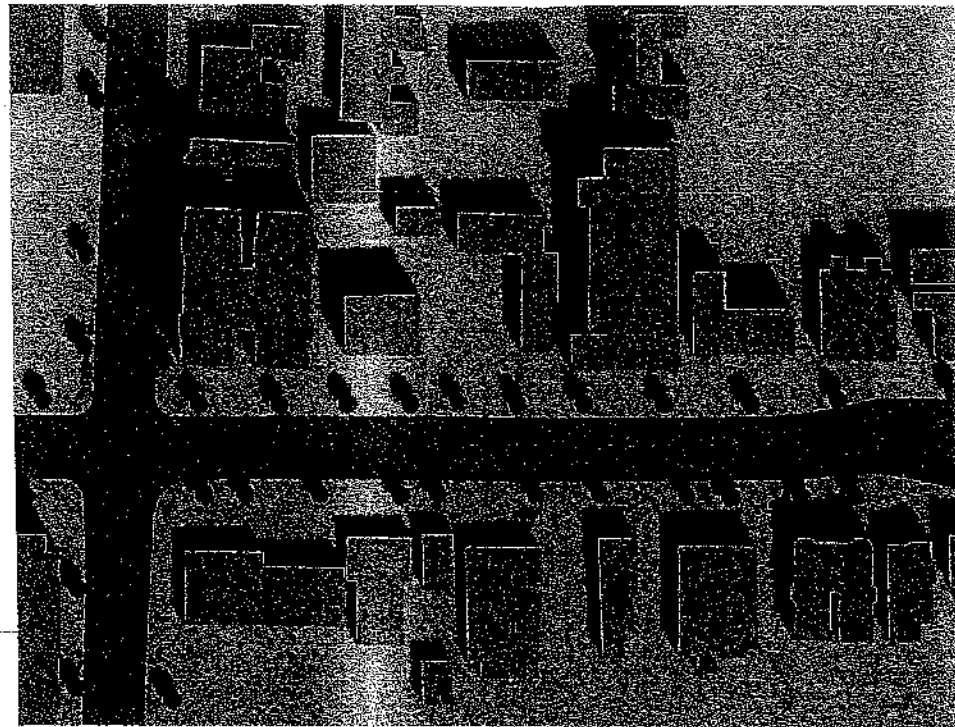
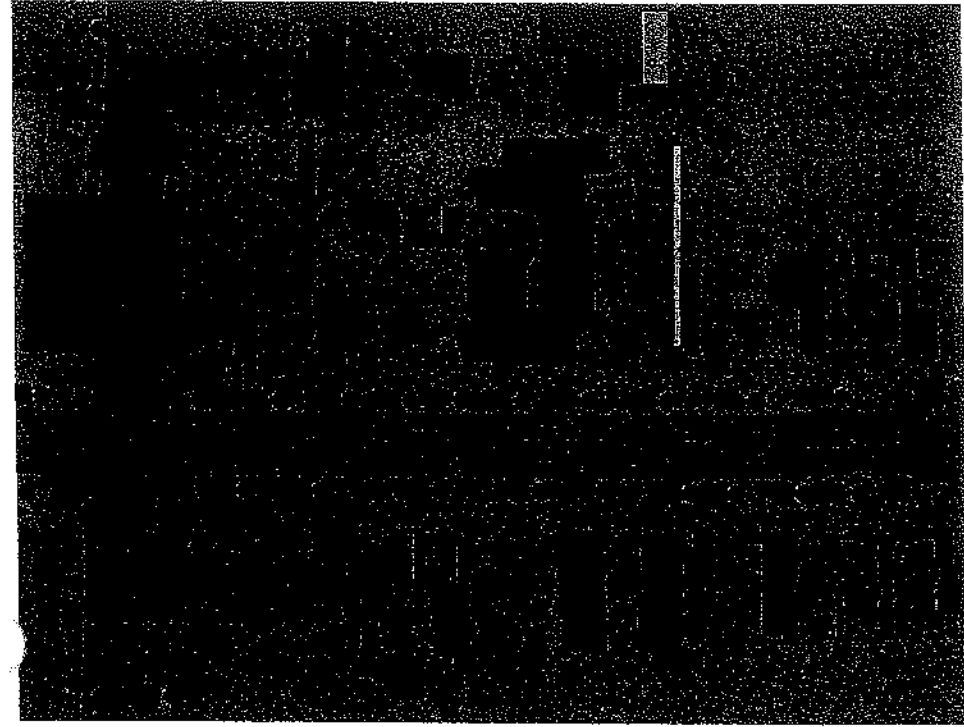


Harborside Apartments

41 State Street, Portland, ME

Vernal Equinox (21st March)

Proposed

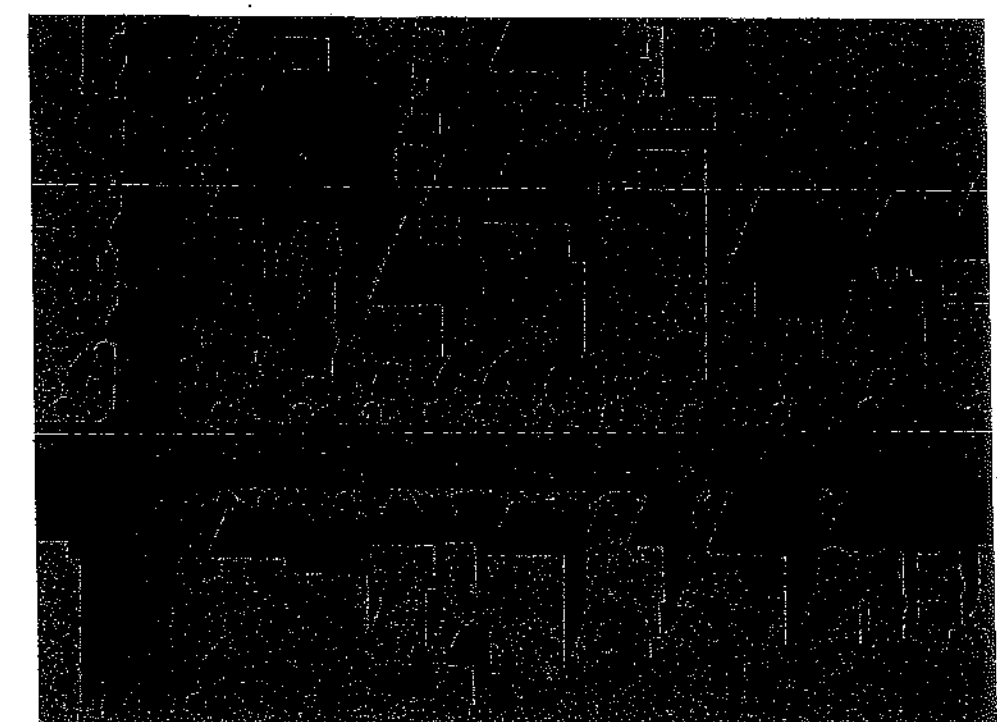
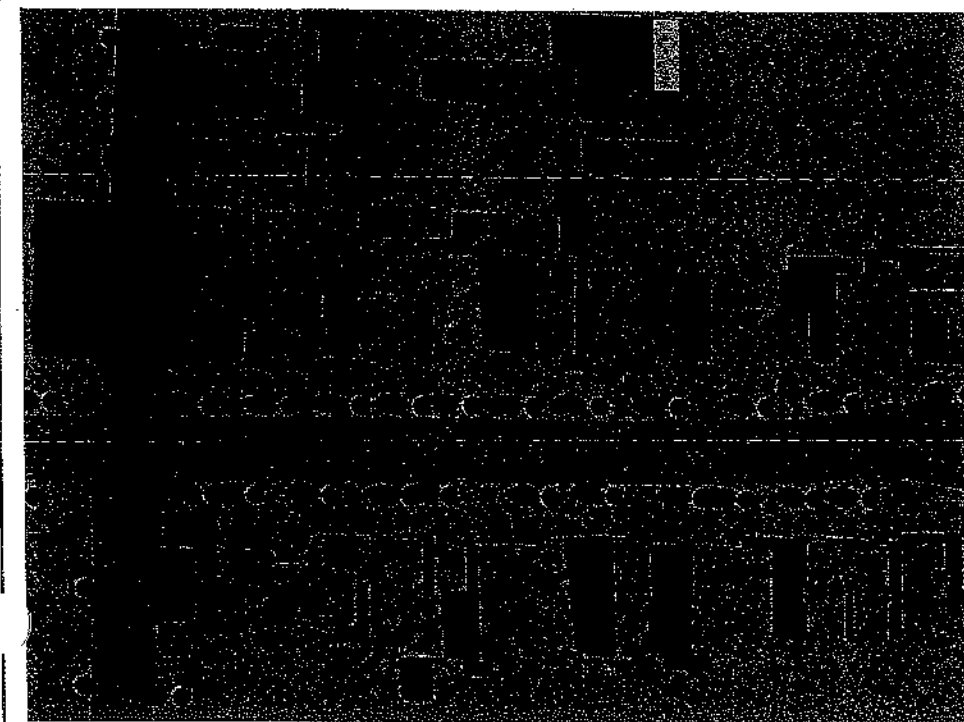


Existing

9 am

Noon

3 pm

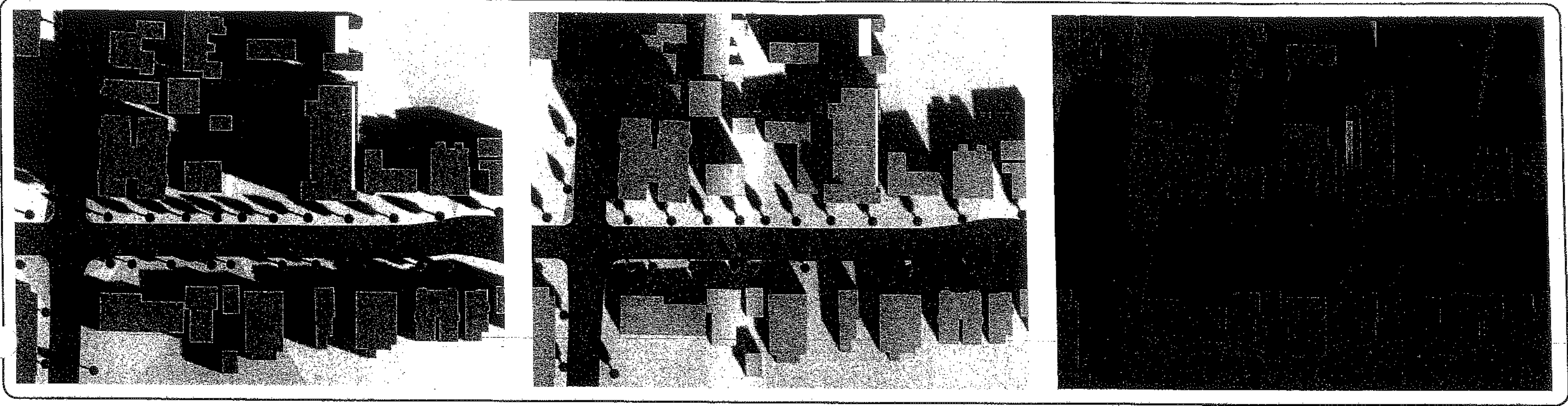


Harborside Apartments

41 State Street, Portland, ME

Winter Solstice (21st December)

Proposed

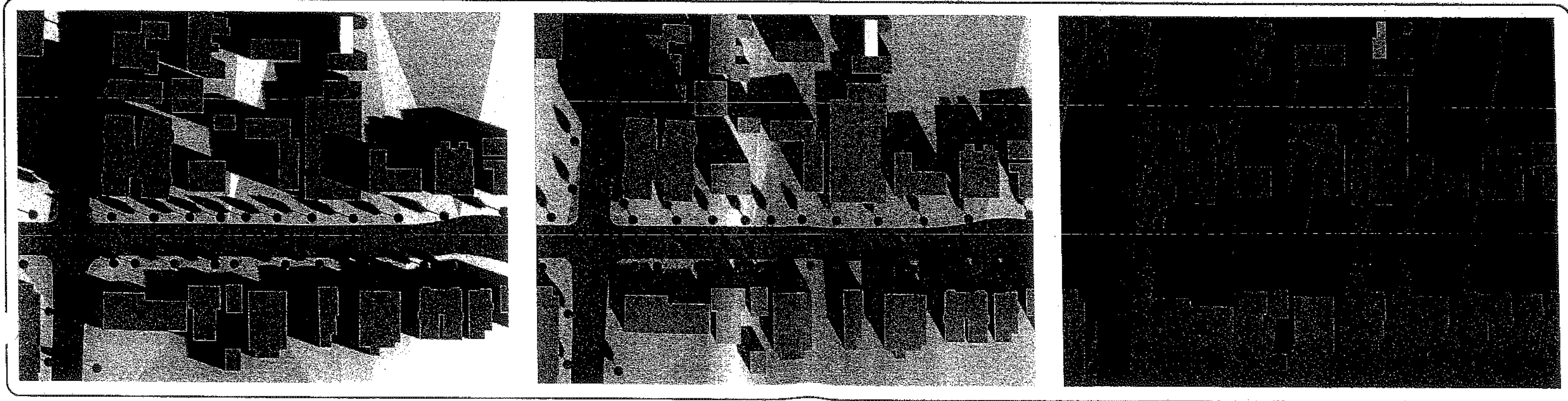


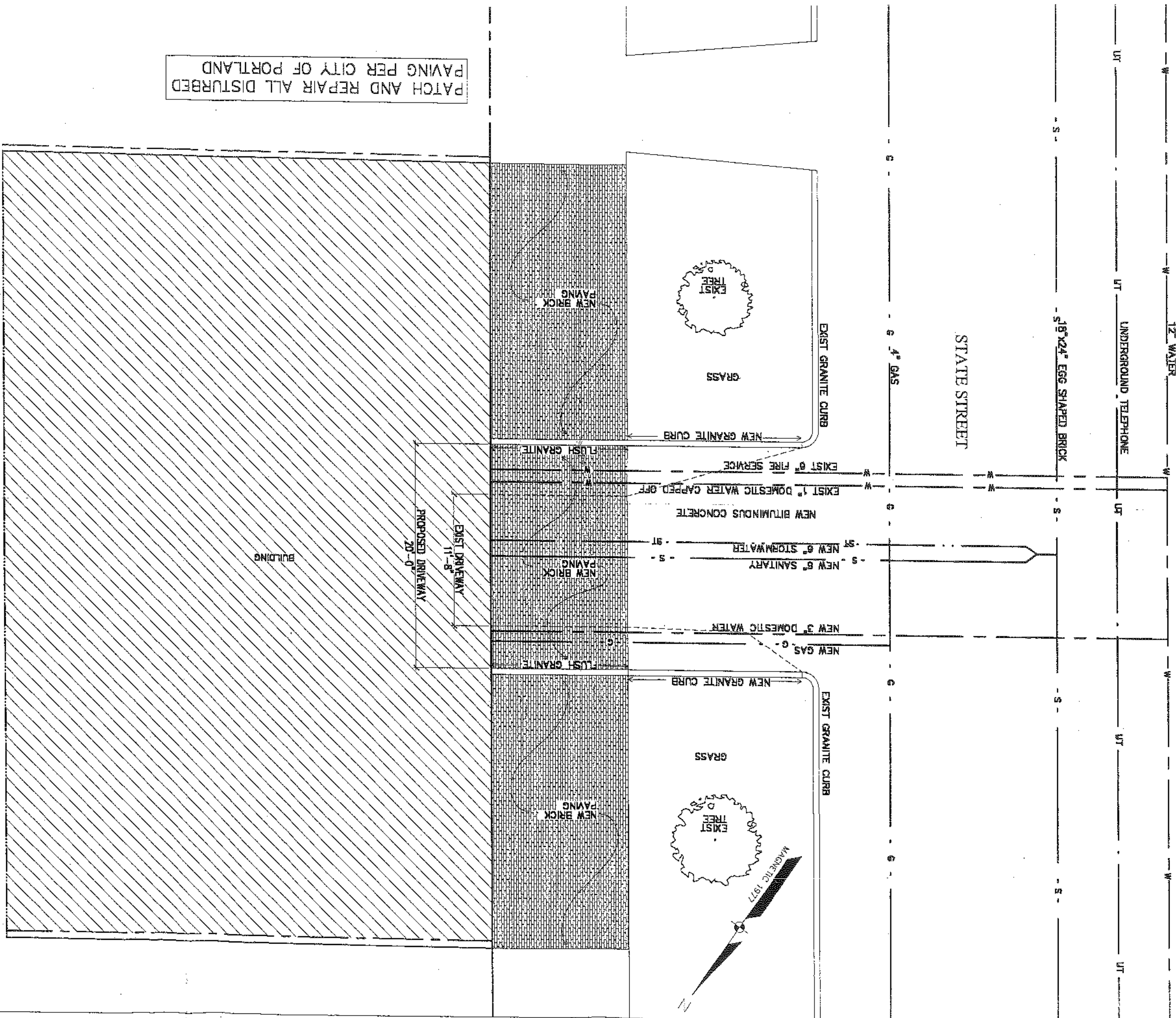
Existing

9 am

Noon

3 pm

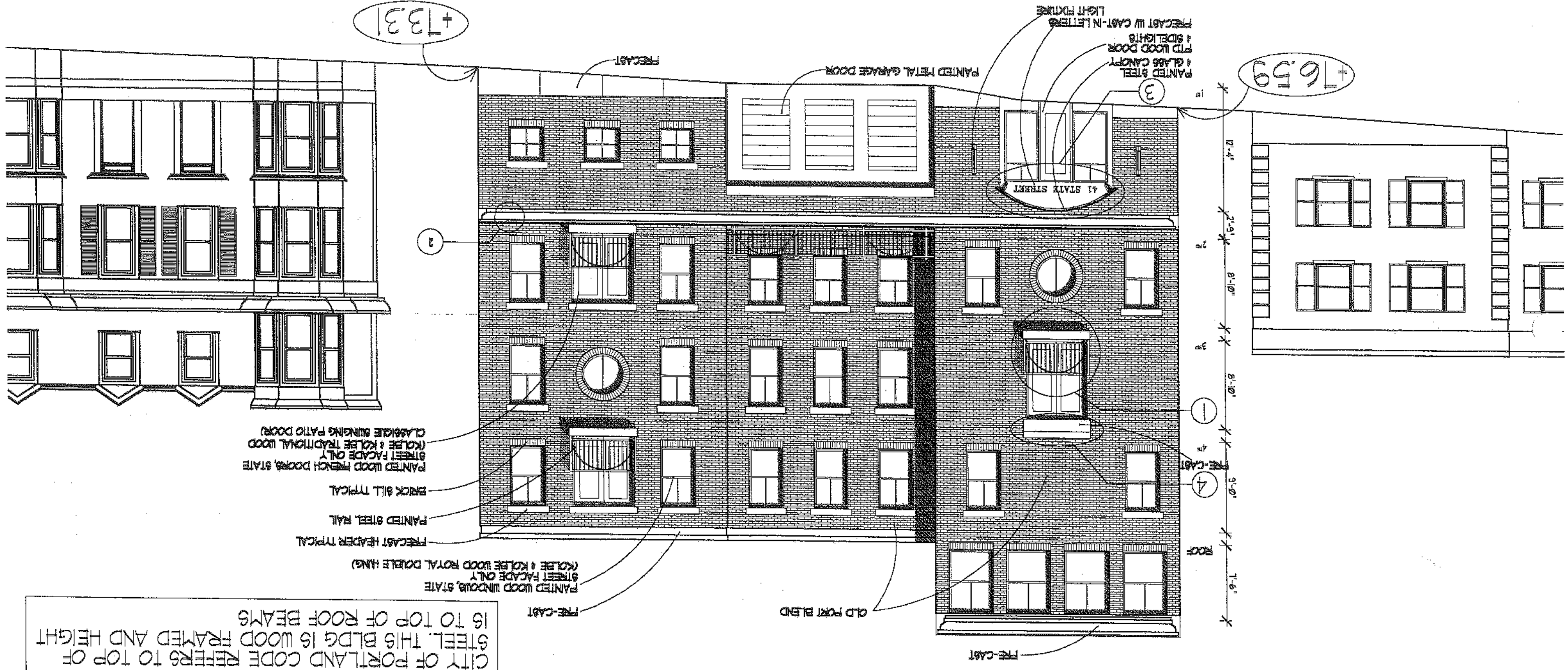
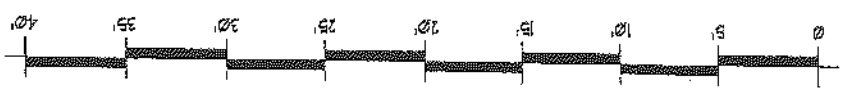




PATCH AND REPAIR ALL DISTURBED PAVING PER CITY OF PORTLAND

SITE PLAN	Jan 9, 2003	Project: HARBORSIDE APARTMENTS 41 STATE STREET, PORTLAND, MAINE	ARCHETYPE, P.A. ARCHITECTS 48 Union Wharf Portland, Maine 04101 (207) 772-6022 Fax (207) 772-4056	Developer: MAINE WORKFORCE HOUSING, LLC
	1/4" = 1'-0" Revisions			

144



MEAN AVERAGE GRADE = 72.2
 BLDG HEIGHT TO TOP OF STEEL PER CITY OF PORTLAND = 54'-0"
 NOTE:
 CITY OF PORTLAND CODE REFERS TO TOP OF STEEL. THIS BLDG IS WOOD FRAMED AND HEIGHT IS TO TOP OF ROOF BEAMS

MA
 02/03

A8

EAST ELEVATION

NOT TO SCALE

Feb 5, 2003

Project

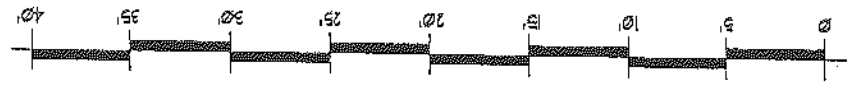
HARBORSIDE APARTMENTS

41 STATE STREET, PORTLAND, MAINE

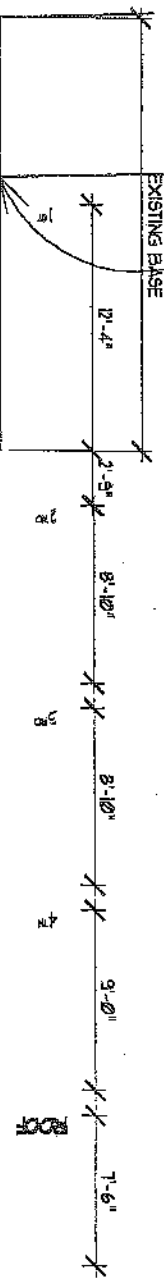
ARCHETYPE, P.A. ARCHITECTS

48 Union Wharf Portland, Maine 04101
(207) 772-8022 Fax (207) 772-4088

MAINE WORKFORCE HOUSING, LLC
Developers



+6.45



EXISTING CONCRETE

+70.9

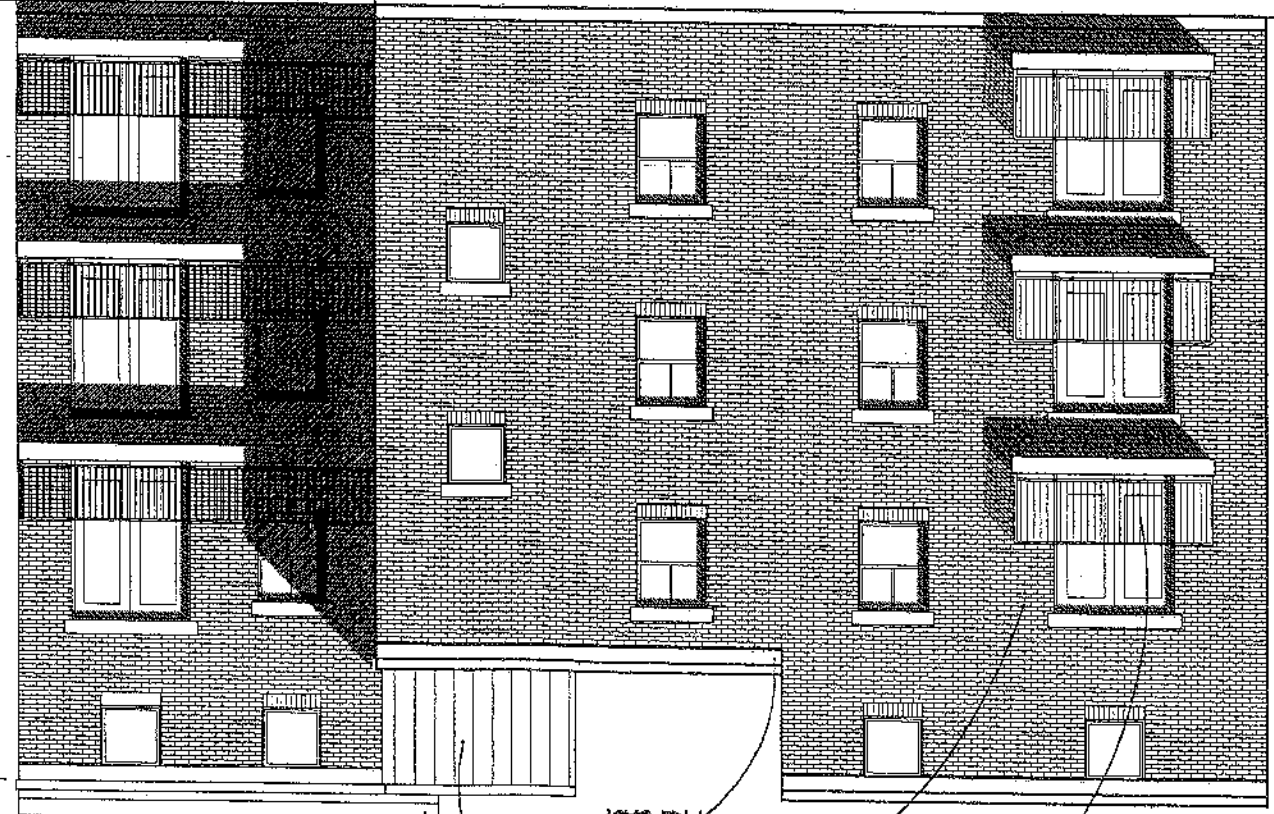
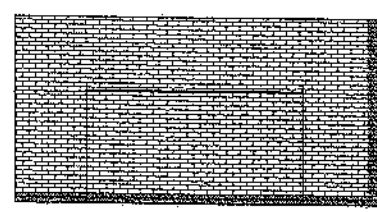
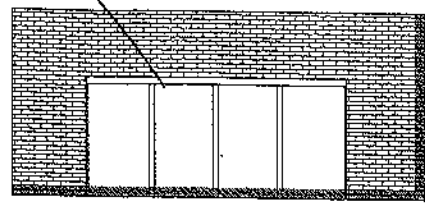
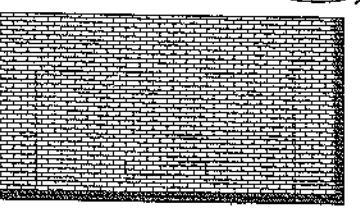
+75.1

+72.8

MEAN AVERAGE GRADE = 122

REMOVE WINDOWS
FILL WITH
CONC PANEL

54' = 0" TO TOP OF ROOF BEAMS



FIRE-CAST

BRICK

LEAD COATED COPPER

BLACK ALUMINUM RAIL

FIRE-CAST

AREA (RIGHT)

WALL = 1350 sqFT
OPENINGS = 225 sqFT

PERCENTAGE = 18%

AREA (LEFT)

WALL = 2452 sqFT
OPENINGS = 945 sqFT

PERCENTAGE = 38%

AREA (OVERALL)

WALL = 3703 sqFT
OPENINGS = 3195 sqFT

PERCENTAGE = 86%

RAH
2/5

A9

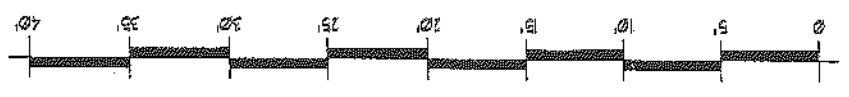
SOUTH ELEVATION

Feb 6, 2003
NOT TO SCALE
REVISIONS

Project:
HARBORSIDE
APARTMENTS
41 STATE STREET,
PORTLAND, MAINE

ARCHITYPE, P.A.
ARCHITECTS
48 Union Wharf Portland, Maine 04101
(207) 772-8022 Fax (207) 772-4056

Developer:
MAINE WORKFORCE
HOUSING, LLC



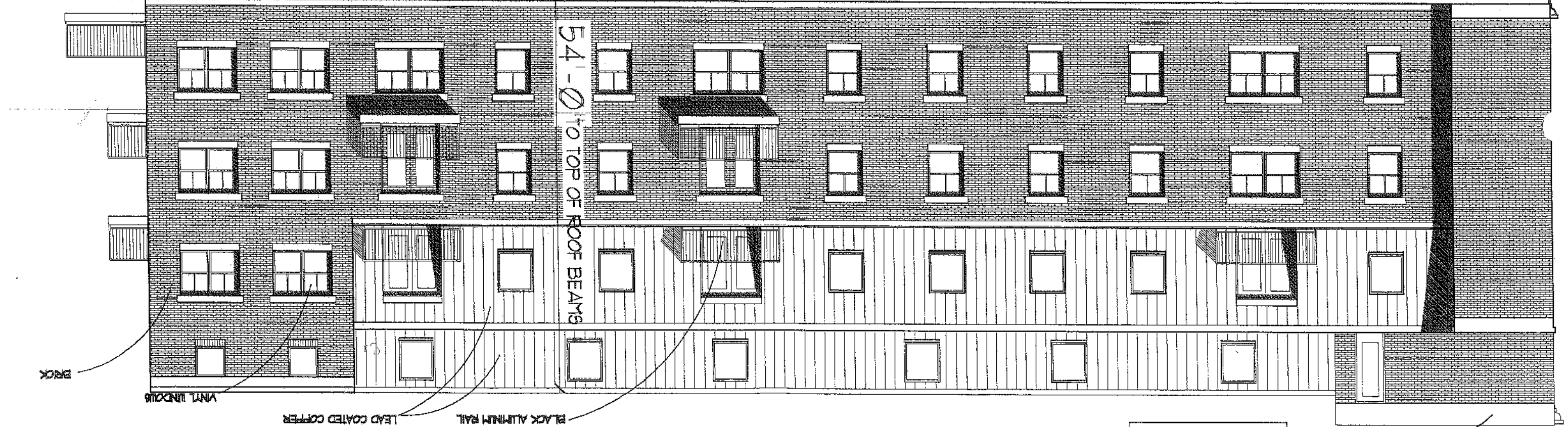
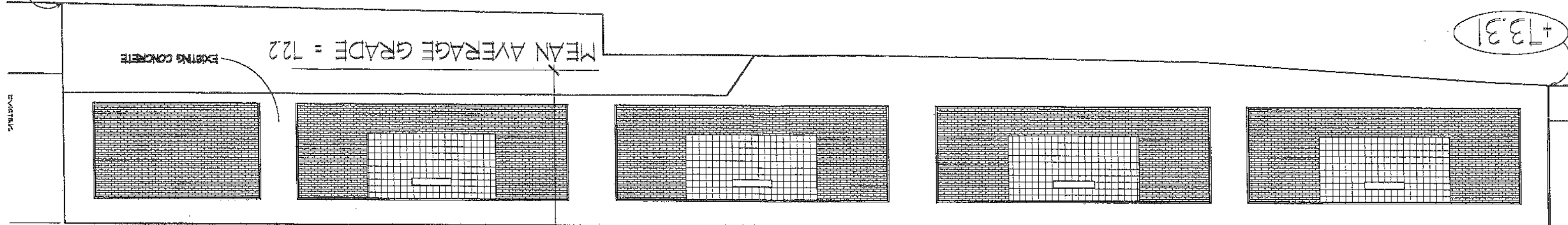
+64.5

+73.31

MEAN AVERAGE GRADE = 72.2

EXISTING CONCRETE

EXISTING



AREA CALCS:
WALL = 7591 sqft
OPENINGS = 806 sqft
PERCENTAGE = 10.6%

PRE-CAST

BLACK ALUMINUM RAIL
LEAD COATED COPPER

VINTL WINDOWS

BRICK

AH
2c

A10

NORTH ELEVATION

NOT TO SCALE
Revisions

Feb 8, 2003
Project

HARBORSIDE
APARTMENTS
41 STATE STREET,
PORTLAND, MAINE

ARCHETYPE, P.A.
ARCHITECTS

48 Union Wharf Portland, Maine 04101
(207) 772-8032 Fax (207) 772-4058

MAINE WORKFORCE
HOUSING, LLC
Developer

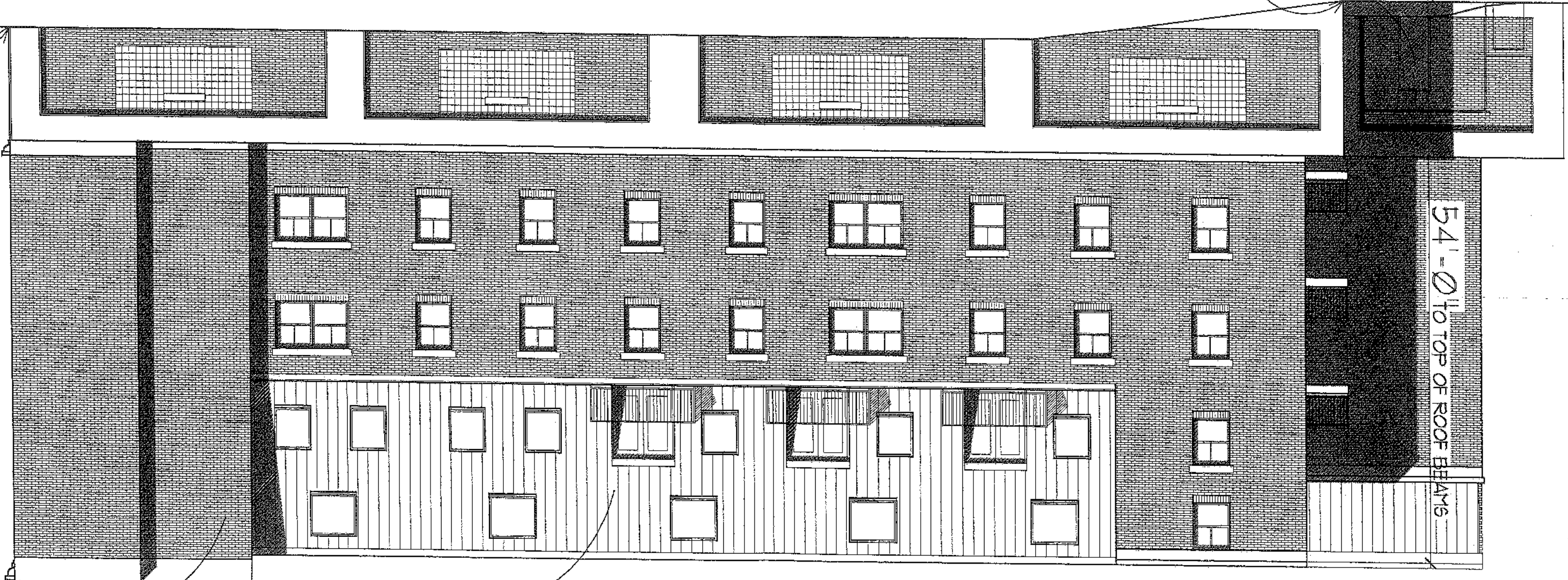


MEAN AVERAGE
GRADE = 12.2

NEW DOOR

+12.8

+16.59



54' - 0" TO TOP OF ROOF BEAMS

AREA (RIGHT):
WALL = 6276 sqFT
OPENINGS = 641 sqFT
PERCENTAGE = 102%

AREA (OVERALL):
WALL = 7423 sqFT
OPENINGS = 662 sqFT
PERCENTAGE = 8.9%

LEAD COATED COPPER

BRICK

44
28

