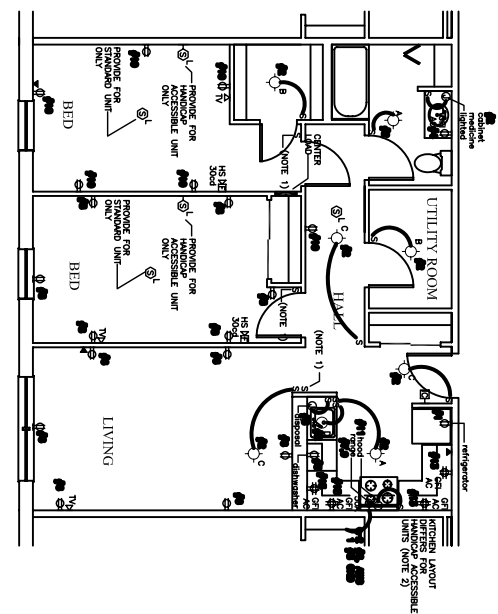
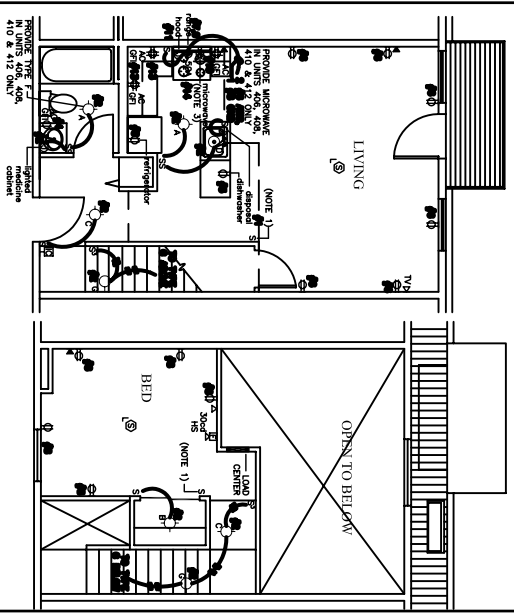


TYPICAL 2 BEDROOM MARKET-RATE UNIT - UNIT TYPE A
 (TYPICAL UNITS 307, 308, 309, 307, 403, 404 & 407)

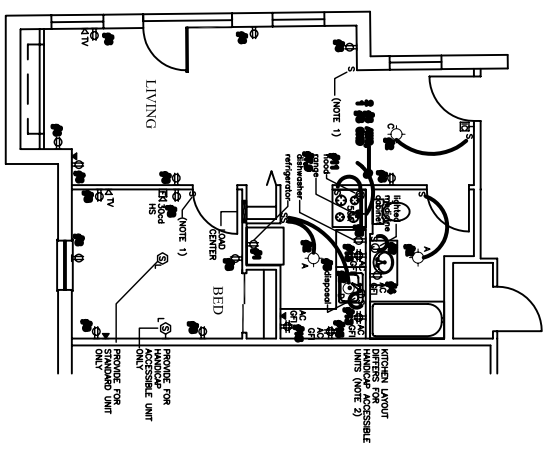


TYPICAL 2 BEDROOM SUBSIDIZED UNIT - UNIT TYPE B
 (TYPICAL UNITS 301, 302, 303 & 304)
 (HANDICAP ACCESSIBLE UNITS 202 & 203)

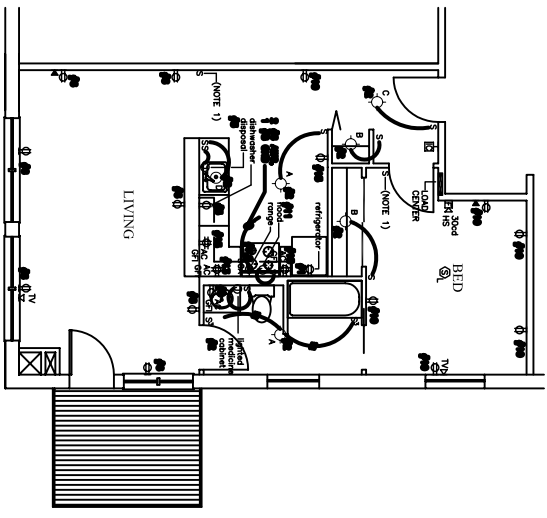


TYPICAL 1 BEDROOM LOFT UNIT - UNIT TYPE C
 (TYPICAL UNITS 402, 404, 406, 408, 410 & 412)

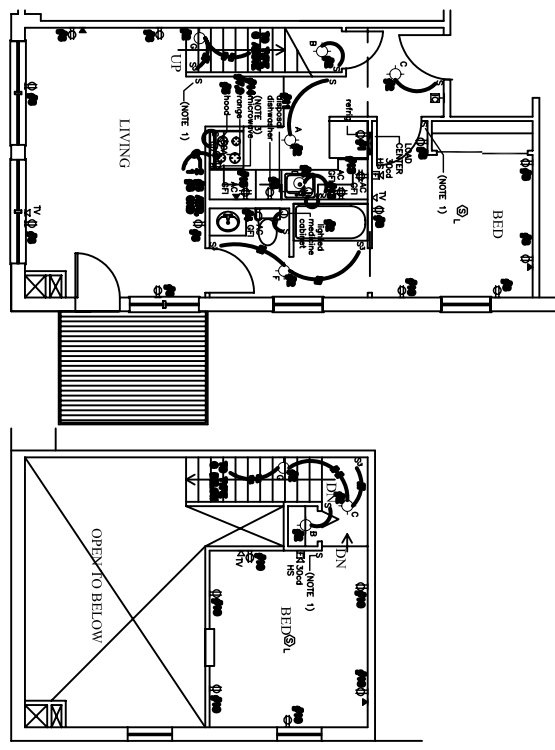
- NOTES:
1. INDICATED SWITCH TOP HALF OF QUALITY RECEPTACLES, BOTTOM HALF W/RT AT ALL TIMES.
 2. FOR UNITS INDICATED AS HANDICAP ALL LIGHT AND POWER SWITCHES SHALL BE COULDED SO THAT THEY ARE AMENABLELY ACCESSIBLE WITHOUT REACH OVER COUNTERS.
 3. MOUNT RECEPTACLES FOR KITCHENS ABOVE RANGE HOOD.



TYPICAL 1 BEDROOM UNIT - UNIT TYPE D
 1/4" = 1'-0"
 (TYPICAL UNITS 201 & 201)
 (HANDICAP ACCESSIBLE UNIT 401)



TYPICAL 1 BEDROOM UNIT - UNIT TYPE E
 1/4" = 1'-0"
 (TYPICAL UNITS 209 & 209)



TYPICAL 2 BEDROOM LOFT UNIT - UNIT TYPE F
 1/4" = 1'-0"
 (TYPICAL UNIT 400)

E3

DETAIL PLANS
 TYPICAL UNIT TYPES

May 27, 2003
1/4" = 1'-0"
Revisions

Project:
CASCO TERRACE
 41 STATE STREET,
 PORTLAND, MAINE

ARCHETYPE, P.A.
 ARCHITECTS
 48 Union Wharf Portland, Maine 04101
 (207) 772-6022 Fax (207) 772-4056

Developer:
**MAINE WORKFORCE
 HOUSING, LLC**