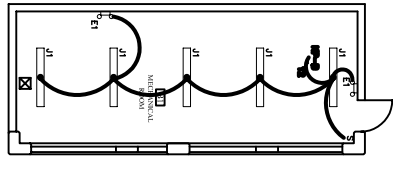
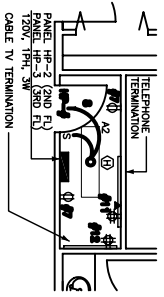


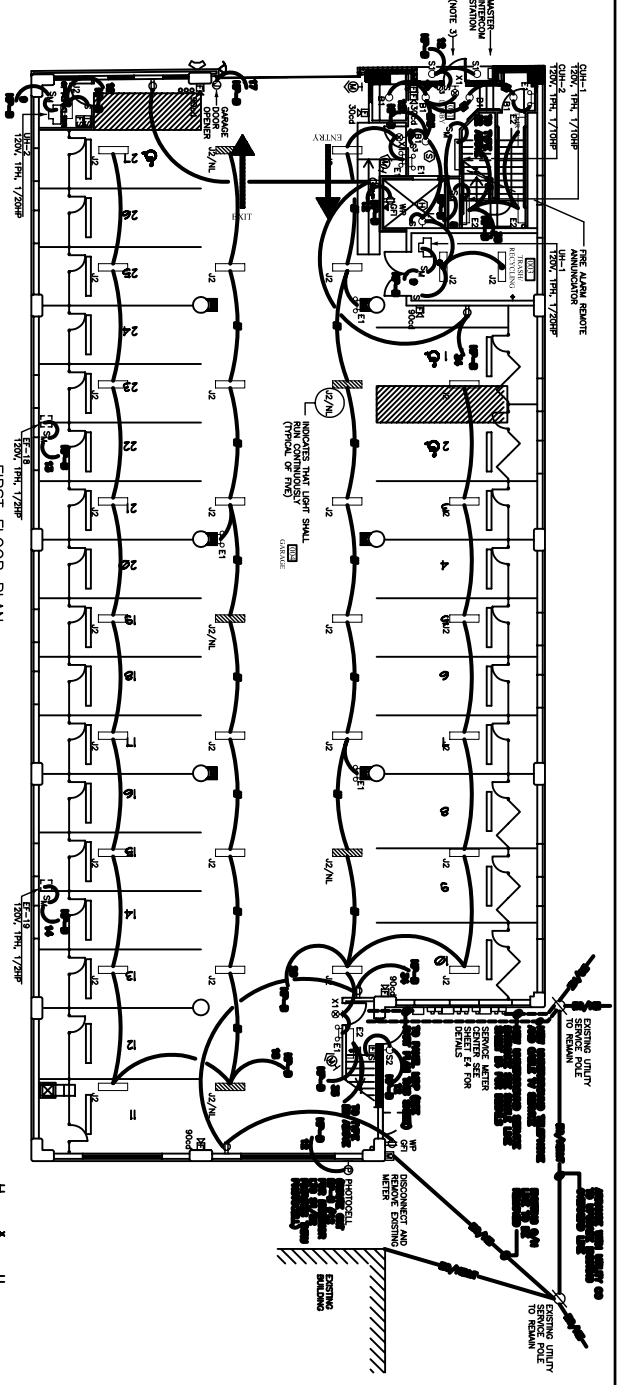
BASMENT POWER PLAN
1/8" = 1'-0"



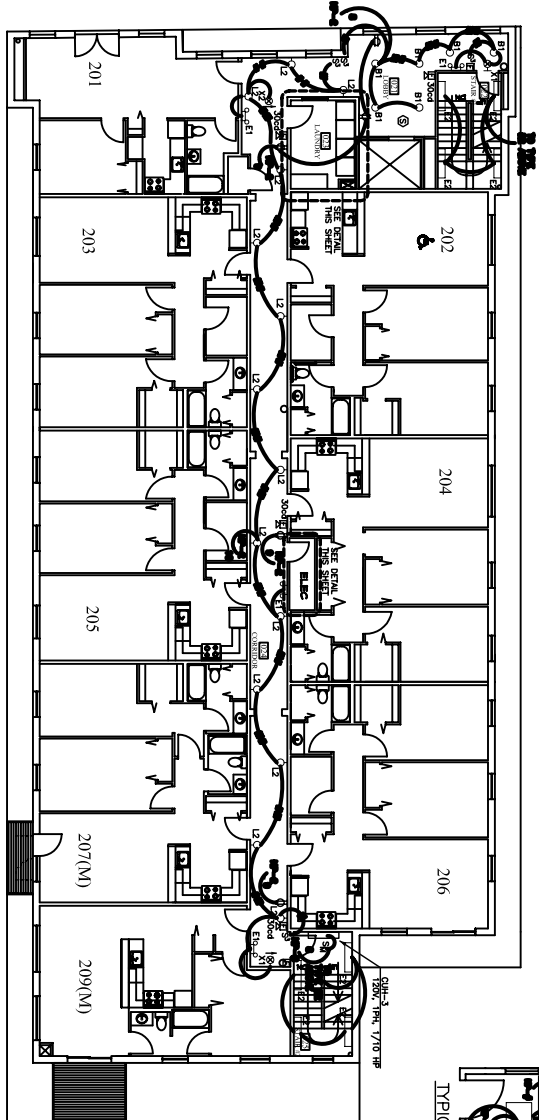
BASMENT LIGHTING PLAN
1/8" = 1'-0"



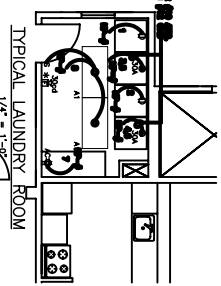
ELECTRICAL ROOM SECOND/THIRD FL.
1/4" = 1'-0"
(NOTE 1)



FIRST FLOOR PLAN
1/8" = 1'-0"



SECOND FLOOR PLAN
1/8" = 1'-0"



TYPICAL LAUNDRY ROOM
1/4" = 1'-0"
(NOTE 1)

- NOTES:**
1. ALL LIGHTING FIXTURES IN TYPICAL ROOMS (SEE PLAN) ARE LOCATED ON THE SAME FLOOR.
 2. DETECTORS LOCATED AT CHANGE ENTRANCES, CONTROL ROOMS, AND SERVICE ENTRANCES SHALL BE OF THE POINT-TO-POINT TYPE.
 3. DETECTORS FOR ROOM ACCESS CONTROL, WIRELESS DETECTORS.

E1	May 21, 2003	Project: CASCO TERRACE	ARCHETYPE, P.A. ARCHITECTS	Developer: MAINE WORKFORCE HOUSING, LLC
	1/8" = 1'-0"	41 STATE STREET, PORTLAND, MAINE	48 Union Wharf Portland, Maine 04101 (207) 772-6022 Fax (207) 772-4056	
BASEMENT, FIRST FLOOR AND SECOND FLOOR				
Revisions				