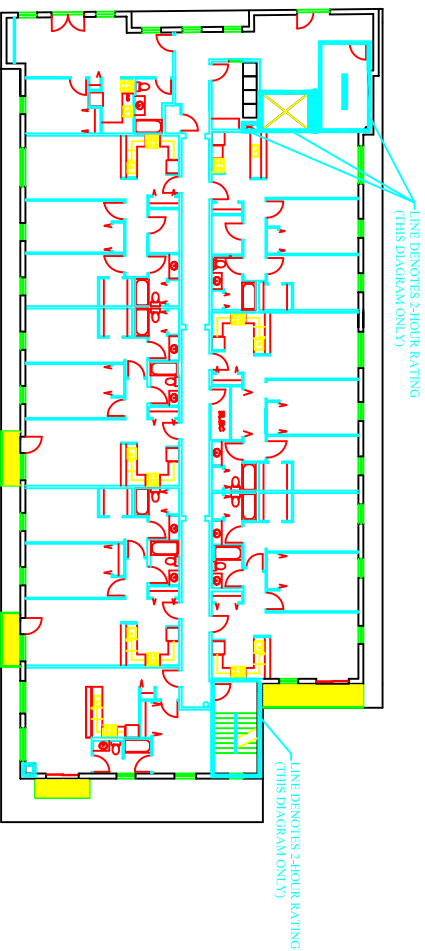
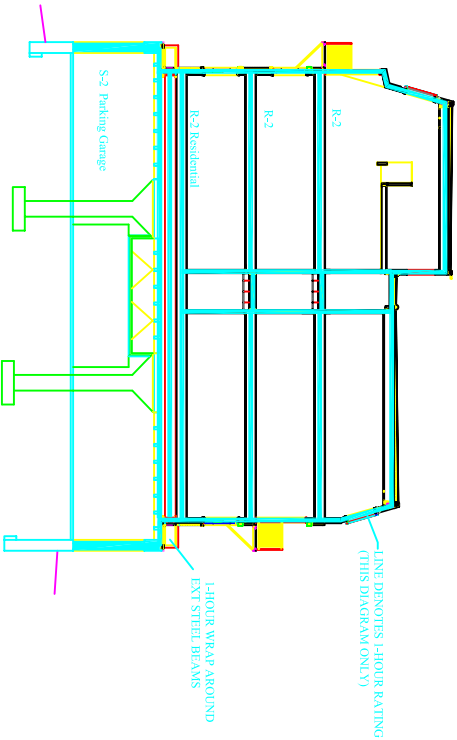


Casco Terrace

41 State Street
Portland, ME



Relevant Codes

BOCA 1999

Code Reference	Construction Type S-A	Code Reference
310	Use Group R-2 (Residential)	T-503
408.2	Use Group S-2 (Storage)	T-503
906.2.2	R-2 Sprinkled w/NFPA 13R	10200 - 20% S2 =
906.2.1	S-2 Sprinkled w/NFPA 13	24480 SqFT Allowed w/Sprinkler
		8395 SqFT Proposed
T-503	Construction Type S-A	4 Stories Allowed w/Sprinkler
	For Use Group R-2	4 Stories Allowed w/Sprinkler
	10200 - 20% S2 =	60' Height Allowed w/Sprinkler
	16300 SqFT allowed w/Sprinkler	54' Allowed by Zoning
	8395 SqFT Proposed	53' 6" Proposed
504.2	4 Stories Allowed w/Sprinkler	Building Use - Separated
	4 Stories Proposed	Required Separation 1 hour
504.2	60' Height Allowed w/Sprinkler	313.1.1.2 Excep.

Fire Resistance

Code Reference	Fire Resistance	Code Reference
T-402	Ext. & Int. Loadbearing - 1 Hour	915.2.1
	Exit Stairs - 2 Hour	916
	4 Story Shaft - 2 Hour	918.4.6
	3 Story or Less Shaft - 1 Hour	920.3.2
	Corridor - 1/2 Hour	
	D/U Separation - 1 Hour	
	Floors, Roof & Structure - 1 Hour	
	Draftstop Party Walls	721.7.1.1
	Non D/U Draftstop Max 1000 SqFT	721.7.1.3
	Max Opening Area = 15% @ 3' to 5'	T-705.3
	Proposed on North Elevation = 10.2%	
	Proposed on South Elevation = 10.6%	
	S-2 occupant load $\frac{900}{\text{sqm}}=48$	T1008.1.2
	Inswinging door permitted in S2	1017.4
	3' Elevator vent required	3007.3
	Occ. Load $\frac{800}{\text{sqm}}=42$	10081.2
	Min Req. Corridor Width=36"	1011.3

NFPA 101-1999

Accessibility Code
Maine Human Rights -10% Accessible (3 Units)
w/ Design per ANSI A117.1-1986
All other units adaptable per
Fair Housing Act