

PRELIMINARY



MARK
MUELLER
ARCHITECTS

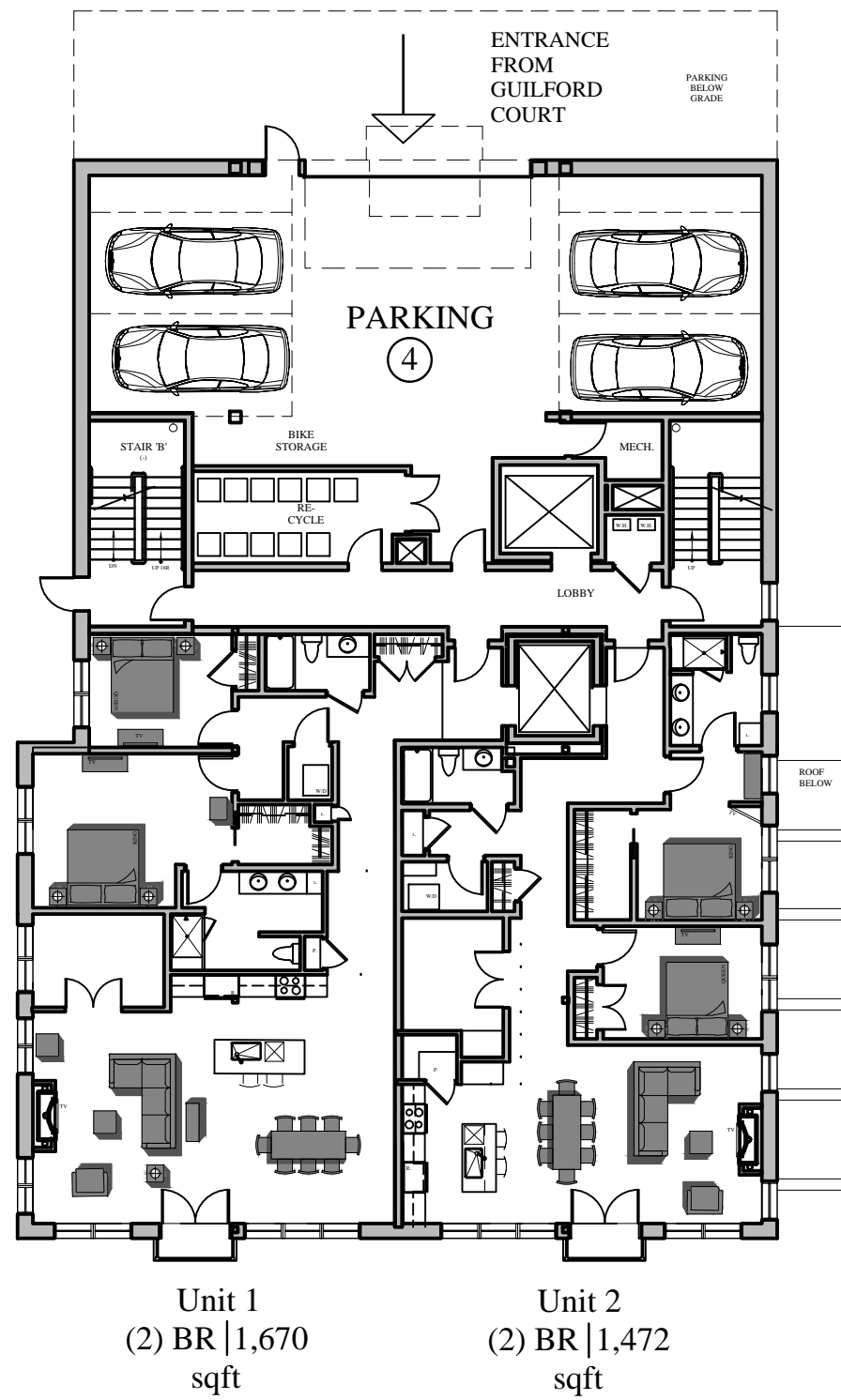
**BUILDING
AREA:**

LOWER LEVEL: 7,089 SF
FIRST FLOOR: 6,194 SF
SECOND FLOOR: 6,145 SF
THIRD FLOOR: 6,145 SF
FOURTH FLOOR: 5,889 SF

TOTAL: 31,462 SF

FIRST FLOOR PLAN

1/16" = 1'-0"



YORK STREET
161

A-1.1
November 8,
2016