

PORT & GUY
ARCHITECTURE
65 NEWBURY STREET
PORTLAND, ME 04101
207.761.9000
fax: 207.761.2010
info@portcityarch.com

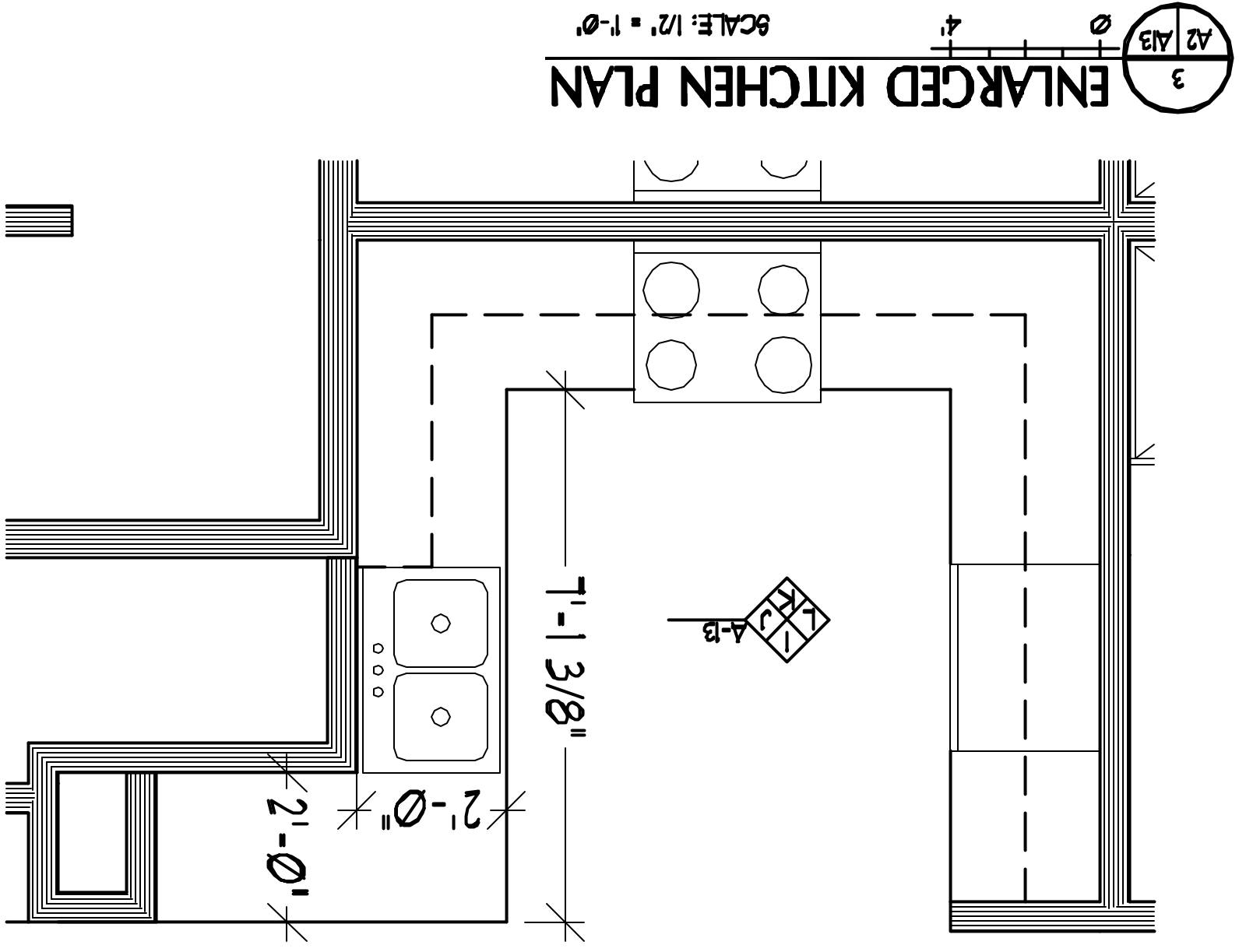
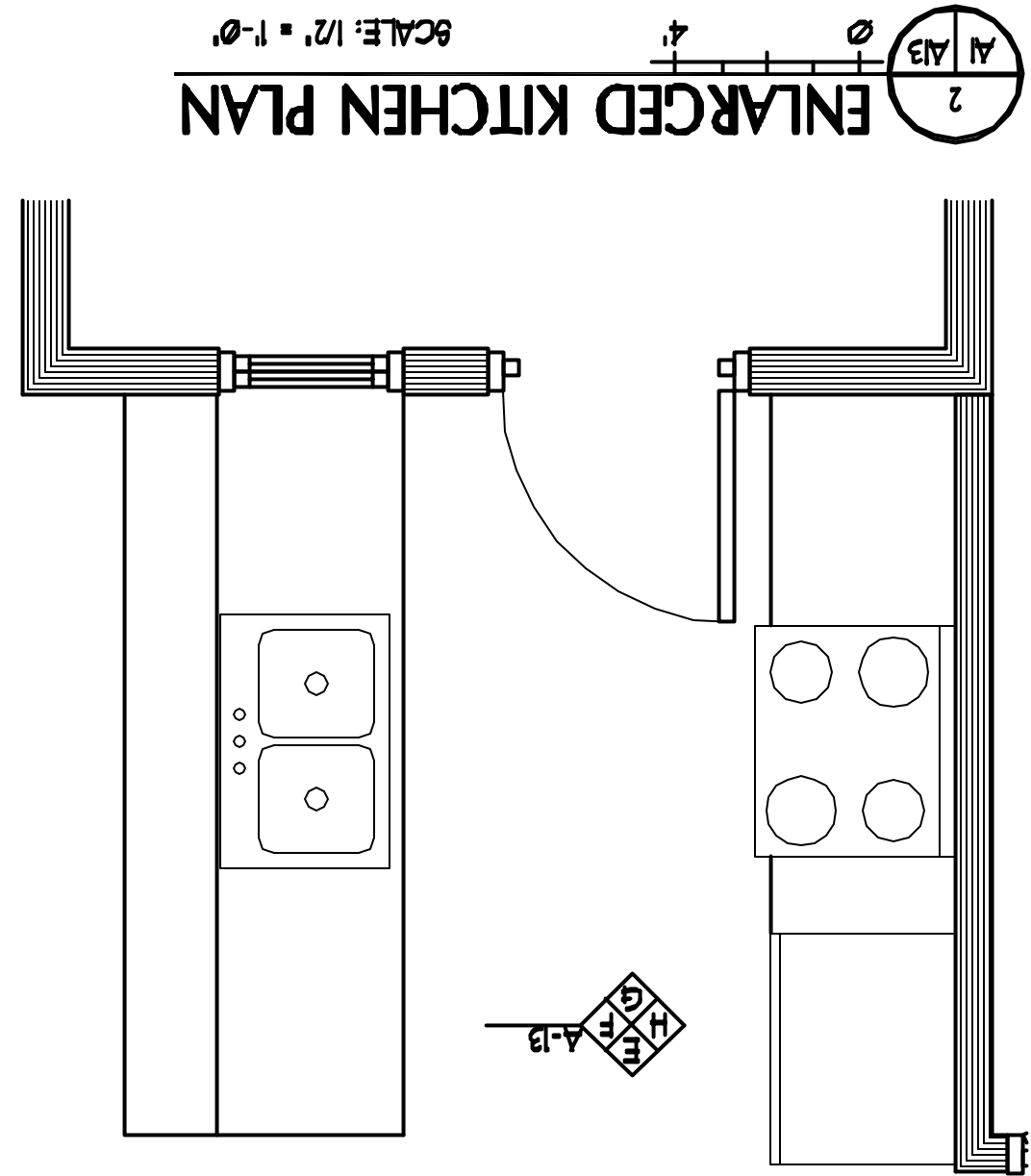
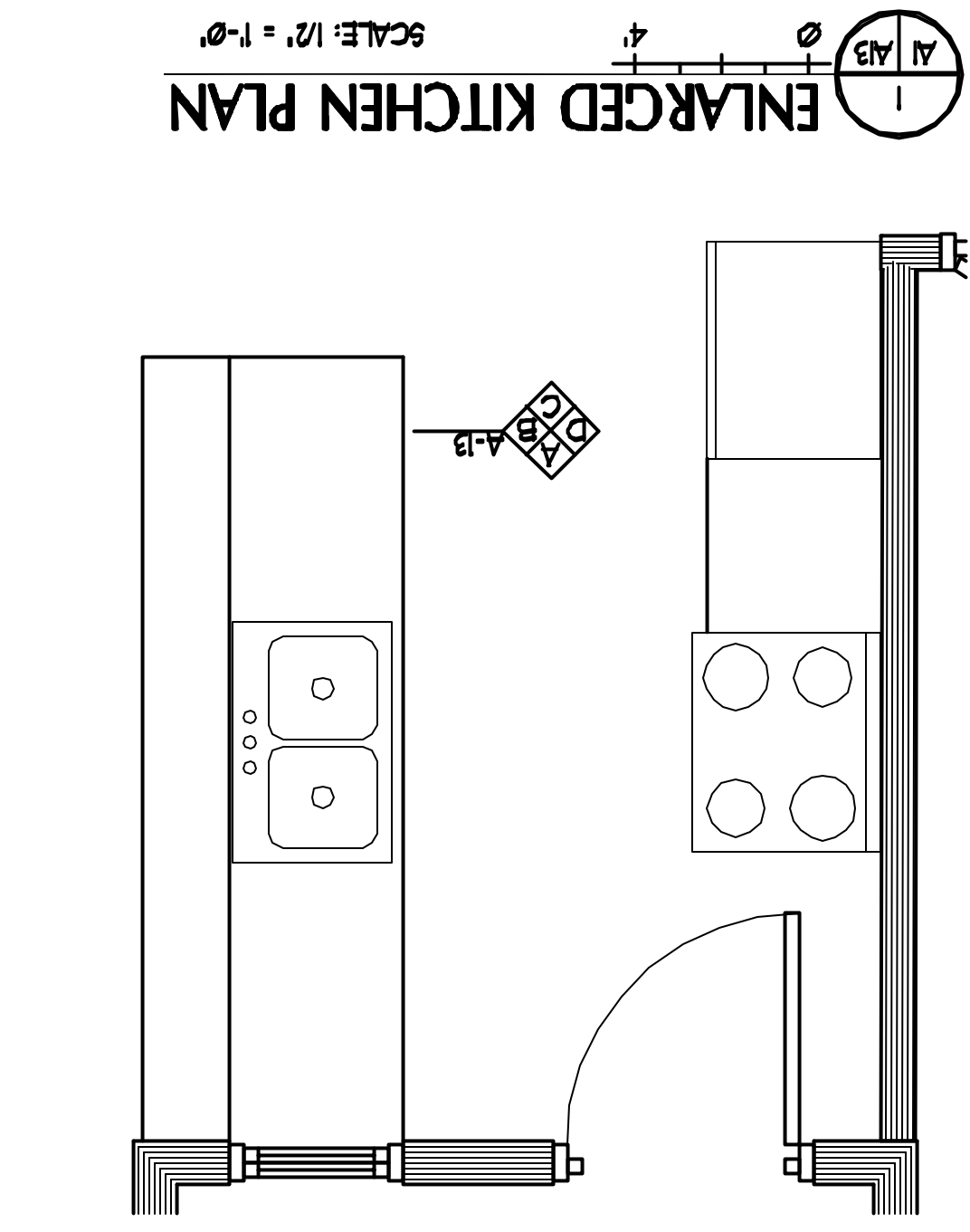
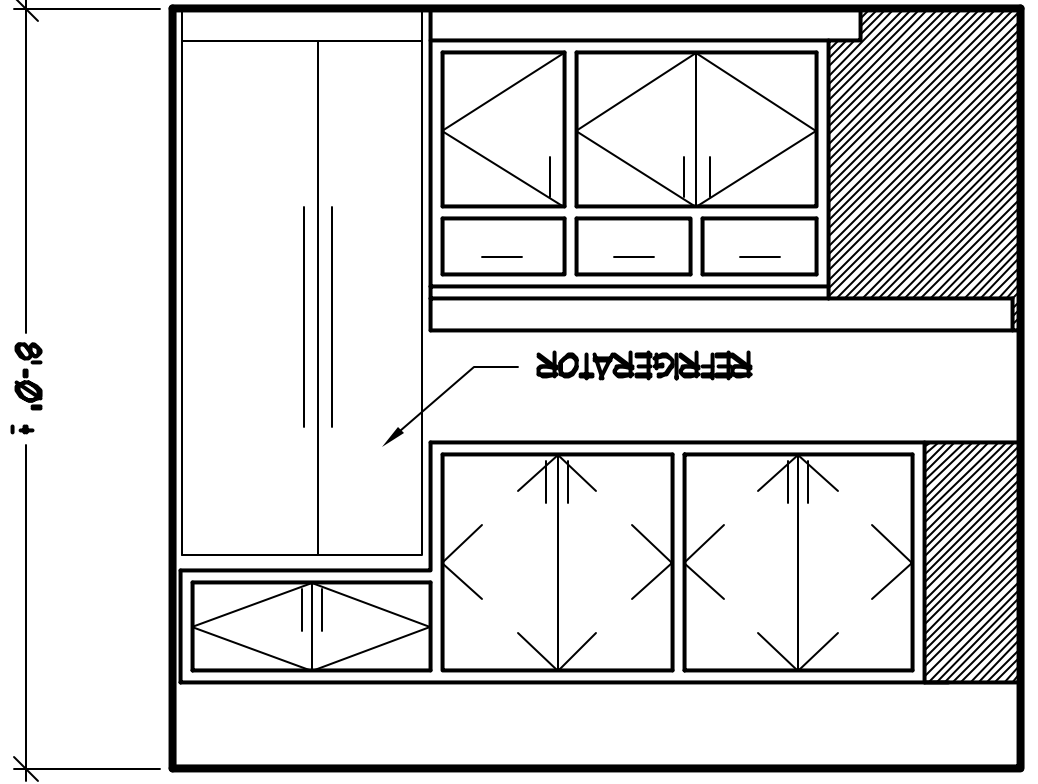
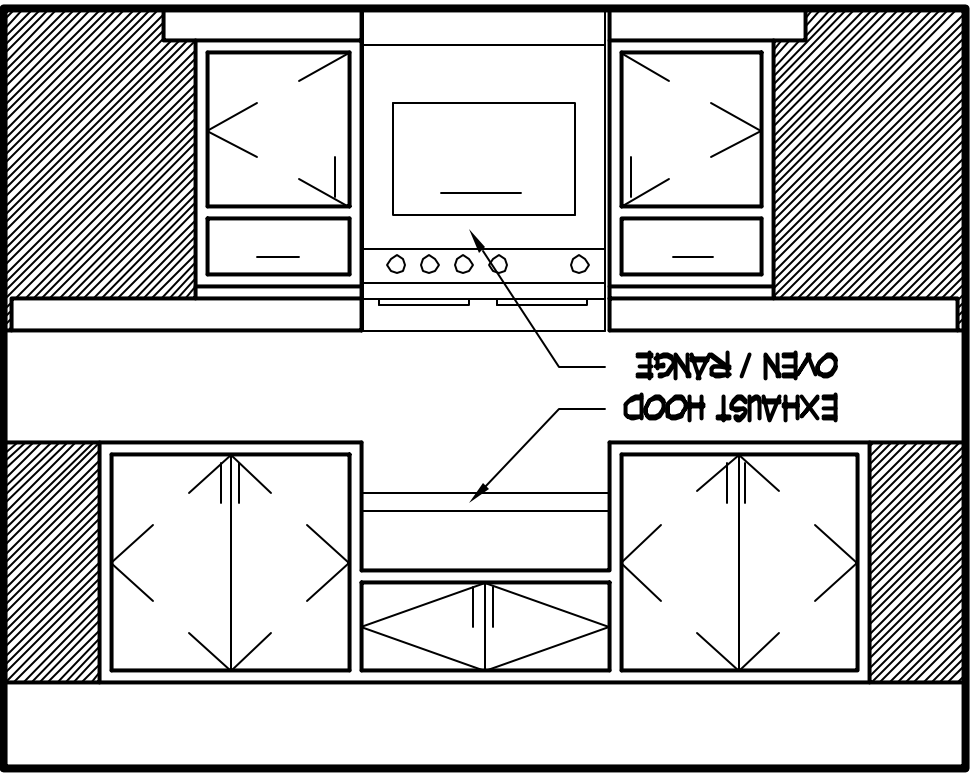
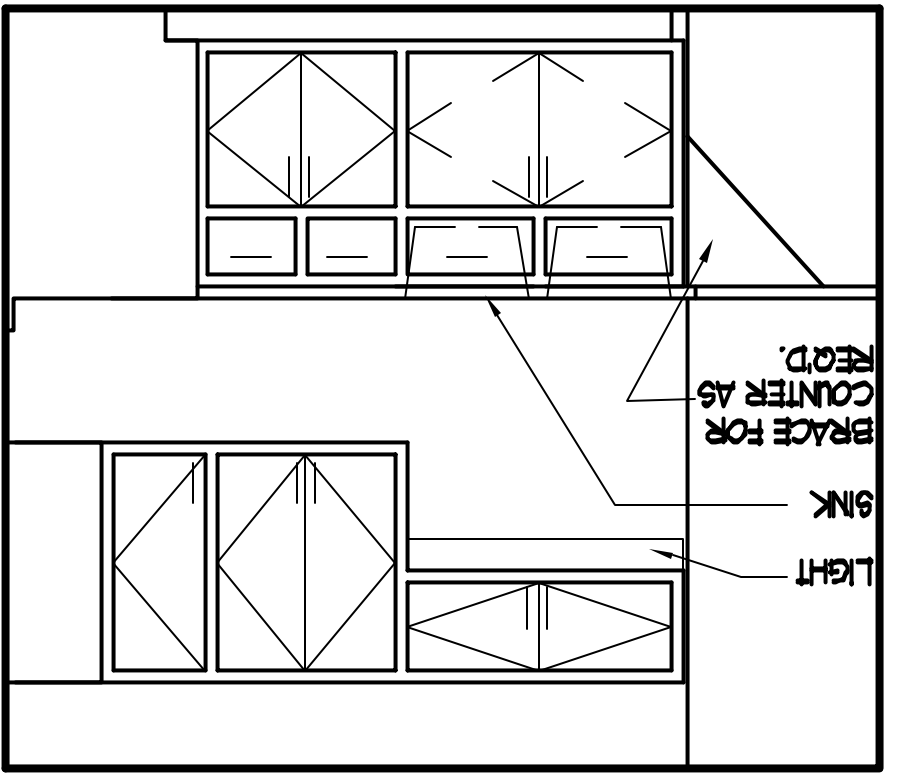
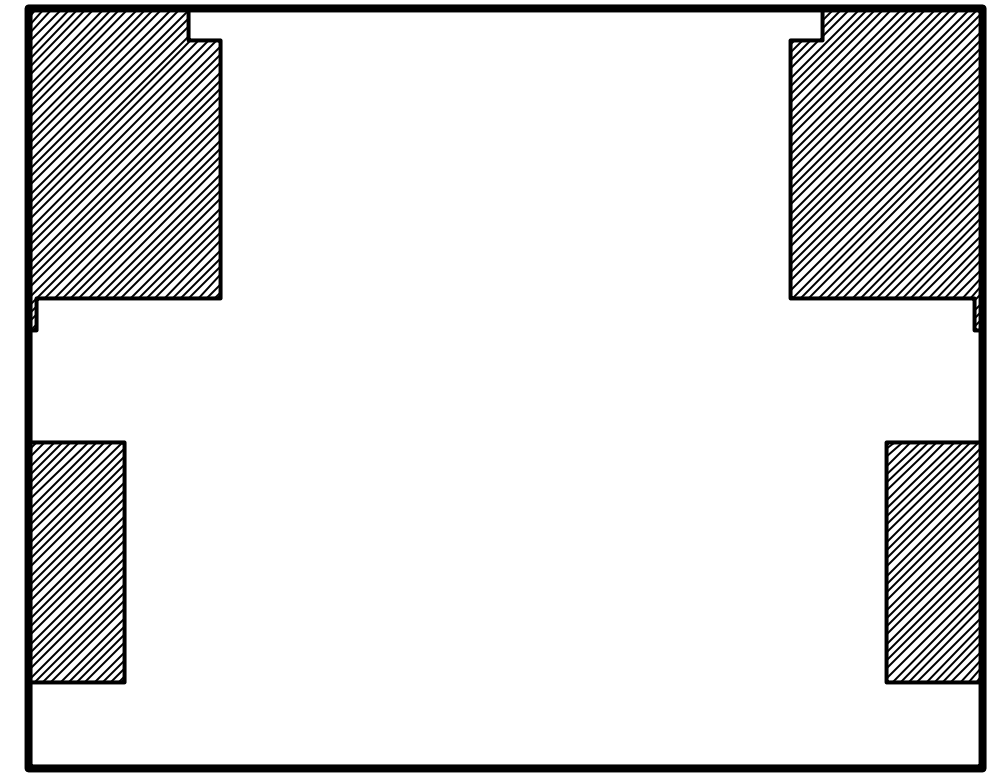
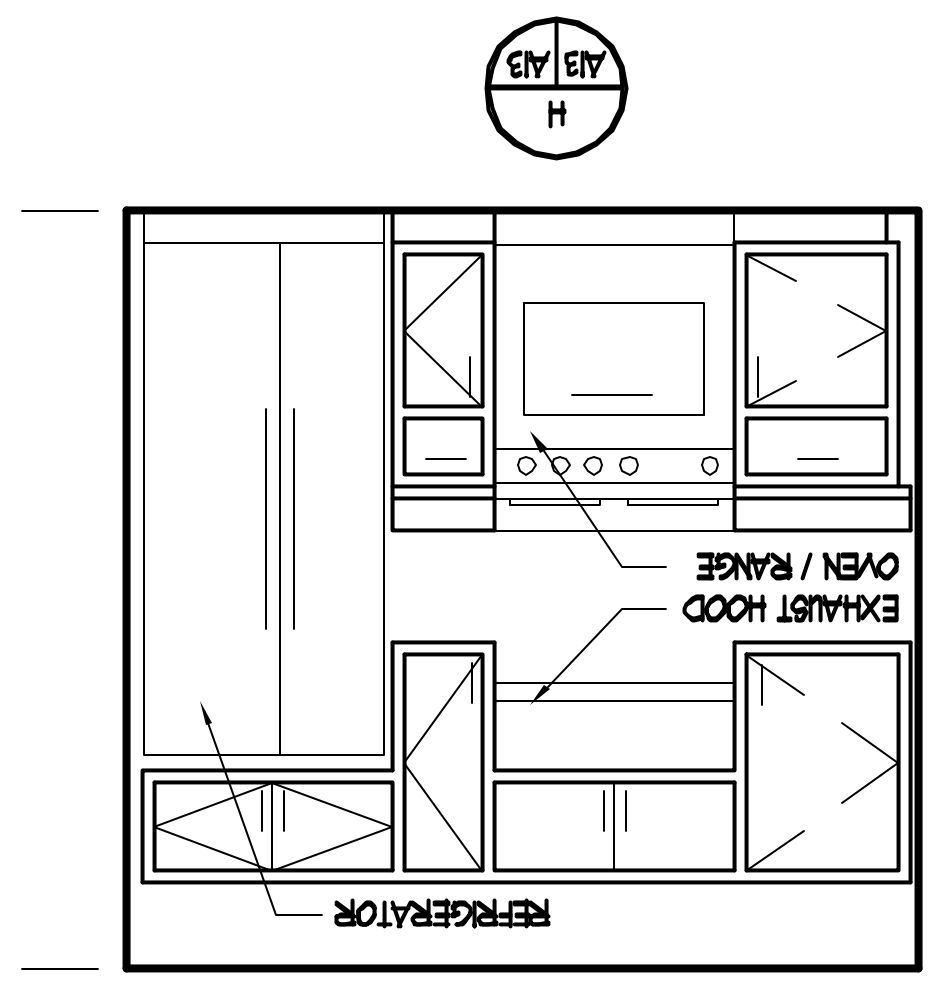
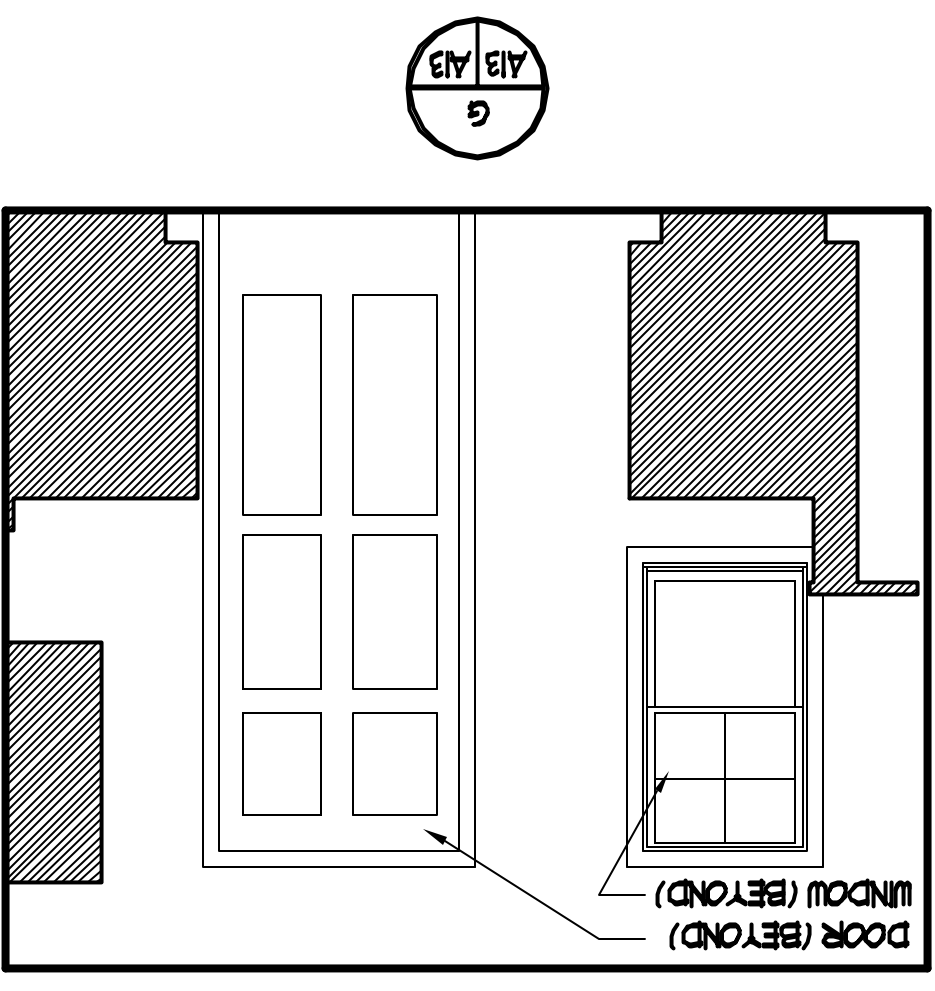
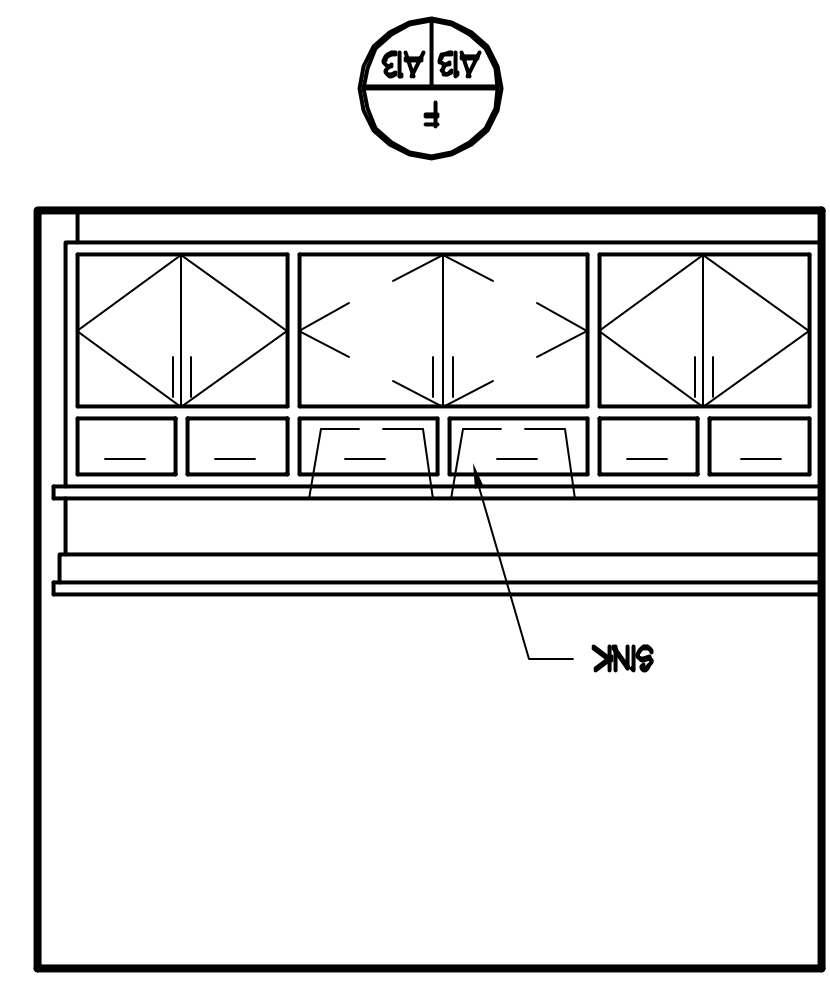
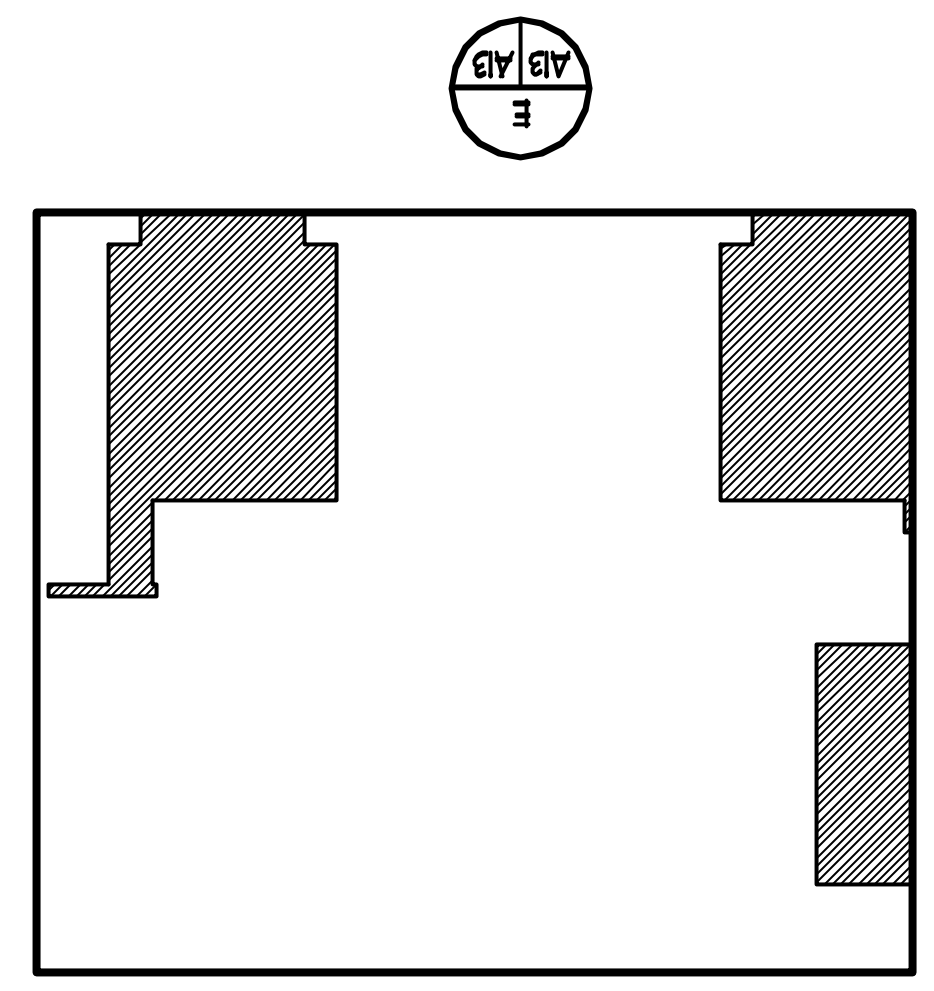
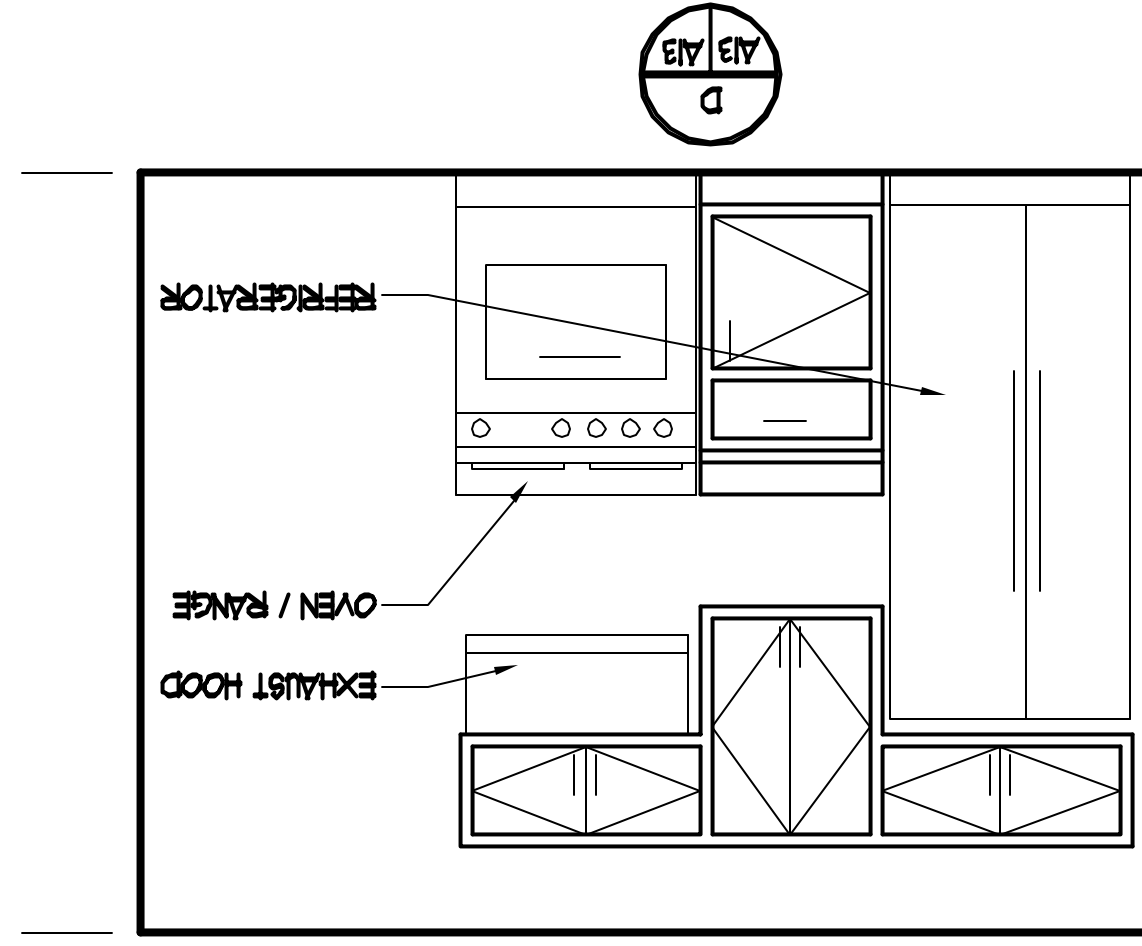
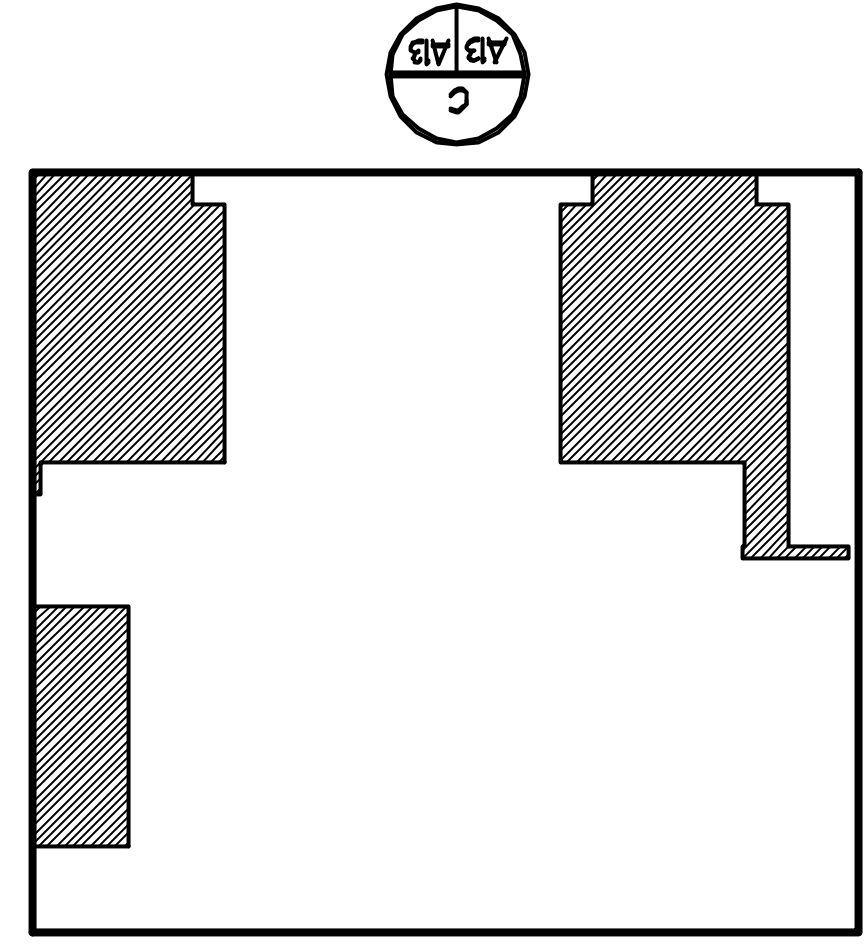
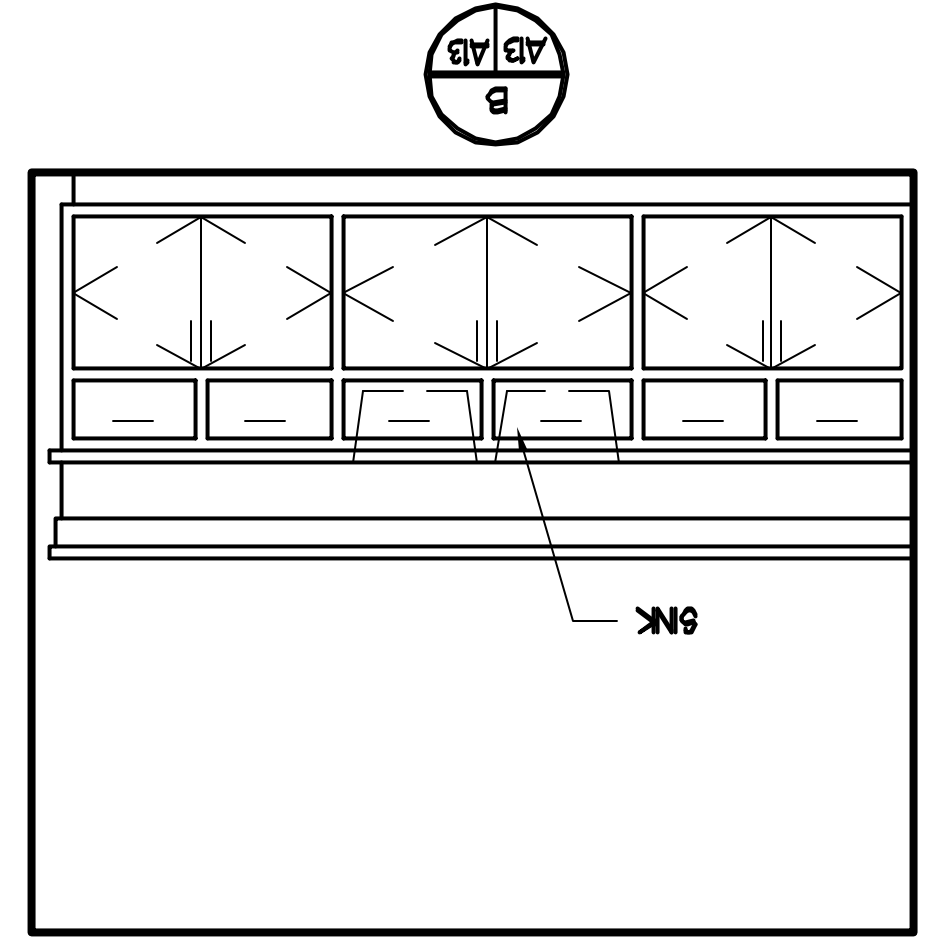
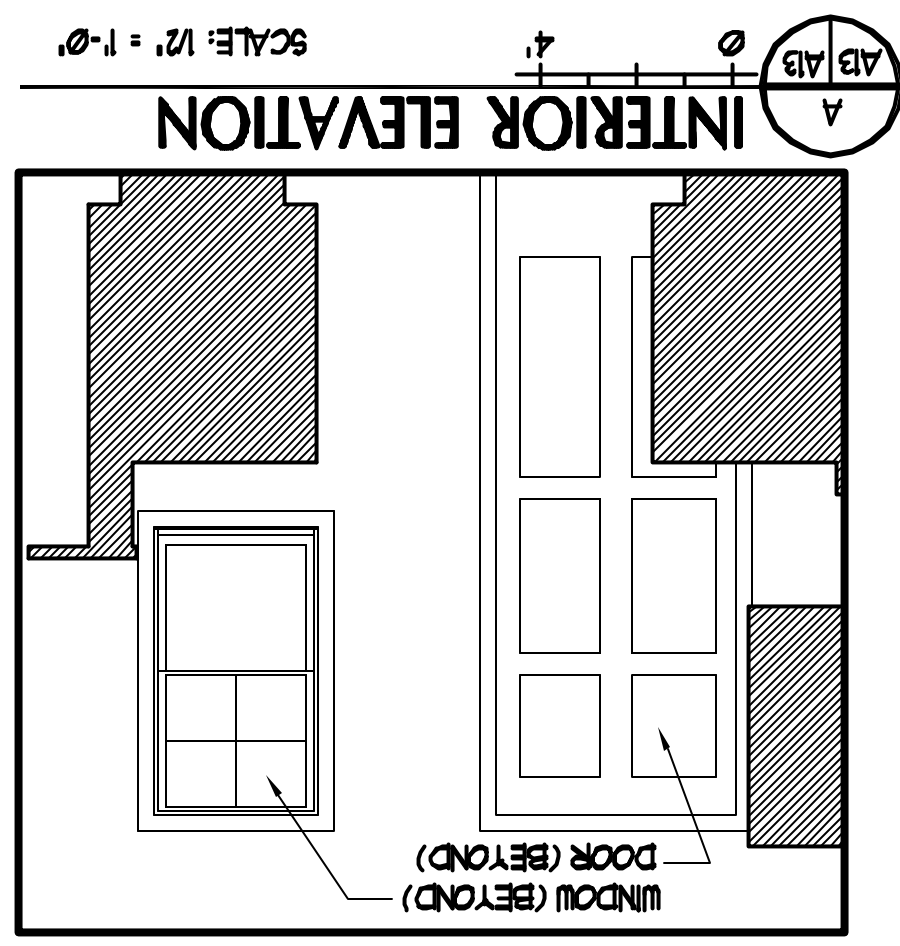
© COPYRIGHT
Reuse or reproduction
of the contents of this
document is not per-
mitted without written
permission of PORT CITY
ARCHITECTURE PA

GUILFORD COURT
157 YORK STREET
PORTLAND, ME

Job: 03126

ISSUE DATE	PRELIM	-
DD	PRELIM	-
BID	09123	-
C.D.	0504	022504
REVISION	022504	061804
PRINT	061804	
DRAWN BY	MAC	
CHECK BY	ACH	

A-13
ENLARGED
PLANS &
INT. ELEV.



NOTE:
CONTRACTOR TO FIELD VERIFY ALL DIMENSIONS
AND VERIFY DIMENSIONS WITH APPLIANCES.