

PORT CITY
ARCHITECTURE

65 NEWBURY STREET
PORTLAND, ME 04101

207.761.9000
fax: 207.761.2010

info@portcityarch.com

© COPYRIGHT
Reuse or reproduction
of the contents of this
document is not per-
mitted without written
permission of Port City
Architecture PA

GUILFORD COURT
157 YORK STREET
PORTLAND, ME

JOB: 03126

ISSUE DATE

PRELIM

BD

BID 091703

C.D.'s 010504

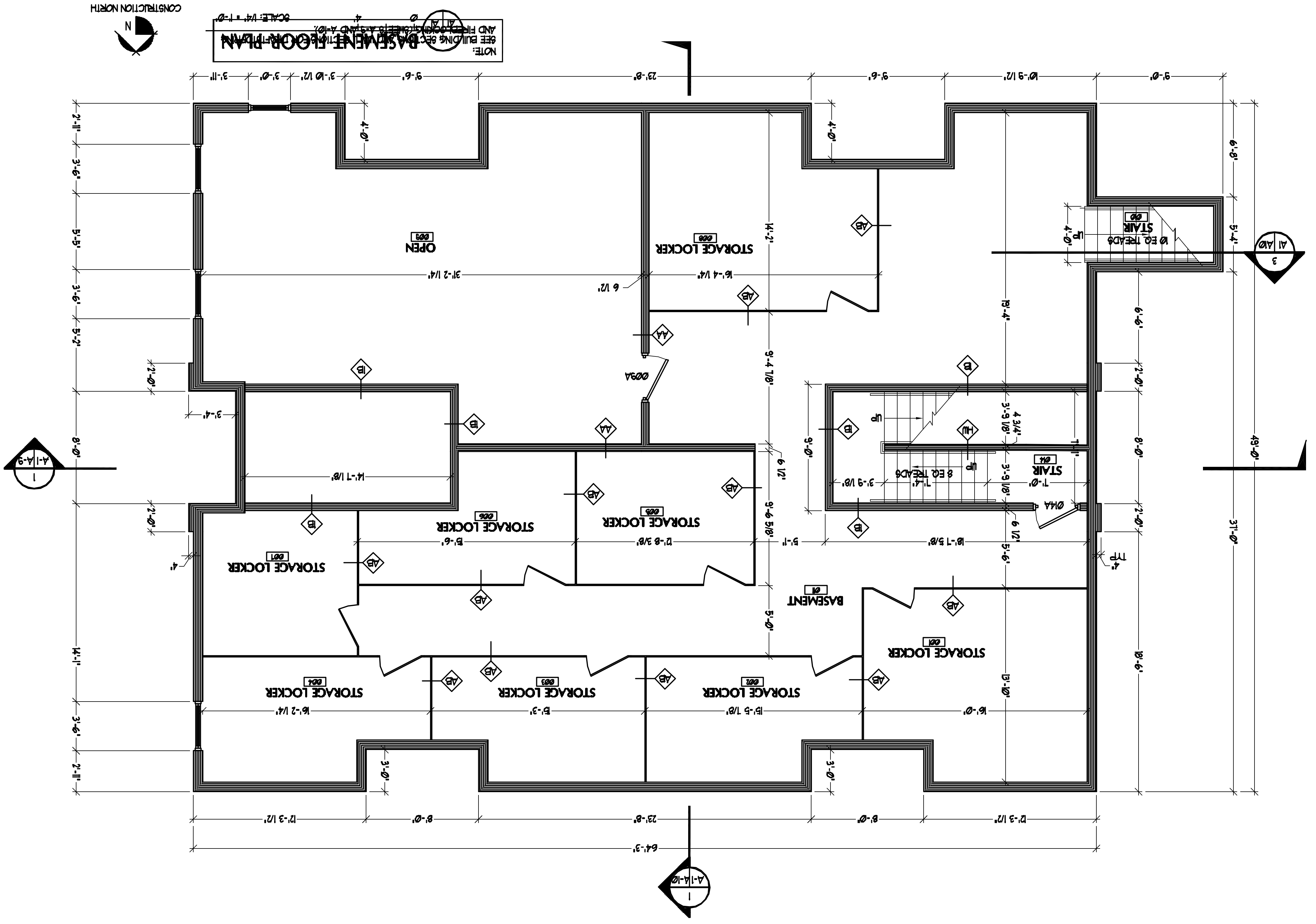
REVISION 1 082504

PRINT 061804

DRAWN BY MAC

CHECK BY ACH

BASEMENT
FLOOR
PLAN
A-1



© COPYRIGHT
Reuse or reproduction
of the contents of this
document is not per-
mitted without written
permission of Port City
Architecture PA

PORT CITY
ARCHITECTURE

65 NEWBURY STREET
PORTLAND, ME 04101

207.761.9000
fax: 207.761.2010

info@portcityarch.com

© COPYRIGHT
Reuse or reproduction
of the contents of this
document is not per-
mitted without written
permission of Port City
Architecture PA

GUILFORD COURT
157 YORK STREET
PORTLAND, ME

JOB: 03126

ISSUE DATE

PRELIM

BD

BID 091703

C.D.'s 010504

REVISION 1 082504

PRINT 061804

DRAWN BY MAC

CHECK BY ACH

BASEMENT
FLOOR
PLAN
A-1