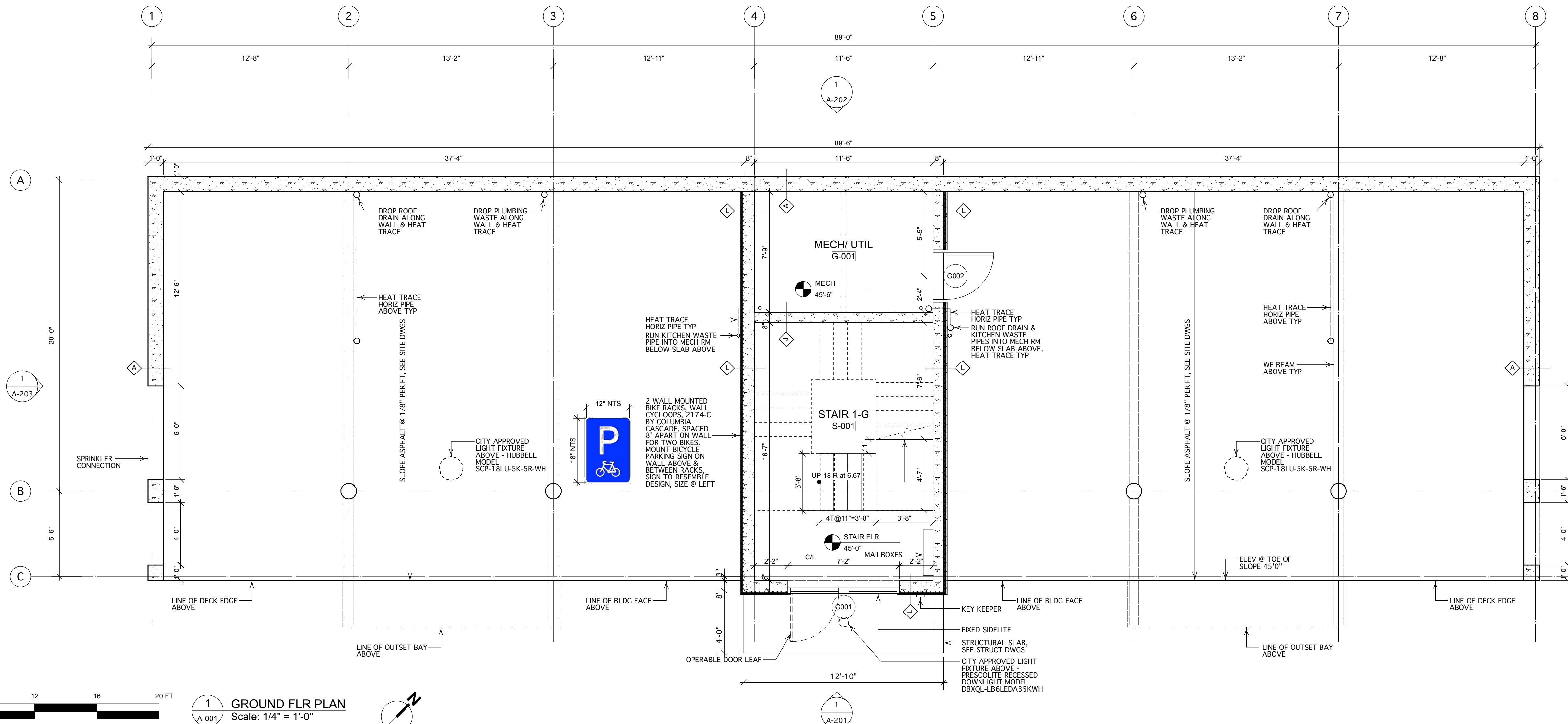


**GENERAL NOTES**

- ALL INTERIOR PARTITIONS ARE 3 1/2" WOOD STUDS UNLESS DIMENSIONED OTHERWISE.
  - WALL DIMENSIONS ON PLAN ARE TO FACE OF STUD PARTITION UNLESS NOTED OTHERWISE.
  - COORDINATE MASONRY OPENING SIZES WITH ACTUAL DOOR AND WINDOW UNITS PROVIDED FOR THIS JOB. SEE STRUCTURAL DRAWINGS FOR LINTELS.
  - ROUGH OPENING DIMENSIONS GIVEN ON DOOR AND WINDOW SCHEDULES ARE NOMINAL. THE CONTRACTOR SHALL DETERMINE ACTUAL OPENING DIMENSIONS BASED UPON DOOR AND WINDOW UNITS PROVIDED FOR THIS JOB.
  - ALL DOOR OPENINGS ARE TO BE FRAMED 4" FROM NEAREST ADJACENT WALL ON HINGE SIDE UNLESS DIMENSIONED OTHERWISE.
  - SEE DRAWING A-601 FOR DOOR SCHEDULE AND DOOR TYPES.
  - SEE DRAWING A-602 FOR WINDOW SCHEDULE AND WINDOW TYPES.
  - SEE DRAWING A-603 FOR FINISH SCHEDULE AND WALL TYPES.
  - ALL INTERIOR PARTITIONS SHALL BE FULL HEIGHT TO UNDERSIDE OF FLOOR OR ROOF FRAMING ABOVE. PROVIDE BLOCKING BETWEEN JOISTS AS REQUIRED.
  - PROVIDE STAIR UNITS IN CONFIGURATIONS SHOWN ON THE DRAWINGS AND AS DESCRIBED IN THE SPECIFICATIONS. EACH FLOOR-TO-FLOOR FLIGHT SHALL INCLUDE:
    - MC12x10.6 MINIMUM FOR STRINGER AND LANDING FRAMING.
    - HANDRAILS MOUNTED ON CMU WALLS AND GUARD RAILS AT 2'-10" ABOVE NOSINGS TO FEATURE CODE COMPLYING OVERRUNS AT TOP AND BOTTOM ENDS. HANDRAILS SHALL BE ROUND PIPE, MINIMUM DIAMETER 1 1/4" AND MAXIMUM DIAMETER 2".
    - CONTINUOUS GUARDRAILS ON OPEN SIDES WITH BOTTOM RAIL LEAVING A GAP NO MORE THAN 3 7/8" ABOVE TOP OF STRINGER, TOP RAIL AT 42" ABOVE NOSINGS, AND INNER HANDRAIL AS MENTIONED ABOVE. GUARDRAIL SHALL FEATURE 2" SQUARE TUBE TOP AND BOTTOM RAILS AND 3/4" SQUARE STEEL BAR BALUSTERS WITH CLEAR SPACE BETWEEN OF NO MORE THAN 3 7/8". GUARDRAILS SHALL BE CONTINUOUS AT ALL STAIR FLIGHTS AND LANDINGS.
    - CONCRETE FILLED METAL PAN FLAT LANDINGS AT EACH MAIN FLOOR LEVEL. LANDINGS SHALL EXTEND FULLY THROUGH CMU WALL OPENINGS AT UNIT DOORS, DOOR THRESHOLD SHALL COVER JOINT BETWEEN LANDING AND UNIT FLOOR.
    - AUXILIARY STEPS AND LANDINGS WITH HANDRAILS AND GUARDRAILS AT EAST SIDE SECOND AND THIRD FLOOR UNITS AS SHOWN IN DRAWINGS.
- FABRICATION AND ERECTION OF STAIR UNITS MAY BE ACHIEVED WITH FASTENERS EMBEDDED IN REINFORCED CMU BUT NO FASTENERS MAY FULLY PENETRATE CMU. CONTRACTOR SHALL COORDINATE LOCATIONS OF FULLY GROUTED AND REINFORCED CMU CELLS WITH FASTENER LOCATIONS.



1  
A-001  
**GROUND FLR PLAN**  
Scale: 1/4" = 1'-0"

Appr							
Zone							
Revision Notes							
Date	7/29/14						
No.	1						
Issue Notes							
Issue Set							
Date	4/3/14						
No.	1						
Date	7/28/13						
No.	2						
Date	4/3/14						
No.	1						
Date	7/28/13						
No.	1						
Date	4/3/14						
Revision							
Project ID	2013005						
Drawn By							
Checked By							
Designed By	reh						
Project Name	133 York St						
Project Date	7/28/13						
Project Manager	reh						
Design Firm	HKTA/architects 482 Congress Street Suite 502 Portland, Maine 04101						
Consultant	Pinkham & Greer Consulting Engineers 28 Van Ness Avenue Portland, Maine 04103						
Project Title	Residential Housing Project 133 York Street Portland, Maine						
Drawing Title	Floor Plan-Ground Floor						
Scale	Sheet Scale						
Drawing No.	A-001						
of	31						

NOT FOR CONSTRUCTION

HKTA / architects  
482 Congress Street Suite 502  
Portland, Maine 04101  
phone: 207. 774. 6016  
fax: 207. 774. 9128  
email: hkta@maine.rr.com