

1 2 3 4 5 6 7

A

B

C

D

E

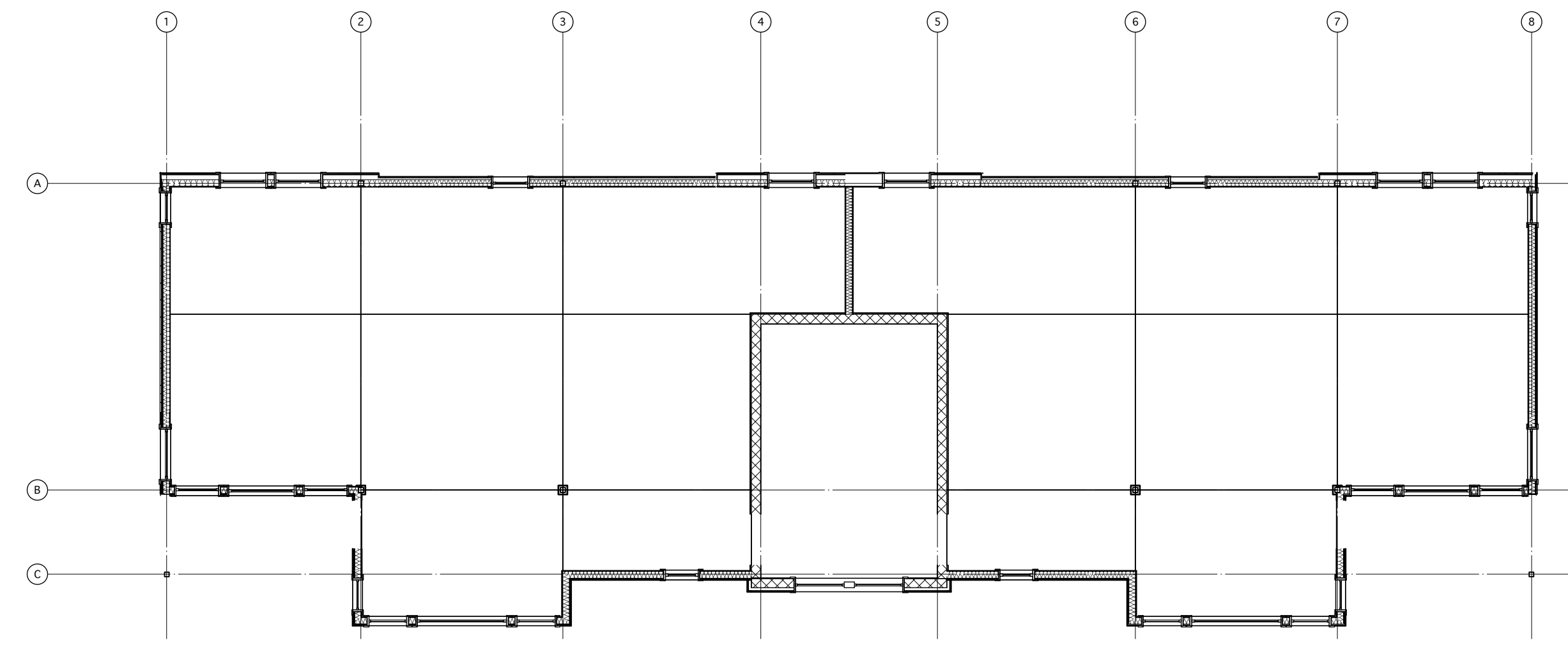
A

B

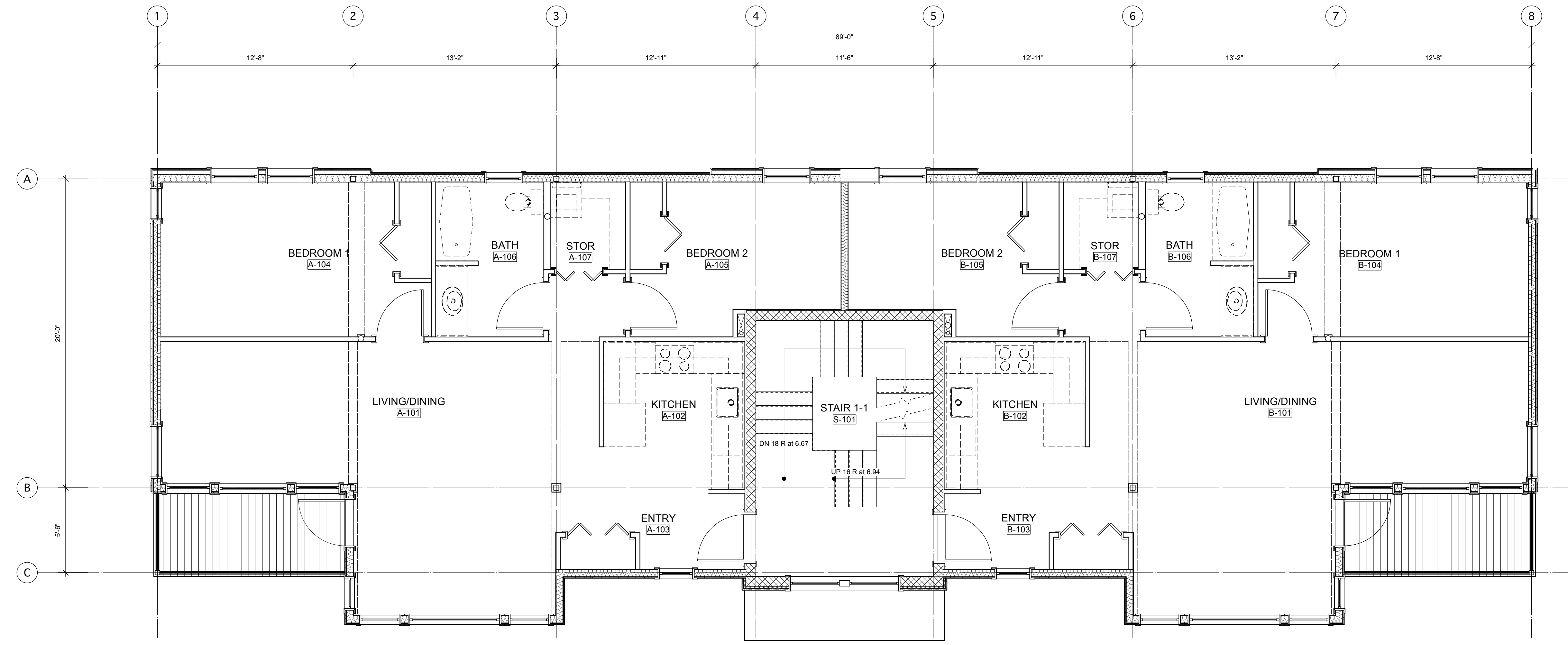
C

D

E



2 FIRST FLOOR SLAB PLAN
Scale: 1/8" = 1'-0"



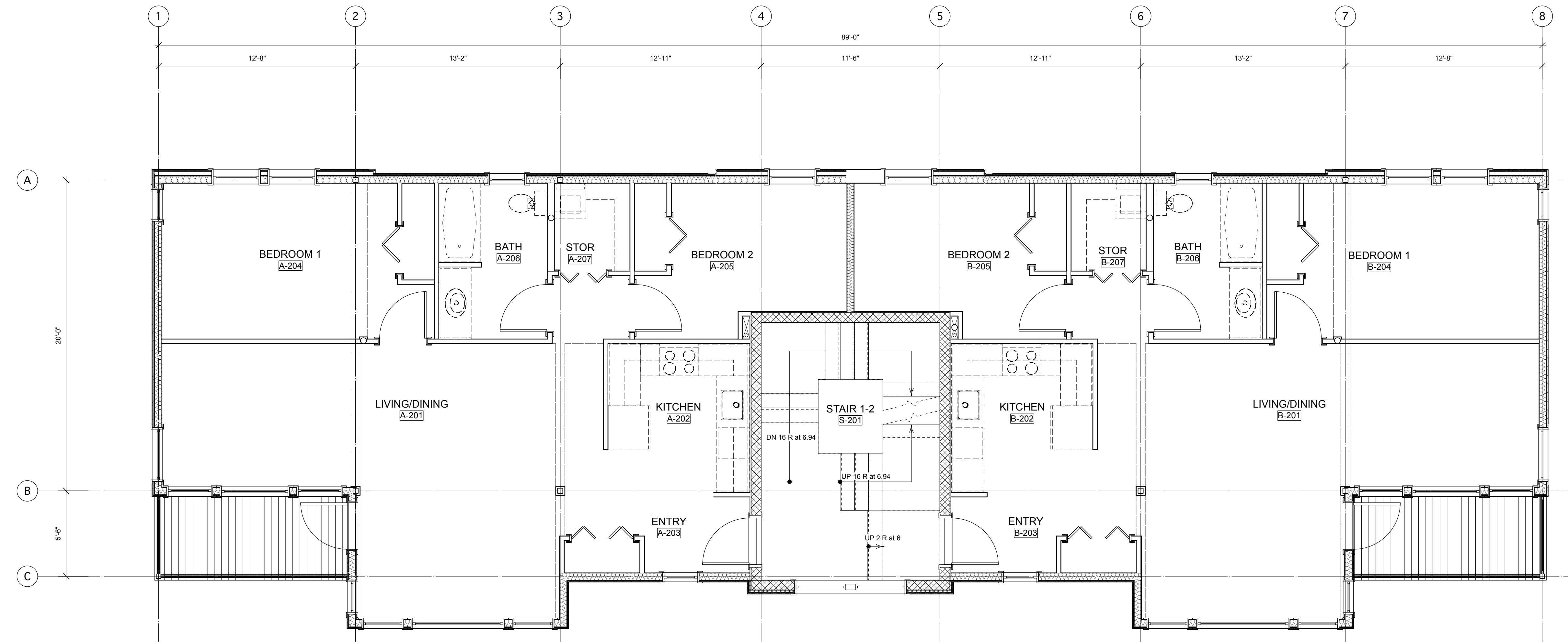
Appr	
Zone	
Revision Notes	
Date	
No.	
Issue Set	
Issue Notes	
Date	7/26/13
No.	1
Date	
No.	
Date	7/26/13
Revision	Revision
Project ID	2013005
Drawing Code	
CDP File Name	133 York.vwx
Plot Date	
Designed By	reh
Drawn By	
Checked By	
Reviewed By	
Submitted By	
Project Manager	reh
Design Firm	HKTA/architects 482 Congress Street Suite 502 Portland, Maine 04101
Consultant	Pinkham & Greer Consulting Engineers 28 Vannah Avenue Portland, Maine 04103
Project Title	Residential Housing Project 133 York Street Portland, Maine
Drawing Title	Floor Plan-1 Slab Plan-1
Scale	Sheet Scale
Drawing No.	A-101
	of
	30

1 2 3 4 5 6 7

FOR PLANNING BOARD REVIEW

HKTA / architects
482 Congress Street Suite 502
Portland, Maine 04101
phone: 207. 774. 6016
fax: 207. 774. 9128
email: hktain@maine.rr.com

© HKTA / architects 2013

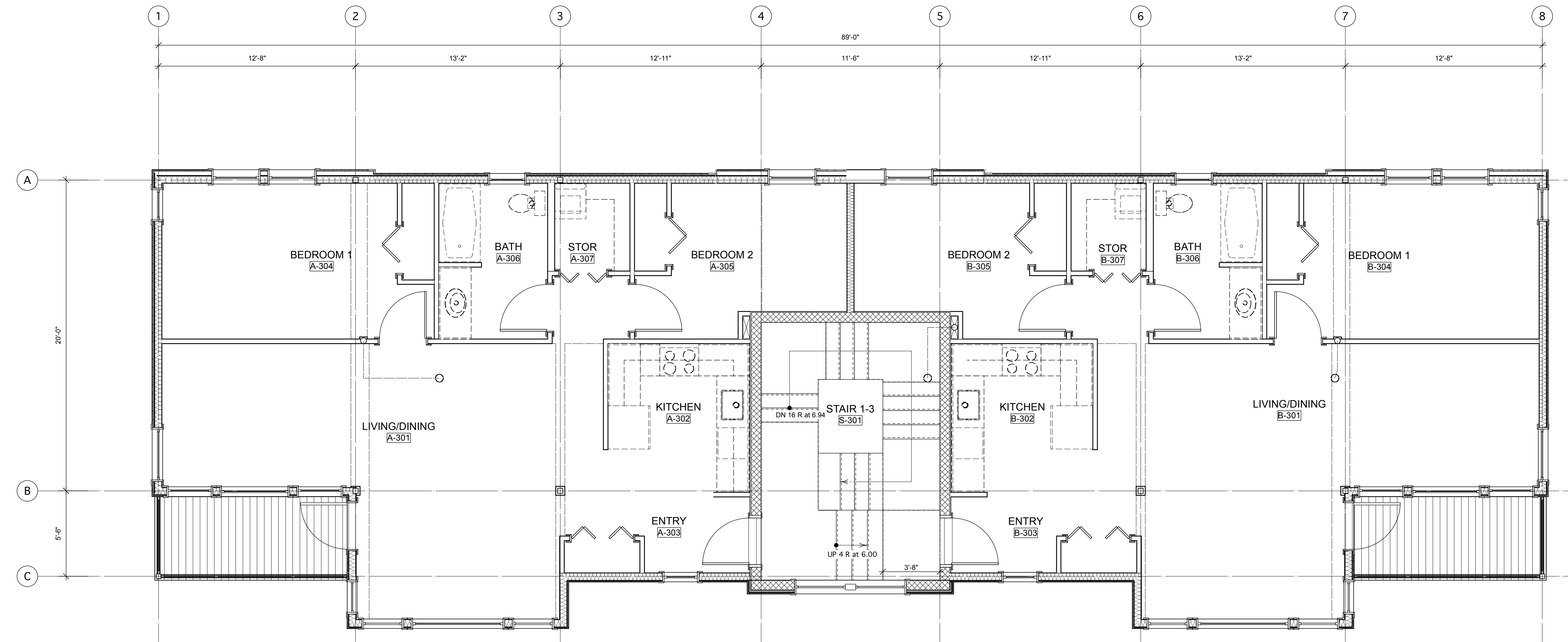


1 SECOND FLOOR PLAN
A-102 Scale: 1/4" = 1'-0"

HKTA / architects
482 Congress Street Suite 502
Portland, Maine 04101
phone: 207. 774. 6016
fax: 207. 774. 9128
email: hkta@maine.rr.com

FOR PLANNING BOARD REVIEW

Project Title		Residential Housing Project 133 York Street Portland, Maine	
Design Firm		HKTA/architects 482 Congress Street Suite 502 Portland, Maine 04101	
Consultant		Pinkham & Greer Consulting Engineers 28 Vannah Avenue Portland, Maine 04103	
Drawing Title		Floor Plan-2	
Scale		Sheet Scale	
Drawing No.		A-102	
Date		7/26/13	
Revision		Revision	
Project ID		2013005	
Drawing Code		-	
CAD File Name		133 York_VWK	
Plot Date		-	
Project Manager		rth	
Designed By		rth	
Drawn By		rth	
Checked By		rth	
Reviewed By		rth	
Issue Set		Issue Set	
Date		Date	
No.		No.	
Revision Notes		Revision Notes	
Zone		Zone	
Appr		Appr	



1 THIRD FLOOR PLAN
A-103
Scale: 1/4" = 1'-0"

Project Title	Residential Housing Project 133 York Street Portland, Maine	Design Firm	HKTA/architects 482 Congress Street Suite 502 Portland, Maine 04101	Designed By	reh	Date	7/26/13
Drawing Title	Floor Plan-3	Consultant	Pinkham & Greer Consulting Engineers 28 Hannah Avenue Portland, Maine 04103	Checked By		Revision	
Scale	Sheet Scale	Project ID		Reviewed By		Project ID	2013005
Drawing No.	A-103	Drawing Code		Submitted By		Issue Set	
	of	Issue No.		Project Manager	reh	Date	7/26/13
	30	No.				Issue Notes	
		Date					
		Zone					
		Appr					

FOR PLANNING BOARD REVIEW

HKTA / architects
482 Congress Street Suite 502
Portland, Maine 04101
phone: 207. 774. 6016
fax: 207. 774. 9128
email: hkta@maine.rr.com

1 2 3 4 5 6 7

1 2 3 4 5 6 7

A

B

C

D

E

A

B

C

D

E

1 2 3 4 5 6 7

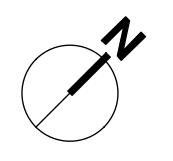
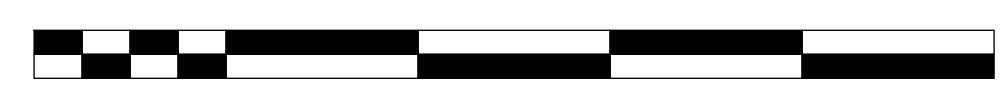
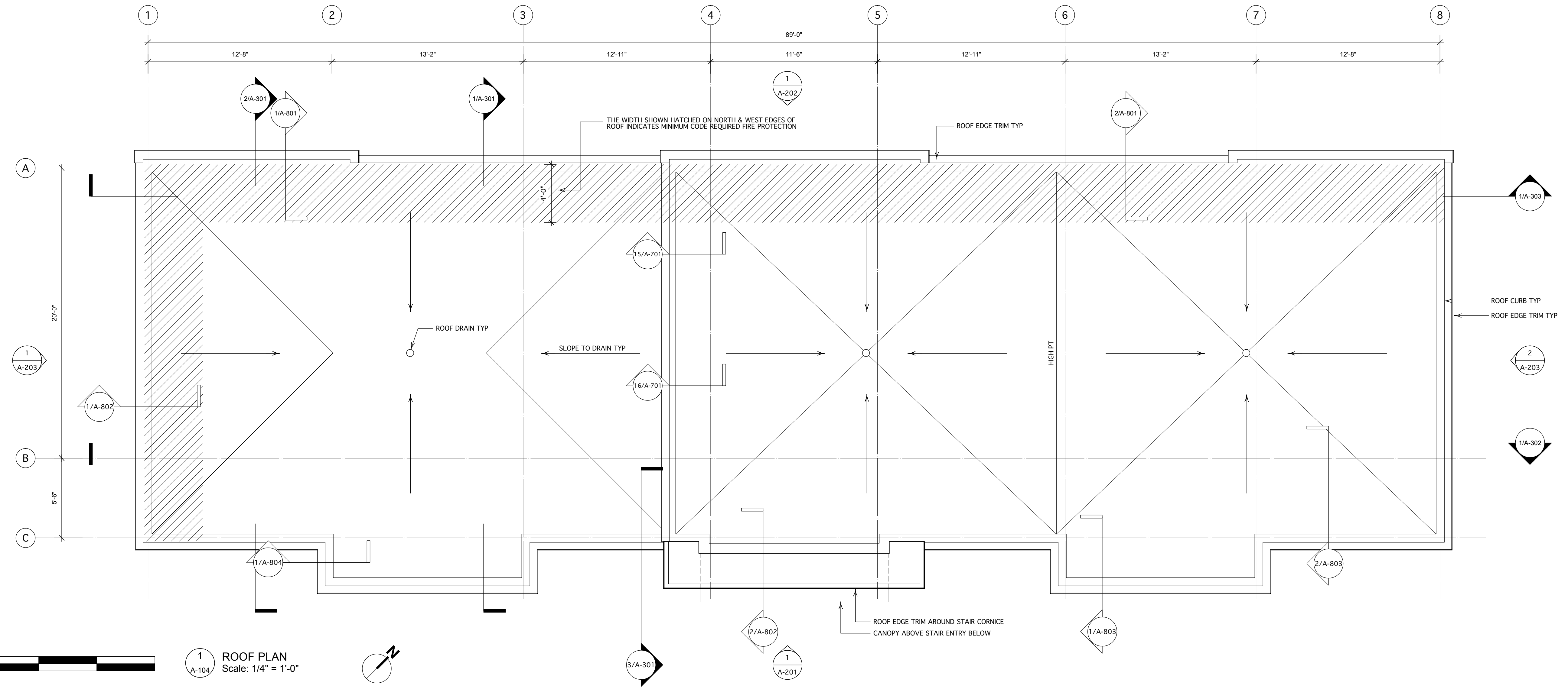
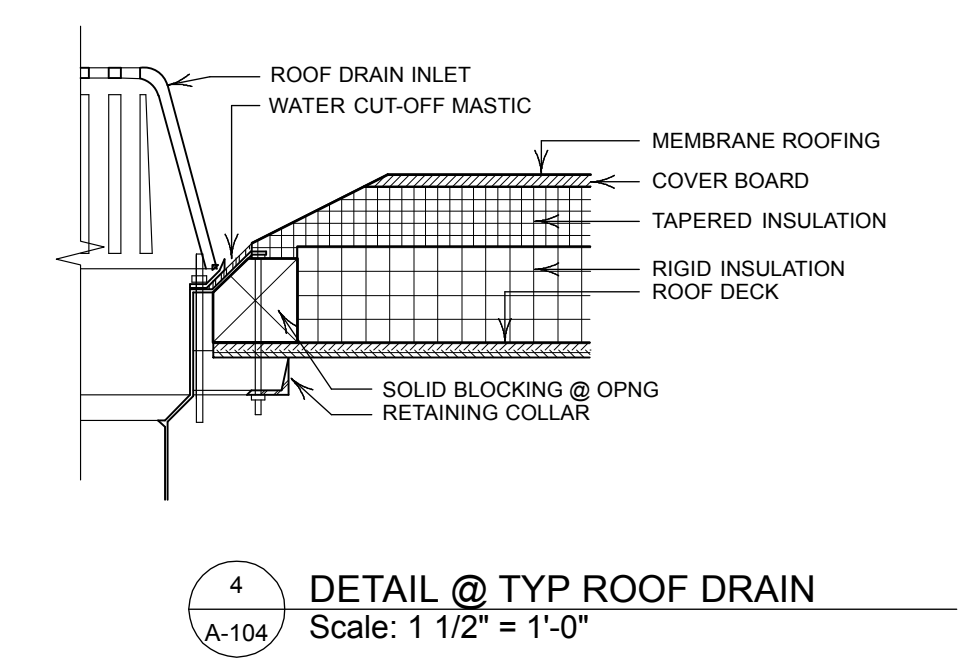
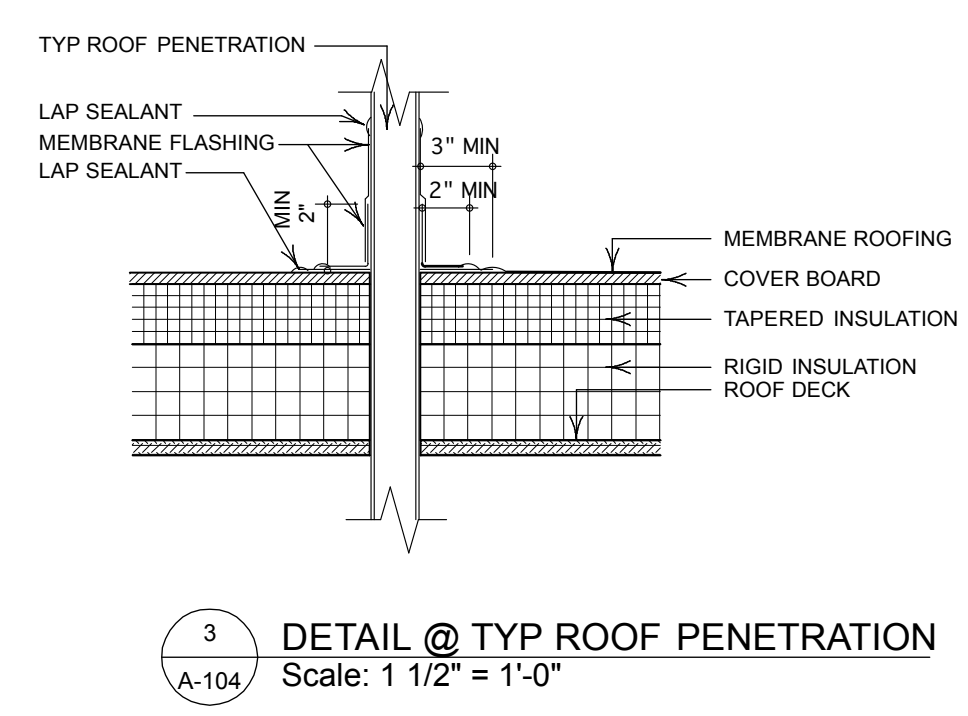
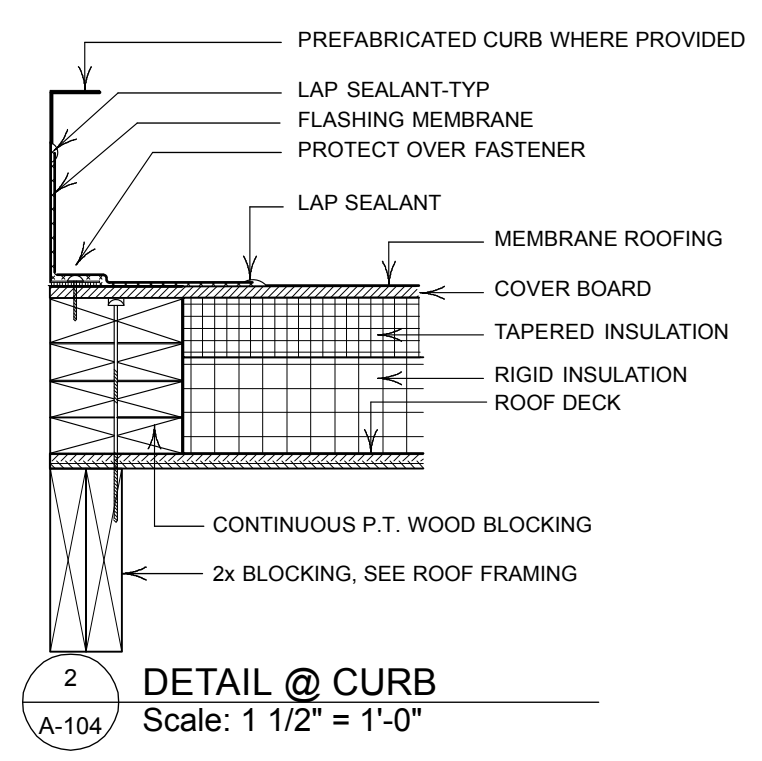
A

B

C

D

E



Project Title	Residential Housing Project 133 York Street Portland, Maine	Design Firm	HKTA/architects 482 Congress Street Suite 502 Portland, Maine 04101	Date	7/26/13
Drawing Title	Roof Plan Roof Details	Consultant	Pinkham & Greer Consulting Engineers 28 Vannah Avenue Portland, Maine 04103	Revision	2013005
Scale	Sheet Scale	Designed By	reh	Project ID	2013005
Author	A-104	Drawn By	reh	Drawing Code	
Checker		Checked By		Arch File Name	133 York_VWX
Reviser		Reviewed By		Plot Date	
Issue Note		Submitted By	reh	Project Manager	
Date	7/22/13				
No.	B				
Zone	A				
Appr					

FOR PLANNING BOARD REVIEW

HKTA / architects
482 Congress Street Suite 502
Portland, Maine 04101
phone: 207. 774. 6016
fax: 207. 774. 9128
email: hktain@maine.rr.com

Scale: Sheet Scale
Drawing No.: **A-104**
of 30

1 2 3 4 5 6 7