

1 2 3 4 5 6 7

A

B

C

D

E

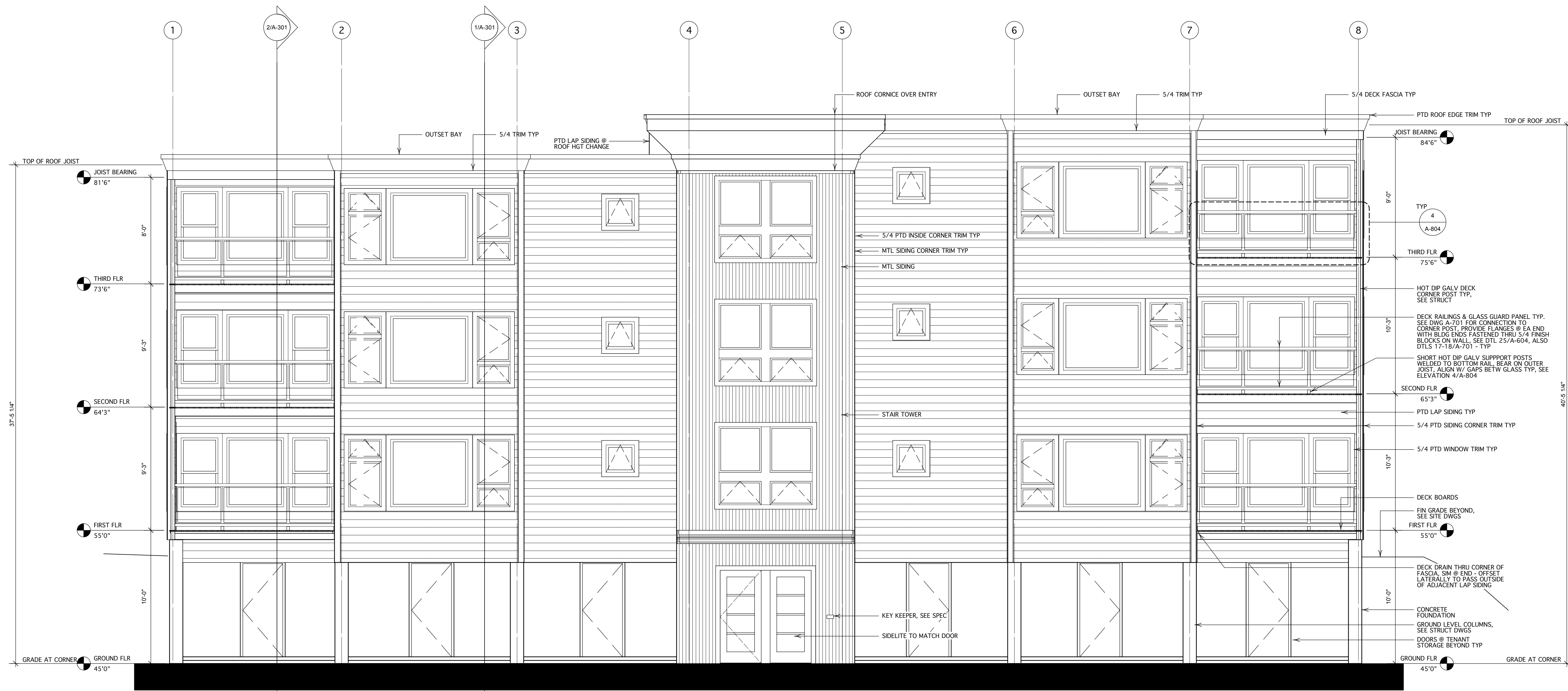
A

B

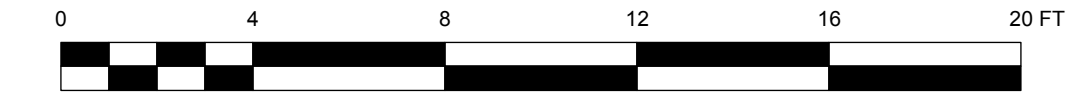
C

D

E



1 SOUTH ELEVATION
SCALE: 1/4"=1'-0"



NOT FOR CONSTRUCTION

HKTA / architects
482 Congress Street Suite 502
Portland, Maine 04101
phone: 207. 774. 6016
fax: 207. 774. 9128
email: hkta@maine.rr.com

Project Title	Residential Housing Project	Project No.	A-201
Design Firm	HKTA/architects 482 Congress Street Suite 502 Portland, Maine 04101	Revision	2013005
Contractor	Pinkham & Greer Consulting Engineers 28 Vanah Avenue Portland, Maine 04103	Issue Note	
Scale	Sheet Scale	Date	7/22/13
Author	reh	No.	B
Checked By	reh	Date	
Reviewed By		Issue Notes	
Subscribed By		Date	
Project Manager		No.	
Design Code	133 yorl.vwk	Date	
Project Date		Zone	
		Appr	



1 SOUTH ELEVATION
A-201 SCALE: 1/4"=1'-0"

FOR PLANNING BOARD REVIEW

HKTA / architects
482 Congress Street Suite 502
Portland, Maine 04101
phone: 207. 774. 6016
fax: 207. 774. 9128
email: hkta@maine.rr.com

Project Title		Residential Housing Project 133 York Street Portland, Maine	
Design Firm		HKTA/architects 482 Congress Street Suite 502 Portland, Maine 04101	
Consultant		Pinkham & Greer Consulting Engineers 28 Vannah Avenue Portland, Maine 04103	
Drawing Title		Elevations-1 South	
Scale Sheet Scale			
Drawing No. A-201			
of 30			
No.		B	
Date		7/22/13	
Issue Note			
No.			
Date			
Revision Notes			
Zone			
Appr			

1

2

3

4

5

6

7

A

B

C

D

E

A

B

C

D

E

1

2

3

4

5

6

7



1 NORTH ELEVATION
A-202 SCALE: 1/4"=1'-0"

FOR PLANNING BOARD REVIEW

HKTA / architects
482 Congress Street Suite 502
Portland, Maine 04101
phone: 207.774.6016
fax: 207.774.9128
email: hkta@maine.rr.com

Project Title Residential Housing Project 133 York Street Portland, Maine		Design Firm HKTA/architects 482 Congress Street Suite 502 Portland, Maine 04101		Designed By reh		Date 7/26/13	
Drawing Title Elevations-2 North		Consultant Pinkham & Greer Consulting Engineers 28 Vannah Avenue Portland, Maine 04103		Checked By reh		Revision 2013005	
Scale Sheet Scale		Reviewed By reh		Project ID 2013005		Issue Note	
Drawing No. A-202		Submitted By reh		Drawing Code -		Date 7/22/13	
of 30		Project Manager reh		Date 7/22/13		No.	
				No.		Revision Notes	
				No.		Date	
				No.		Zone	
				No.		Appr	

1 2 3 4 5 6 7

A
B
C
D
E



2 WEST ELEVATION
SCALE: 1/4"=1'-0"



1 EAST ELEVATION
SCALE: 1/4"=1'-0"

1 2 3 4 5 6 7

FOR PLANNING BOARD REVIEW

HKTA / architects
482 Congress Street Suite 502
Portland, Maine 04101
phone: 207. 774. 6016
fax: 207. 774. 9128
email: hkta@maine.rr.com

Project Title Residential Housing Project 133 York Street Portland, Maine		Design Firm HKTA/architects 482 Congress Street Suite 502 Portland, Maine 04101		Date 7/26/13	
Drawing Title Elevations-3 East & West		Consultant Pinkham & Greer Consulting Engineers 28 Vannah Avenue Portland, Maine 04103		Revision 2013005	
Scale Sheet Scale		Designed By reh		Issue Note	
Drawing No. A-203		Checked By		No.	
of 30		Reviewed By		Date	
		Submitted By		Revision Notes	
		Project Manager		No.	
		Project Name 133 York, VVX		Date	
		Project Date		Zone	
				Appr	

© HKTA / architects 2013