

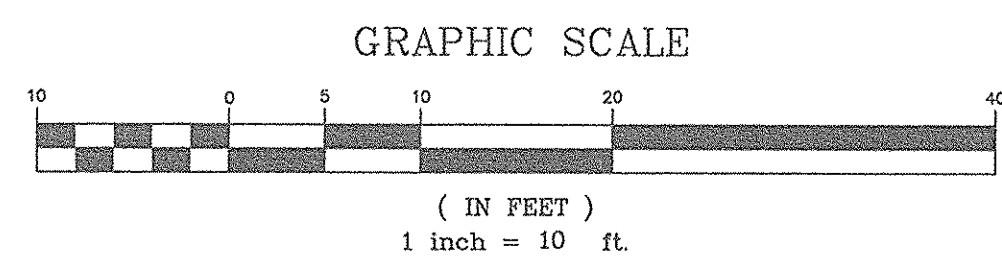
SUGGESTED SEQUENCE OF CONSTRUCTION TO CONTROL EROSION:

- THIS SEQUENCE OF CONSTRUCTION IS A GENERAL GUIDE TO THE CONTRACTOR. ACTUAL CONSTRUCTION PRACTICES WILL DICTATE VARIATIONS IN THE ORDER OF MAJOR EVENTS.
1. INSTALL ALL PERIMETER SILT FENCE.
 2. INSTALL SILTATION BASINS. (PRIOR TO ANY STRIPPING OF TOPSOIL OR OTHER EARTHWORK)
 3. CLEAR AND GRUB WORK AREAS. TEMPORARILY SEED AREAS NOT TO BE WORKED ON WITHIN 14 DAYS.
 4. STRIP AND STOCKPILE ON-SITE TOPSOIL. SEED STOCKPILES WITH TEMPORARY SEED MIX.
 5. BEGIN EARTHWORK FOR PARKING AND BUILDING FOUNDATION.
 6. STABILIZE AREAS DRAINING TO UNDERDRAINED SOIL FILTER.
 7. CONSTRUCT UNDERDRAINED SOIL FILTER AND STORM DRAIN SYSTEM.
 8. INSTALL AND PROTECT STORM DRAINAGE SYSTEM.
 9. BEGIN BUILDING CONSTRUCTION.
 10. ROUGH GRADE PARKING AREAS, AND ROADWAY SIDE SLOPES.
 11. FINE GRADE ALL PARKING LOTS AND DRIVEWAY SIDE SLOPES AND ROUGH GRADE REMAINDER OF SITE.
 12. RESEED OR TEMPORARILY SEED ANY AREA WHICH WILL BE LEFT UNDISTURBED FOR MORE THAN 14 DAYS.
 13. COMPLETE FINE GRADING AND PAVING OF SIDEWALKS AND PARKING AREAS.
 14. CLEAN UNDERDRAINED SOIL FILTER AND STORM DRAIN SYSTEM OF CONSTRUCTION SEDIMENTATION.
 15. FINE GRADE, LOAM, SEED AND FERTILIZE REMAINDER OF SITE.
 16. REMOVE TEMPORARY SOIL EROSION MEASURES.

EROSION CONTROL LEGEND

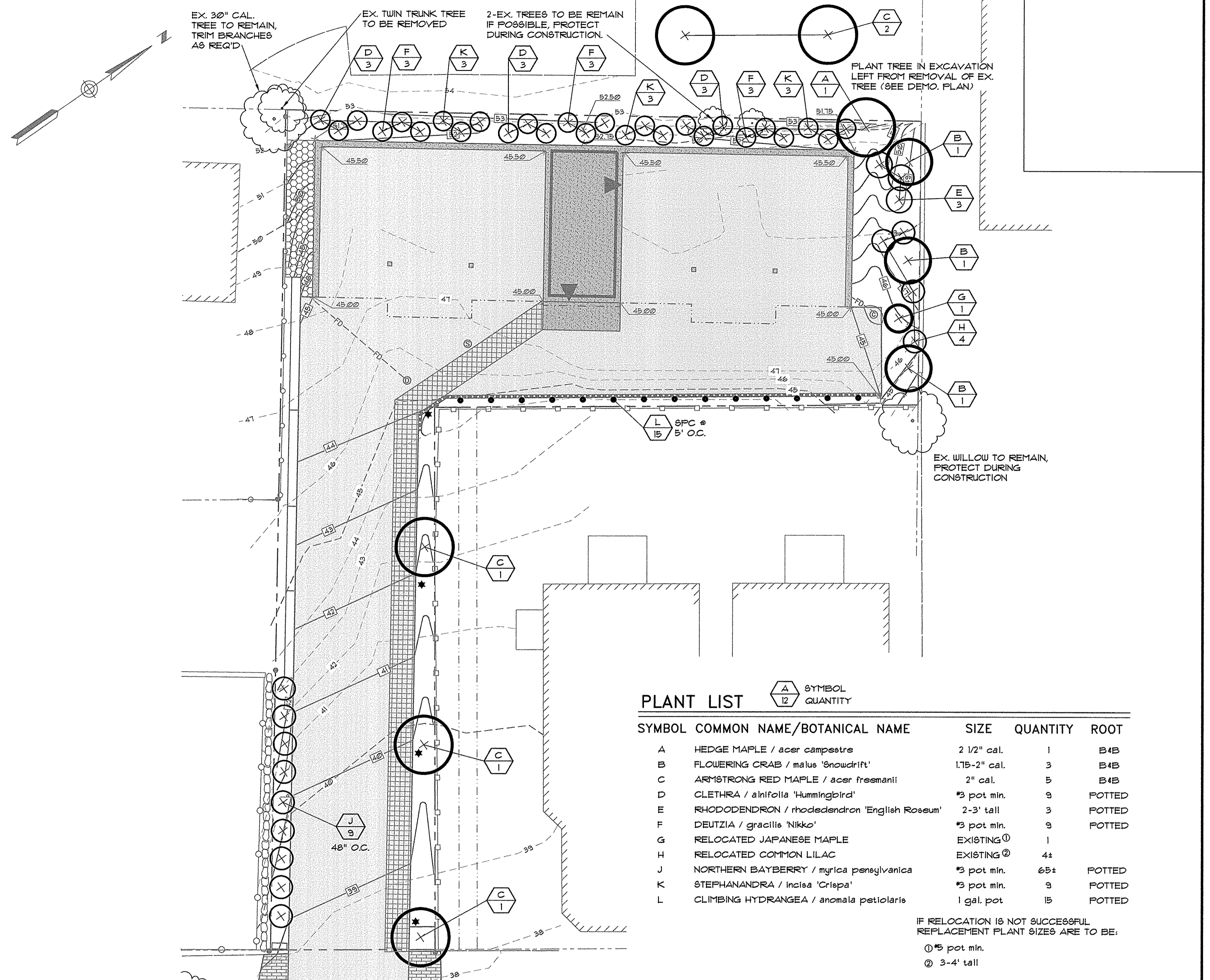
- (□) CATCH BASIN PROTECTION WITH SILTSACK OR HAYBALES
- SILT FENCE
- [X] EROSION CONTROL MESH
- [Hatched] STABILIZED ENTRANCE

EROSION CONTROL PLAN



LANDSCAPE NOTES

1. SAVE EXISTING TREES AS SHOWN. DO NOT CUT OR CLEAR ANY VEGETATION BEYOND THE IMPACT LIMIT LINE. THE PROJECT PROPOSES TO SAVE OR MINIMALLY EFFECT THE CONDITION OF TWO SHADE TREES CLOSE TO THE PROJECT PROPERTY LINE ON PRIVATE PROPERTY. FROM SITE INSPECTION SOME ROOT ZONE IMPACT IS EXPECTED AND HOPEFULLY CAN BE MINIMIZED WITH GOOD TREE PROTECTION PRACTICES. THIS WOULD INCLUDE FOLLOWING STEPS IN THE ISA TREES & CONSTRUCTION RECOMMENDATIONS: PHYSICAL TRUNK PROTECTION AND CONSTRUCTION FENCE, NO STORAGE OF MATERIALS OR EQUIPMENT IN THE ROOT ZONE AREA. INSPECTION OF TRENCHING WHEN ROOTS ARE EXPOSED, CUTTING DAMAGED ROOTS CLEANLY WITH SAW VS LEAVING THEM DAMAGE BY EARTH EQUIPMENT. IF TREES CAN NOT SAVED OR DAMAGED, REPLACEMENT TREES SHALL BE INSTALLED. THIS WOULD FOLLOW SITE SPECIFICATION STANDARDS.
2. ALL PLANT MATERIALS INSTALLED ARE TO MEET THE SPECIFICATIONS OF THE "AMERICAN STANDARDS FOR NURSERY STOCK" BY THE AMERICAN ASSOCIATION OF NURSERYMEN.
3. ALL PROPOSED PLANT LOCATIONS SHALL BE AS SHOWN ON PLANS. CONTRACTOR SHALL VERIFY LOCATION OF ALL UTILITIES PRIOR TO PLANTING AND WILL NOTIFY OWNER'S REPRESENTATIVE IN THE EVENT OF CONFLICTS.
4. PLANT LOCATIONS ARE TO BE SCALED FROM THE LANDSCAPE PLAN UNLESS NOTED OTHERWISE.
5. NO PLANT MATERIAL SHALL BE INSTALLED UNTIL FINAL GRADING AND CONSTRUCTION HAS BEEN COMPLETED IN THE IMMEDIATE AREA.
6. FINAL QUANTITY FOR EACH PLANT TYPE IS NOTED IN THE PLANT LIST. THIS NUMBER SHALL TAKE PRECEDENCE IN THE CASE OF ANY DISCREPANCY BETWEEN QUANTITIES SHOWN IN THE LIST AND ON THE PLAN.
7. ANY PROPOSED SUBSTITUTIONS MUST BE APPROVED BY THE OWNER OR THE OWNER'S REPRESENTATIVE.
8. ALL DISTURBED AREAS TO BE LOAMED AND SEEDED.



PLANT LIST

SYMBOL QUANTITY

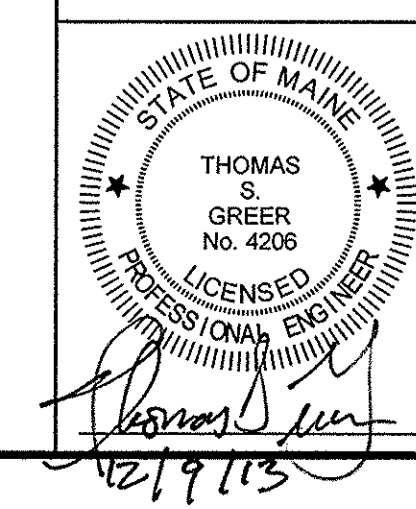
SYMBOL	COMMON NAME/BOTANICAL NAME	SIZE	QUANTITY	ROOT
A	HEDGE MAPLE / acer campestre	2 1/2" cal.	1	B4B
B	FLOWERING CRAB / malus 'snowdrift'	1 1/2-2" cal.	3	B4B
C	ARMSTRONG RED MAPLE / acer freemanii	2" cal.	5	B4B
D	CLETHRA / alnifolia 'hummingbird'	#3 pot min.	9	FOTTED
E	RHODODENDRON / rhododendron 'English Roseum'	2-3' tall	3	FOTTED
F	DEUTZIA / gracilis 'Nikko'	#3 pot min.	9	FOTTED
G	RELOCATED JAPANESE MAPLE	EXISTING ①	1	
H	RELOCATED COMMON LILAC	EXISTING ②	4±	
J	NORTHERN BAYBERRY / myrica pennsylvanica	#3 pot min.	65±	FOTTED
K	STEPHANANDRA / incisa 'Crispa'	#3 pot min.	9	FOTTED
L	CLIMBING HYDRANGEA / anomala petiolaris	1 gal. pot	15	FOTTED

IF RELOCATION IS NOT SUCCESSFUL
REPLACEMENT PLANT SIZES ARE TO BE:

- ① #5 pot min.
- ② 3-4' tall

LANDSCAPE PLAN

REV.	DATE	DESCRIPTION
5	12/9/13	REV'D PER CONDITIONS OF APPROVAL & STAFF COMMENTS
4	10/21/13	REV'D PER CITY REVIEW
3	10/1/13	SUBMITTED FOR FINAL APPROVAL
2	9/3/13	REV'D PER STAFF REVIEW COMMENTS
1	8/21/13	EX. TREE TO REMAIN PER CITY REVIEW



133 YORK, LLC
110 MARGINAL WAY, SUITE 292
PORTLAND, MAINE

133 YORK STREET
YORK STREET, PORTLAND MAINE

EROSION CONTROL AND LANDSCAPE PLAN

SCALE: AS SHOWN	DRN BY: JDC
DATE: JULY 24, 2013	DESG BY: TSG
PROJECT: 13105	CHK BY: TSG

C1.4