

1 2 3 4 5 6 7

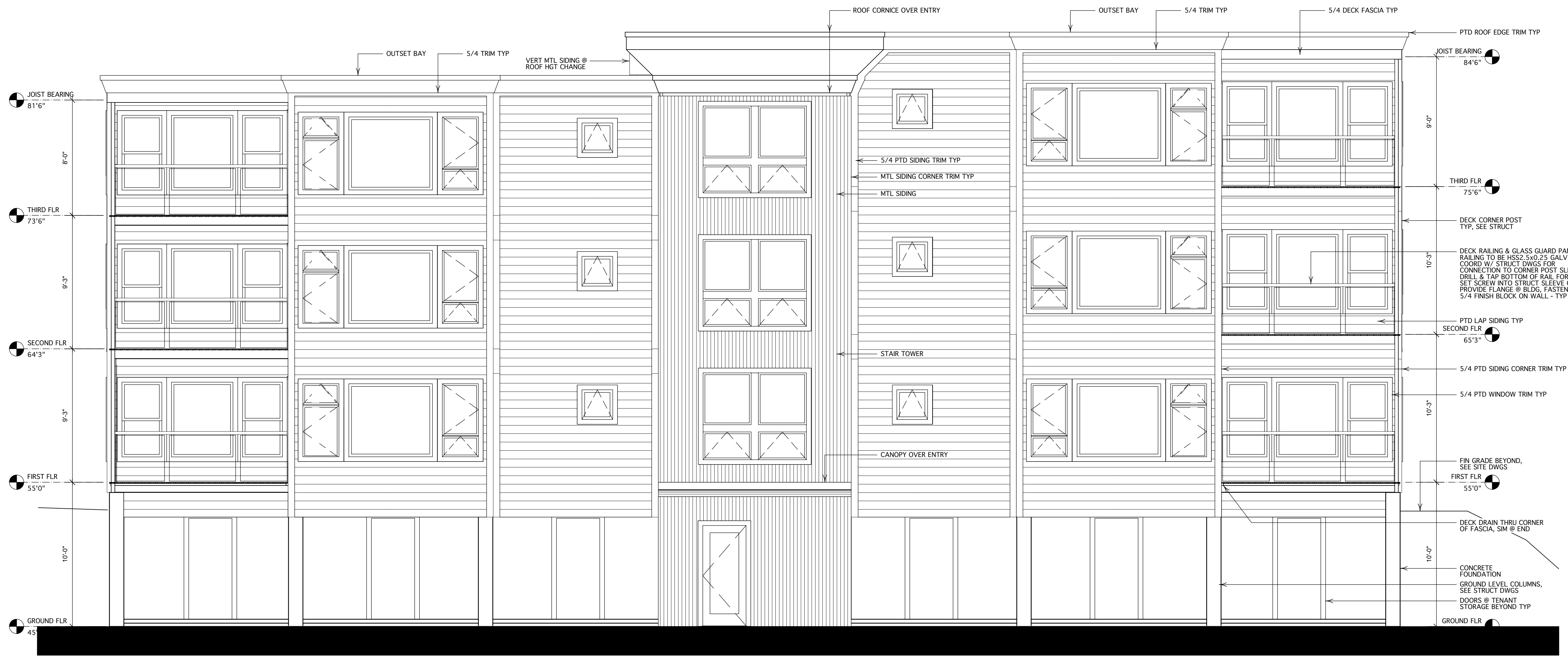
A

B

C

D

E



JOIST BEARING
81'6"

THIRD FLR
73'6"

SECOND FLR
64'3"

FIRST FLR
55'0"

GROUND FLR
45'

PTD ROOF EDGE TRIM TYP

JOIST BEARING
84'6"

THIRD FLR
75'6"

DECK CORNER POST
TYP, SEE STRUCT

DECK RAILING & GLASS GUARD PANEL TYP
RAILING TO BE HSS2.5x0.25 GALV TUBE,
COORD W/ STRUCT DWGS FOR
CONNECTION TO CORNER POST SLEEVE,
DRILL & TAP BOTTOM OF RAIL FOR S.S,
SET SCREW INTO STRUCT SLEEVE ON COL,
PROVIDE FLANGE @ BLDG, FASTEN TO
5/4 FINISH BLOCK ON WALL - TYP

PTD LAP SIDING TYP
SECOND FLR
65'3"

5/4 PTD SIDING CORNER TRIM TYP

5/4 PTD WINDOW TRIM TYP

FIN GRADE BEYOND,
SEE SITE DWGS

FIRST FLR
55'0"

DECK DRAIN THRU CORNER
OF FASCIA, SIM @ END

CONCRETE
FOUNDATION
GROUND LEVEL COLUMNS,
SEE STRUCT DWGS

DOORS @ TENANT
STORAGE BEYOND TYP

GROUND FLR

1 SOUTH ELEVATION
A-201 SCALE: 1/4"=1'-0"

NOT FOR CONSTRUCTION

Date: 6/27/13
File name: York St model 2.vwx

HKTA / architects
482 Congress Street Suite 502
Portland, Maine 04101
phone: 207. 774. 6016
fax: 207. 774. 9128
email: hkta@maine.rr.com

Residential Townhouse Project
133 York Street
Portland, Maine

HKTA/architects
482 Congress Street
Suite 502
Portland, Maine 04101

Pinkham & Greer Consulting Engineers
28 Vannah Avenue
Portland, Maine 04103

Designed By	reh
Drawn By	reh
Checked By	
Reviewed By	
Submitted By	
Project Manager	reh

Date	00/00/00
Revision	
Project ID	2013005
Drawing Code	
CAD File Name	133_york_vwx
Plot Date	00/00/00

No.	Date	Issue Notes	No.	Date	Revision Notes	Zone	Appr

1 2 3 4 5 6 7

A-201
of
No. Sheets

© HKTA / architects 2013