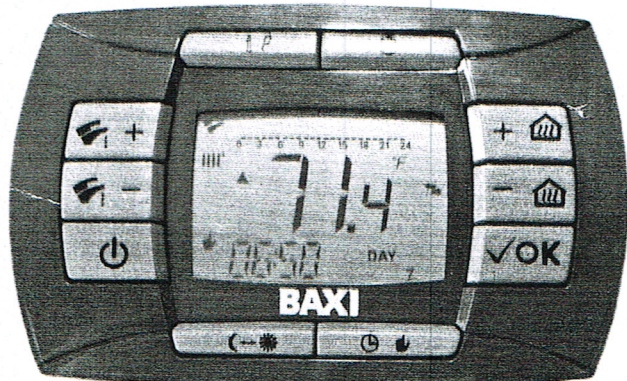


Baxi Luna 3 Comfort Modulating Wallhung Boiler



The new Baxi Luna 3 Comfort controller made by Bertelli & Partners enhances boiler set up and performance. It can also be used as room thermostat, communicating with an optional external sensor to optimize performance.

Advanced Functions

- ◆ Climatic curves selection (with external sensor)
- ◆ Selection of the type of building
- ◆ Self-learning function (automatic selection of the best climatic curve)
- ◆ Modulating thermostat
- ◆ DHW timer (with indirect cylinder)
- ◆ Sets up in F° or C°
- ◆ Optional A/C control

Controller Info Mode

- ◆ Actual DHW temperature
- ◆ Actual external temperature
- ◆ CH set-point temperature
- ◆ Actual CH temperature
- ◆ DHW flow rate
- ◆ Current modulating %
- ◆ Boiler Output %
- ◆ Flame signal %

Mechanical Specifications

Furnish and install a fully, modulating wallhung boiler, as shown in the plans. The boiler shall be a Baxi Luna 3 Comfort 310 Fi combination central heating and domestic hot water boiler, or approved equal. The boiler shall be pre-assembled, and NG/propane fired. The boiler shall include a Baxi controller made by Bertelli & Partners. It shall feature modulating sealed combustion with a nickel-chrome stainless steel AISI 316L premix burner and heat exchanger, as well as power venting using outdoor air for combustion. The boiler shall have an AFUE rating of 85.5%. The boiler shall be manufactured by an OHSAS 18001, ISO

14001 and ISO 9001 registered company to conform to Section IV of the ASME Boiler and Pressure Vessel Code. The boiler's heat exchangers shall bear the ASME H-Stamp. The boiler shall be CSA approved, and shall meet U.S. Environment Protection Agency and Department of Energy guidelines for "Energy Star"™ energy efficiency. The boiler shall feature these built-in components:

- ◆ 3-way electronic valve
- ◆ Circulating pump with built-in automatic air vent
- ◆ Pressure relief valve
- ◆ Expansion Tank
- ◆ Heating circuit fill and drain valves
- ◆ Electronic temperature control
- ◆ High limit switch
- ◆ Low water cut-off
- ◆ Backflow device
- ◆ Automatic by-pass
- ◆ Inducer fan

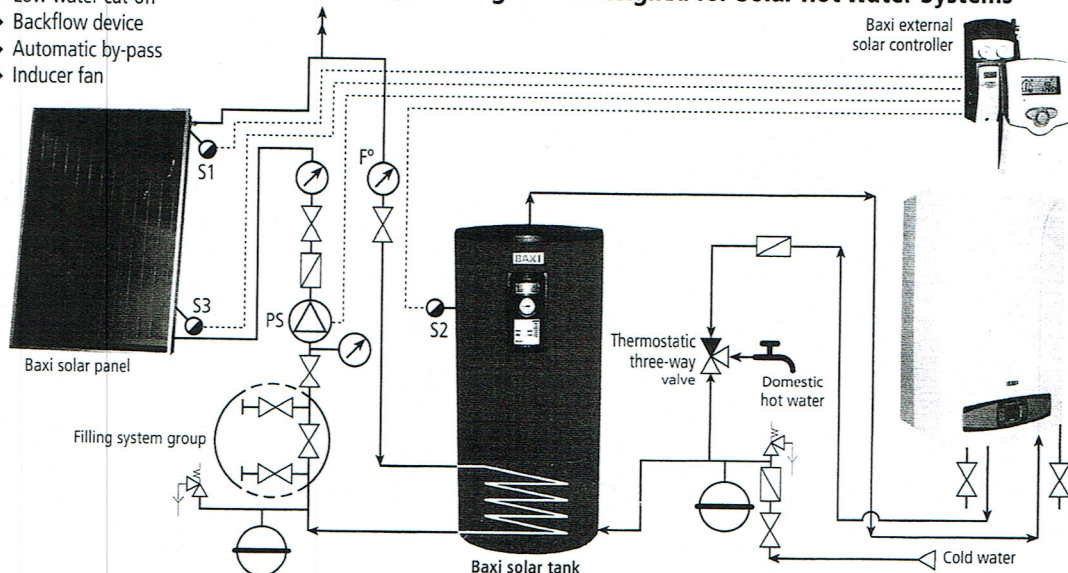
Technical Data		Baxi Luna 3 Comfort 310 Fi Combi CH & DHW	Baxi Luna 3 Comfort 1.31 Fi CH Boiler
AFUE rating	%	85.5	85.5
Thermal efficiency (maximum)	%	89	89
Rated heat input		126,249	126,249
Reduced heat input	BTU/hr	45,040	45,040
Rated heat output		105,776	105,776
Reduced heat output		35,486	35,486
Sealed combustion chamber		yes	yes
Ignition		electronic	electronic
Anti-frost device on heating circuit		yes	yes
Maximum pressure on heating circuit	psi	43	43
Regulation of heating circuit water temperature – high temp	°F	86/180	86/180
– low temp	°F	86/113	86/113
Dimensions:			
Height	in	30.04	30.04
Width	in	17.71	17.71
Depth	in	13.58	13.58
Coaxial/Dual flue tube	in	2.36-3.93/3.14	2.36-3.93/3.14
Net weight	lbs	90	86
Gas type		NG/LP	NG/LP

Baxi Luna 3 Comfort 310Fi is a combination central heating and DHW boiler. A separate plate-to-plate heat exchanger produces DHW of 3.3 gpm at delta T 77°F. All heat exchangers in Baxi Luna boilers are ASME H-Stamp certified, and come with a 10-year warranty.

Baxi Luna 3 Comfort 310Fi and 1.31Fi Modulation Range (BTU/hr)



First Wallhung Boiler Designed for Solar Hot Water Systems



BAXI

Marathon International
 Exclusive North American Distributor for BAXI Products
 1815 Sismet Road, Mississauga, Ontario L4W 1P9, Canada
 1-800-461-4657 ◆ info@wallhungboilers.com

www.wallhungboilers.com

