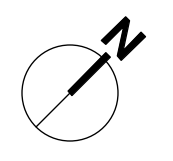
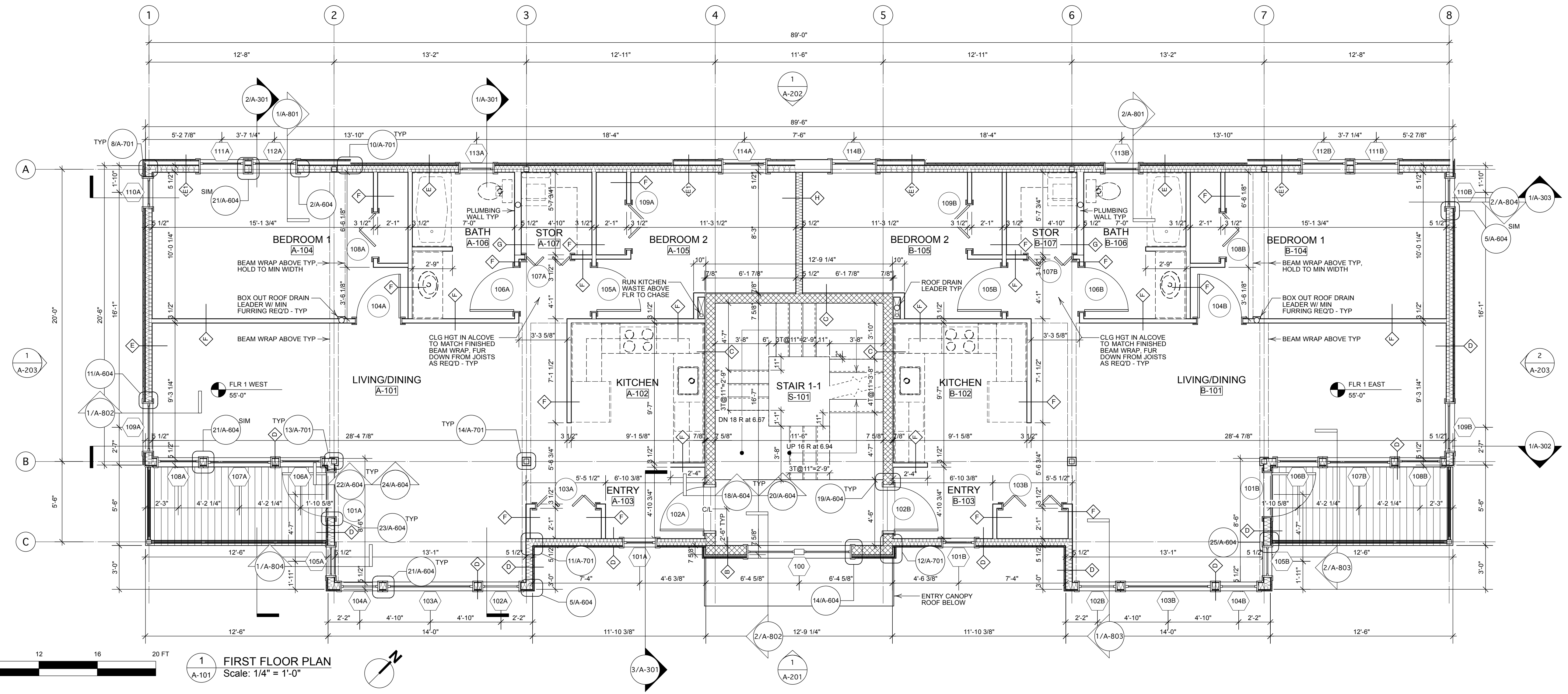
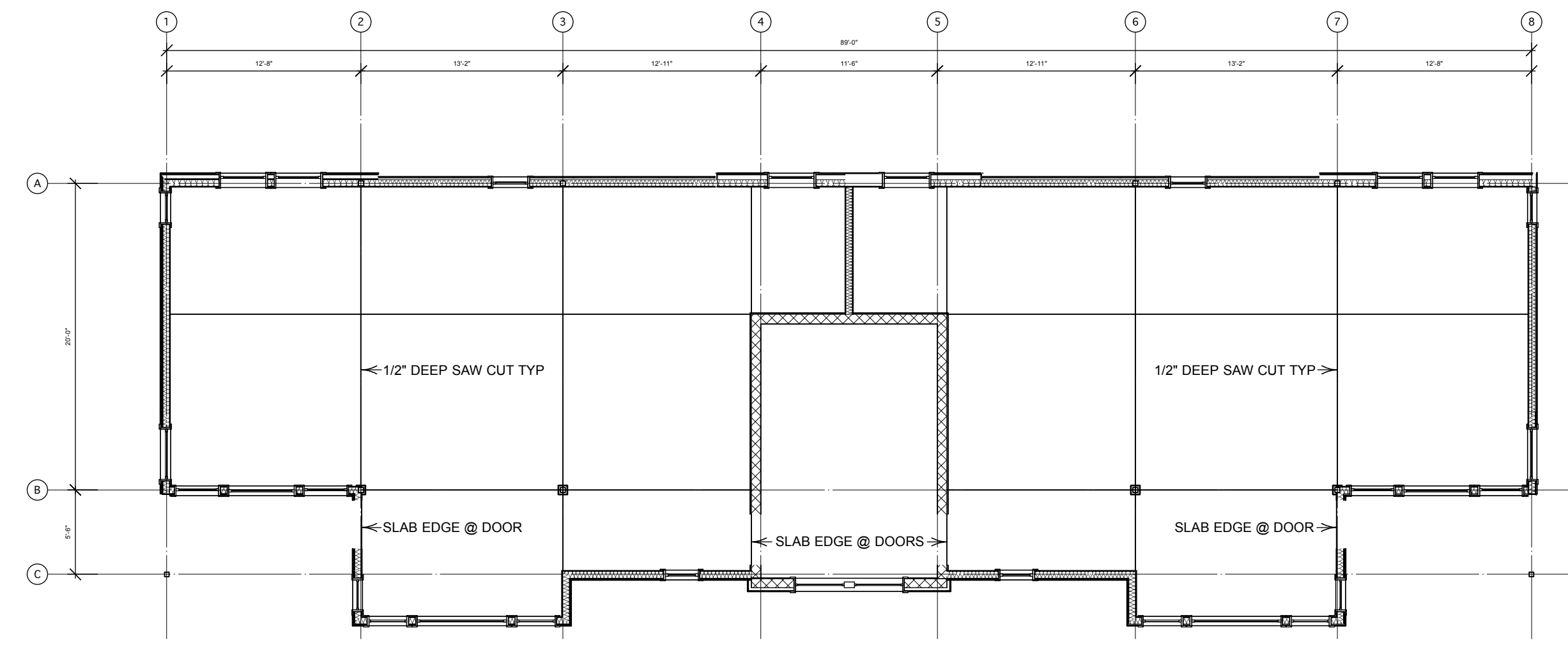


GENERAL NOTES

- ALL INTERIOR PARTITIONS ARE 3 1/2" WOOD STUDS UNLESS DIMENSIONED OTHERWISE.
 - WALL DIMENSIONS ON PLAN ARE TO FACE OF STUD PARTITION UNLESS NOTED OTHERWISE.
 - COORDINATE MASONRY OPENING SIZES WITH ACTUAL DOOR AND WINDOW UNITS PROVIDED FOR THIS JOB. SEE STRUCTURAL DRAWINGS FOR LINTELS.
 - ROUGH OPENING DIMENSIONS GIVEN ON DOOR AND WINDOW SCHEDULES ARE NOMINAL. THE CONTRACTOR SHALL DETERMINE ACTUAL OPENING DIMENSIONS BASED UPON DOOR AND WINDOW UNITS PROVIDED FOR THIS JOB.
 - ALL DOOR OPENINGS ARE TO BE FRAMED 4" FROM NEAREST ADJACENT WALL ON HINGE SIDE UNLESS DIMENSIONED OTHERWISE.
 - SEE DRAWING A-601 FOR DOOR SCHEDULE AND DOOR TYPES.
 - SEE DRAWING A-602 FOR WINDOW SCHEDULE AND WINDOW TYPES.
 - SEE DRAWING A-603 FOR FINISH SCHEDULE AND WALL TYPES.
 - ALL INTERIOR PARTITIONS SHALL BE FULL HEIGHT TO UNDERSIDE OF FLOOR OR ROOF FRAMING ABOVE. PROVIDE BLOCKING BETWEEN JOISTS AS REQUIRED.
 - PROVIDE STAIR UNITS IN CONFIGURATIONS SHOWN ON THE DRAWINGS AND AS DESCRIBED IN THE SPECIFICATIONS. EACH FLOOR-TO-FLOOR FLIGHT SHALL INCLUDE:
 - MC12x10.6 MINIMUM FOR STRINGER AND LANDING FRAMING.
 - HANDRAILS MOUNTED ON CMU WALLS AND GUARD RAILS AT 2'-10" ABOVE NOSINGS TO FEATURE CODE COMPLYING OVERRUNS AT TOP AND BOTTOM ENDS. HANDRAILS SHALL BE ROUND PIPE, MINIMUM DIAMETER 1 1/4" AND MAXIMUM DIAMETER 2".
 - CONTINUOUS GUARDRAILS ON OPEN SIDES WITH BOTTOM RAIL LEAVING A GAP NO MORE THAN 3 7/8" ABOVE TOP OF STRINGER, TOP RAIL AT 42" ABOVE NOSINGS, AND INNER HANDRAIL AS MENTIONED ABOVE. GUARDRAIL SHALL FEATURE 2" SQUARE TUBE TOP AND BOTTOM RAILS AND 3/4" SQUARE STEEL BAR BALUSTERS WITH CLEAR SPACE BETWEEN OF NO MORE THAN 3 7/8". GUARDRAILS SHALL BE CONTINUOUS AT ALL STAIR FLIGHTS AND LANDINGS.
 - CONCRETE FILLED METAL PAN FLAT LANDINGS AT EACH MAIN FLOOR LEVEL. LANDINGS SHALL EXTEND FULLY THROUGH CMU WALL OPENINGS AT UNIT DOORS. DOOR THRESHOLD SHALL COVER JOINT BETWEEN LANDING AND UNIT FLOOR.
 - AUXILIARY STEEL & CONCRETE PAN STEPS AND LANDINGS WITH HANDRAILS AND GUARDRAILS AT EAST SIDE SECOND AND THIRD FLOOR UNITS FOR A COMMON APPEARANCE THROUGHOUT ALL STAIRS AS SHOWN IN DRAWINGS.
- FABRICATION AND ERECTION OF STAIR UNITS MAY BE ACHIEVED WITH FASTENERS EMBEDDED IN REINFORCED CMU BUT NO FASTENERS MAY FULLY PENETRATE CMU. CONTRACTOR SHALL COORDINATE LOCATIONS OF FULLY GROUTED AND REINFORCED CMU CELLS WITH FASTENER LOCATIONS.



Project Name	Residential Housing Project 133 York Street Portland, Maine
Design Firm	HKTA/architects 482 Congress Street Suite 502 Portland, Maine 04101
Contractor	Pinkham & Greer Consulting Engineers 28 Vanah Avenue Portland, Maine 04103
Scale	Sheet Scale
Drawing No.	A-101
Date	8/20/14
Revision	2013005
Project ID	2013005
Drawing Code	
Checked By	
Reviewed By	
Submitted By	
Project Manager	

Issue No.	3	Date	8/20/14	Issue Notes	Issued for Construction
Issue No.	2	Date	4/3/14	Issue Notes	Issue Set
Issue No.	1	Date	7/26/13	Issue Notes	Issue Set

Zone	
Revision Notes	
Date	
No.	

REGISTERED ARCHITECT
ROBERT HOWE
No. 1241
STATE OF MAINE

HKTA / architects
30 Danforth Street Suite 209
Portland, Maine 04101
phone: 207. 774. 6016
fax: 207. 774. 9128
email: hktain@maine.rr.com