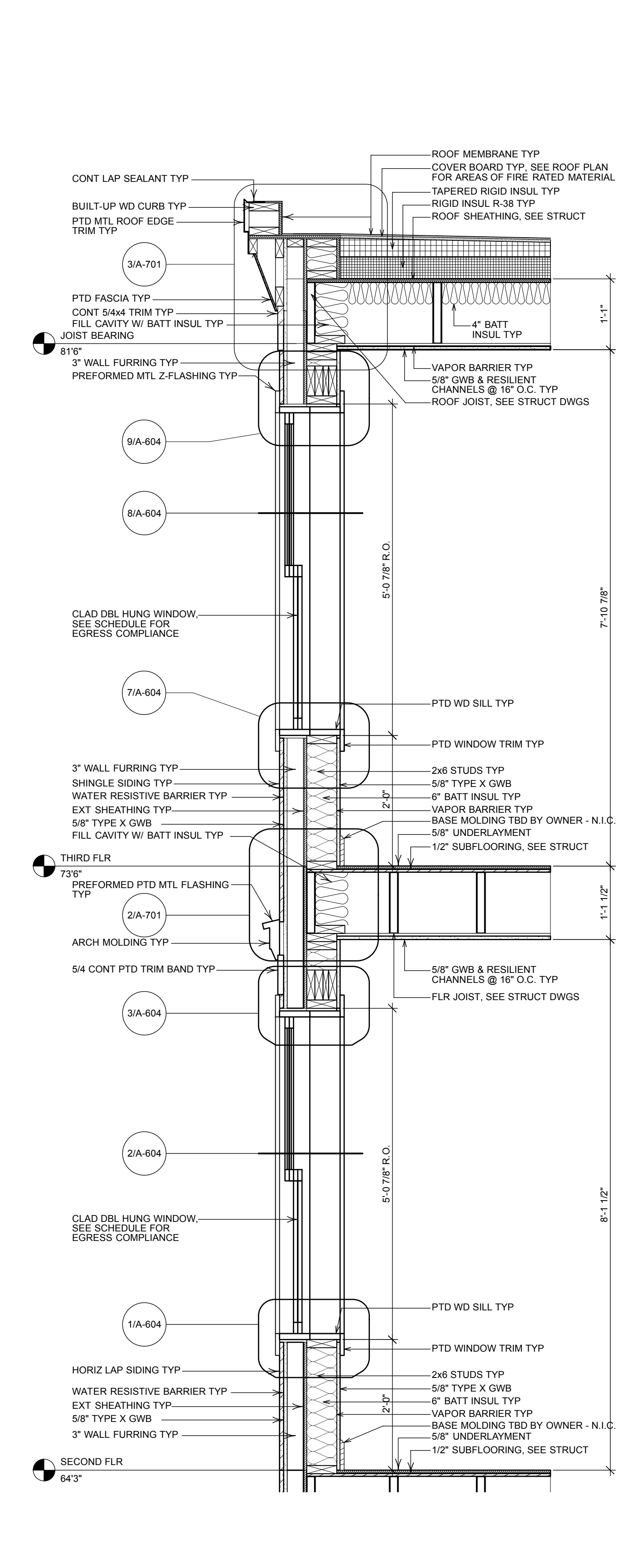
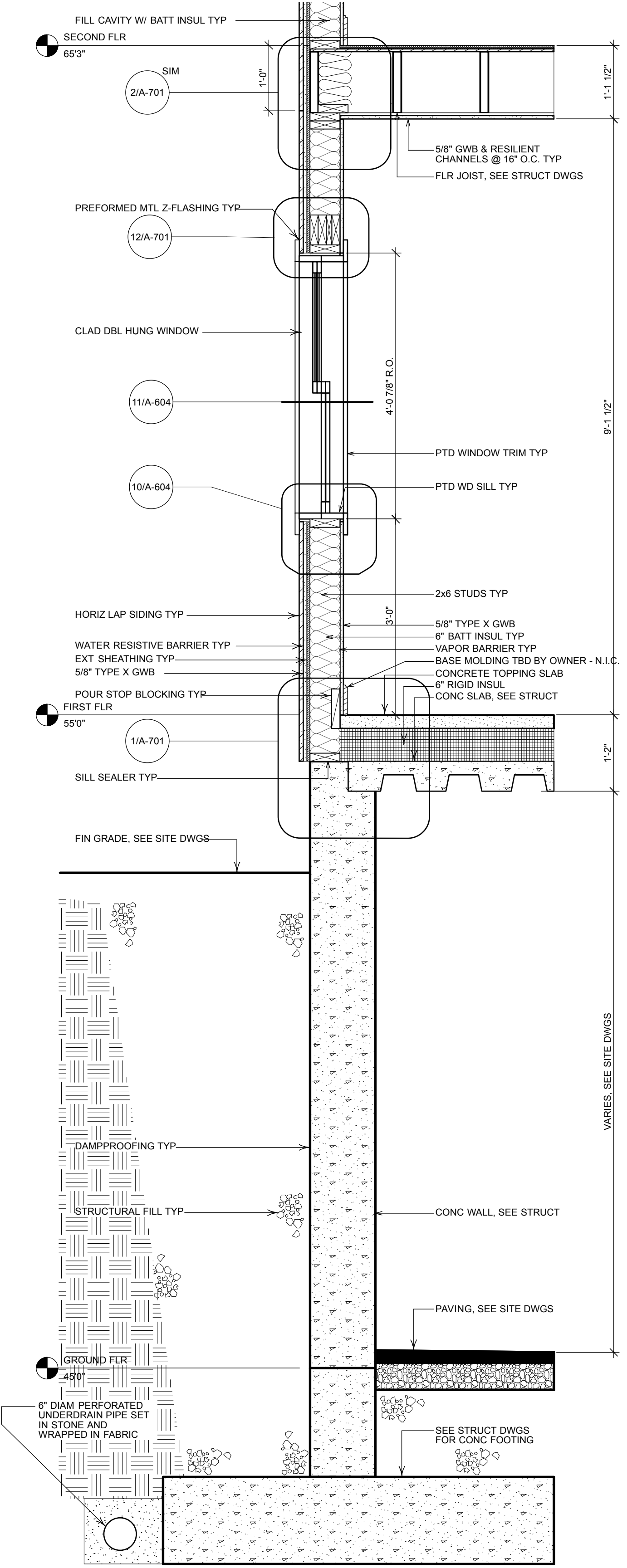


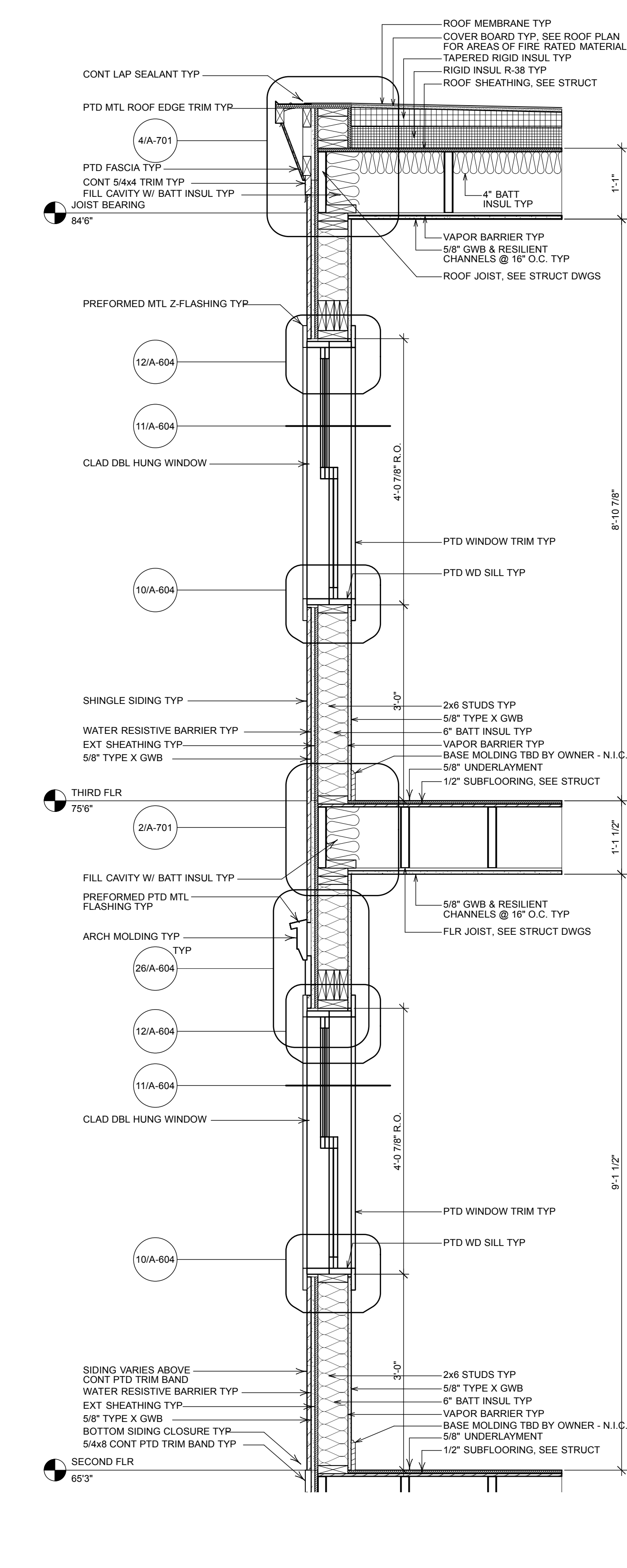
1 WALL SECTION 1
Scale: 3/4" = 1'-0"
A-801



1 WALL SECTION 1 CONT
Scale: 3/4" = 1'-0"
A-801



2 WALL SECTION 2
Scale: 3/4" = 1'-0"
A-801



2 WALL SECTION 2 CONT
Scale: 3/4" = 1'-0"
A-801

Project Title	Residential Housing Project 133 York Street Portland, Maine	Project No.	82014	Issue Set	1	Date	7/26/13	Revision Notes		Zone		Appr	
Design Firm	HKTA/architects 482 Congress Street Suite 502 Portland, Maine 04101	Contractor	Pinkham & Greer Consulting Engineers 28 Hannah Avenue Portland, Maine 04103	Drawn By	reh	Checked By	reh	Issue Set	Issue Set				
Scale	Sheet Scale	Project ID	2013005	Drawn By	reh	Checked By	reh	Issue Set	Issue Set				
Project Title	Residential Housing Project 133 York Street Portland, Maine	Project No.	82014	Issue Set	1	Date	7/26/13	Revision Notes		Zone		Appr	
Design Firm	HKTA/architects 30 Danforth Street Suite 209 Portland, Maine 04101	Contractor	Pinkham & Greer Consulting Engineers 28 Hannah Avenue Portland, Maine 04103	Drawn By	reh	Checked By	reh	Issue Set	Issue Set				
Scale	Sheet Scale	Project ID	2013005	Drawn By	reh	Checked By	reh	Issue Set	Issue Set				
Project Title	Residential Housing Project 133 York Street Portland, Maine	Project No.	82014	Issue Set	1	Date	7/26/13	Revision Notes		Zone		Appr	
Design Firm	HKTA/architects 30 Danforth Street Suite 209 Portland, Maine 04101	Contractor	Pinkham & Greer Consulting Engineers 28 Hannah Avenue Portland, Maine 04103	Drawn By	reh	Checked By	reh	Issue Set	Issue Set				
Scale	Sheet Scale	Project ID	2013005	Drawn By	reh	Checked By	reh	Issue Set	Issue Set				



HKTA / architects
30 Danforth Street Suite 209
Portland, Maine 04101
phone: 207. 774. 6016
fax: 207. 774. 9128
email: hka@maine.rr.com

A-801
of
31