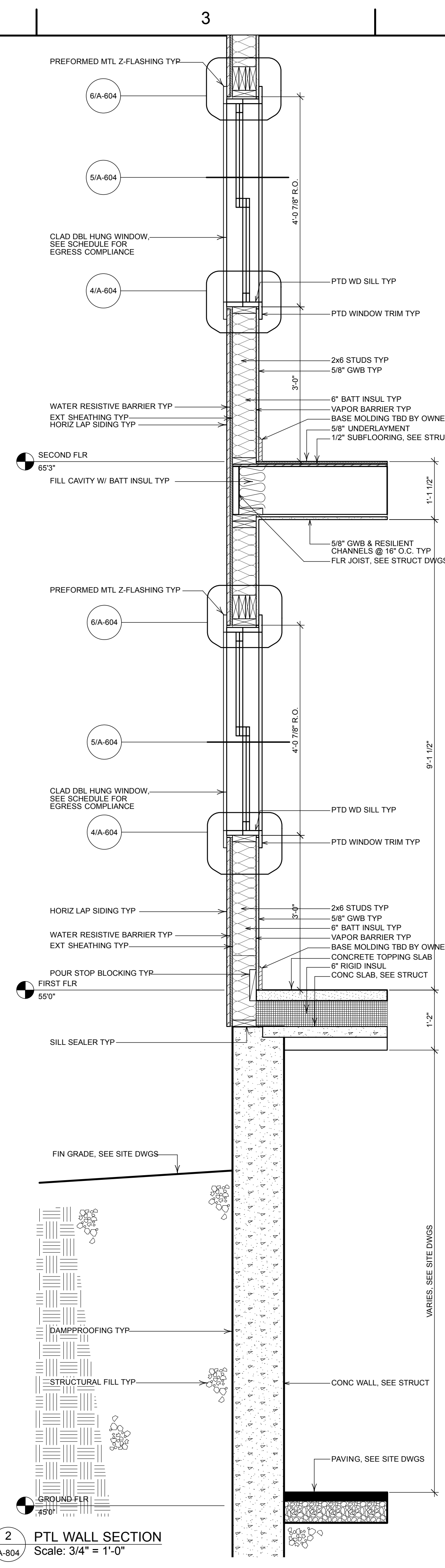
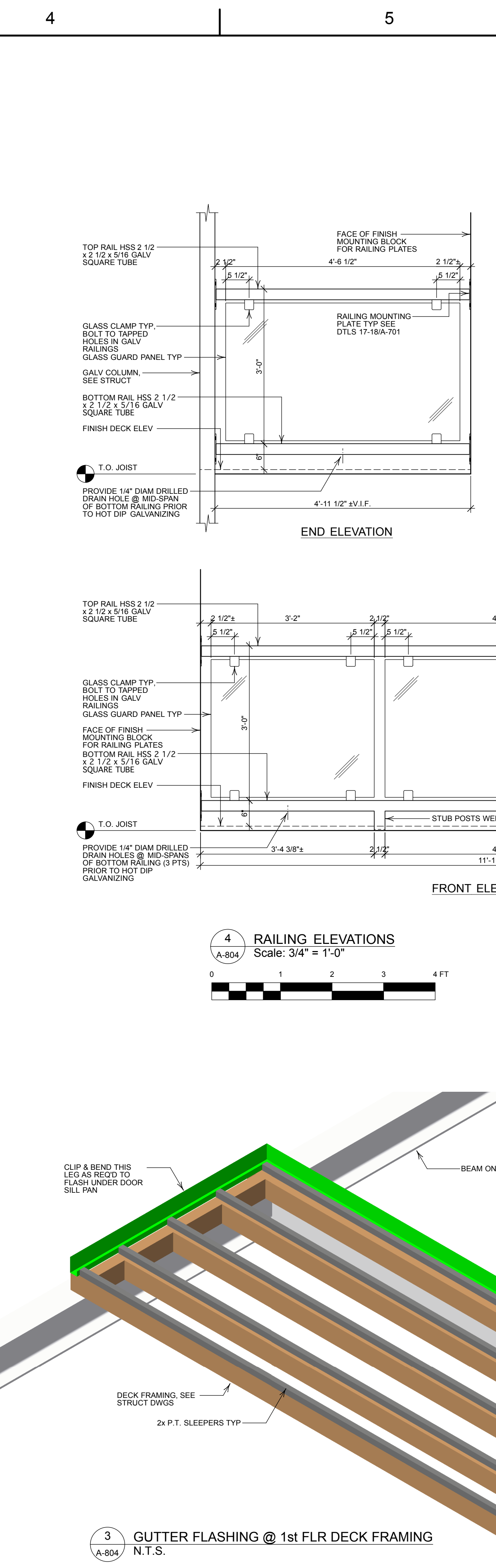


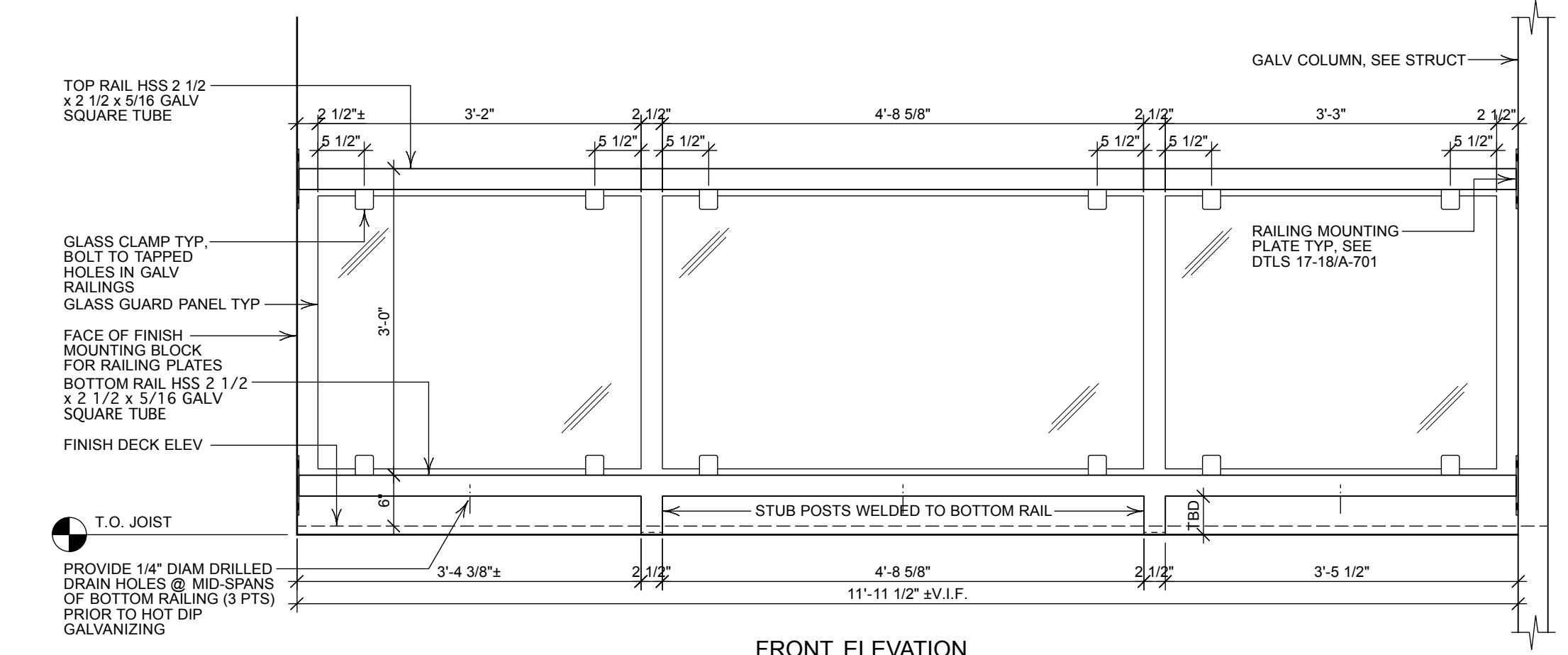
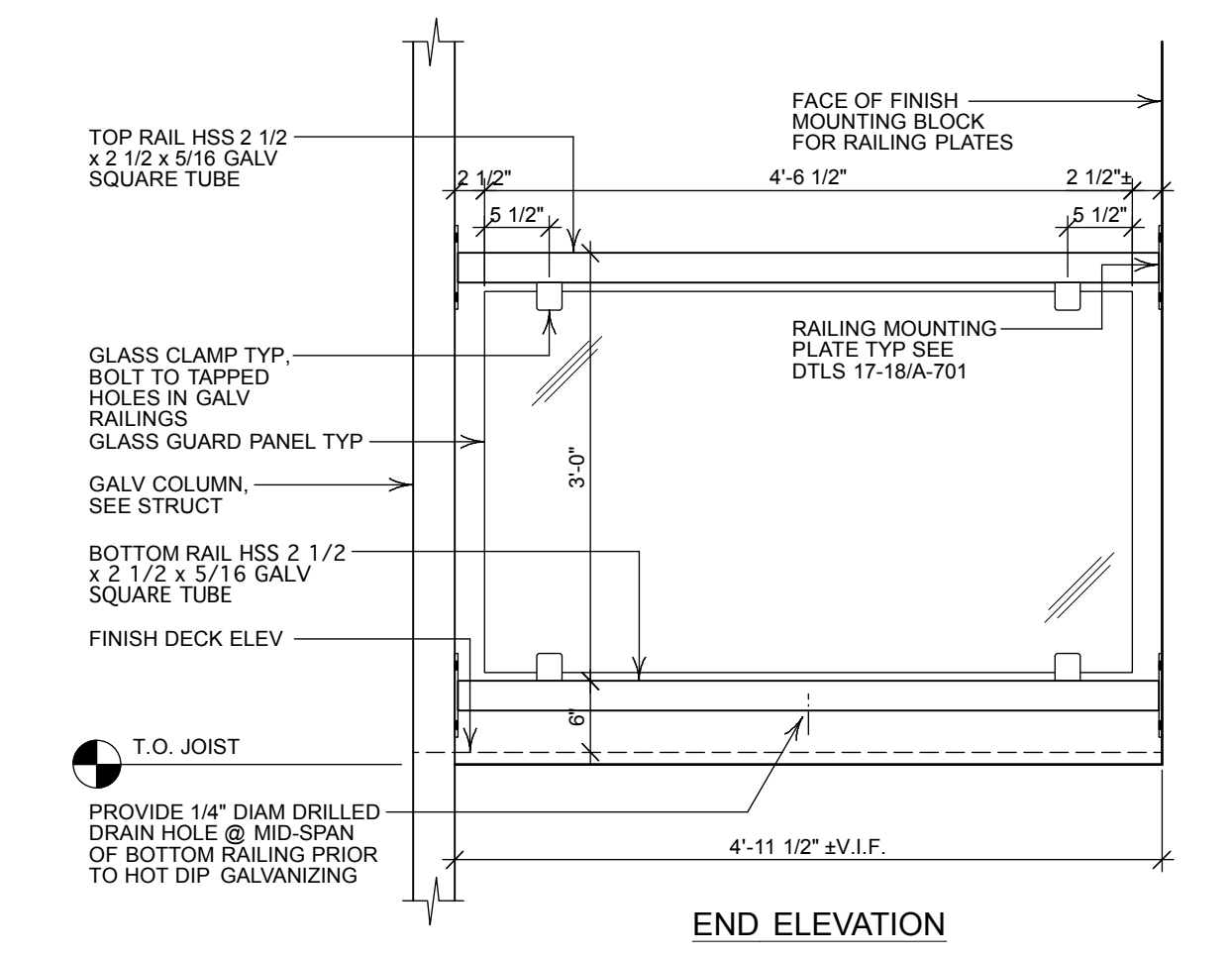
1 PTL WALL SECTION
Scale: 3/4" = 1'-0"



2 PTL WALL SECTION
Scale: 3/4" = 1'-0"



3 GUTTER FLASHING @ 1st FLR DECK FRAMING
N.T.S.



4 RAILING ELEVATIONS
Scale: 3/4" = 1'-0"



NOTE:
TAP BOLT HOLES FOR GLASS CLAMPS PER DIMENSIONS SHOWN PRIOR TO HOT DIP GALVANIZING RAILINGS. CONTRACTOR TO COORDINATE HOLE LOCATIONS, BOLT & THREAD SIZE OF CLAMP FASTENERS TYP.
CONTRACTOR SHALL COORDINATE DIMENSIONS FOR STUB POSTS WELDED TO BOTTOM RAILING. FILLET/FLARE-BEVEL WELD ALL AROUND & GRIND SMOOTH TYP. PROVIDE 1/4" CLOSURE PLATE AT BOTTOM OF EACH STUB POST. NOTE THAT LENGTH OF POSTS IS DIFFERENT FOR 1st FLOOR DECKS.

HKTA / architects
30 Danforth Street Suite 209
Portland, Maine 04101
phone: 207. 774. 6016
fax: 207. 774. 9128
email: hktain@maine.rr.com

Project Title	Residential Housing Project 133 York Street Portland, Maine	Design Firm	HKTA/architects 482 Congress Street Suite 502 Portland, Maine 04101
Drawing Title	Wall Sections-4 Deck Gutter Flashing Railing Elevations	Contractor	Pinkham & Greer Consulting Engineers 28 Vannah Avenue Portland, Maine 04103
Scale	Sheet Scale	Drawn By	reh
Issue Notes	Issued for Construction Issue Set Issue Set	Checked By	reh
Date	8/20/14 4/3/14 7/26/13	Reviewed By	reh
No.	3 2 1	Submitted By	reh
Zone		Approved By	reh
Revision Notes		Project ID	2013005
Date		Drawing Code	
No.		Scale	1/32" = 1'-0"
Date		Project Name	133 York, V.W.K.
No.		Plot Date	

HKTA / architects
30 Danforth Street Suite 209
Portland, Maine 04101
phone: 207. 774. 6016
fax: 207. 774. 9128
email: hktain@maine.rr.com

A-804
of
31