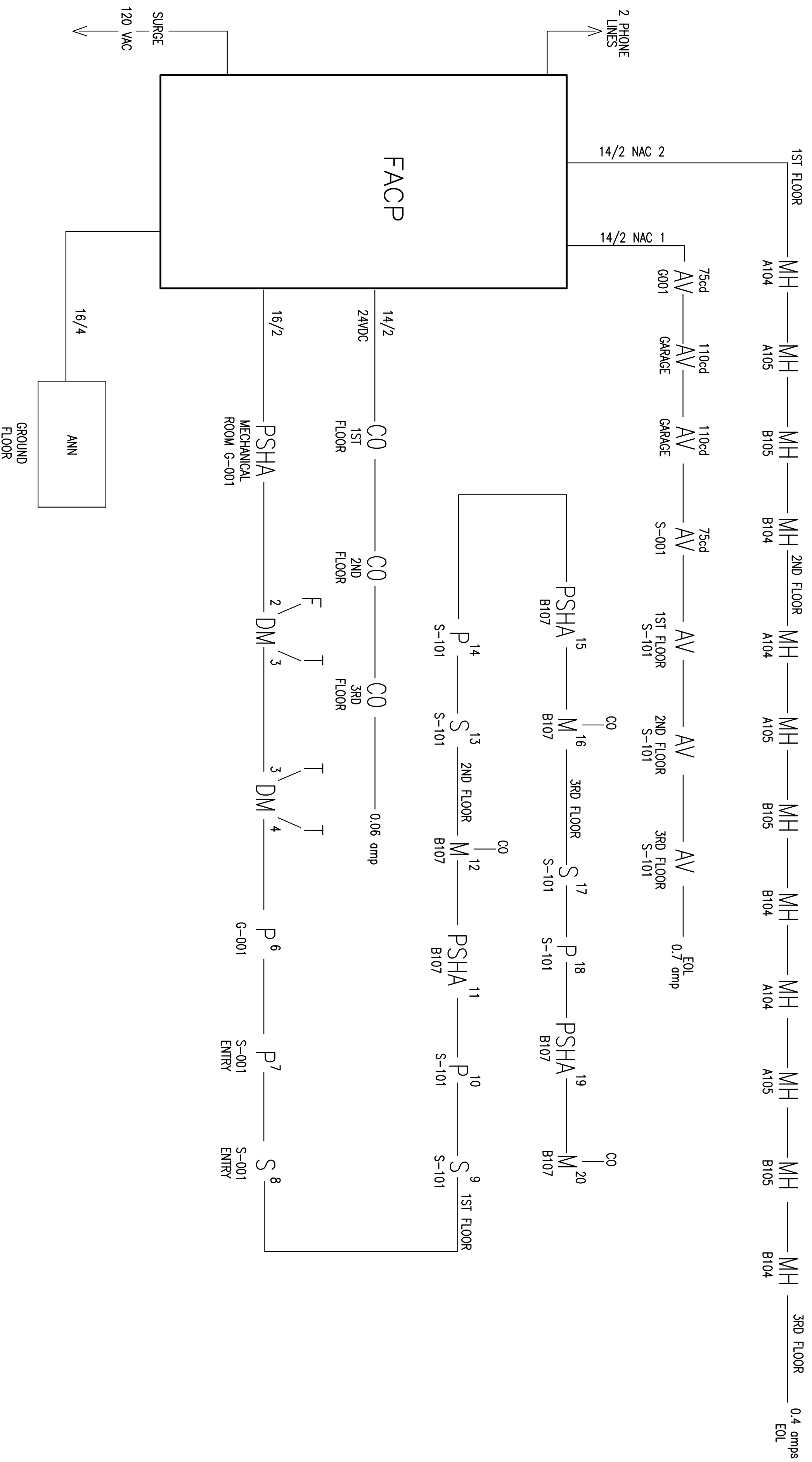


- (1) GENERAL NOTES:
 A. FIRE ALARM SYSTEM WIRING SHALL COMPLY WITH THE NATIONAL ELECTRICAL CODE, APPLICABLE STATE AND LOCAL CODES, AND SHALL BE COORDINATED WITH THE LOCAL AUTHORITY HAVING JURISDICTION.
 B. CAUTION: DO NOT CONNECT ANY POWER TO THE CONTROL PANEL. (BATTERIES OR 120V AC)
 C. DO NOT INSTALL FIRE ALARM CONTROL PANEL OR SMOKE DETECTORS IN AN UNHEATED AREA.
 D. DO NOT INSTALL ANY AC CURRENT-CARRYING CONDUCTORS CLOSE TO OR IN THE SAME RACEWAY WITH FIRE ALARM SYSTEM CONDUCTORS.
 E. SOLID LINES REPRESENT CONNECTIONS TO BE MADE BY THE SYSTEM INSTALLER.
 F. ALL RELAYS ARE SHOWN IN NORMAL SUPERVISORY CONDITION. ALL RELAYS ARE FORM "C" TYPE.
 G. STROBES INSTALLED IN BEDROOMS SHALL BE LOCATED IN A SYMMETRICAL MANNER DOWN CENTER OF HALL WAY WHEN POSSIBLE.

- INSTALLATION NOTES:
 A. SMOKE DETECTORS SHALL NOT BE MOUNTED ANY CLOSER THAN 3" FROM ANY AIR DUCT OPENINGS.
 B. ELEVATOR LOBBY SMOKE DETECTORS SHALL BE MOUNTED WITHIN 10' OF THE ELEVATOR DOOR.
 C. MANUAL PULL STATIONS SHALL BE MOUNTED PER ADA REQUIREMENTS: 48" AFF OR 42" AFF TO COMPLY WITH SIDE/FRONT REACH REQUIREMENTS.
 D. WALL MOUNTED HORN/STROBES & STROBES SHALL BE MOUNTED 6" FROM CEILING, OR 96" TO 80" AFF TO THE CENTER OF STROBE.
 E. HORN/STROBES & STROBES SHALL BE MOUNTED 15" FROM THE CORNER OF THE WALL. IF THIS IS NOT POSSIBLE, DEVICE SHALL BE CENTERED ON THAT WALL.
 F. CEILING MOUNTED HALLWAY DEVICES SHALL BE LOCATED IN A SYMMETRICAL MANNER DOWN CENTER OF HALLWAY WHEN POSSIBLE.

- (2) SEE INITIATION CIRCUITS AND NAC CIRCUITS FOR INTEGRATION OF BOTH SIC AND NAC CIRCUITS
 (3) ALL CABLING IS 14/2 FOR THE NAC CIRCUITS UNLESS OTHERWISE SHOWN
 (4) ALL CABLING IS 16/2 FOR THE SIC CIRCUITS UNLESS OTHERWISE SHOWN
 (5)
- | | |
|--------------------------------------|--|
| AC = ALARM CONTROL MODULE | K = KNOX BOX |
| R - ARM = ADDRESSABLE RELAY MODULE | LP = LOW AIR |
| AV = AUDIO VISUAL DEVICE | MM = MINI MODULE |
| (SET TO 75cd UNLESS NOTED OTHERWISE) | P = PULL STATION MINI MODULE |
| B = EXTERIOR BEACON | PS = PRESSURE SWITCH |
| CO = CO DETECTOR | RI = REMOTE INDICATOR |
| D = DUAL MODULE | S = SMOKE |
| DUCT-DUCT DETECTOR MINI MODULE | SA = SMOKE WITH AUDIBLE BASE |
| F = FLOW | T = TAMPER |
| FACP = MAIN FIRE PANEL | TS = TEST SWITCH |
| PS = FRESMART SMOKE DETECTOR | V = VISUAL DEVICE ONLY |
| H = HEAT DETECTOR | (SET TO 75cd UNLESS NOTED OTHERWISE) |
| I = ISOLATION MODULES | MH = MINI HORN |
| T.S. = TWISTED SHIELDED | RTS = REMOTE TEST MODULE |
| S/OO = SMOKE/CO DETECTOR (00HC941) | PS = PULL STATION |
| RL = REMOTE LIGHT | CL = CORRIDOR LIGHT |
| [F] = FIRE EXTINGUISHER MONITORING | CO = CO DETECTOR (REQUIRES 24 VDC POWER) |
| | SCM = INPUT MODULE |



DRAWING: RISERS

PROJECT: 100 YORK STREET
PORTLAND, MAINE

DATE: 05/20/15
 SCALE: NTS
 DRAWN BY: SSA
 APPROVED BY: -
 SHEET: 1

CONSULTANT:

Phone: (207) 775-5755
 Fax: (207) 781-2064

325 US ROUTE ONE
 FALMOUTH, ME 04105