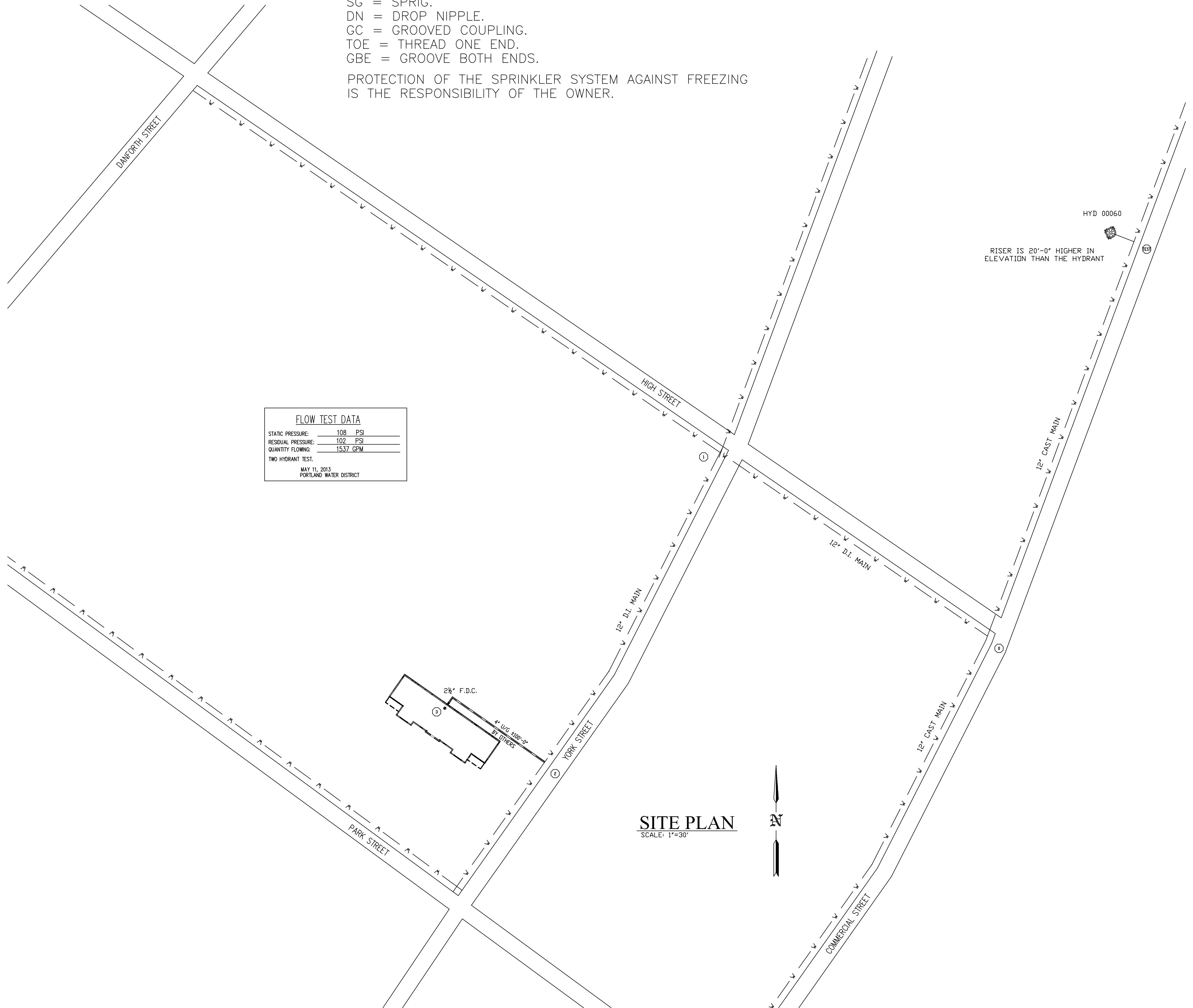
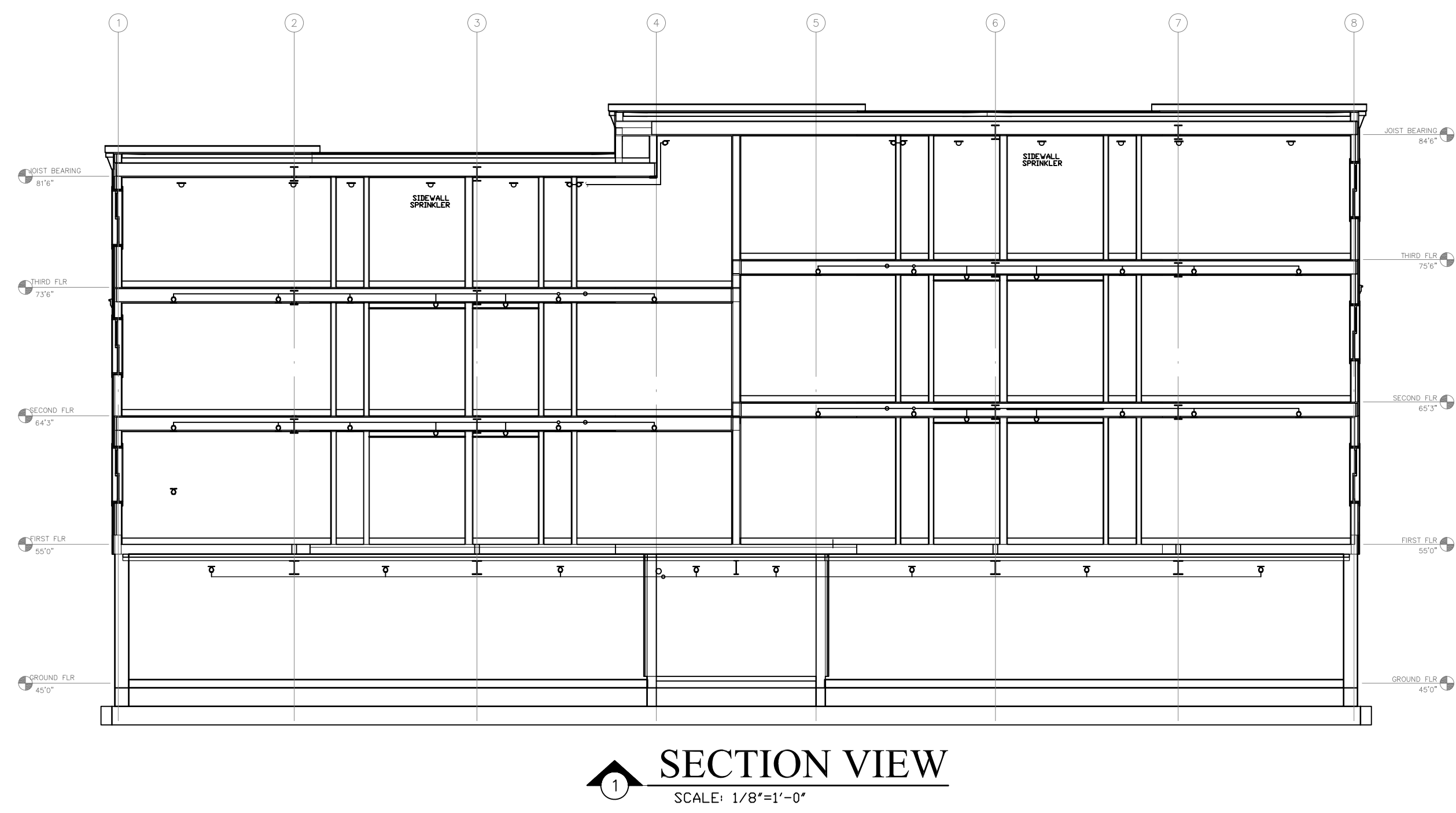
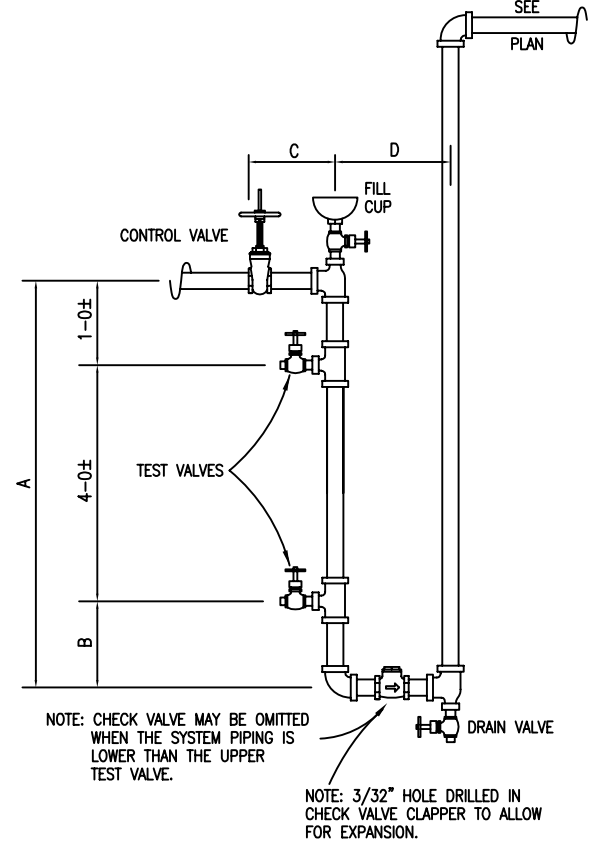
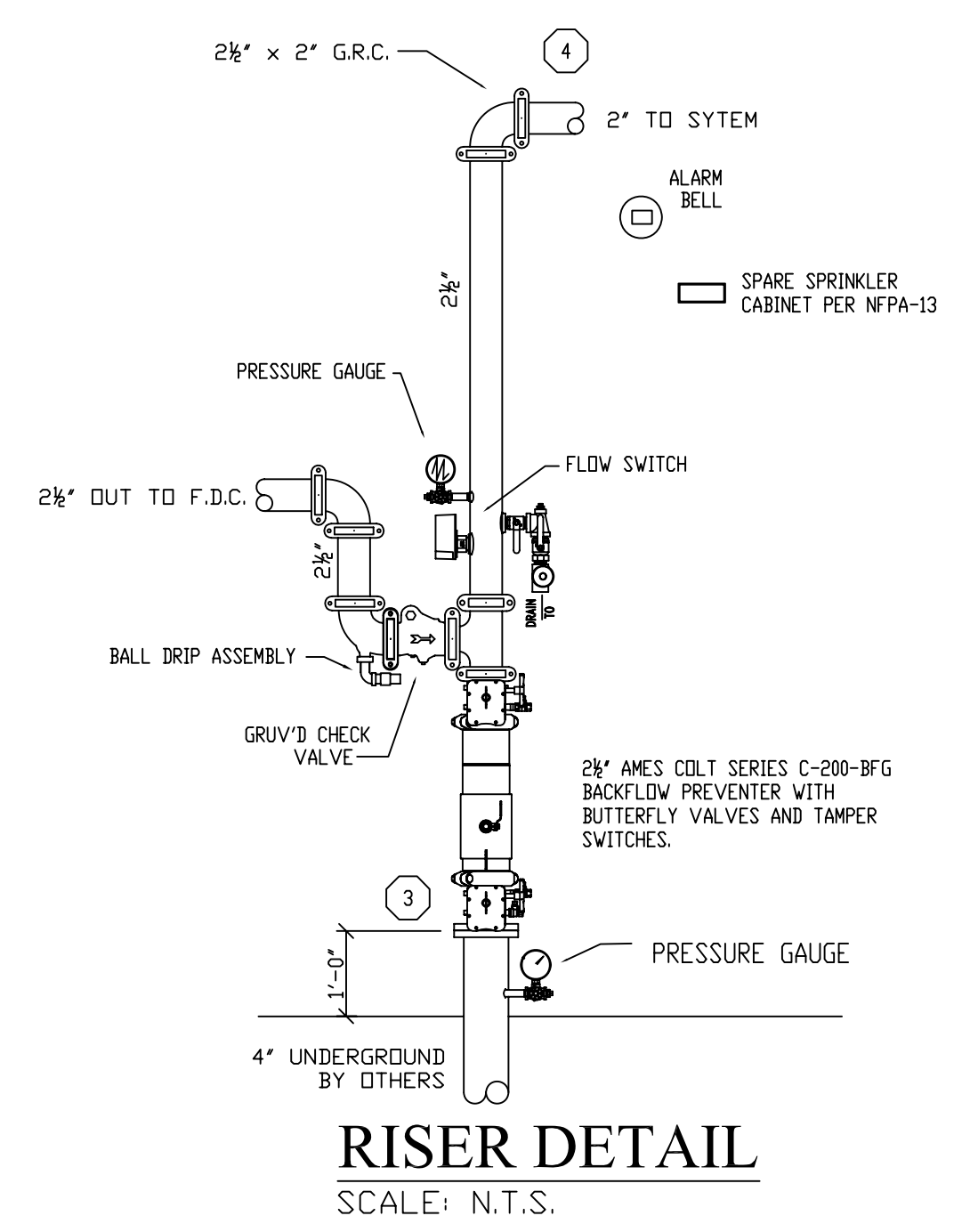


FIRE SPRINKLER GENERAL NOTES

OCCUPANCY: CONDOMINIUMS
 DESIGN STANDARD: NFPA-13 2010 LIGHT HAZARD & ORDINARY HAZARD GROUP I
 AND NFPA-13R 2010.
 DESIGN DENSITY: 0.10/AREA, 0.15/AREA & 0.05/ AREA
 SPRINKLERS UPRIGHT: TYCO (AS NOTED ON PLAN)
 SPRINKLERS PENDENT: TYCO (AS NOTED ON PLAN)
 ESCUTCHEONS: WHITE 2 PIECE SEMI-REC.
 PIPING 1"-1 1/2": SCH. 40 BLACK STEEL WITH THREADED ENDS.
 PIPING 2"-6": SCH. 10 BLACK WITH GROOVED ENDS AND APPROVED
 BLAZEMASTER PLASTIC CPVC DESIGNED AND APPROVED TO BE USED WITH THIS STANDARD.
 HANGERS TO BE U.L. & FM APPROVED.
 AND SPACED PER NFPA-13
 ALL PIPING TO BE TESTED AT 200 PSI FOR 2 HOURS.
 PROVIDE TAMPER SWITCH ON ALL CONTROL VALVES.
 PROVIDE HYDRAULIC NAME PLATE PER NFPA-13.
 COORDINATE FIRE SPRINKLER PIPING WITH OTHER TRADES.
 (⊙) DENOTES HYDRAULIC REFERENCE POINTS.
 ─┬─ DENOTES GROOVED COUPLING IN PIPE.
 RN = RISER NIPPLE.
 SG = SPRIG.
 DN = DROP NIPPLE.
 GC = GROOVED COUPLING.
 TOE = THREAD ONE END.
 GBE = GROOVE BOTH ENDS.
 PROTECTION OF THE SPRINKLER SYSTEM AGAINST FREEZING
 IS THE RESPONSIBILITY OF THE OWNER.



FLOW TEST DATA	
STATIC PRESSURE:	108 PSI
RESIDUAL PRESSURE:	102 PSI
QUANTITY FLOWING:	1537 GPM
TWO HYDRANT TEST:	
MAY 11, 2013	
PORTLAND WATER DISTRICT	



ANTIFREEZE LOOP DETAIL
 (UNLESS SHOWN OTHERWISE, ALL MATERIALS SHALL BE AS SHOWN)
 NOTE: SEE FROM UNIT LITERATURE FOR MATERIALS REQUIRED.

SIZE	A	B	C	D	DRINK
1	5-35	0-35	0-5	0-8	1/4
1 1/2	5-35	0-35	0-5	0-8	1/4
2	5-45	0-45	0-5	0-10	1/4
2 1/2	5-55	0-55	0-5	0-11	1/4
3	5-65	0-65	1-05	1-10	1/4
4	5-85	0-85	1-15	1-15	1/4

■ ANTI-FREEZE TYPE 50/50 FACTORY PREMIX.
 ■ TOTAL CAPACITY OF ANTIFREEZE SYSTEM = 15 GALLONS

REVISIONS	NOTES	SPRINKLER TYPE	IDENTIFICATION NO.	MFG.	ESC.	MODEL	FINISH	ORIFICE	TEMP.	SYMBOL	QUANT.
TOTAL SPRINKLERS THIS DRAWING											

STANDARD SYMBOLS	
	- POST INDICATOR VALVE
	- KEY VALVE
	- FIRE HYDRANT
	- FIRE DEPT. CONNECTION
	- O.S. & Y GATE VALVE
	- SWING CHECK VALVE
	- NEW UNDERGROUND
	- EXIST UNDERGROUND

STANDARD SYMBOLS	
	- ALARM CHECK VALVE
	- RISER W/ALARM VALVE
	- RISER W/DRY VALVE
	- RISER W/ELEC. FLOW SWITCH
	- RISER W/DELUGE VALVE
	- WATER MOTOR BELL
	- ELECTRIC BELL
	- FLUSH FIRE DEPT. CONNECTION

INSPECTIONS	
1.	
2.	
3.	
4.	
5.	

RESPONSIBLE MANAGING SUPERVISOR #348	
CONTRACTOR LICENSE #295	

RESIDENCE HOUSING 133 YORK STREET PORTLAND, MAINE 04101	
FIRE PROTECTION PLAN	
FREEDOM FIRE PROTECTION, INC. 209 QUAKER RIDGE ROAD CASCO, MAINE 04015	

JOB No.	M0178
DATE	7/22/14
DRAWN BY	MJN
SCALE	AS NOTED
SHEET No.	FP-1 of 3