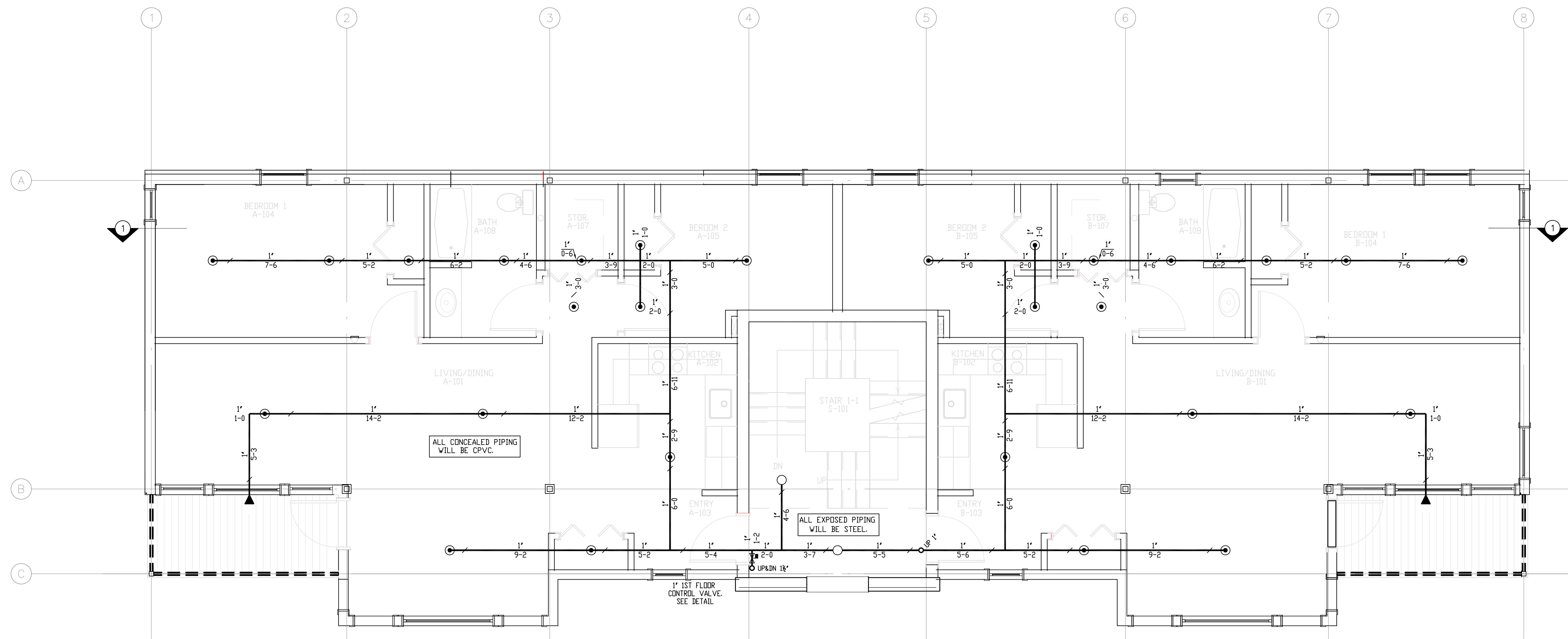
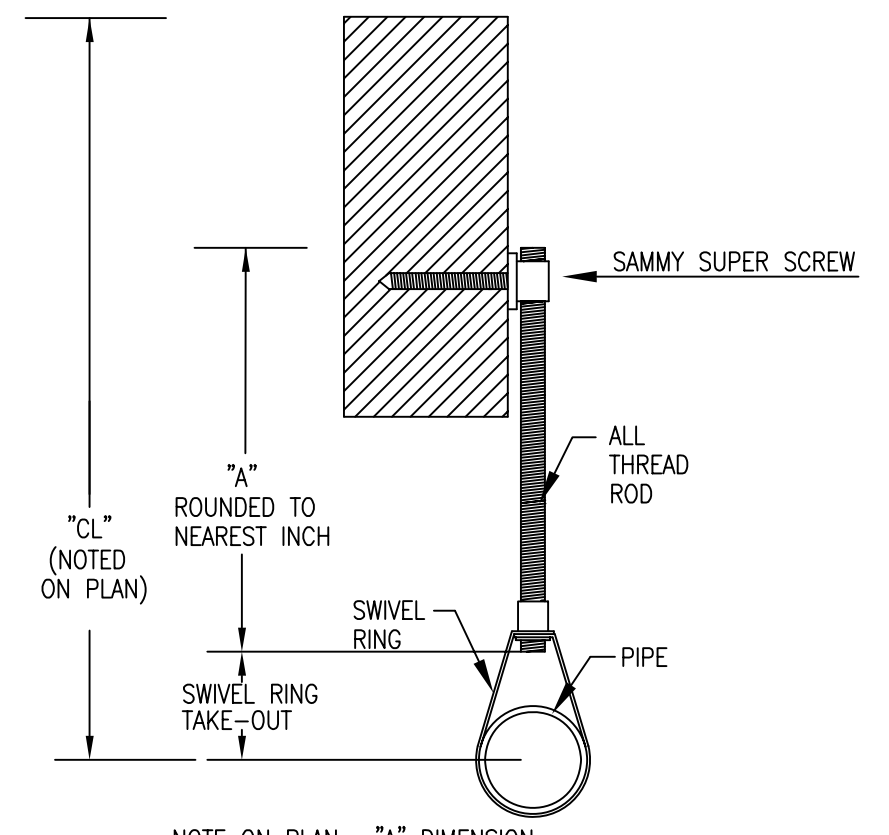
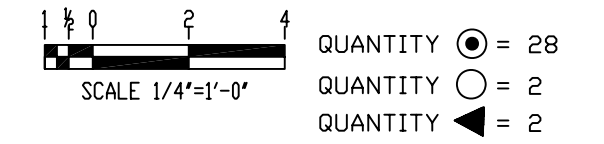


FIRST FLOOR CONTROL VALVE

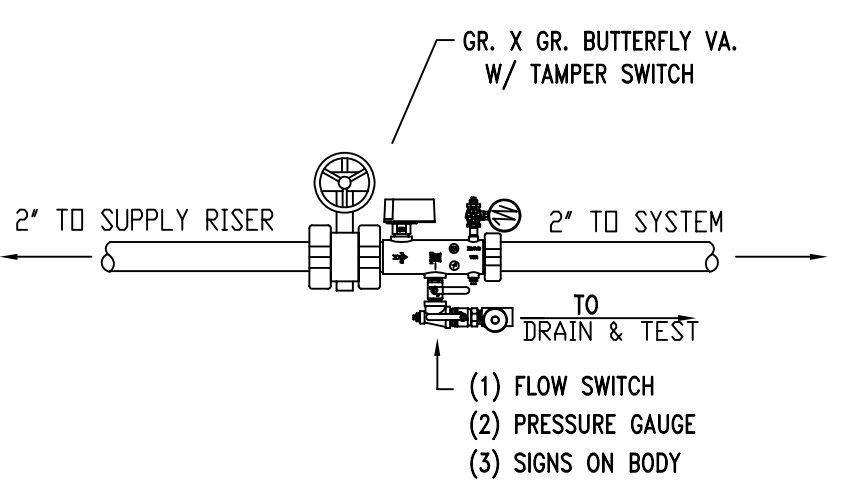


FIRST FLOOR FIRE PROTECTION

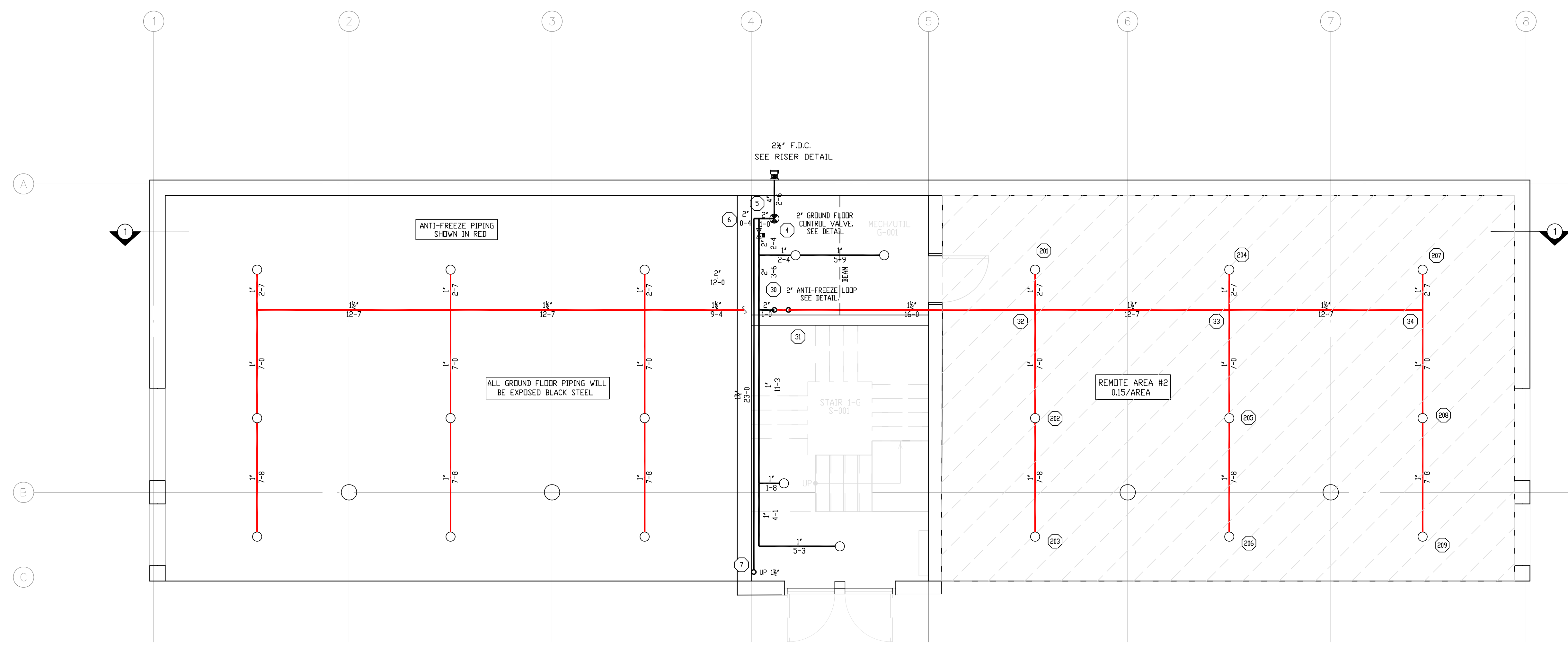


NOTE ON PLAN: "X" DIMENSION
 PIPE SIZES 1" THROUGH 4" - ROD SIZE 3/8"
 PIPE SIZES 5" THROUGH 8" - ROD SIZE 1/2"
TYPE #10 HANGER
 NO SCALE

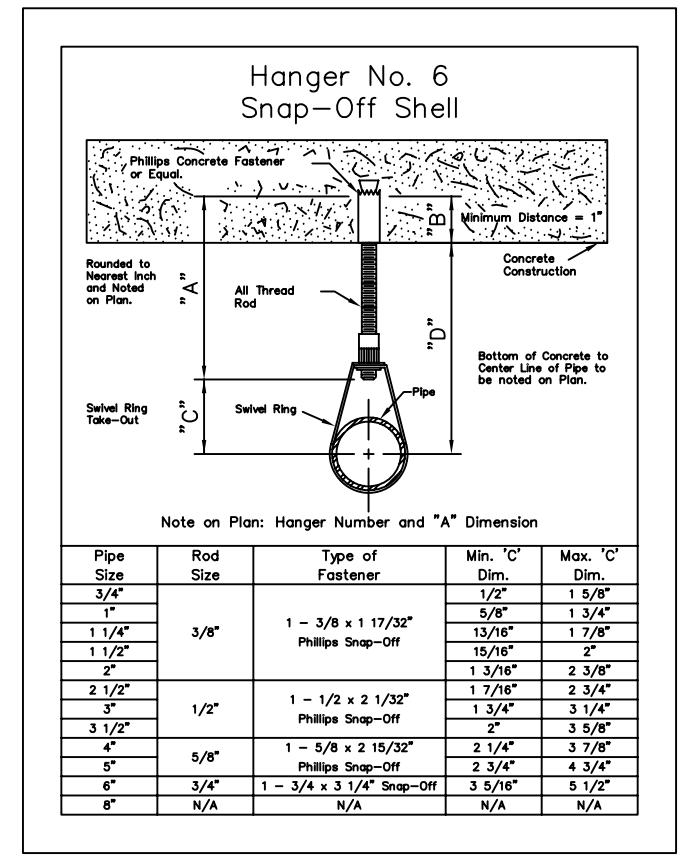
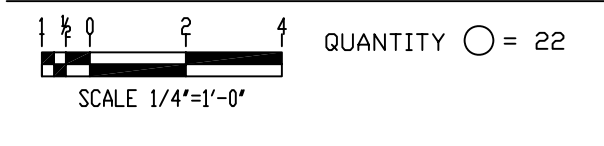
| HYDRAULIC DESIGN DATA | |
|------------------------------------|-----------|
| System # & Area | #1 - #2 |
| No. of Sprinklers | 9 |
| Density | 0.15 GPM |
| Designed Area | AREA |
| Hose Allowance | 250 GPM |
| Water Flow Rate | 451 GPM |
| Residual Pressure at Base of Riser | 83 PSI |
| Safety Factor at Base of Riser | 23.96 PSI |



GROUND FLOOR CONTROL VALVE



GROUND FLOOR FIRE PROTECTION



| Hanger No. 6 Snap-Off Shell | |
|-----------------------------|------------------|
| Pipe Size | 1/2" |
| Rod Size | 3/8" |
| Type of Connector | 1 - 3/8 x 1 1/2" |
| Min. "L" Dimension | 12" |
| Max. "L" Dimension | 12" |
| Min. "W" Dimension | 12" |
| Max. "W" Dimension | 12" |
| Min. "H" Dimension | 12" |
| Max. "H" Dimension | 12" |
| Min. "D" Dimension | 12" |
| Max. "D" Dimension | 12" |

| REVISIONS | NOTES | SPRINKLER TYPE | IDENTIFICATION NO. | MFG. | ESC. | MODEL | FINISH | ORIFICE | TEMP. | SYMBOL | QUANT. |
|-------------------------------|---|----------------------------|--------------------|------|------|--------|--------|---------|-------|--------|--------|
| | K=5.6 UPRIGHT SPRINKLER COVERAGE: 15'x15' | QUICK RESP. UPRIGHT K= 5.6 | TY3131 | TYCO | N/A | TY-FRB | BRASS | 1/2" | 155° | ○ | 24 |
| | K=4.9 PENDANT SPRINKLER COVERAGE: 16'x16' | QUICK RESP. PENDANT K= 4.9 | TY2234 | TYCO | N/A | LFII | WHITE | 1/2" | 155° | ◌ | 28 |
| | K=4.4 DRY SPRINKLER COVERAGE: 14'x14' | DRY SIDEWALL K= 4.4 | TY2335 | TYCO | N/A | LFII | BRASS | 1/2" | 155° | ◌ | 2 |
| TOTAL SPRINKLERS THIS DRAWING | | | | | | | | | | | 54 |

| STANDARD SYMBOLS | |
|------------------|-----------------------|
| ○ | POST INDICATOR VALVE |
| ◌ | KEY VALVE |
| ◆ | FIRE HYDRANT |
| ◌ | FIRE DEPT. CONNECTION |
| ◌ | O.S. & Y GATE VALVE |
| ◌ | SWING CHECK VALVE |
| ◌ | NEW UNDERGROUND |
| ◌ | EXIST UNDERGROUND |

| STANDARD SYMBOLS | |
|------------------|-----------------------------|
| ◌ | ALARM CHECK VALVE |
| ◌ | RISER W/ALARM VALVE |
| ◌ | RISER W/DRY VALVE |
| ◌ | RISER W/ELEC. FLOW SWITCH |
| ◌ | RISER W/DELUGE VALVE |
| ◌ | WATER MOTOR BELL |
| ◌ | ELECTRIC BELL |
| ◌ | FLUSH FIRE DEPT. CONNECTION |

| INSPECTIONS | |
|--------------------------------------|--|
| 1. | |
| 2. | |
| 3. | |
| 4. | |
| 5. | |
| RESPONSIBLE MANAGING SUPERVISOR #348 | |
| CONTRACTOR LICENSE #295 | |

RESIDENCE HOUSING
 133 YORK STREET
 PORTLAND, MAINE 04101

FIRE PROTECTION PLAN

FREEDOM FIRE PROTECTION, INC.
 209 QUAKER RIDGE ROAD
 CASCO, MAINE 04015

| | |
|-----------|-----------|
| JOB No. | M0178 |
| DATE | 7/22/14 |
| DRAWN BY | MJN |
| SCALE | AS NOTED |
| SHEET No. | FP-2 of 3 |