

AUG 1, 8 2006

RECEIVED

ROOM FINISH SCHEDULE

NUMBER	ROOM NAME	FLOOR/BASE	WALLS				CEILING		REMARKS
			NORTH	SOUTH	EAST	WEST	MATERIAL	HEIGHT	
10	FAMILY WAITING	PTD	PTD	PTD	PTD	PTD	PTD	1	
11	RECEPTION	EXIST/RB	PTD	PTD	PTD	PTD	PTD	1	
12	ENTRY	EXIST/RB	PTD	PTD	PTD	PTD	PTD	1	
13	VESTIBULE	EXIST/RB	PTD	PTD	PTD	PTD	ACT	1	
14	OFFICE	EXIST/RB	PTD	PTD	PTD	PTD	EXIST		
15	OFFICE	EXIST/RB	PTD	PTD	PTD	PTD	EXIST		
16	CORRIDOR	EXIST/RB	PTD	PTD	PTD	PTD	EXIST		
17	TOILET	SVF/SVF	PTD	PTD	PTD	PTD	EXIST	2	
17	ENTRY/CUBBIES	SVF/SVF	PTD	PTD	PTD	PTD	EXIST	2	

① PATCH FLOOR & CEILING AS REQUIRED. ② EXTEND SEAMLESS FLOOR UP WALLS 6".

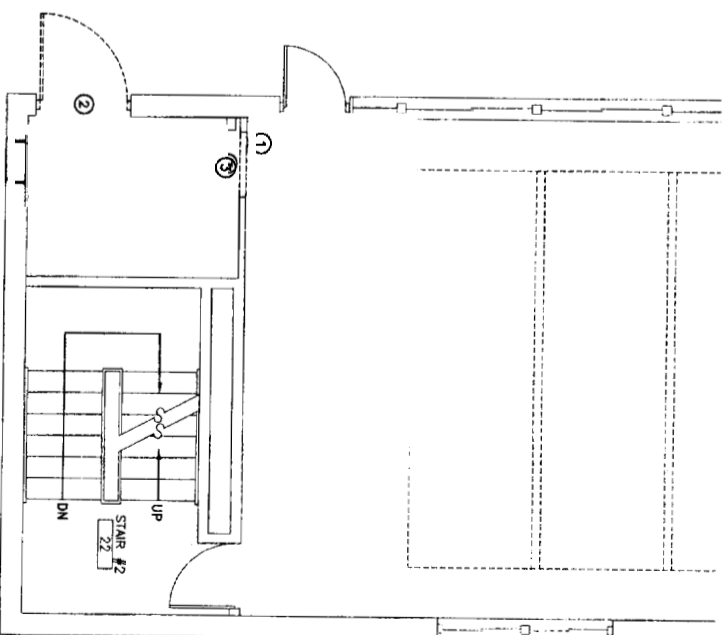
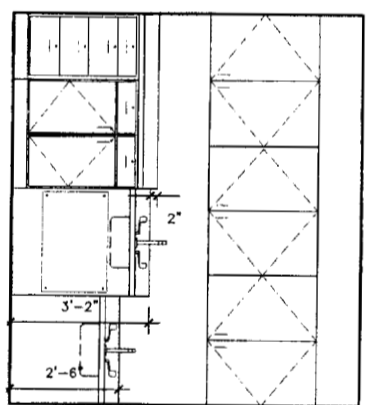
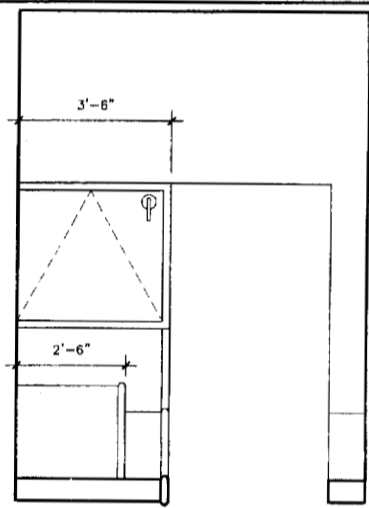
K1 FINISH SCHEDULE

ROOM NUMBER	ROOM NAME	FLOOR/BASE	WALLS				CEILING		REMARKS
			NORTH	SOUTH	EAST	WEST	MATERIAL	HEIGHT	
18	ENTRY/CUBBIES	SVF/SVF	PTD	PTD	PTD	PTD	PTD	2	
19	INFANT/TODDLER	EXIST/RB	PTD	PTD	PTD	PTD	EXIST		
20	CONFERENCE	EXIST/RB	PTD	PTD	PTD	PTD	EXIST		
21	OFFICE	VCT/RB	PTD	PTD	PTD	PTD	EXIST		
22	STAIR	PTD	PTD	PTD	PTD	PTD	EXIST		
23	CAFETERIA	EXIST/RB	PTD	PTD	PTD	PTD	EXIST	NO WORK	
24	CORRIDOR	EXIST/RB	PTD	PTD	PTD	PTD	EXIST		
25	CORRIDOR	EXIST/RB	PTD	PTD	PTD	PTD	EXIST		
26	TOILET	SVF/SVF	PTD	PTD	PTD	PTD	EXIST	2	

ROOM FINISH SCHEDULE

- REMOVAL NOTES:
- ① REMOVE SCHOOL BELL AND EXIT SIGN
  - ② REMOVE EXISTING DOOR AND FRAME
  - ③ REMOVE PORTION OF PARTITION FOR INSTALLATION OF NEW DOOR.

K6 FINISH SCHEDULE



G6 RECEPTION A

G9 KITCHEN

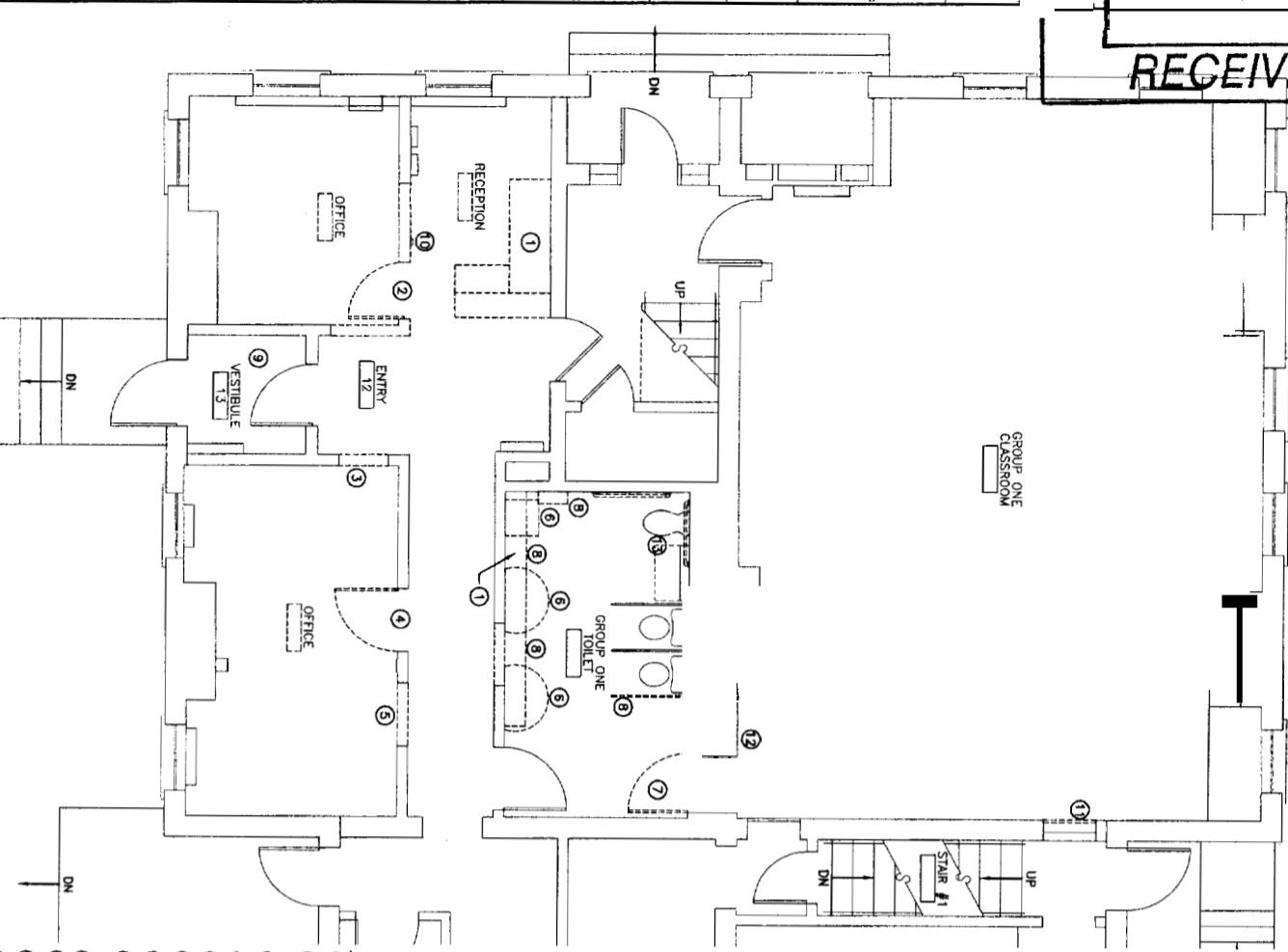
G12 CAFETERIA REMOVALS PLAN

D6 RECEPTION B

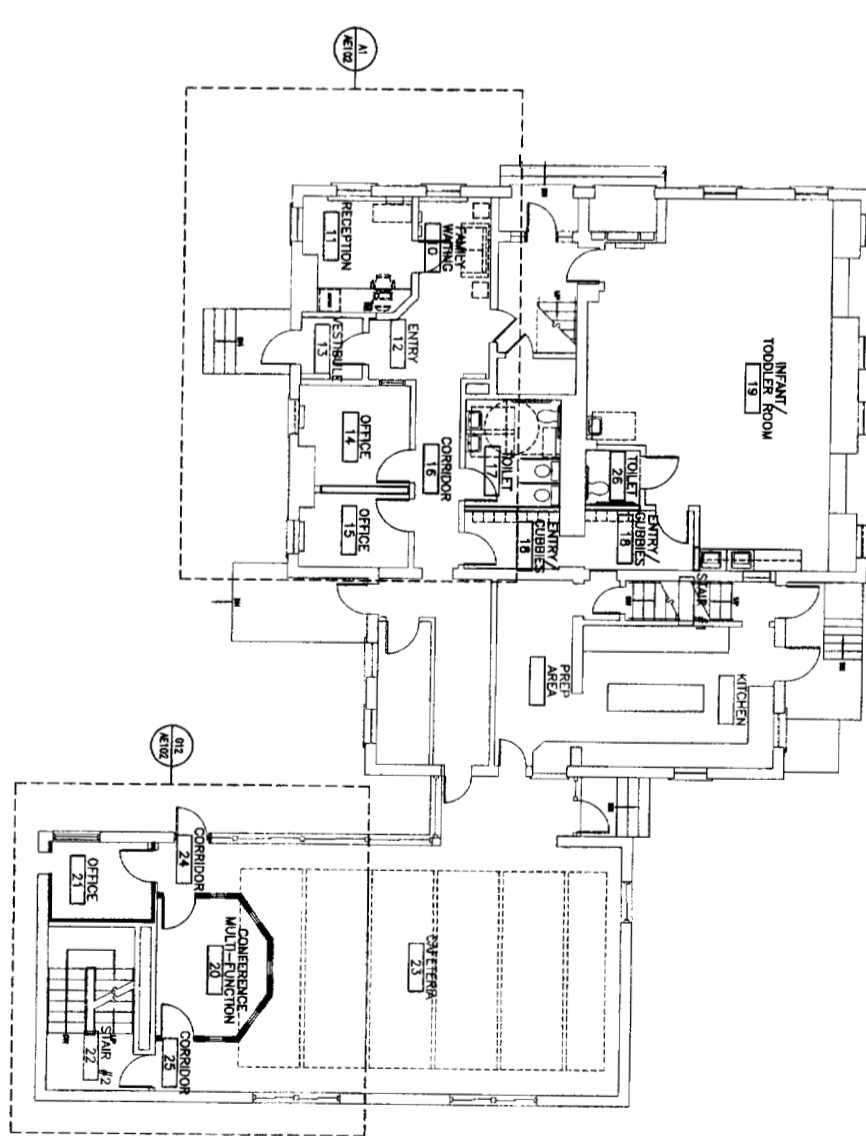
REMOVAL NOTES:

- ① REMOVE EXISTING CASEWORK.
- ② REMOVE EXISTING DOOR AND PORTION OF EXISTING WALL. COORDINATE WITH NEW CASEWORK AND GLAZING FOR EXTENTS.
- ③ REMOVE PORTION OF PARTITION FOR INSTALLATION OF NEW WINDOW.
- ④ REMOVE AND SALVAGE EXISTING DOOR.
- ⑤ REMOVE PORTION OF PARTITION FOR INSTALLATION OF NEW DOOR.
- ⑥ REMOVE EXISTING PLUMBING.
- ⑦ REMOVE EXISTING DOOR FRAME TO REMAIN.
- ⑧ REMOVE MISC. ITEMS, PAPER TOWEL DISPENSER, TOILET PARTITIONS, SHELVES AND RETURN TO OWNER.
- ⑨ REMOVE EXISTING CEILING AND LIGHTING.
- ⑩ RELOCATE EXISTING FIRE ALARM PULL STATION TO OFFICE.
- ⑪ REMOVE DOOR AND FRAME.
- ⑫ RELOCATE EXISTING ELECTRICAL PANEL TO ALLOW SPACE FOR CUBBIES (IF REQUIRED).
- ⑬ REMOVE EXISTING CHILD TOILET FOR RE-USE.

A1 MAIN ENTRANCE REMOVALS PLAN



A9 FIRST FLOOR PLAN

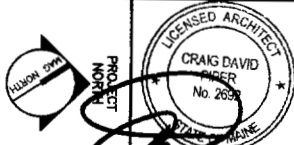


CATHERINE MORRILL DAY NURSERY

96 DANFORTH STREET, PORTLAND, MAINE

CURRENT ISSUE STATUS:

ISSUED FOR PERMIT  
6-06-06



ARCHITECTURE ENGINEERING PLANNING

SMART  
144 Fore Street/P.O. Box 518  
Portland, Maine 04104  
tel. (207) 772-3846  
fax. (207) 772-1070



RECEIVED

AUG 1 8 2006

SHEET No. AE101  
FACILITY PLAN & REMOVALS PLAN

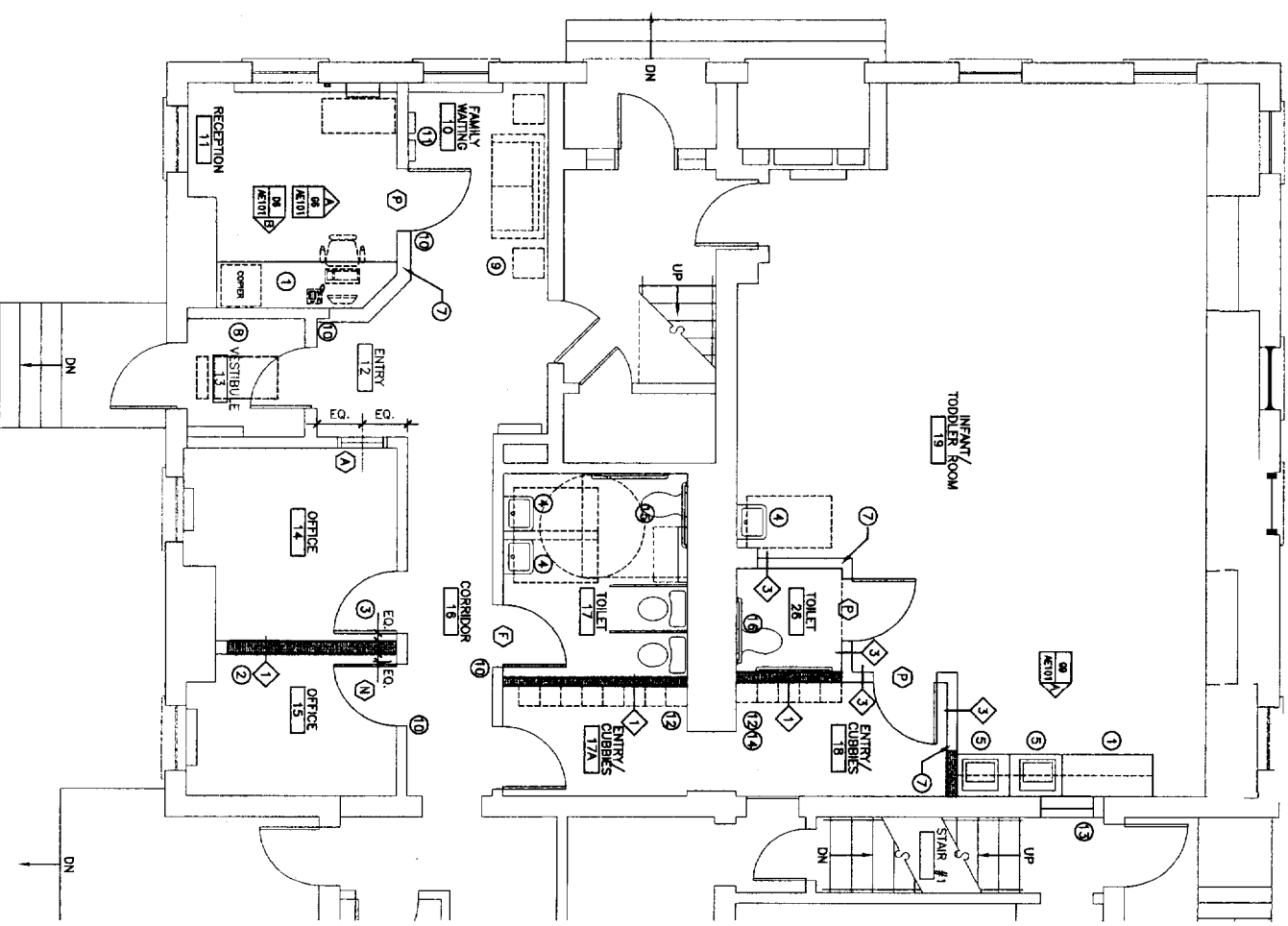
**KEY NOTES:**

- 1 NEW CASEWORK TO BE INSTALLED.
- 2 USE EXISTING SOFFIT TO LOCATE NEW WALL.
- 3 MODIFY EXISTING DOOR TO REVERSE SWING OR NEW DOOR.
- 4 PROVIDE NEW ADA SINK WITH HANDS FREE FA SINK.
- 5 PROVIDE NEW STAINLESS STEEL SINGLE BOWL SINK.
- 6 PROVIDE OPENING FOR AC UNIT. PROVIDE E R COVER.
- 7 NEW PLUM CAP. SEE DETAIL ON A13/AE102
- 8 PROVIDE NEW CEILING MOUNTED CABINET UNIT HEATER.
- 9 PROPOSE NEW FURNITURE.
- 10 PATCH EXISTING WALLS TO MATCH EXISTING, WAINSCOTTING AND MIRRORS.
- 11 LOCATE AS CLOSE TO FIRE ALARM ANNUNCIATOR PANELS AS POSSIBLE.
- 12 EXISTING CUBBIES RELOCATED.
- 13 INFILL AT OLD DOOR.
- 14 MAINTAIN CODE CLEARANCE FOR ELECTRICAL PANEL.
- 15 NEW ADULT TOILET.
- 16 RELOCATED CHILD TOILET.

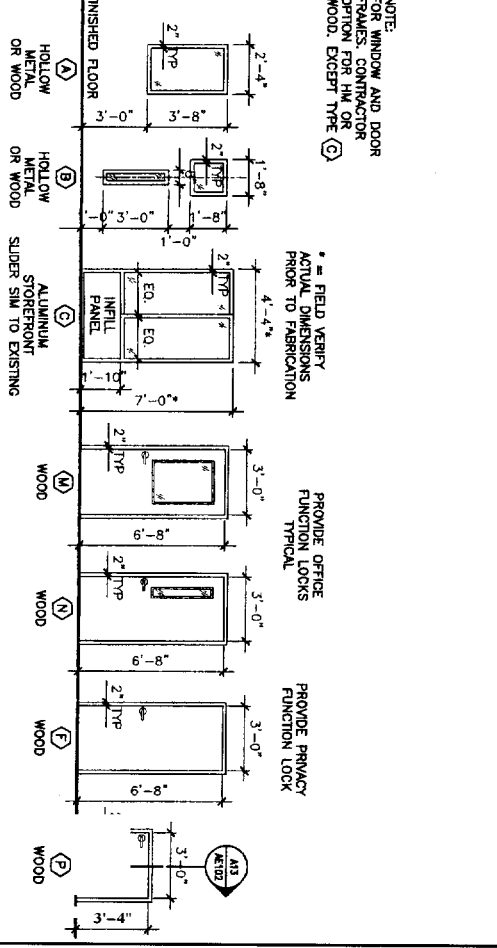
**PARTITION LEGEND**

E	MATCH EXISTING ADJACENT CONSTRUCTION MATERIALS AND FINISHES WITH ANY FIRE RISKING THE EXISTING PARTITION MAINFINS.	
1	3-3/8" METAL STUDS @ 16" O.C. TO DECK. (1) LAYER	
2	5/8" GMB TO DECK EACH SIDE. BATT INSULATION.	
3	(1) LAYER 5/8" GMB TO 6" ABOVE CEILING ON 7/8" METAL FURRING CHANNELS @ 16" O.C.	
4	3-3/8" METAL STUDS @ 16" O.C. TO 42" AFF. (1) LAYER	
5	5/8" GMB TO 42" HIGH. PARTIAL HEIGHT WALL WITH PAINTED WOOD CAP	

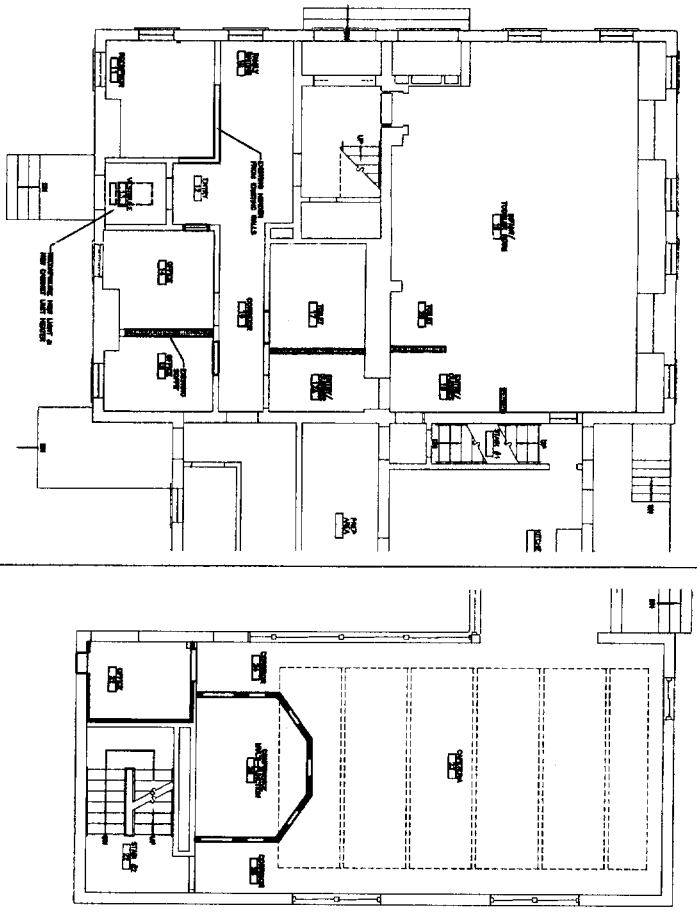
**A1 MAIN ENTRANCE PLAN**



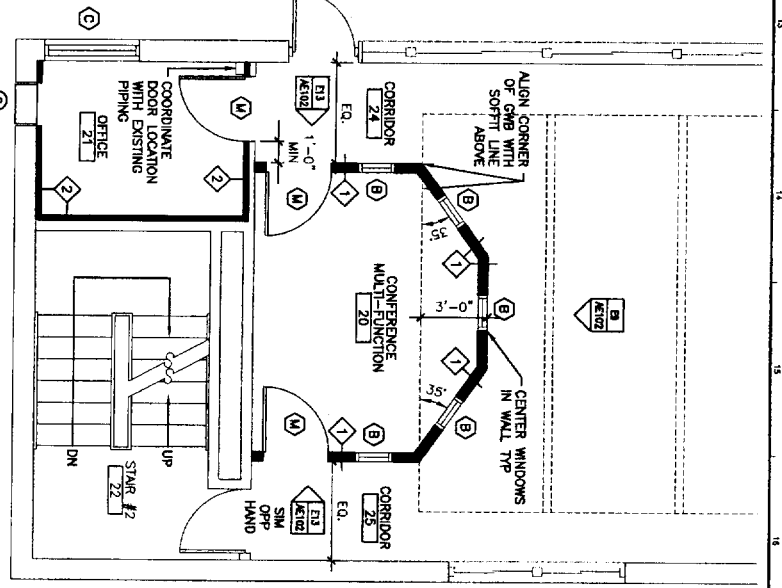
**A9 WINDOW AND DOOR TYPES**



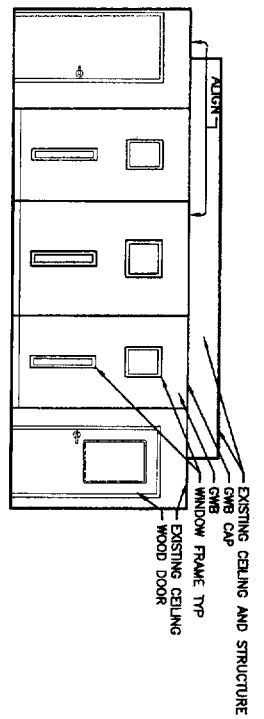
**G9 REFLECTED CEILING PLAN**



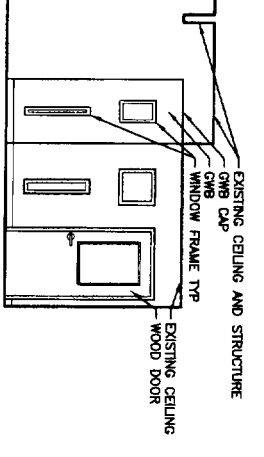
**G13 CAFETERIA PLAN**



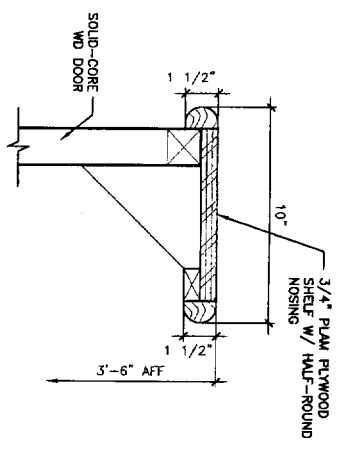
**E9 INTERIOR ELEVATION**



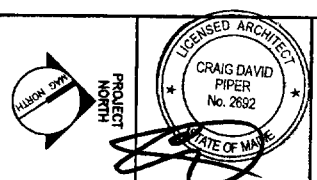
**E13 INTERIOR ELEVATION**



**A13 HALF DOOR DETAIL**



PROJECT TITLE: **CATHERINE MORRILL DAY NURSERY**  
 96 DANFORTH STREET, PORTLAND, MAINE  
 CURRENT ISSUE STATUS: **ISSUED FOR PERMIT 6-08-06**



ARCHITECTURE ENGINEERING PLANNING  
 SMART  
 144 Fore Street/P.O. Box 618  
 Portland, Maine 04104  
 tel. (207) 772-3846  
 fax. (207) 772-1070



REV	DESCRIPTION	DATE

GRAPHIC SCALE: 0" = 1'-0"

SCALE: AS NOTED

PROJECT MANAGER: CIP

AC/DRAWN BY: CIP

DATE OF RECORD: CIP

DOO FILE: AE102-CADN

PROJECT NO.: CADN

DATE:  

SHEET TITLE: **FLOOR AND REFLECTED CEILING PLANS**

SHEET NO.: **AE102**