

RENOVATIONS TO  
31-33 PARK STREET

Revisions



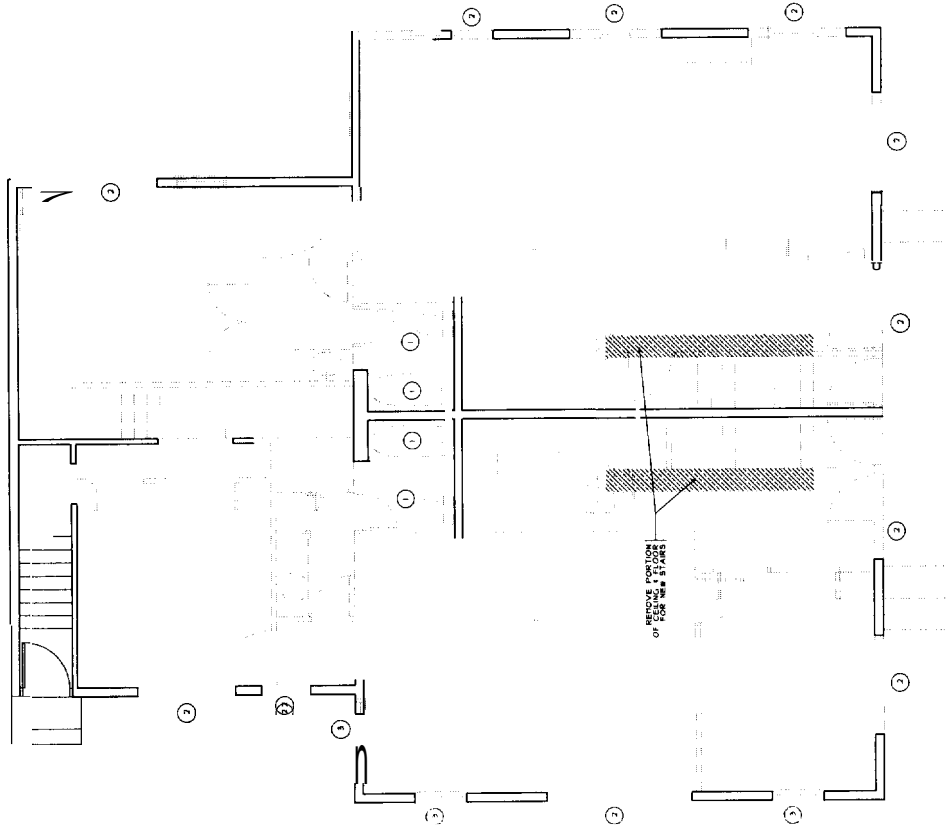
117 Dunbar Street  
Boston, MA 02116  
Phone: 617.552.3378  
Fax: 617.552.3379  
www.emol.com

Consultants  
Landscape Architect  
Civil/Structural  
Structural Engineer

JOB NO.:  
DATE: APRIL 2003  
SCALE: 1/4" = 1'-0"  
DRAWN BY: CD  
CHECKED BY: C

Demolition  
DEMOLITION PLANS

D1.1



DEMOLITION PLANS ARE PRELIMINARY  
COORDINATE ALL WORK WITH FINAL  
DRAWING SET.

- GENERAL DEMOLITION NOTES**
1. THE DRAWING SHOWS GENERAL ITEMS TO BE DEMOLISHED. ITEMS TO BE DEMOLISHED SHALL BE IDENTIFIED BY KEYNOTE.
  2. DEMOLITION SHALL BE ACCORDING TO THE DEMOLITION SPECIFICATIONS AND THE DEMOLITION CONTRACT DOCUMENTS.
  3. DEMOLITION SHALL BE ACCORDING TO THE DEMOLITION CONTRACT DOCUMENTS AND THE DEMOLITION CONTRACT DOCUMENTS.
  4. DEMOLITION SHALL BE ACCORDING TO THE DEMOLITION CONTRACT DOCUMENTS AND THE DEMOLITION CONTRACT DOCUMENTS.
  5. SEE STRUCTURAL DRAWINGS FOR ADDITIONAL DEMOLITION REQUIREMENTS.

- KEYED NOTES**
1. BUILDERS OPTION WHETHER TO REMOVE FIXTURES.
  2. NEW FIXTURES HAVE NOT BEEN RELOCATED.
  3. COORDINATE WITH EXTERIOR ELEVATIONS AND WINDOW AND DOOR SCHEDULES.
  4. REMOVE EXISTING WINDOW S.O. TO BE REUSED IN VERTICAL DIMENSION.

- DEMOLITION LEGEND**
- CONSTRUCTION TO BE REMOVED
  - CONSTRUCTION TO REMAIN
  - ▨ AREA OF CEILING TO BE REMOVED

2  
D1.1  
EMOL  
2003

**RENOVATIONS TO  
31-33 PARK STREET**

Revisions



15 Denham Street  
 Parkville, MA 01906  
 Phone: 508.271.5474  
 Fax: 508.271.5474  
 Email: info@pjfconsultants.com

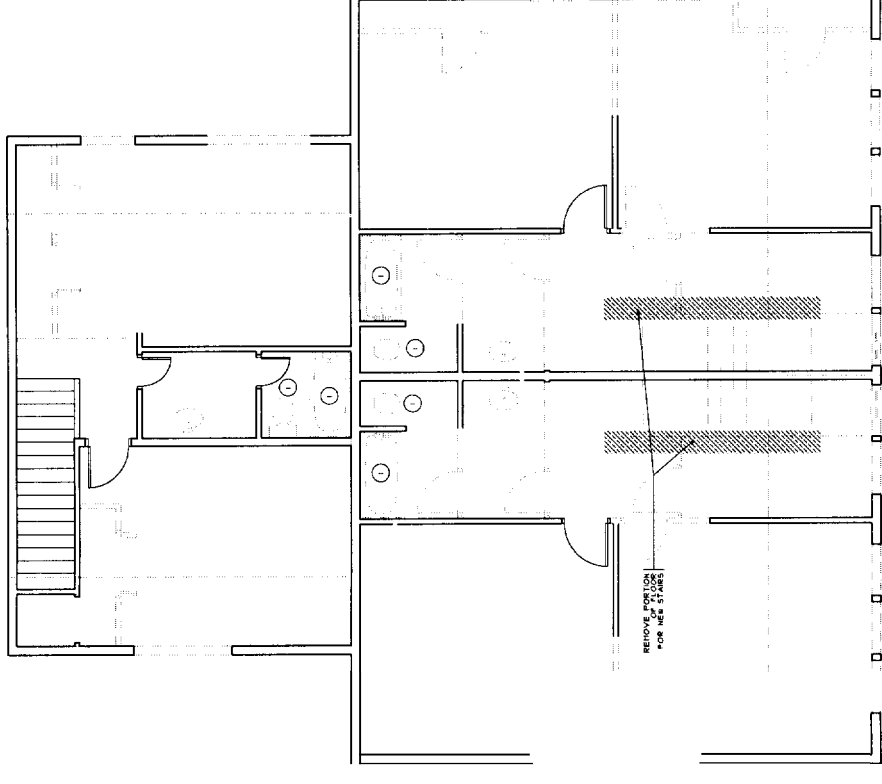
Consultants

Lead Architect:  
 Carroll Associates  
 Structural Engineer

JOB No.:  
 Date: JUNE 5, 2023  
 Scale: 1/4" = 1'-0"  
 Drawn by: [Redacted]  
 Checked by: [Redacted]

**Sheet No.  
DEMOLITION PLANS**

**D1.2**



1  
D1.2

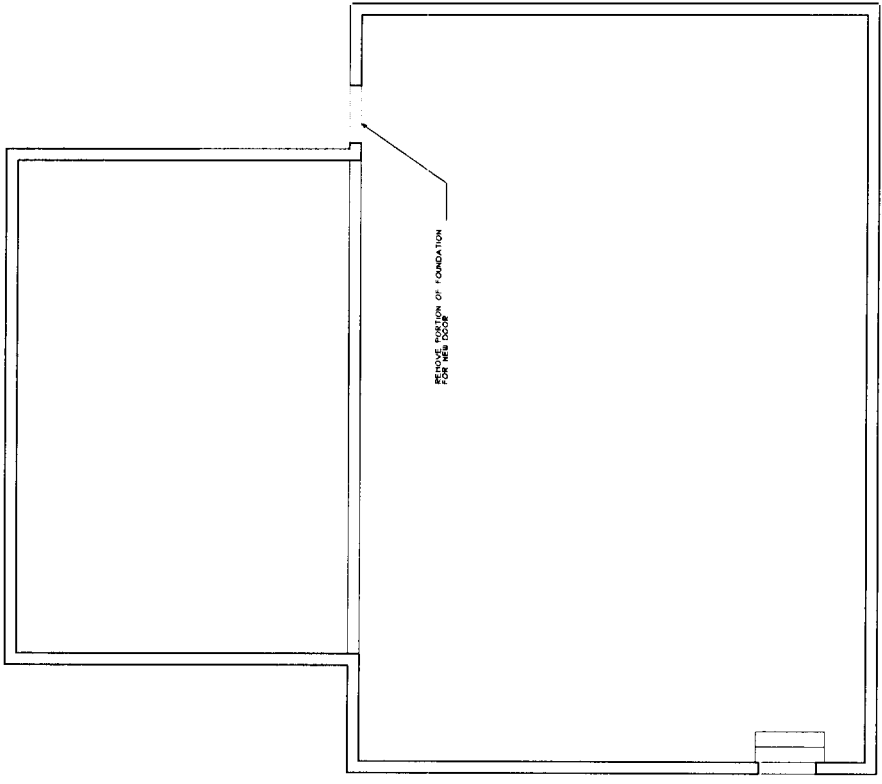
**DEMOLITION PLANS ARE PRELIMINARY  
COORDINATE ALL WORK WITH FINAL  
DRAWING SET.**

**KEYED NOTES**

1. BALDERS OPTION SETS TO REMOVE FLOOR  
 2. REMOVE PORTION OF EXTERIOR WALL FOR NEW WINDOW DOOR  
 3. COORDINATE WITH EXTERIOR ELEVATIONS AND WINDOW AND DOOR SCHED  
 4. AS APPLICABLE, WITHING WINDOW E.G. TO BE RELATED IN VERTICAL DIRECTION

**DEMOLITION LEGEND**

--- CONSTRUCTION TO BE REMOVED  
 --- CONSTRUCTION TO REMAIN  
 [Hatched Box] ARE TO BE REMOVED  
 [Hatched Box] TO BE REMOVED



2  
D1.2