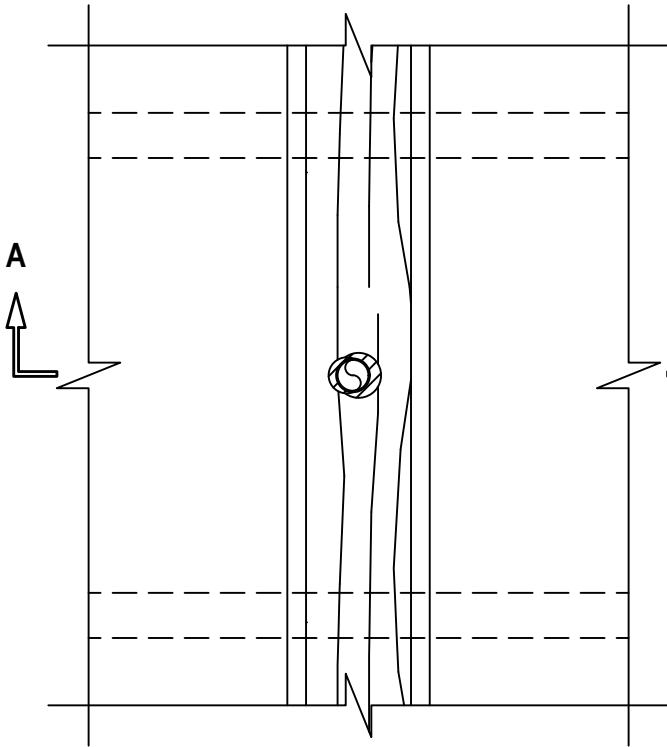


CH

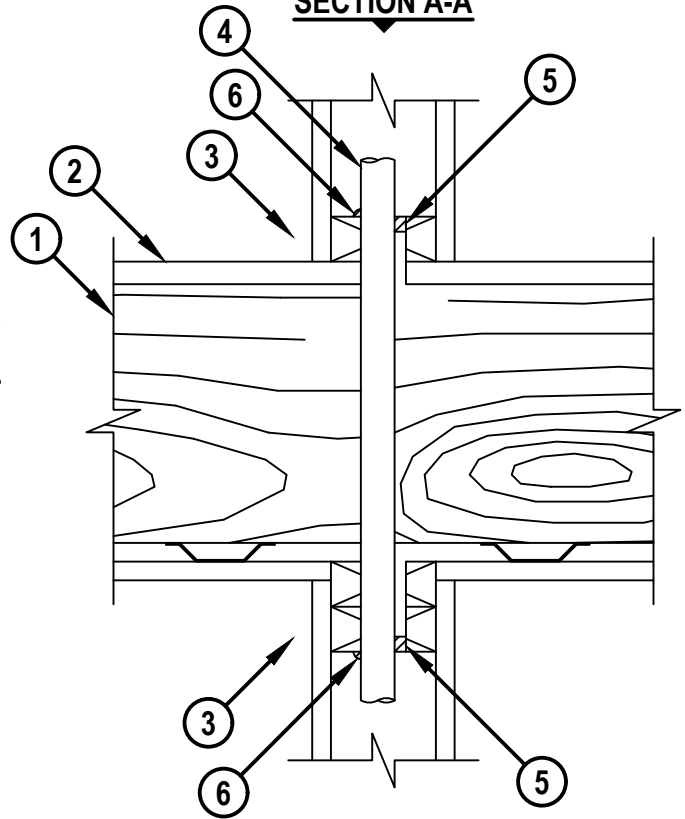
ENGINEERING JUDGMENT FIRESTOP DETAIL

PROJECT : 135 YORK ST PORTLAND, ME
CONTRACTOR : NORTHEAST FIRESTOPPING SOLUTIONS
F-RATING = 1-HR. (SEE NOTE NO. 3 BELOW)

TOP VIEW



SECTION A-A



HILTI, Inc.
Plano, Texas USA (800) 879-8000

Designed by

Sheet 1 of 2

Scale 5/32" = 1"

Date Apr. 11, 2019

Drawing No.

328819a

Saving Lives through Innovation and Education

ENGINEERING JUDGMENT FIRESTOP DETAIL

PROJECT : 135 YORK ST PORTLAND, ME
 CONTRACTOR : NORTHEAST FIRESTOPPING SOLUTIONS
 F-RATING = 1-HR. (SEE NOTE NO. 3 BELOW)

1. WOOD FLOOR/CEILING ASSEMBLY (UL CLASSIFIED L502 SERIES) (1-HR. FIRE-RATING).
2. LUMBER OR PLYWOOD SUBFLOOR WITH FINISH FLOOR OF LUMBER, PLYWOOD, OR FLOOR TOPPING MIXTURE.
3. [OPTIONAL] GYPSUM WALL ASSEMBLY (UL CLASSIFIED U300 SERIES) (1-HR. OR 2-HR. FIRE-RATING) (2-HR. SHOWN) CONSISTING OF NOMINAL 2" x 4" LUMBER/SPLIT-PLATES AND STUDS.
4. MAXIMUM 1" NOMINAL DIAMETER CROSS-LINKED POLYETHYLENE (PEX) SDR 9 TUBING (CLOSED OR VENTED PIPING SYSTEM).
5. MINIMUM 1/2" DEPTH HILTI FS-ONE MAX INTUMESCENT FIRESTOP SEALANT FLUSH WITH TOP SURFACE OF FLOOR OR SOLE PLATE OF CHASE WALL, AND FLUSH WITH BOTTOM SURFACE OF CEILING OR LOWER TOP PLATE.
6. MINIMUM 1/4" BEAD HILTI FS-ONE MAX INTUMESCENT FIRESTOP SEALANT APPLIED AT POINT OF CONTACT.

NOTES : 1. MAXIMUM DIAMETER OF OPENING = 1-1/2".
 2. ANNULAR SPACE = MINIMUM 0", MAXIMUM 1/2".
 3. FIRE-RATING OF ASSEMBLY IS DEPENDENT UPON THE PERFORMANCE OF GYPSUM WALL ASSEMBLY UNDER FIRE CONDITIONS.

THIS ENGINEERING JUDGMENT REPRESENTS A FIRESTOP SYSTEM THAT WOULD BE EXPECTED TO PASS THE STATED RATINGS IF TESTED.
 (REFERENCE : UL SYSTEM NO. F-C-2081)



Hilti Firestop Systems

HILTI, Inc.
 Plano, Texas USA (800) 879-8000

Designed by

Jaeger

Sheet 2 of 2

Scale -

Date Apr. 11, 2019

Drawing No.

328819a

Saving Lives through Innovation and Education