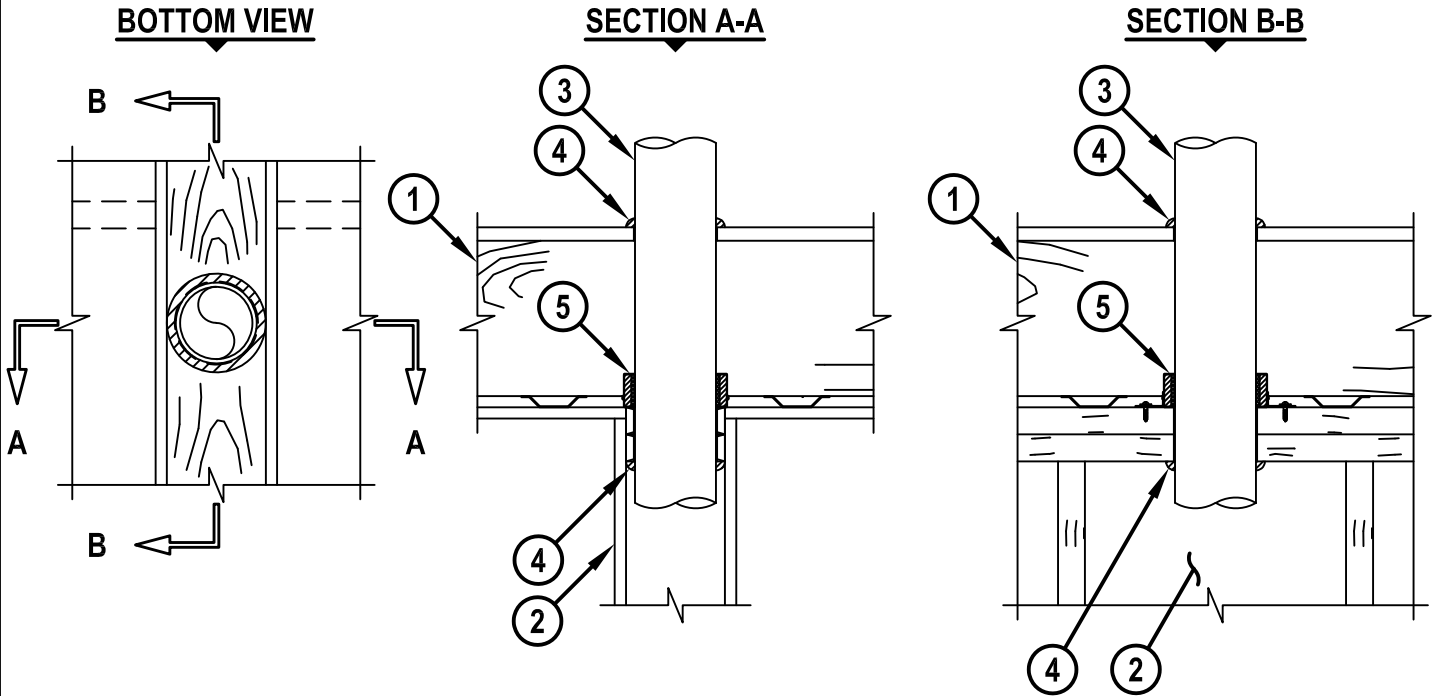


ENGINEERING JUDGMENT FIRESTOP DETAIL

PROJECT : 135 YORK ST PORTLAND, ME
 CONTRACTOR : NORTHEAST FIRESTOPPING SOLUTIONS
 F-RATING = 1-HR. (SEE NOTE NO. 4 BELOW)



1. WOOD FLOOR/CEILING ASSEMBLY (UL CLASSIFIED L502 SERIES) WITH RESILIENT CHANNELS (MAX. 2-1/2" WIDE) (1-HR. FIRE-RATING).
2. GYPSUM WALL ASSEMBLY TO INCLUDE THE FOLLOWING CONSTRUCTION FEATURES :
 - A. DOUBLE TOP/SPLIT-PLATE AND STUDS TO CONSIST OF NOMINAL 2" x 4" OR 2" x 6" LUMBER.
 - B. MINIMUM 1/2" THICK RATED OR NON-RATED GYPSUM WALLBOARD.
3. PENETRATING ITEM TO BE ONE OF THE FOLLOWING :
 - A. MAXIMUM 4" NOMINAL DIAMETER PVC PLASTIC PIPE (CELLULAR OR SOLID CORE).
 - B. MAXIMUM 4" NOMINAL DIAMETER CPVC PLASTIC PIPE (CLOSED PIPING SYSTEM ONLY).
4. MINIMUM 1/2" BEAD HILTI FS-ONE MAX INTUMESCENT FIRESTOP SEALANT.
5. HILTI CP 643N FIRESTOP COLLAR SECURED TO THE TOP SIDE OF TOP PLATE WITH TWO ANCHOR TABS. ANCHOR TABS SECURED WITH 3/4" WOOD SCREWS AND WASHERS.

NOTES : 1. DIAMETER OF OPENING = MAXIMUM 1/8" LARGER THAN OUTSIDE DIAMETER OF PENETRANT.
 2. ANNULAR SPACE = MINIMUM 1/16".
 3. CLOSED OR VENTED ASSEMBLY (PVC = SCH 40; CPVC = SDR 13.5).
 4. FIRE-RATING OF ASSEMBLY IS DEPENDENT UPON THE PERFORMANCE OF GYPSUM WALL ASSEMBLY UNDER FIRE CONDITIONS.

THIS ENGINEERING JUDGMENT REPRESENTS A FIRESTOP SYSTEM THAT WOULD BE EXPECTED TO PASS THE STATED RATINGS IF TESTED.
 (REFERENCE : UL SYSTEM NO. F-C-2404)



HILTI, Inc.
 Plano, Texas USA (800) 879-8000
 Designed by *Jaeger*

Sheet	1 of 1
Scale	3/32" = 1"
Date	Apr. 11, 2019

Drawing No.
328818a