

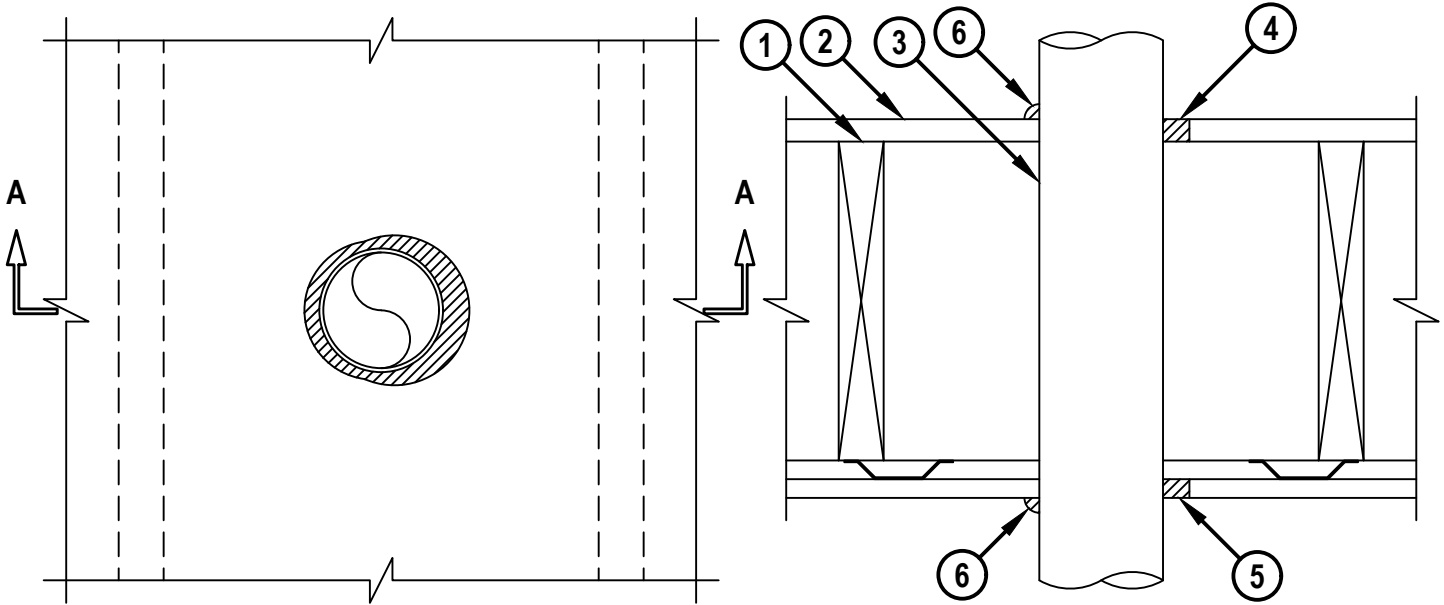
CH

ENGINEERING JUDGMENT FIRESTOP DETAIL

PROJECT : 135 YORK ST PORTLAND, ME
CONTRACTOR : NORTHEAST FIRESTOPPING SOLUTIONS
F-RATING = 1-HR. (SEE NOTE NO. 4 BELOW)

TOP VIEW

SECTION A-A



HILTI, Inc.
Plano, Texas USA (800) 879-8000
Designed by *Jaeger*

Sheet 1 of 2
Scale 5/32" = 1"
Date Apr. 11, 2019

Drawing No. **328817a**

Saving Lives through Innovation and Education

ENGINEERING JUDGMENT FIRESTOP DETAIL

PROJECT : 135 YORK ST PORTLAND, ME
 CONTRACTOR : NORTHEAST FIRESTOPPING SOLUTIONS
 F-RATING = 1-HR. (SEE NOTE NO. 4 BELOW)

1. WOOD FLOOR/CEILING ASSEMBLY (UL/cUL CLASSIFIED L502 SERIES) WITH RESILIENT CHANNELS (MAX. 1/2" WIDE)(1-HR. FIRE-RATING).
2. LUMBER OR PLYWOOD SUBFLOOR WITH FINISH FLOOR OF LUMBER, PLYWOOD, OR FLOOR TOPPING MIXTURE.
3. MAXIMUM 4" NOMINAL DIAMETER STEEL /LALLY COLUMN.
4. MINIMUM 3/4" DEPTH HILTI CP 606 FLEXIBLE FIRESTOP SEALANT OR HILTI FS-ONE MAX INTUMESCENT FIRESTOP SEALANT.
5. MINIMUM 5/8" DEPTH HILTI CP 606 FLEXIBLE FIRESTOP SEALANT OR HILTI FS-ONE MAX INTUMESCENT FIRESTOP SEALANT.
6. MINIMUM 1/2" BEAD HILTI CP 606 FLEXIBLE FIRESTOP SEALANT OR HILTI FS-ONE MAX INTUMESCENT FIRESTOP SEALANT AT POINT OF CONTACT.

NOTES :

1. MAXIMUM DIAMETER OF OPENING = 5".
2. ANNULAR SPACE = MINIMUM 0", MAXIMUM 7/8".
3. CHASE WALL [NOT SHOWN, OPTIONAL] - PENETRATING ITEM MAY BE ROUTED THROUGH A FIRE-RATED OR NON-RATED SINGLE, DOUBLE, OR STAGGERED WOOD STUD/GYPSUM CHASE WALL ASSEMBLY CONSISTING OF NOMINAL 2" x 6" OR PARALLEL 2" x 4" LUMBER/SPLIT-PLATES AND STUDS.
4. FIRE-RATING OF ASSEMBLY IS DEPENDENT UPON THE PERFORMANCE OF GYPSUM WALL ASSEMBLY AND COLUMN UNDER FIRE CONDITIONS.

THIS ENGINEERING JUDGMENT REPRESENTS A FIRESTOP SYSTEM THAT WOULD BE EXPECTED TO PASS THE STATED RATINGS IF TESTED.
 (REFERENCE : UL/cUL SYSTEM NO. F-C-1106 & F-C-7130)



HILTI, Inc.
 Plano, Texas USA (800) 879-8000
 Designed by


Sheet	2 of 2
Scale	-
Date	Apr. 11, 2019

Drawing No.

328817a