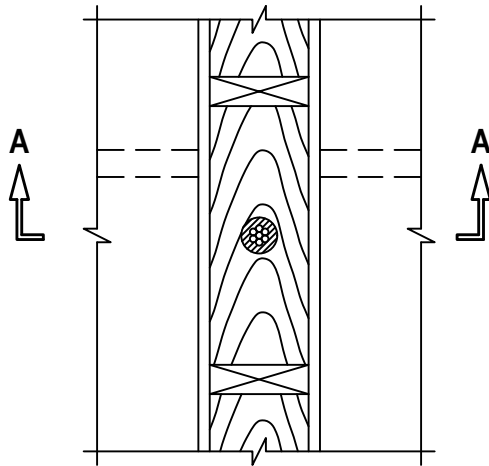


CH

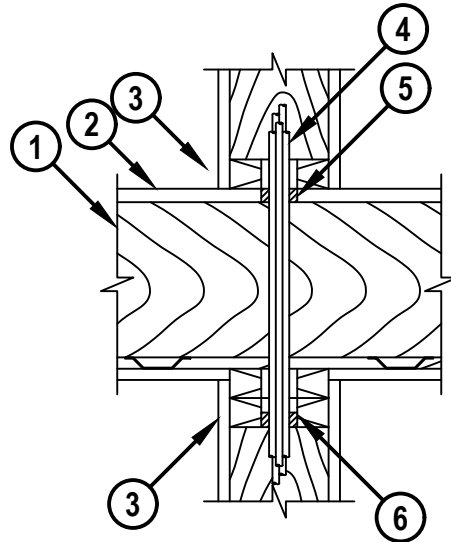
ENGINEERING JUDGMENT FIRESTOP DETAIL

PROJECT : 135 YORK ST PORTLAND, ME
CONTRACTOR : NORTHEAST FIRESTOPPING SOLUTIONS
F-RATING = 1-HR. (SEE NOTE NO. 3 BELOW)

TOP VIEW



SECTION A-A



Hilti Firestop Systems

HILTI, Inc.
Plano, Texas USA (800) 879-8000

Designed by

Sheet 1 of 2

Scale 3/32" = 1"

Date Apr. 11, 2019

Drawing No.

328815a

Saving Lives through Innovation and Education

ENGINEERING JUDGMENT FIRESTOP DETAIL

PROJECT : 135 YORK ST PORTLAND, ME
 CONTRACTOR : NORTHEAST FIRESTOPPING SOLUTIONS
 F-RATING = 1-HR. (SEE NOTE NO. 3 BELOW)

1. WOOD FLOOR/CEILING ASSEMBLY (UL/cUL CLASSIFIED L502 SERIES) WITH RESILIENT CHANNELS (MAX. 1/2" WIDE) (1-HR. FIRE-RATING).
2. LUMBER OR PLYWOOD SUBFLOOR WITH FINISH FLOOR OF LUMBER, PLYWOOD, OR FLOOR TOPPING MIXTURE.
3. [OPTIONAL] FIRE-RATED OR NON-RATED SINGLE, DOUBLE, OR STAGGERED WOOD STUD/GYPSUM CHASE WALL CONSISTING OF NOMINAL 2" x 6", OR PARALLEL 2" x 4" LUMBER/SPLIT- PLATES AND STUDS.
4. CABLE BUNDLE MAY CONSIST OF ANY OF THE FOLLOWING :
 - A. RG 59 COAXIAL CABLE WITH PVC JACKET.
 - B. MAXIMUM 8/C NO. 22 AWG TELEPHONE CABLE WITH PVC JACKET.
 - C. MAXIMUM 2/C NO. 12 AWG CABLE WITH PVC JACKET.
 - D. MAXIMUM 3/C (+GROUND) 2/0 AWG SER CABLE (ALUMINUM OR COPPER) WITH PVC JACKET.
 - E. MAXIMUM 3/C (+GROUND) NO. 2/0 AWG TYPE NM CABLE WITH PVC JACKET.
 - F. MAXIMUM 3/C NO. 12 METAL-CLAD (BX) CABLE.
 - G. MAXIMUM 1" DIAMETER METAL-CLAD TEK CABLE WITH PVC JACKET.
 - H. ANY CABLES, METAL-CLAD CABLES, OR ARMORED CABLES CURRENTLY LISTED UNDER THE THROUGH PENETRATING PRODUCTS CATEGORY.
 - I. MAXIMUM 4/C (+GRND) NO. 300 KCMIL ALUMINUM SER CABLE.
5. MINIMUM 3/4" DEPTH HILTI FS-ONE MAX INTUMESCENT FIRESTOP SEALANT FLUSH WITH TOP SURFACE OF FLOOR OR SOLE PLATE OF CHASE WALL.
6. MINIMUM 5/8" DEPTH HILTI FS-ONE MAX INTUMESCENT FIRESTOP SEALANT FLUSH WITH BOTTOM SURFACE OF CEILING OR LOWER TOP PLATE.

NOTES : 1. MAXIMUM DIAMETER OF OPENING = 2-1/2".
 2. CABLES TO FILL MAXIMUM 45% OF CROSS-SECTIONAL AREA OF OPENING.
 3. FIRE-RATING OF ASSEMBLY IS DEPENDENT UPON THE PERFORMANCE OF GYPSUM WALL ASSEMBLY UNDER FIRE CONDITIONS.

THIS ENGINEERING JUDGMENT REPRESENTS A FIRESTOP SYSTEM THAT WOULD BE EXPECTED TO PASS THE STATED RATINGS IF TESTED.
 (REFERENCE : UL/cUL SYSTEM NO. F-C-3012 & F-E-3005)



Hilti Firestop Systems

HILTI, Inc.
 Plano, Texas USA (800) 879-8000

Designed by

Jaeger

Sheet 2 of 2

Scale -

Date Apr. 11, 2019

Drawing No.

328815a

Saving Lives through Innovation and Education