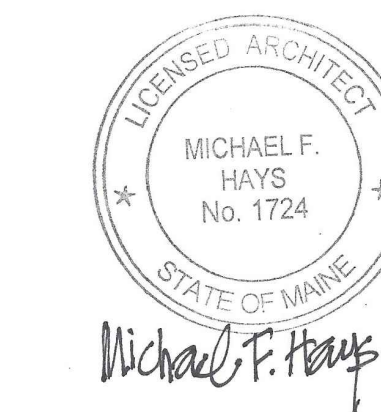


1/3AL



REV/NOV

PROJECT NAME

3 UNIT APARTMENT BUILDING
135 YORK STREET
PEERLESS INVESTMENTS, LLC
1 PORTLAND SQUARE
PORTLAND, MAINE 04101

1/3SHEET

THIRD FLOOR PLAN

DATE: 06 DEC 2017
SCALE: AS NOTED
DRAWN: JAM/MFH
JOB NO. -

1/3SHEET

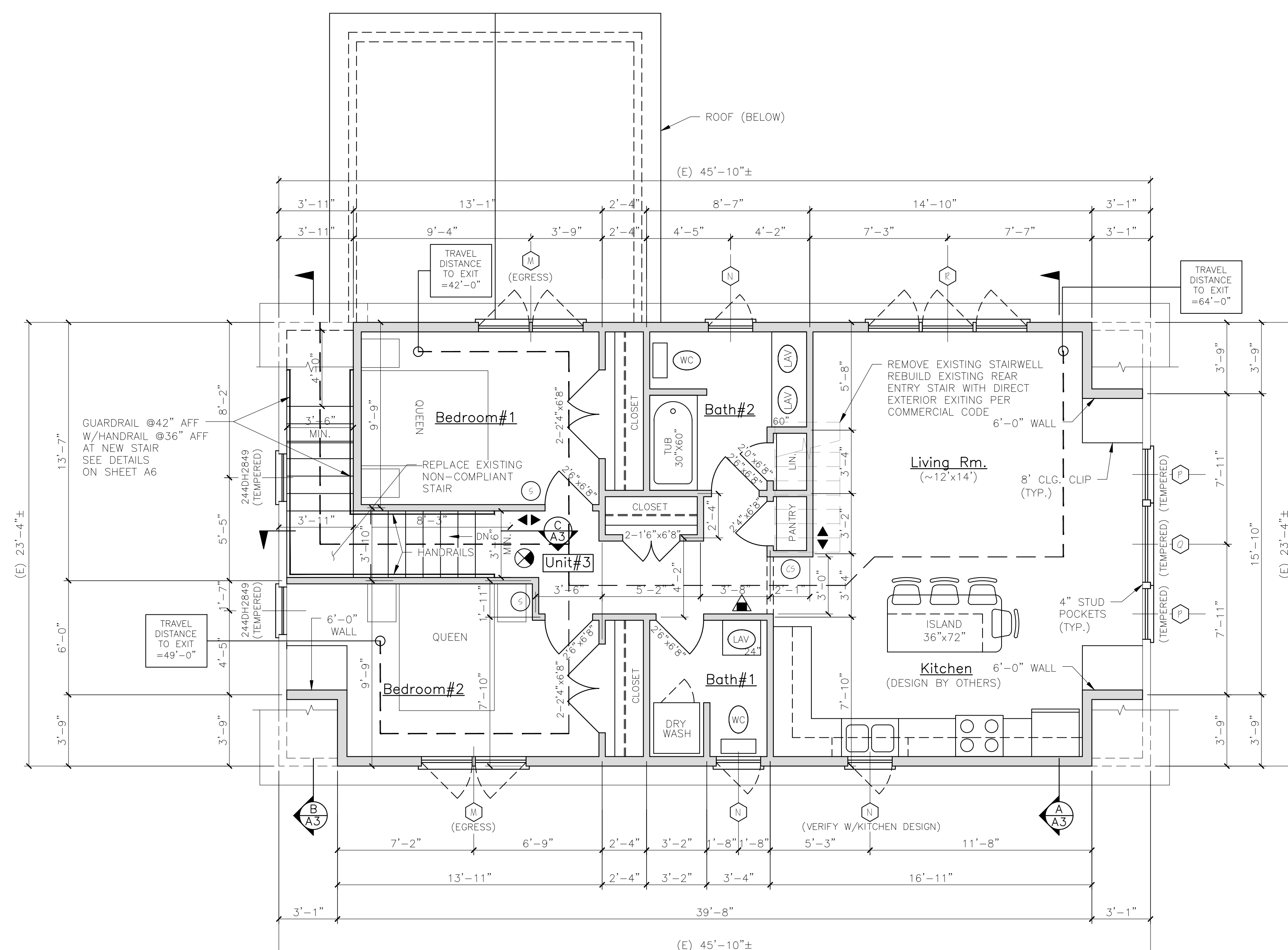
A4

COPYRIGHT REPRODUCTION OR REVUE OF THIS DOCUMENT WITHOUT WRITTEN PERMISSION FROM GRANT HAYS ASSOCIATES IS PROHIBITED.

NFPA LEGEND	
	EXIT LIGHT
	FIRE EXTINGUISHER
	EMERGENCY LIGHT
	SMOKE DETECTOR W/ SOUNDER BASE & STROBE (INTERCONNECTED)
	COMBINATION CARBON MONOXIDE / SMOKE DETECTOR W/ SOUNDER BASE & STROBE (INTERCONNECTED)
	KNOCK BOX-LOCATE PER AWJ
	1 HR RATED PARTITION
	1 HR RATED SEPARATION PARTITION
	EGRESS LIGHT

- GENERAL NOTES
- ALL HORIZONTAL UNIT SEPARATIONS (FLOOR/CEILING/ROOF) ASSEMBLIES SHALL BE 1 HR. FIRE RATED/STC 90.
SEE (S/A6) & (10/A6) & (14/A6)
 - ALL STAIR ENCLOSURES SHALL BE 1 HR. FIRE RATED.
SEE (8/A6)
 - SEE SHEET A6 FOR INTERIOR STAIR HANDRAIL DETAILS
 - SEE SHEET A7 FOR EXTERIOR DECK/STAIR DETAILS
 - SEE SHEET A6 FOR FIRE RATING AT UNDERSIDE OF STAIRS RUNS.
(4/A6)

- LIFE SAFETY NOTES
- THE BUILDING SHALL HAVE AN NFPA 13R FIRE SUPPRESSION SPRINKLER SYSTEM INSTALLED. SPRINKLER SYSTEM SHALL BE INSTALLED BY A CERTIFIED SPRINKLER CONTRACTOR AND SHALL BE REVIEWED AND APPROVED BY THE STATE OF MAINE FIRE MARSHAL AS WELL AS THE LOCAL AUTHORITY HAVING JURISDICTION. THE CONTRACTOR SHALL BEAR SOLE RESPONSIBILITY FOR THE DESIGN AND INSTALLATION OF THE SYSTEM FOR OCCUPANCY.
 - ALL ALARMS AND DETECTORS SHALL BE INTERCONNECTED.
 - REFER TO THE WINDOW SCHEDULE FOR EGRESS WINDOWS.



UNIT #3-3RD FLOOR PLAN

LEGEND	
SYMBOL	DESCRIPTION
	NEW WALL
	NEW WALL/EXISTING WALL W/INFILL
	EXISTING WALL
	THIN LINEWEIGHT DENOTES EXISTING CONDITIONS
	HEAVY LINEWEIGHT DENOTES NEW CONDITIONS
	DEMOLISHED OR REMOVED STRUCTURE OR EQUIPMENT

