



Design No. U376
BXUV.U376
Fire Resistance Ratings - ANSI/UL 263

[Page Bottom](#)

Design/System/Construction/Assembly Usage Disclaimer

- Authorities Having Jurisdiction should be consulted in all cases as to the particular requirements covering the installation and use of UL Listed or Classified products, equipment, system, devices, and materials.
- Authorities Having Jurisdiction should be consulted before construction.
- Fire resistance assemblies and products are developed by the design submitter and have been investigated by UL for compliance with applicable requirements. The published information cannot always address every construction nuance encountered in the field.
- When field issues arise, it is recommended the first contact for assistance be the technical service staff provided by the product manufacturer noted for the design. Users of fire resistance assemblies are advised to consult the general Guide Information for each product category and each group of assemblies. The Guide Information includes specifics concerning alternate materials and alternate methods of construction.
- Only products which bear UL's Mark are considered as Classified, Listed, or Recognized.

Fire Resistance Ratings - ANSI/UL 263

[See General Information for Fire Resistance Ratings - ANSI/UL 263](#)

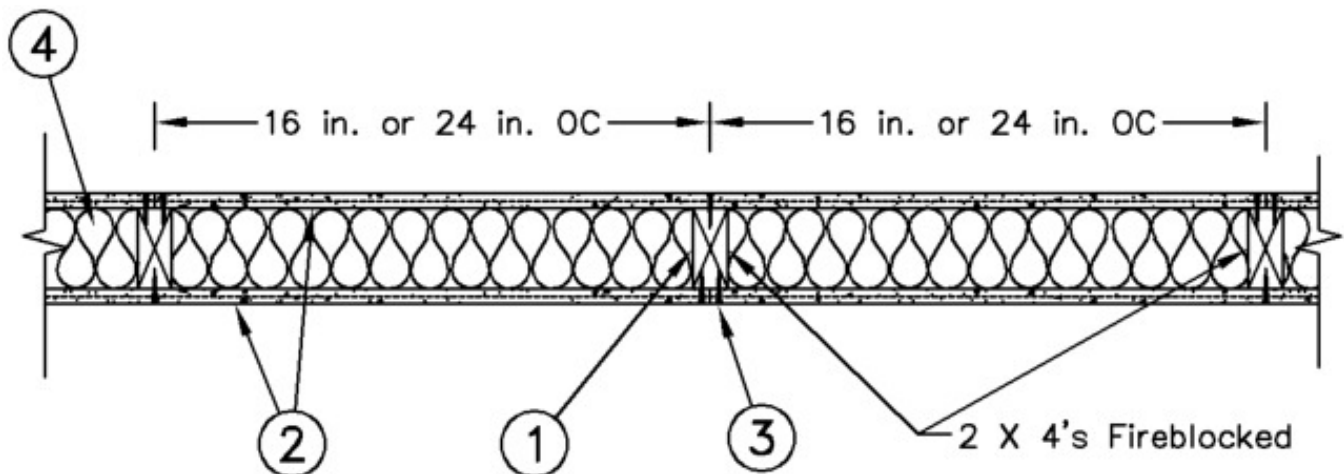
Design No. U376

May 11, 2012

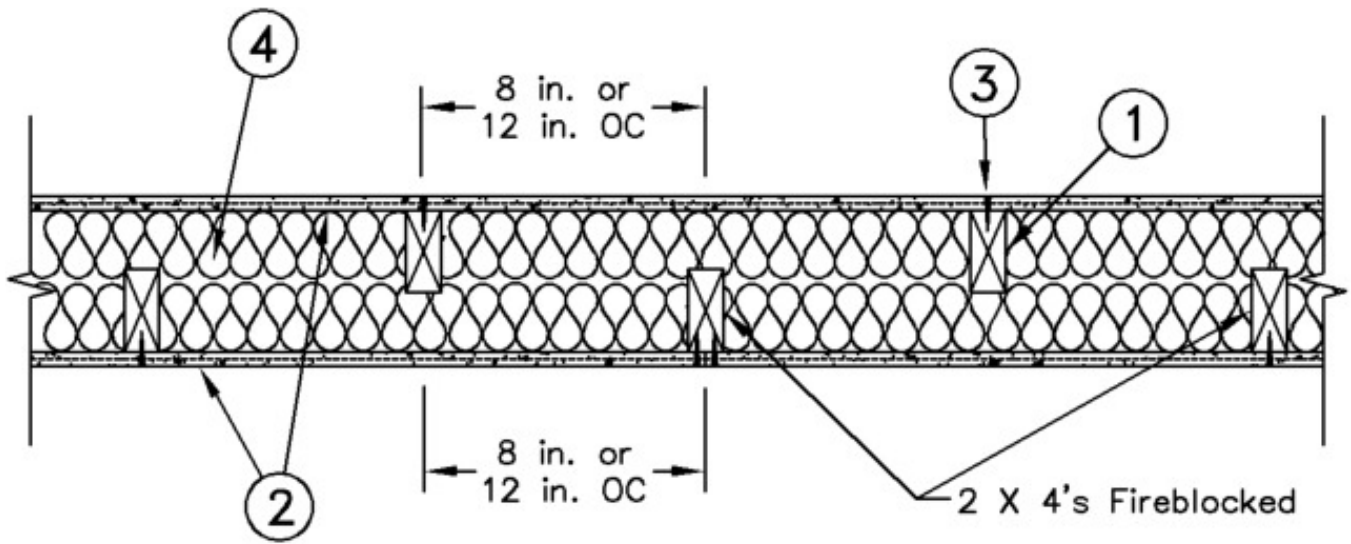
Bearing Wall Rating — 1 HR.

Finish Rating — See Items 2, 2A, 2b or 2C.

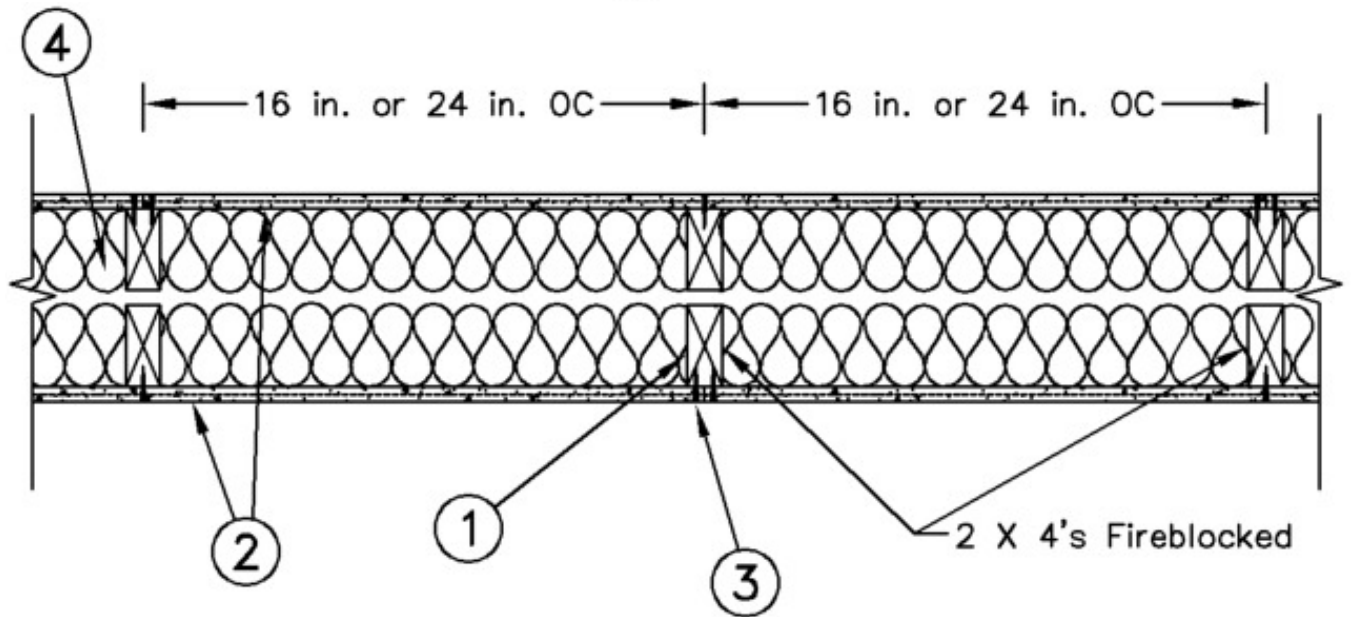
Load Restricted for Canadian Applications — See Guide [BXUV7](#)



Configuration A



Configuration B



Configuration C

1. **Wood Studs** — Nom 2 by 4 in., spaced 12, 16 or 24 in. OC as shown in Configurations A, B or C, effectively firestopped.

2. **Wall and Partition Facings and Accessories*** — Nominal 5/8 in. thick, 4 ft wide panels, applied vertically to studs and bearing plates with 1-5/8 in. long Type S screws spaced 12 in. OC at perimeter of panels and 8 in. OC in the field. Vertical joints need not be staggered on opposite sides of wall. Horizontal joints of vertically applied panels need not be backed by studs.

SERIOUS ENERGY INC — QuietRock 530 (finish rating 23 min)

2A. **Wall and Partition Facings and Accessories*** — (As an alternate to Item 2) — Nominal 5/8 in. thick, 4 ft wide panels, applied vertically. Panels nailed 7 in. OC with 6d cement coated nails 1-7/8 in. long, 0.0915 in. shank diam and 15/64 in. diam heads. Horizontal joints of vertically applied panels to be backed by studs.

SERIOUS ENERGY INC — Type QuietRock ES, Type QuietRock QR-527.

2B. **Gypsum Board*** — (As an alternate to Items 2 and 2A; acceptable for use with Configuration A when the studs are spaced 16 in. or 24 in. OC) — 5/8 in. thick, 4 ft wide, applied either horizontally or vertically to one side of the assembly, nailed to studs and bearing plates with 6d cement coated nails 1-7/8 in. long, 0.0915 in. shank diam and 1/4

in. diam heads spaced 7 in. OC. Finish rating 27 min.

AMERICAN GYPSUM CO — Types AGX-1, M-Glass, AG-C

BEIJING NEW BUILDING MATERIALS PUBLIC LTD CO — Type DBX-1

CERTAINTED GYPSUM INC — Types EGRG, GlasRoc, or Type C

CERTAINTED GYPSUM CANADA INC — Type C

GEORGIA-PACIFIC GYPSUM L L C — Types 5, 9, C, DAP, DD, DA, DGG, DS, GPFS6

LAFARGE NORTH AMERICA INC — Types LGFC6, LGFC-C, LGFC6A, LGFC2, LGFC2A, LGFC-C/A

NATIONAL GYPSUM CO — Types FSK-C, FSW, FSW-3, FSW-5, FSW-C, FSW-G

PABCO BUILDING PRODUCTS L L C, DBA PABCO GYPSUM — Type C, PG-9 or PG-C

PANEL REY S A — Type PRX

SIAM GYPSUM INDUSTRY (SARABURI) CO LTD — Type EX-1.

TEMPLE-INLAND — Type X, Veneer Plaster Base - Type X, Water Rated - Type X, Sheathing - Type X, Soffit - Type X, Type TG-C, or GreenGlass Type X.

2C. **Gypsum Board*** — (As an alternate to Items 2 through 2B; acceptable for use with Configuration A only when the studs are spaced 16 in. OC only) — 5/8 in. thick, 4 ft wide, applied either horizontally or vertically to one side of the assembly, nailed to studs and bearing plates with 6d cement coated nails 1-7/8 in. long, 0.0915 in. shank diam and 15/64 in. diam heads spaced 7 in. OC.

AMERICAN GYPSUM CO — Types AGX-1 (finish rating 23 min.), M-Glass (finish rating 23 min.), Type AGX-11 (finish rating 26 min) or Type AG-C

BEIJING NEW BUILDING MATERIALS PUBLIC LTD CO — Type DBX-1 (finish rating 24 min).

CERTAINTED GYPSUM INC — Type 1, Type SF3 (finish rating 20 min) or FRPC, Type C or Type X (finish rating 26 min), Type EGRG (finish rating 23 min)

CERTAINTED GYPSUM CANADA INC — Type C, Type X or Type Abuse-Resistant (finish rating 26 min)

CGC INC — Type AR (finish rating 26 min), Type C (finish rating 26 min), Type FCV (finish rating 26 min), Type IP-AR (finish rating 26 min), Type IPC-AR (finish rating 26 min), Type IP-X1 (finish rating 26 min), Type IP-X2 (finish rating 26 min), Type SCX (finish rating 26 min), Type SHX (finish rating 26 min), Type WRC (finish rating 26 min), Type WRX (finish rating 26 min) .

GEORGIA-PACIFIC GYPSUM L L C — Type 5 (finish rating 26 min), Type 6 (finish rating 23 min), Type 9 (finish rating 26 min), Type C (finish rating 26 min), Type DGG (finish rating 20 min), Type GPFS1 (finish rating 20 min), Type GPFS2 (finish rating 20 min), Type GPFS6 (finish rating 26 min), Type DS, Type DAP, Type DD (finish rating 20 min), DA.

LAFARGE NORTH AMERICA INC — Type LGFC2 (finish rating 20 min), Type LGFC3 (finish rating 20 min), Type LGFC6 (finish rating 26 min), Type LGFC-C (finish rating 20 min), Type LGFC6A (finish rating 34 min), Type LGFC2A, Type LGFC-C/A.

NATIONAL GYPSUM CO — Type FSK (finish rating 20 min), Type FSK-G (finish rating 20 min), Type FSW (finish rating 20 min), Type FSW-2 (finish rating 24 min), Type FSW-3 (finish rating 20 min), Type FSW-5 (finish rating 22 min), Type FSW-G (finish rating 20 min), Type FSK-C (finish rating 20 min), Type FSW-C (finish rating 20 min).

PABCO BUILDING PRODUCTS L L C, DBA PABCO GYPSUM — Types C, PG-2 (finish rating 20 min), PG-3 (finish rating 20 min), Types PG-3W, PG-5W (finish rating 20 min), Type PG-4 (finish rating 20 min), Type PG-6 (finish rating 23 min), Types PG-3WS, PG-5WS (finish rating 20 min), Types PG-5, PG-9 (finish rating 26 min) or Type PG-C.

PANEL REY S A — Type PRX.

SIAM GYPSUM INDUSTRY (SARABURI) CO LTD — Type EX-1 (finish rating 26 min)

TEMPLE-INLAND — Type X, Veneer Plaster Base - Type X, Water Rated - Type X, Sheathing - Type X, Soffit - Type X, TG-C or GreenGlass Type X.

UNITED STATES GYPSUM CO — Type AR (finish rating 26 min), Type SCX (finish rating 26 min), Type C (finish rating 26 min), Type WRX (finish rating 26 min), Type WRC (finish rating 26 min), Type IP-X1 (finish rating 26 min), Type FCV (finish rating 26 min), Type IP-X2 (finish rating 26 min), Type SHX (finish rating 26 min), Type FRX-G (finish rating 29 min), Type IP-AR (finish rating 26 min), Type IPC-AR (finish rating 26 min).

USG MEXICO S A DE C V — Type AR (finish rating 26 min), Type C (finish rating 26 min), Type WRX (finish rating 26 min), Type WRC (finish rating 26 min), Type IP-X1 (finish rating 26 min), Type FCV (finish rating 26 min), Type IP-X2 (finish rating 26 min), Type SHX (finish rating 26 min), SCX (finish rating 26 min), Type IP-AR (finish rating 26 min), Type IPC-AR (finish rating 26 min).

2D. **Gypsum Board*** — (As an alternate to Items 2 through 2C; acceptable for use with Configuration B) — 5/8 in. thick, 4 ft wide, applied either horizontally or vertically to one side of the assembly, nailed to studs and bearing plates with 6d cement coated nails 1-7/8 in. long, 0.0915 in. shank diam and 1/4 in. diam heads spaced 7 in. OC.

AMERICAN GYPSUM CO — Types AG-C.

CERTAINTED GYPSUM INC — Type FRPC (Finish rating 20 min), Type C.

CERTAINTED GYPSUM CANADA INC — Type C.

CGC INC — Types C, IP-X2 (Finish rating 26 min).

GEORGIA-PACIFIC GYPSUM L L C — Type 5 (Finish rating 26 min).

LAFARGE NORTH AMERICA INC — Types LGFC-C, LGFC-C/A.

NATIONAL GYPSUM CO — Types FSK-C, FSW-C, FSW-G.

PABCO BUILDING PRODUCTS L L C, DBA PABCO GYPSUM — Type C or PG-C.

TEMPLE-INLAND — Type TG-C.

UNITED STATES GYPSUM CO — Types C, IP-X2 (Finish rating 26 min).

2E. **Gypsum Board*** — (As an alternate to Items 2 through 2D; acceptable for use with Configuration C) — Nom 5/8 in. thick, 4 ft wide, applied either horizontally or vertically to one side of the assembly, nailed to studs and bearing plates

with 6d cement coated nails 1-7/8 in. long, 0.0915 in. shank diam and 1/4 in. diam heads spaced 7 in. OC.

Any UL Classified Gypsum Board that is eligible for use in Design Nos. L501, G512 or U305. See **Gypsum Board*** (CKNX) category for names of Classified companies.

3. **Joints and Screwheads** — Panel joints covered with paper tape and two layers of joint compound. Screwheads covered with two layers of joint compound.

4. **Batts and Blankets*** — Glass fiber insulation, nom 3-1/2 in. thick, min. density of 0.80 pcf, with a flame spread of 25 or less and a smoke developed of 50 or less, friction-fitted to completely fill the stud cavities. See **Batts and Blankets** Category (BKNV) for names of manufacturers.

*Bearing the UL Classification Mark

Last Updated on 2012-05-11

[Questions?](#)

[Print this page](#)

[Terms of Use](#)

[Page Top](#)

© 2012 UL LLC

The appearance of a company's name or product in this database does not in itself assure that products so identified have been manufactured under UL's Follow-Up Service. Only those products bearing the UL Mark should be considered to be Listed and covered under UL's Follow-Up Service. Always look for the Mark on the product.

UL permits the reproduction of the material contained in the Online Certification Directory subject to the following conditions: 1. The Guide Information, Designs and/or Listings (files) must be presented in their entirety and in a non-misleading manner, without any manipulation of the data (or drawings). 2. The statement "Reprinted from the Online Certifications Directory with permission from UL" must appear adjacent to the extracted material. In addition, the reprinted material must include a copyright notice in the following format: "© 2012 UL LLC".