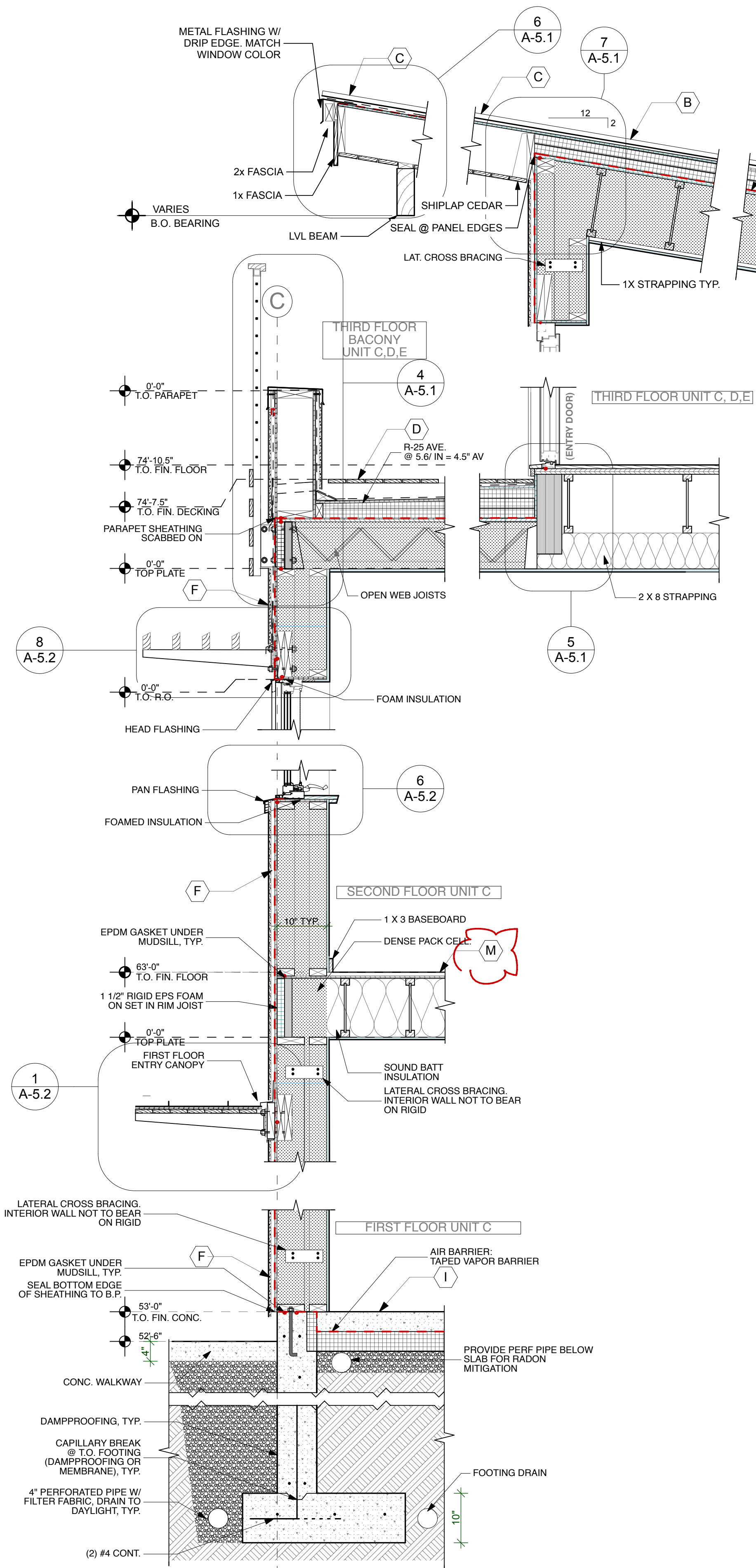
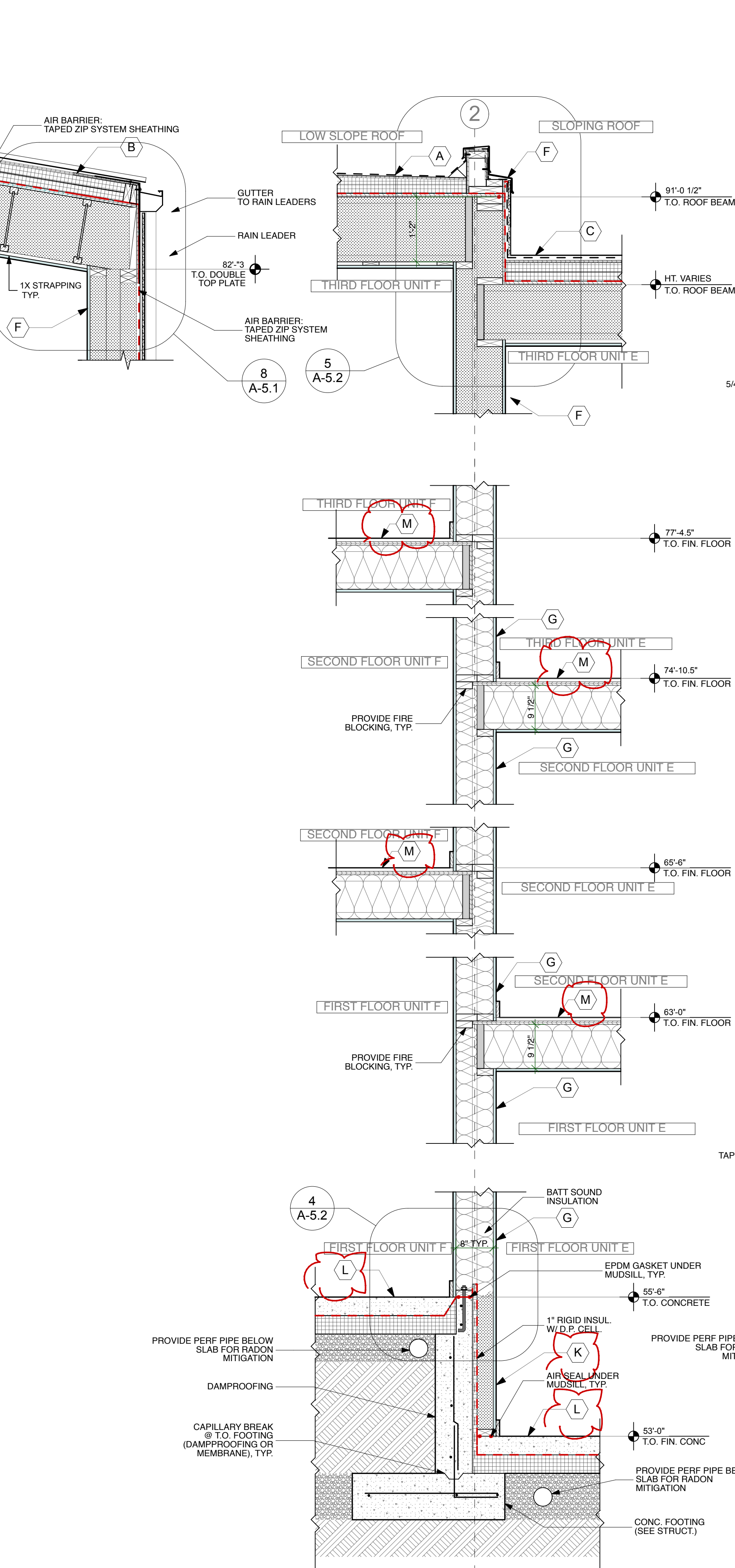


ASSEMBLY NOTES

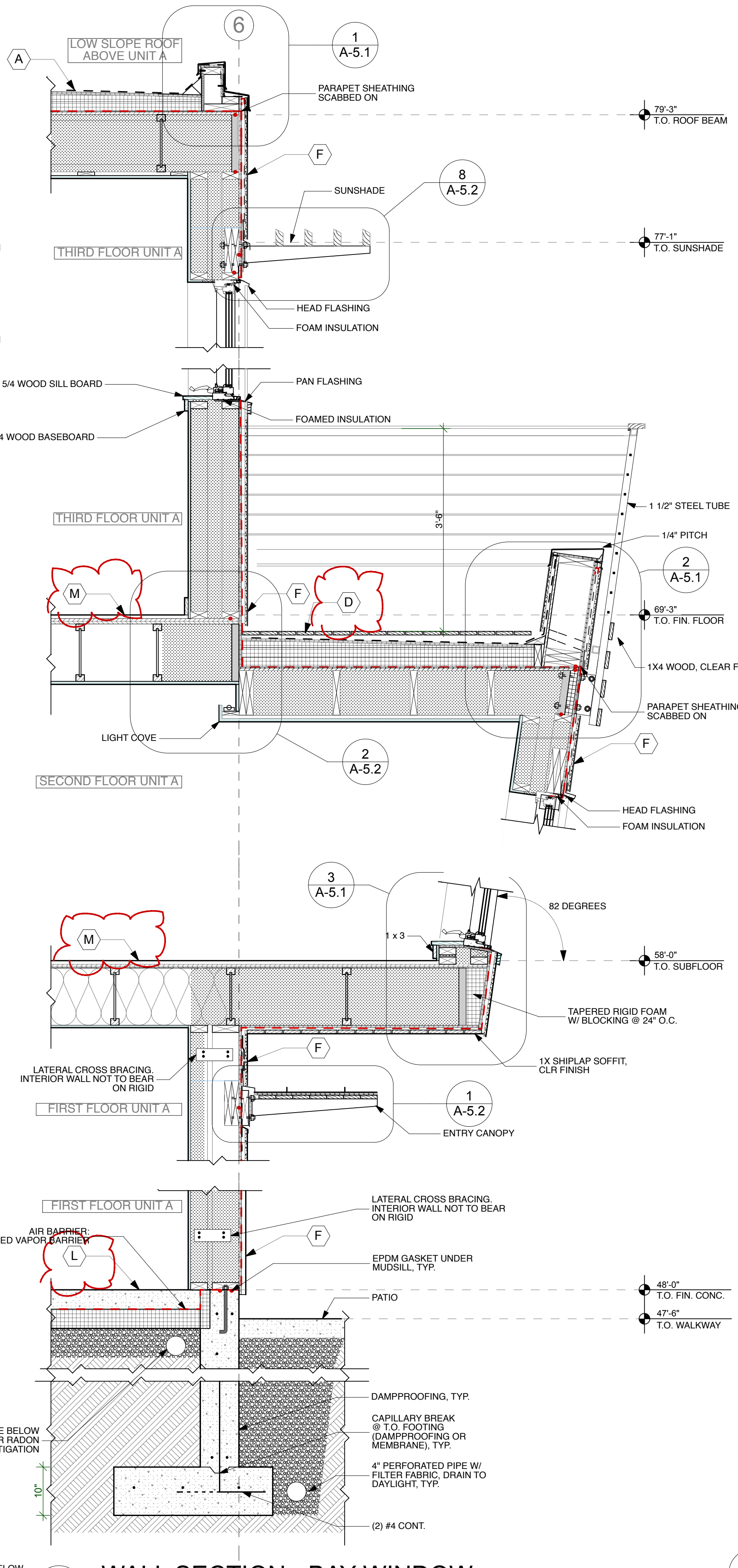
- A FLAT ROOF: -R-68**
Fully Adhered T.P.O. Membrane Roof System, On 1/2" Protection Board, On Tapered Polyiso. Insulation, On Non-Tapered Polyiso. Insulation (R-25 avg.), On "Zip System Roof Sheathing" w/ Taped Seams (See Struct.). On Open Web Joists (See Struct.) filled w/ Dense Pack Cellulose Insulation (R-43), On 5/8" Type X GWB Ceiling. See Interior Finish Schedule for Finish Materials.
- B SHED ROOF: -R-68**
Fully Adhered T.P.O. Membrane Roof System, On 1/2" Protection Board, On Non-Tapered Polyiso. Insulation (R-25 avg.), On "Zip System Roof Sheathing" w/ Taped Seams (See Struct.). On Open Web Joists (See Struct.) filled w/ Dense Pack Cellulose Insulation (R-50), On 5/8" Type X GWB Ceiling. See Interior Finish Schedule for Finish Materials.
- C SHED ROOF @ EAVE:**
Fully Adhered T.P.O. Membrane Roof System, On 1/2" Protection Board, On Non-Tapered Polyiso. Insulation (R-25 avg.), On Roof Sheathing (See Struct.), On 2x framing (See Struct.), on Soffit Material. See Interior Finish Schedule for Finish Materials.
- D ROOF DECK: -R-58**
1x Decking (Alt. Synth. Decking), On Reverse Tapered 2x Sleepers @ 16 O.C., On Fully Adhered T.P.O. Membrane Roof System, On 1/2" Protection Board, On Tapered Polyiso. Insulation, On Non-Tapered Polyiso. Insulation (R-25 avg.), On "Zip System Roof Sheathing" w/ Taped Seams (See Struct.), On Open Web Joists (See Struct.) filled w/ Dense Pack Cellulose Insulation (R-34), on 5/8" Type X GWB Ceiling. See Interior Finish Schedule for Finish Materials.
- F EXTERIOR WALL: -R-36**
Exterior Siding Type S1, S2 or S3 (See Elevations for Extents), On Rainscreen (1x3 K.D. strapping or "Home Slicker" - see siding type for extents), incl. black vinyl bug screen), On Weather Resistant Barrier (WRB), On 1/2" "Zip System Wall Sheathing" w/ Taped Seams, On 10" Double Stud Wall (See Struct.) w/ Full-Depth Dense-Packed Cellulose (R-36), on 5/8" Type X GWB. See Interior Finish Schedule for Finish Materials.
- G PARTY WALL Type 1: Interior/Interior -STC Rating: 45**
Double 2 x 4 Wall (8" w/ Min. Formaldehyde-Free Batt Insulation One Side w/ 5/8" Type X GWB both sides.
- H PARTY WALL Type 2: Exterior/Interior -R-36**
Exterior Siding Type S1, S2 or S3 (See Elevations for Extents), On Rainscreen (1x3 K.D. strapping or "Home Slicker" - see siding type for extents), On Weather Resistant Barrier (WRB), On 1/2" "Zip System Wall Sheathing" w/ Taped Seams, On Type X GWB, On 10" Double Stud Wall (See Struct.) w/ Full-Depth Dense-Packed Cellulose (R-36), on 5/8" Type X GWB. See Interior Finish Schedule for Finish Materials. Type X GWB both sides.
- J PARTY WALL Type 3: Parapet Wall -Uninsulated**
SAME ASSEMBLY BOTH SIDES: Exterior Siding Type 1, 2 or 3 (See Elevations for Extents), On Rainscreen (1x3 K.D. strapping or "Home Slicker" - see siding type for extent), On Weather Resistant Barrier (WRB), On 1/2" "Zip System Wall Sheathing" w/ Taped Seams, On Type X GWB, On 10" Double Stud Wall (See Struct.)
- K CONC. FOUND. WALL @ Grade Changes: -R-17**
Free Draining Backfill, on Fluid-Applied Dampproofing, On Reinforced Concrete Retaining Wall (See Struct.) On 1" Rigid Insul., On Min. 15 Mil. Vapor Barrier Taped & Sealed, On 2x Framing w/ Dense Pack Cellulose, On 5/8" Type X GWB, On Interior Finish. See Interior Finish Schedule for Finish Materials.
- L INTERIOR SLAB ON GRADE: -R-16**
Sealed Reinforced 4" Concrete slab (see struct), On 15 Mil. min. Poly Vapor Barrier Taped and Sealed, On 4" Rigid EPS Insulation, On 6" Crushed Gravel fill (No Fines)
- M INTERIOR FRAMED FLOORS:**
Finish Floor Material (See Interior Finish Schedule), On Structural Floor Sheathing (See Struct.), On Floor Joists (See Struct.), On 5/8" Type X GWB Ceiling. See Interior Finish Schedule For Finish Materials.



4 WALL SECTION - DECK EAVE
SCALE: 3/4" = 1'-0"



3 PARTY WALL - INTERIOR
SCALE: 3/4" = 1'-0"



2 WALL SECTION - BAY WINDOW
SCALE: 3/4" = 1'-0"

1 WALL SECTION - THICK SLAB
SCALE: 3/4" = 1'-0"