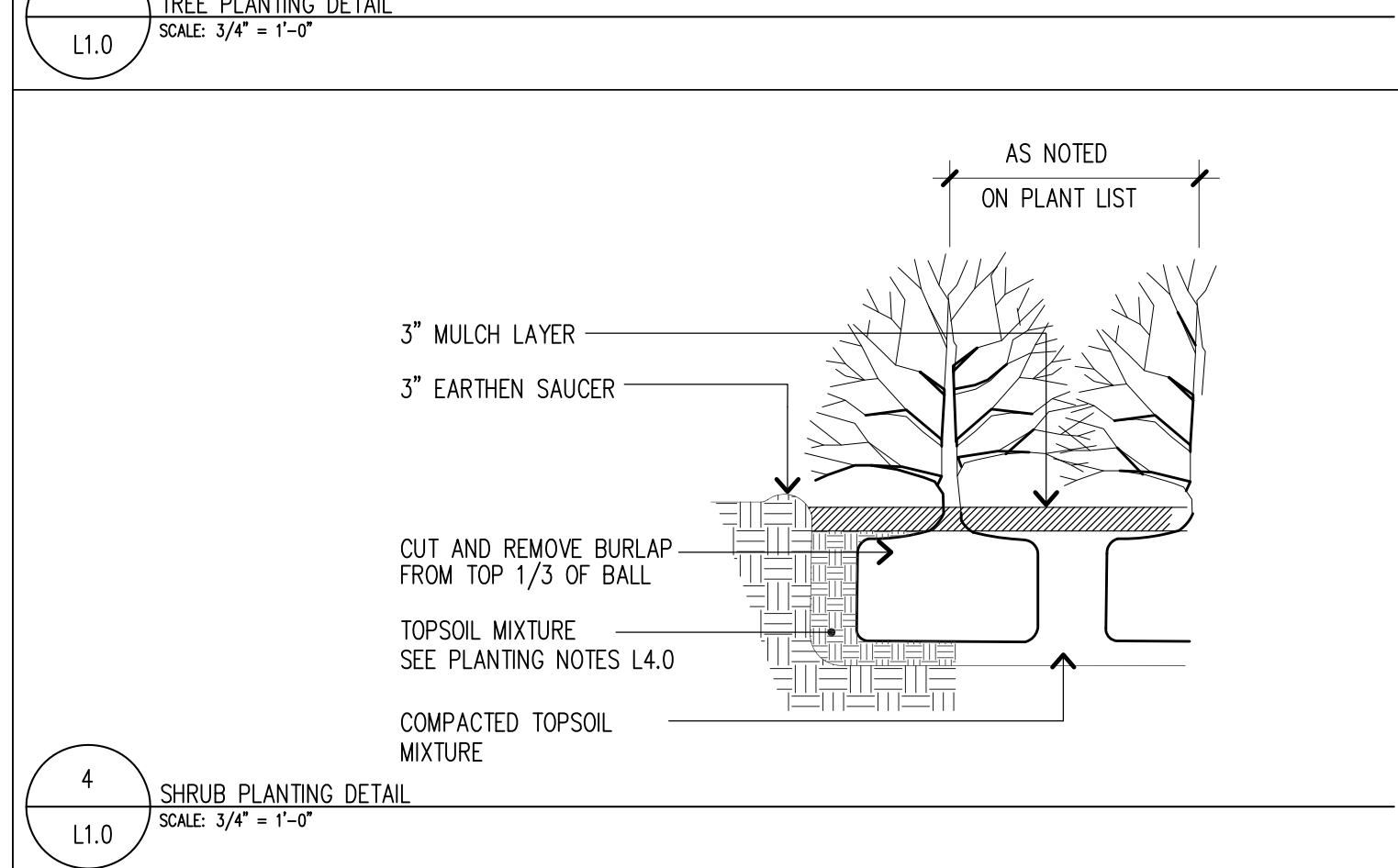
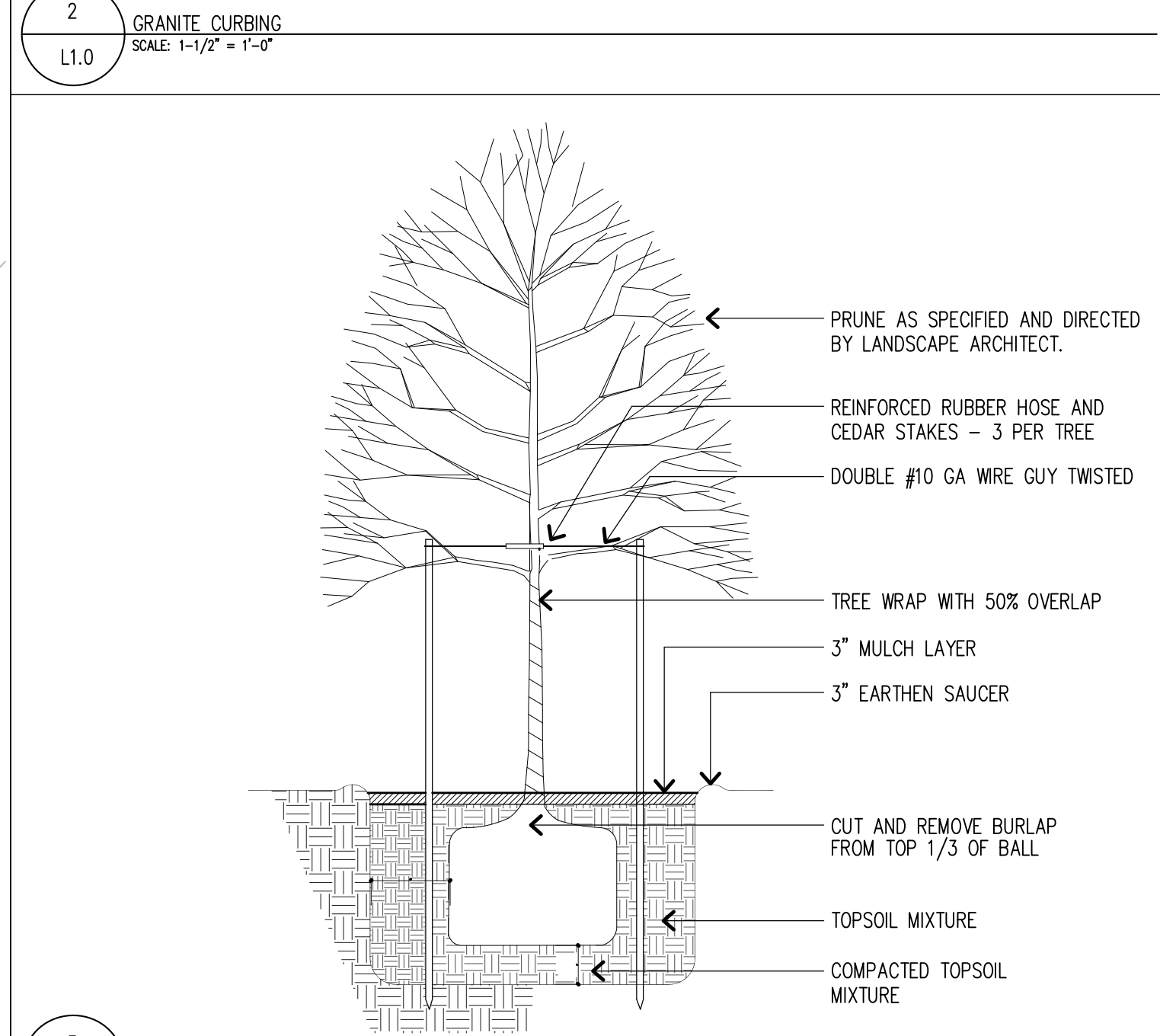
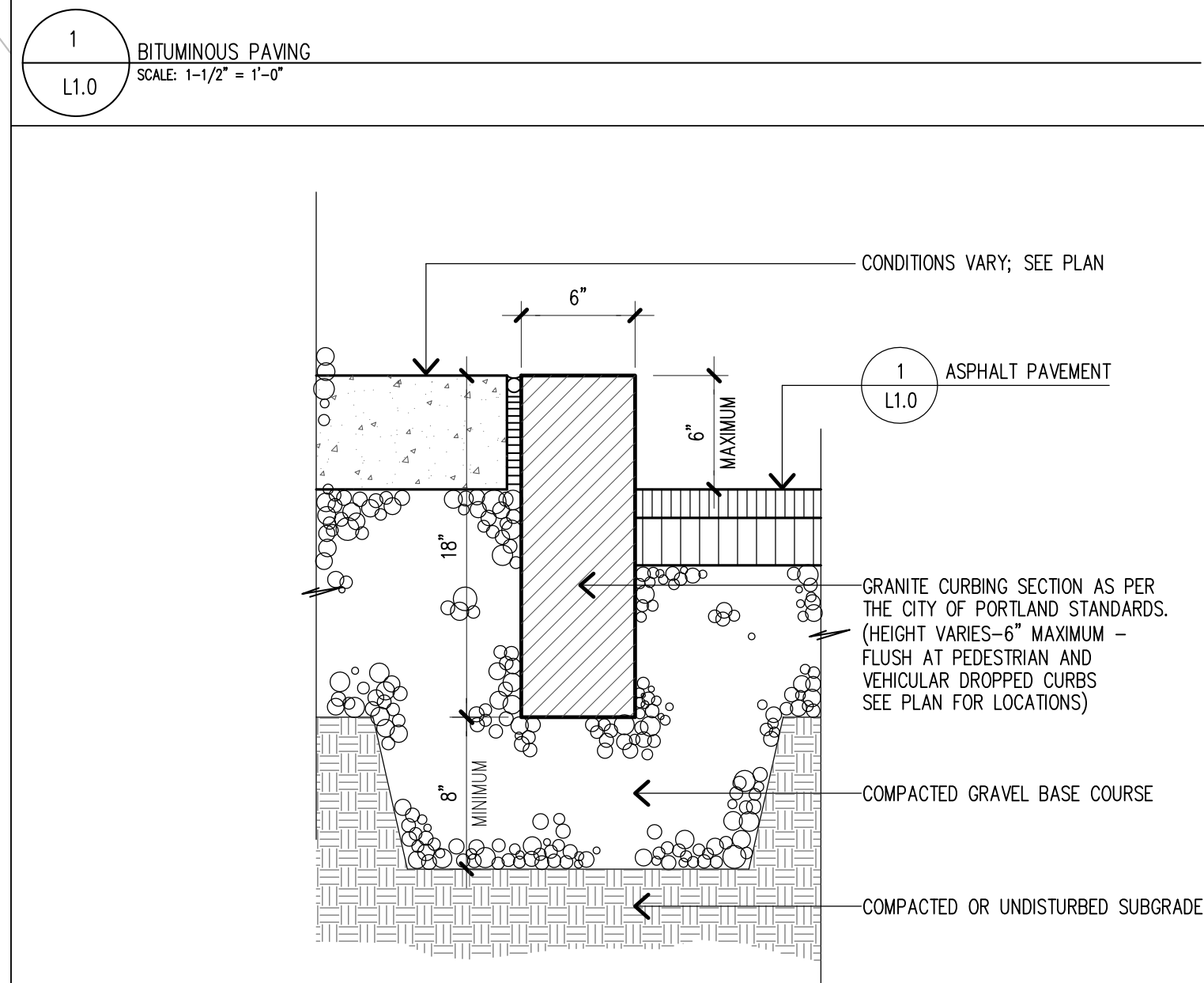
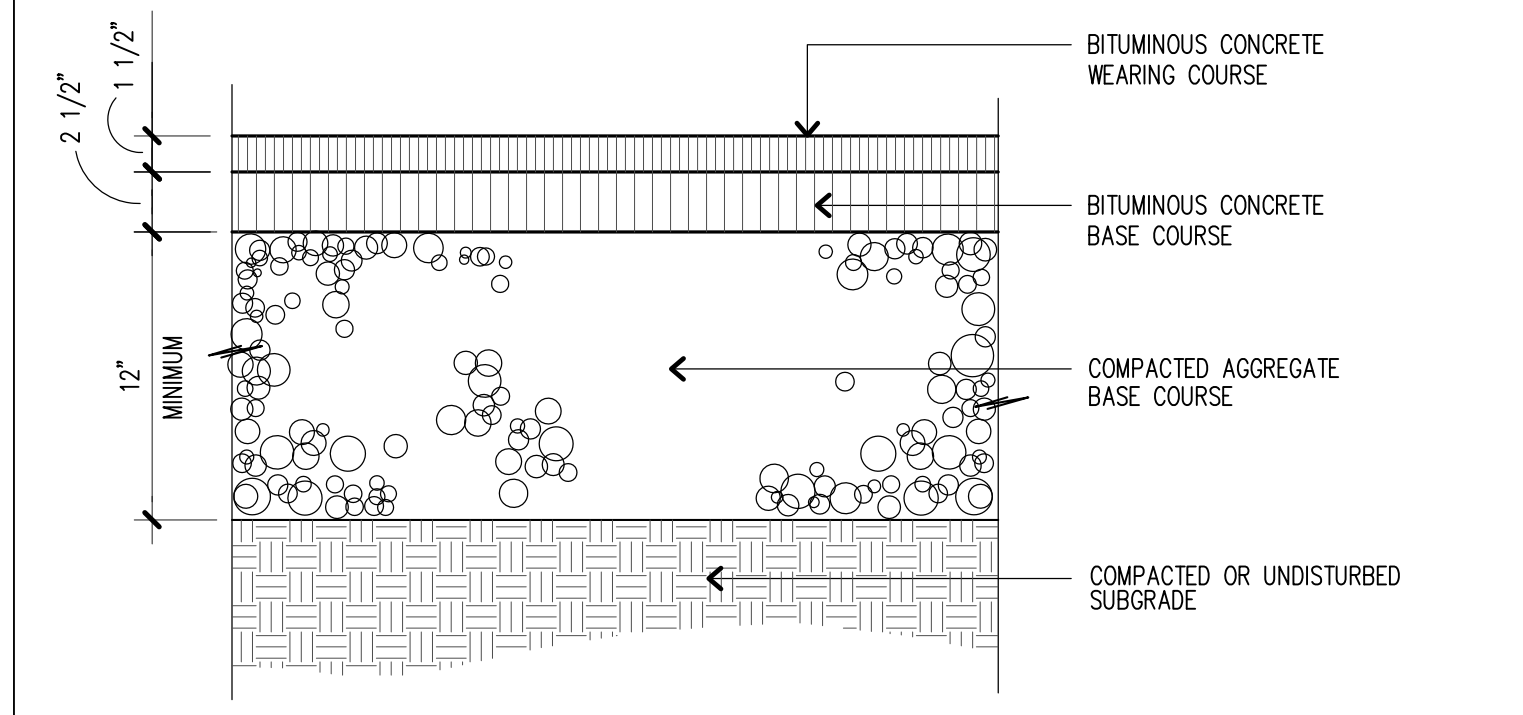
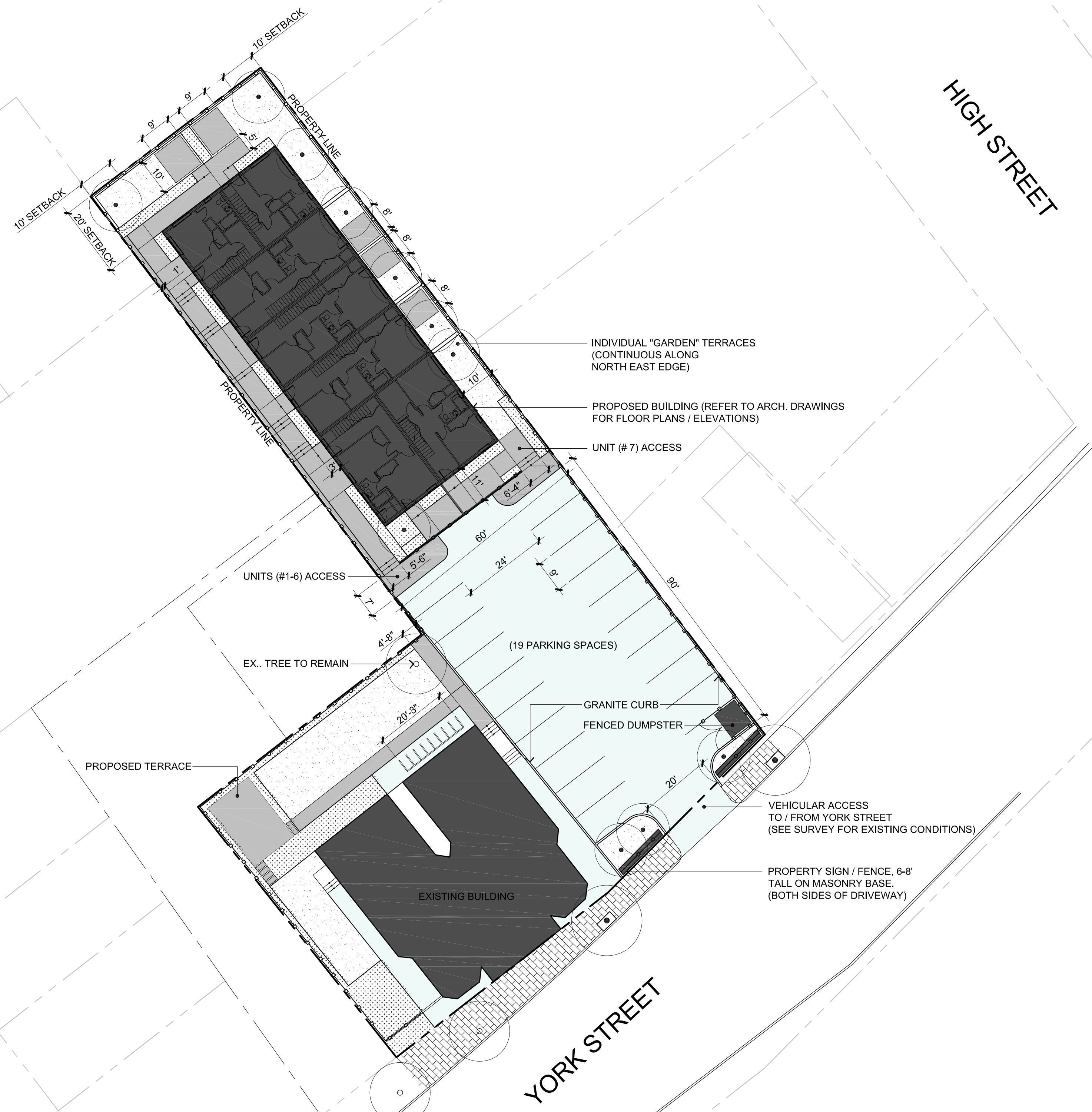


NOTE:
SEE CIVIL DRAWINGS FOR
GRADING AND STORMWATER
MANAGEMENT.



SYMBOLS LEGEND

- EXISTING TREE
- PROPOSED AMELANCHIER SP. (1.75" CAL.)
- PROPOSED Acer rubrum (2.5" CAL.)
- CONCRETE PAVING
- EXISTING BRICK PAVING
- ASPHALT PAVING
- PERMEABLE PLANTED SURFACE
- PROPOSED PLANTER CONTAINING NATIVE SHRUBS AND GROUNDCOVER (LIST TBD)
- PROPOSED STEPS
- 6' TALL WOOD FENCE
- BICYCLE PARKING (10 SPACES)

- ### PLANTING NOTES
- Planting contractor shall visit site prior to submitting bid to become completely familiar with site conditions.
 - No planting will be installed until all grading and construction has been completed in immediate area.
 - Contractor to verify all utilities on property and to protect all utilities during excavation for plants.
 - If there is a discrepancy between the number of plants shown on the plan and the number of plants shown in plant list, the number of plants shown on plan will take precedence.
 - All container material to be grown in container a minimum of 6 months.
 - All material shall comply with the latest edition of the American Standard for Nursery Stock, American Association of Nurseryman.
 - Contractor shall repair all damage to property from planting operations at no cost to the owner.
 - Contractor shall guarantee new plant material through one calendar year from time of provisional acceptance.
 - The Landscape Architect will tag all plants at the nursery and inspect them after delivery to the site. All plant materials shall be inspected by the Landscape Architect on site prior to installation.
 - All proposed plants shall be located carefully as shown on the plans and the placements shall be approved by Landscape Architect before the plants are installed.
 - All disturbed areas not to be paved or planted shall be loamed and seeded as shown. The seed mix specifications are as follows: LESCO Fine Fescue Links Blend of 35% hard fescue, 35% creeping red fescue, 20% chewings fescue and 10% sheep fescue. Add 5% Little Bluestem and 5% Northeast Wildflower seed mixture by weight to the Links Blend.
 - Staking and guying shall be determined by the Landscape Architect on a tree by tree basis. For pricing purposes, provide a per tree unit cost for staking and guying. If staking and guying is required, remove tree wrap, stakes, and guy wires at end of first growing season.
 - For tree planting in lawn areas, any disturbed lawn shall be loamed and seeded as necessary.
 - Landscape Architect to flag trees to be protected on site.

PROJECT:
121 YORK ST.
PORTLAND, MAINE

CLIENT:
HARBOR VIEW DEVELOPMENT LLC.
DBA, RED FERN PROPERTIES

date: MARCH 24, 2011
revisions:
scale: As Noted
drawn: sd
checked:

TITLE:
PRELIMINARY SITE PLAN
(NOT FOR CONSTRUCTION)

SHEET:
L1.0

SOREN DENIORD DESIGN STUDIO
43 WELLWOOD RD.
PORTLAND, ME 04103
1-207-400-2450
soren@sorendenior.com

