

PRELIMINARY  
NOT FOR  
CONSTRUCTION

ISSUED FOR: \_\_\_\_\_ BY DATE: \_\_\_\_\_

REVISION: \_\_\_\_\_ REV. DATE: \_\_\_\_\_

UTILITIES: \_\_\_\_\_ WHS 5/23/11

DRAWING NAME: **DETAIL SHEET 1**

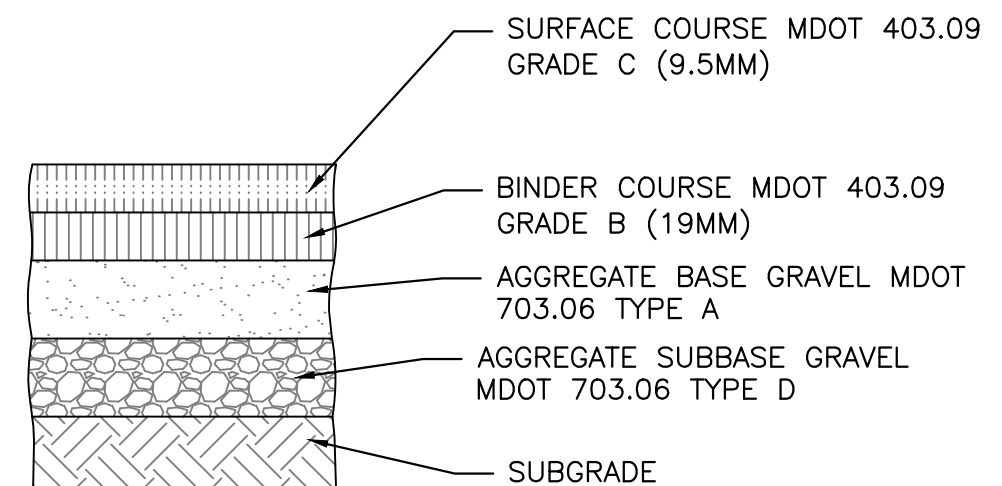
PROJECT NAME: **HARBORVIEW DEVELOPMENT, LLC**

CLIENT: **HARBORVIEW DEVELOPMENT, LLC**  
PO BOX 8816, PORTLAND, MAINE 04104

ACORN ENGINEERING, INC.

FILE: ACORNPLAN  
 DATE: 12/6/10  
 JN: 1035  
 SCALE: N/A  
 DESIGNED BY: WHS  
 DRAWN BY: WHS  
 CHECKED BY: HPS

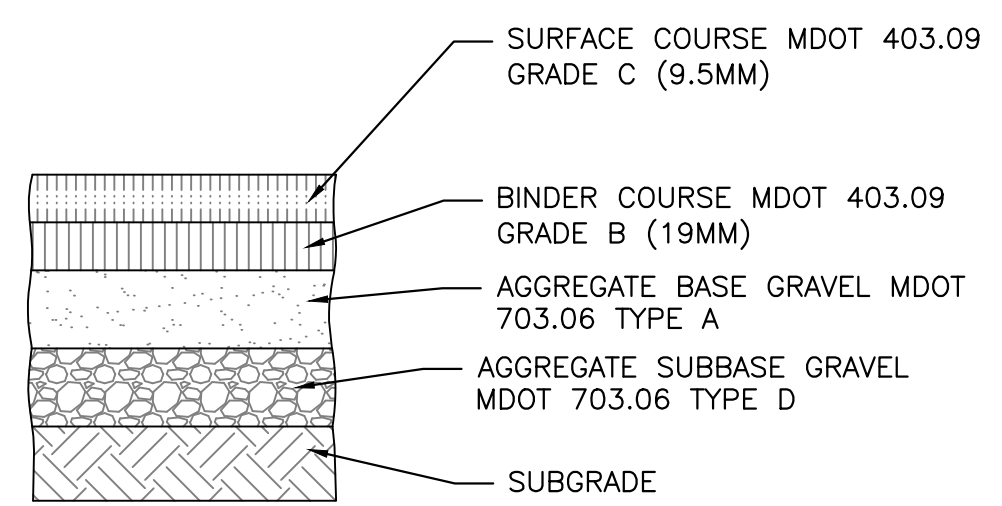
DRAWING NO.  
**C-3**



NOTE:  
COMPACT SUBGRADE TO 95% MAXIMUM DRY DENSITY IN ACCORDANCE WITH ASTM D-1557

THICKNESS OF LAYERS	
STANDARD	LAYERS
2"	SURFACE COURSE MDOT 403.09 GRADE C (12.5mm)
3"	BINDER COURSE MDOT 403.09 GRADE B (19mm)
6"	AGGREGATE BASE GRAVEL MDOT 703.06 TYPE B
18"	AGGREGATE SUBBASE GRAVEL MDOT 703.06 TYPE D

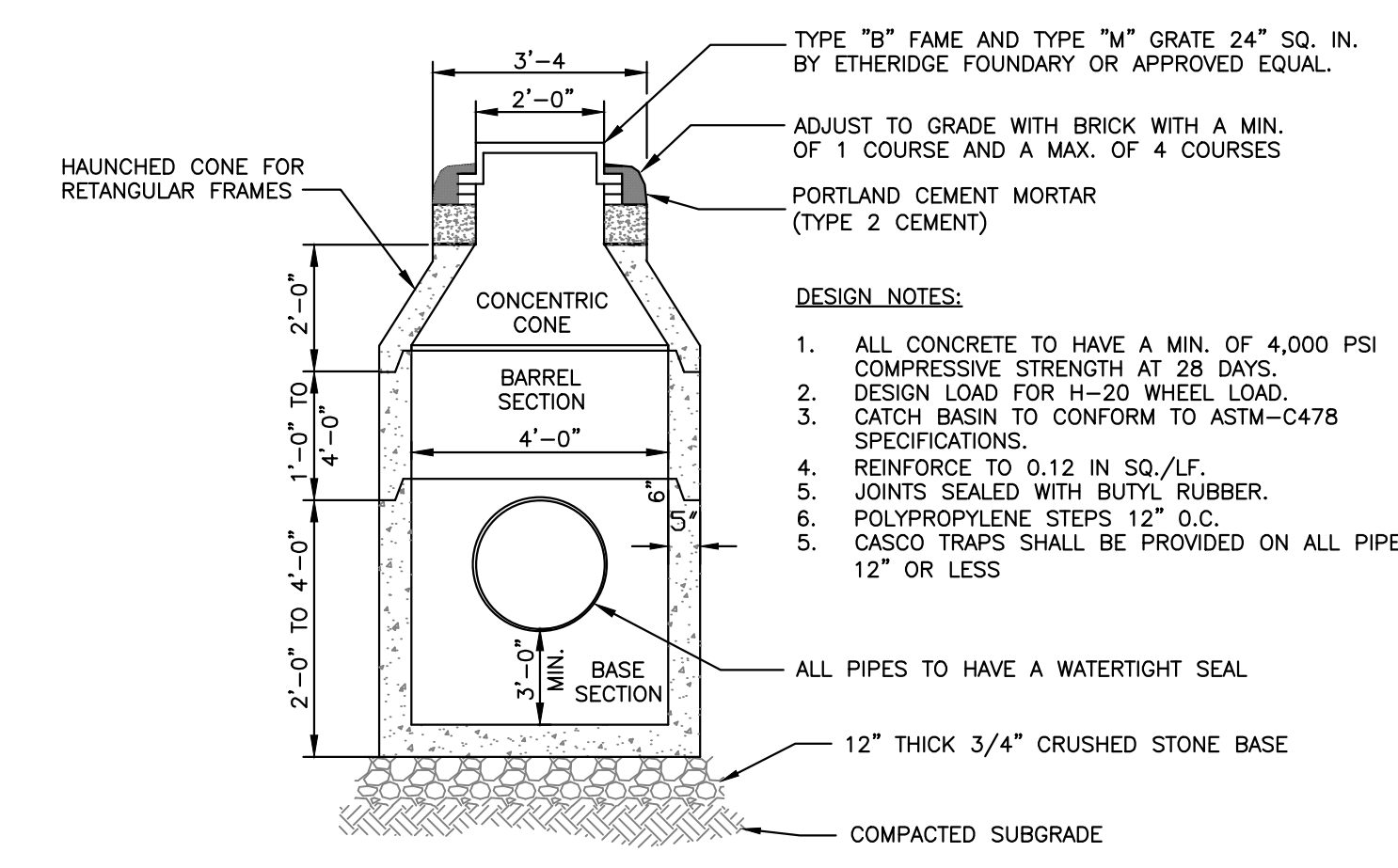
**CITY OF PORTLAND ARTERIAL BITUMINOUS PAVEMENT PROFILE**  
NOT TO SCALE



NOTE:  
COMPACT SUBGRADE TO 95% MAXIMUM DRY DENSITY IN ACCORDANCE WITH ASTM D-1557

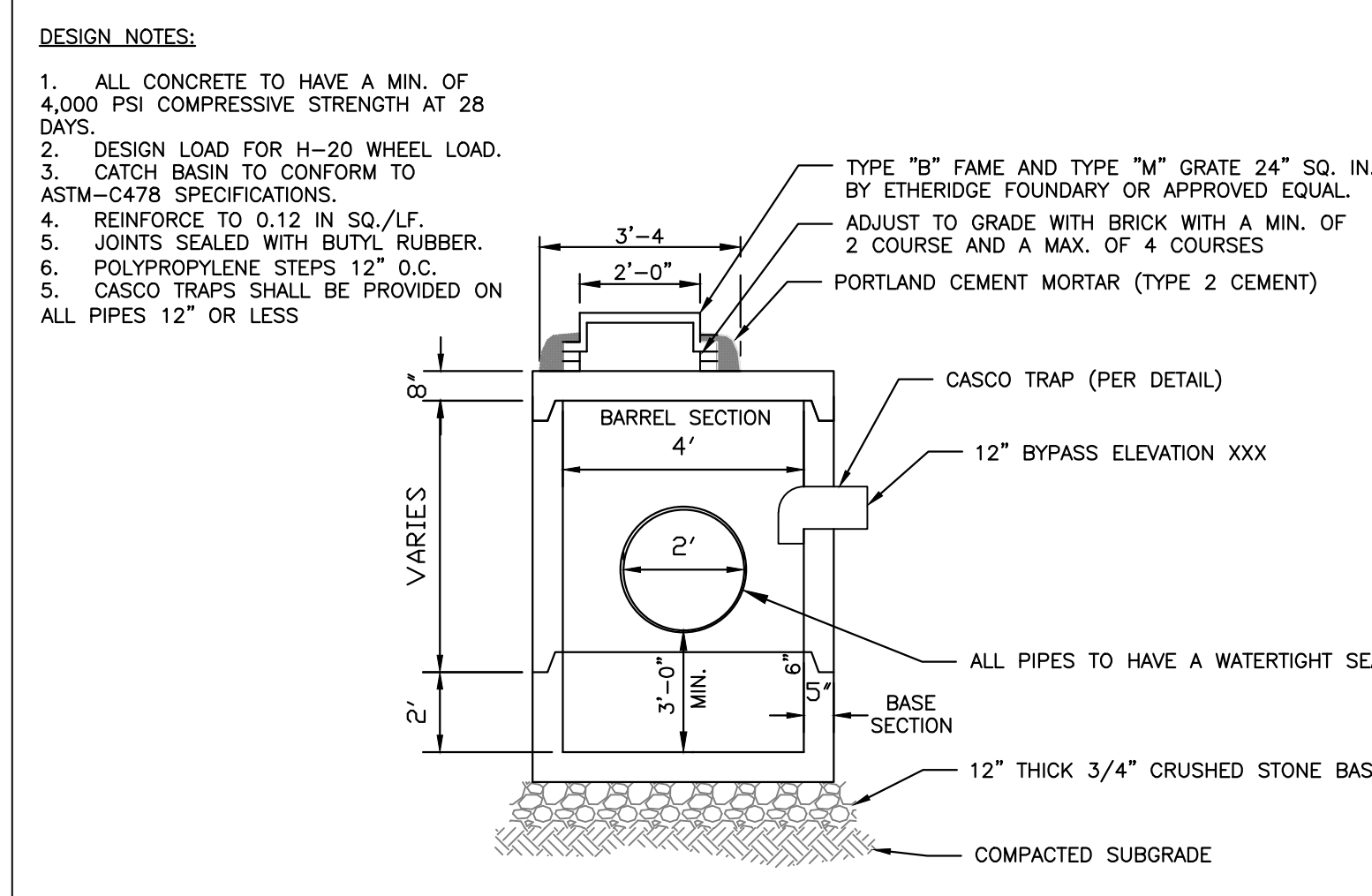
THICKNESS OF LAYERS	
STANDARD	LAYERS
1-1/2"	SURFACE COURSE MDOT 403.09 GRADE C (9.5mm)
2-1/2"	BINDER COURSE MDOT 403.09 GRADE B (19mm)
6"	AGGREGATE BASE GRAVEL MDOT 703.06 TYPE A
9"	AGGREGATE SUBBASE GRAVEL MDOT 703.06 TYPE D

**BITUMINOUS PAVEMENT PROFILE**  
NOT TO SCALE



- DESIGN NOTES:**
- ALL CONCRETE TO HAVE A MIN. OF 4,000 PSI COMPRESSIVE STRENGTH AT 28 DAYS. DESIGN LOAD FOR H-20 WHEEL LOAD.
  - CATCH BASIN TO CONFORM TO ASTM-C478 SPECIFICATIONS.
  - REINFORCE TO 0.12 IN SQ./LF.
  - JOINTS SEALED WITH BUTYL RUBBER.
  - POLYPROPYLENE STEPS 12" O.C.
  - CASCO TRAPS SHALL BE PROVIDED ON ALL PIPES 12" OR LESS.

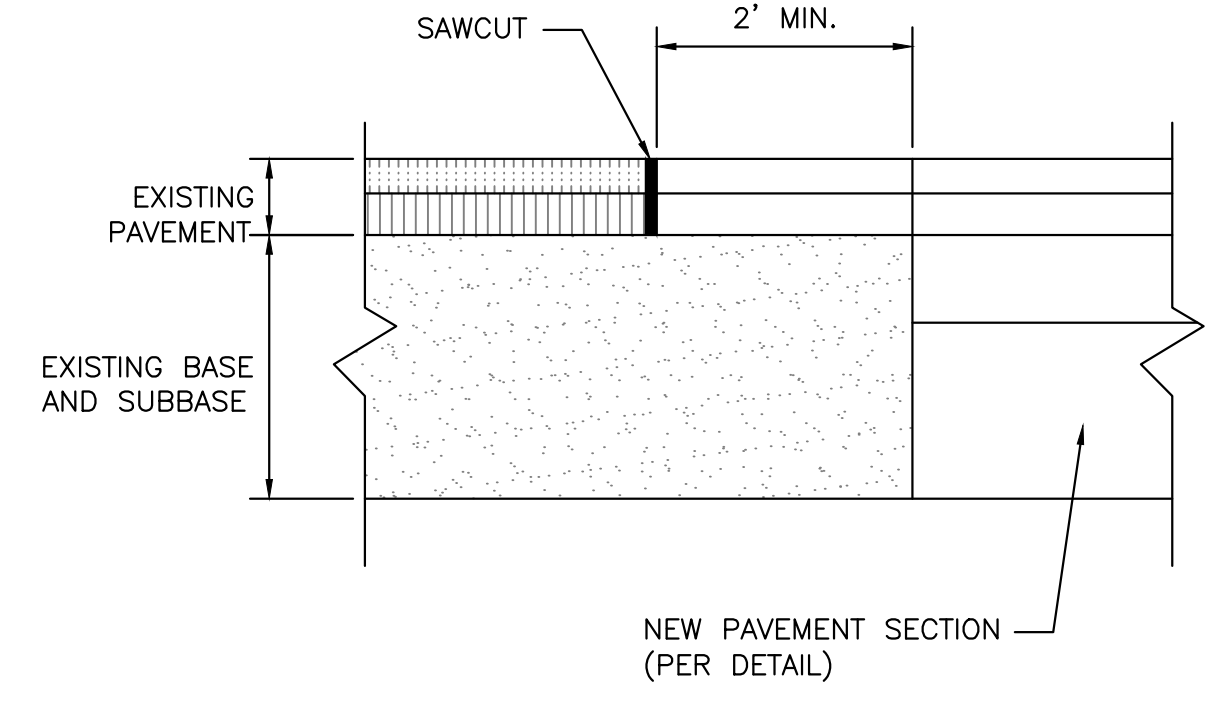
**4'-0" PRECAST CATCH BASIN**  
NOT TO SCALE



- DESIGN NOTES:**
- ALL CONCRETE TO HAVE A MIN. OF 4,000 PSI COMPRESSIVE STRENGTH AT 28 DAYS. DESIGN LOAD FOR H-20 WHEEL LOAD.
  - CATCH BASIN TO CONFORM TO ASTM-C478 SPECIFICATIONS.
  - REINFORCE TO 0.12 IN SQ./LF.
  - JOINTS SEALED WITH BUTYL RUBBER.
  - POLYPROPYLENE STEPS 12" O.C.
  - CASCO TRAPS SHALL BE PROVIDED ON ALL PIPES 12" OR LESS.

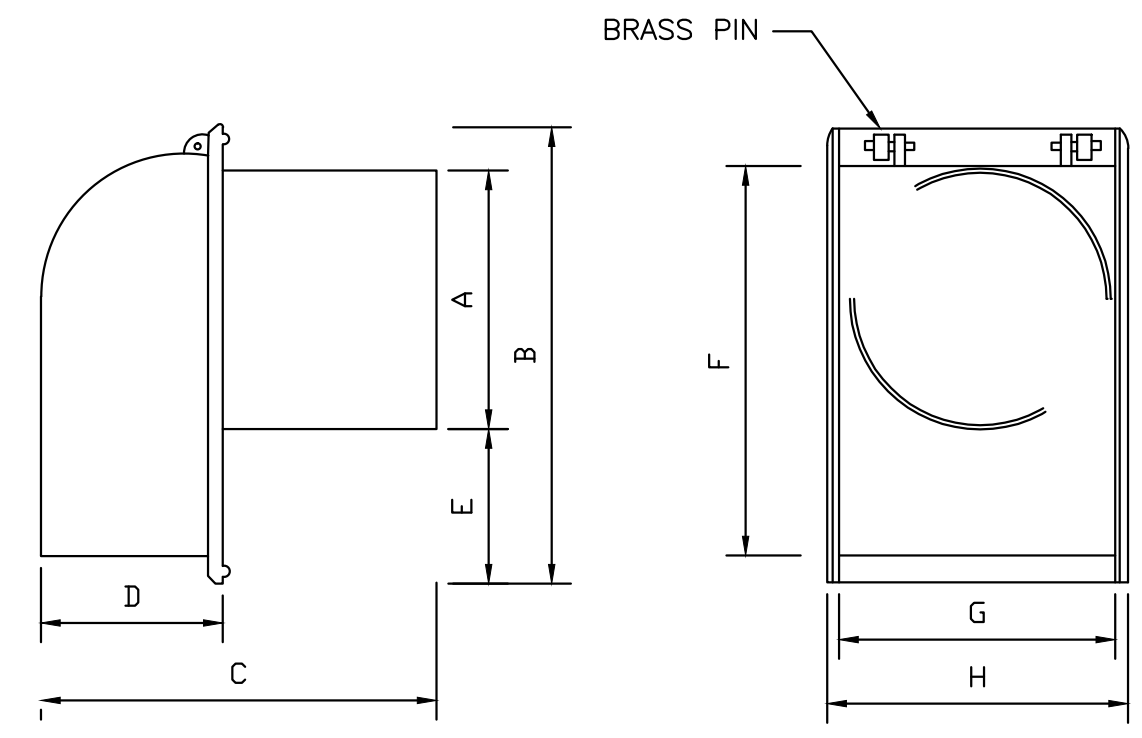
**4'-0" PRECAST CATCH BASIN WITH FLATTOP**  
NOT TO SCALE

- NOTES:**
- SAWCUT EXISTING PAVEMENT AND REMOVE 2' STRIP OF EXISTING PAVEMENT. APPLY BITUMINOUS TACK COAT PRIOR TO PLACEMENT OF NEW BITUMINOUS PAVEMENT.
  - THE NEW PAVEMENT SECTION SHALL MEET THE CITY OF PORTLAND ARTERIAL BITUMINOUS PAVEMENT SECTION DETAIL AT A MINIMUM OR THE THE EXISTING PAVEMENT AND AGGREGATE BASE AND SUBBASE DEPTH WHICHEVER IS GREATER.



**PAVEMENT SAWCUT DETAIL**  
NOT TO SCALE

- NOTES:**
- INSTALL ETHERIDGE FOUNDRY CASCO TRAP IN ALL CATCH BASINS WITH A 12" OR 15" OUTLET PIPE.
  - THE CASCO TRAP IS AN ETHERIDGE STYLE DESIGNED TO ELIMINATE CEMENTING OF THE TRAP.
  - TO INSTALL, THE CASCO TRAP IS INSERTED INTO THE SEWER PIPE WITH THE HOOD DOWN.



SIZE	A	B	C	D	E	F	G	H
6"	5 1/2	13 3/8	13 3/8	5 3/8	5 7/8	11 5/8	6 1/2	7 1/4
8"	7 1/2	15	15 3/8	5 1/2	5 3/8	13 3/4	8 3/4	9 3/8
10"	9 1/2	16	16 1/4	6	4 1/2	14 1/8	11 1/2	12 3/8
12"	11 1/2	17	17	8	3 1/2	17	12 1/2	13 3/8
15"	14 1/2	21 3/4	22 3/4	10 1/4	7	20 1/2	14 1/4	15 3/4

**CASCO TRAP DETAIL**  
NOT TO SCALE

PRELIMINARY  
NOT FOR  
CONSTRUCTION

ISSUED FOR	BY
	DATE
REVISION	REV.
	DATE
UTILITIES	WHS
	5/28/11
DRAWING NAME: <b>DETAIL SHEET 2</b> PROJECT NAME: <b>HARBORVIEW DEVELOPMENT, LLC</b> CLIENT: <b>HARBORVIEW DEVELOPMENT, LLC</b> PO BOX 8816, PORTLAND, MAINE 04104	
<b>ACORN ENGINEERING, INC.</b>	
<small>THIS PLAN SHALL NOT BE MODIFIED WITHOUT WRITTEN PERMISSION FROM ACORN ENGINEERING, INC. UNLESS OTHERWISE SHOWN. THE USER'S SOLE RISK AND WITHOUT LIABILITY TO ACORN ENGINEERING, INC.</small>	
FILE: ACORNPLAN	DATE: 12/6/10
JN: 1035	SCALE: N/A
DESIGNED BY: WHS	DRAWN BY: WHS
CHECKED BY: HPS	
DRAWING NO.	C-4