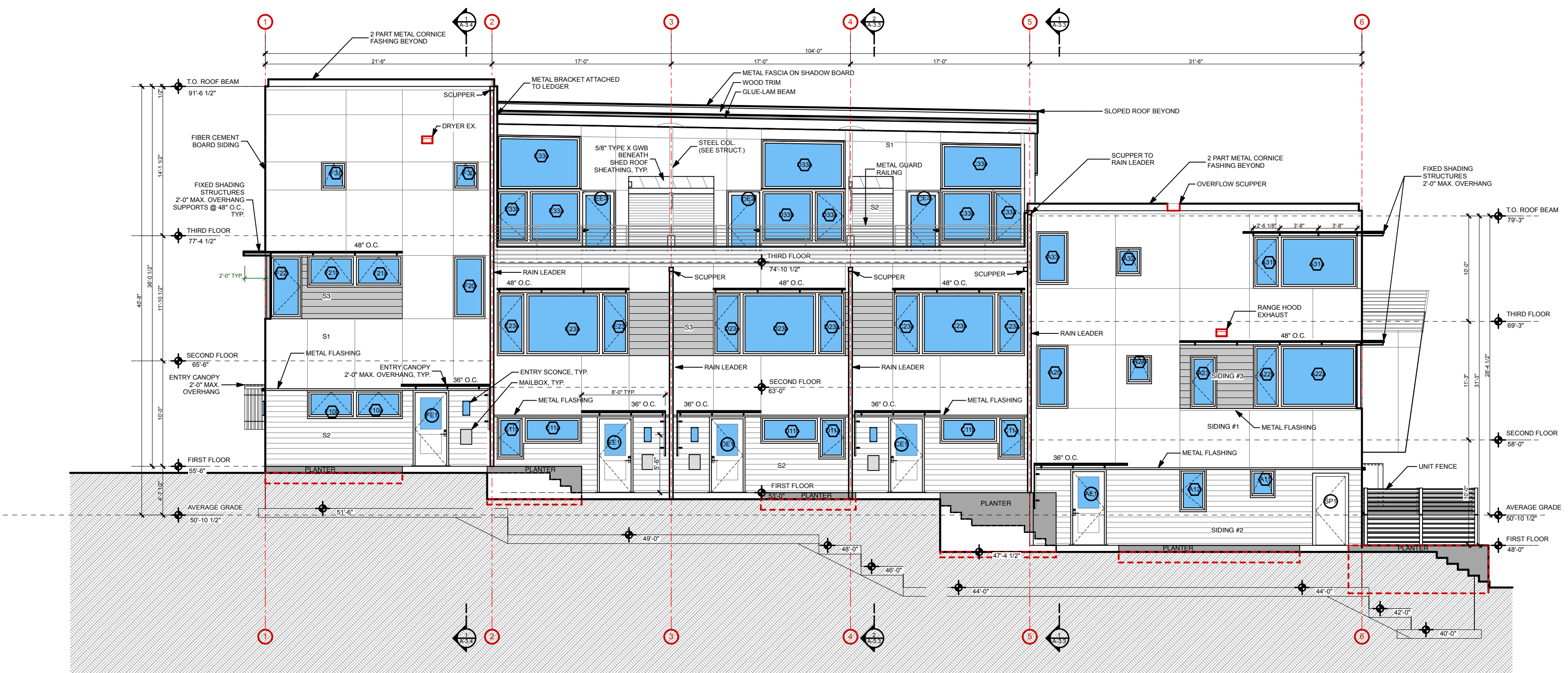


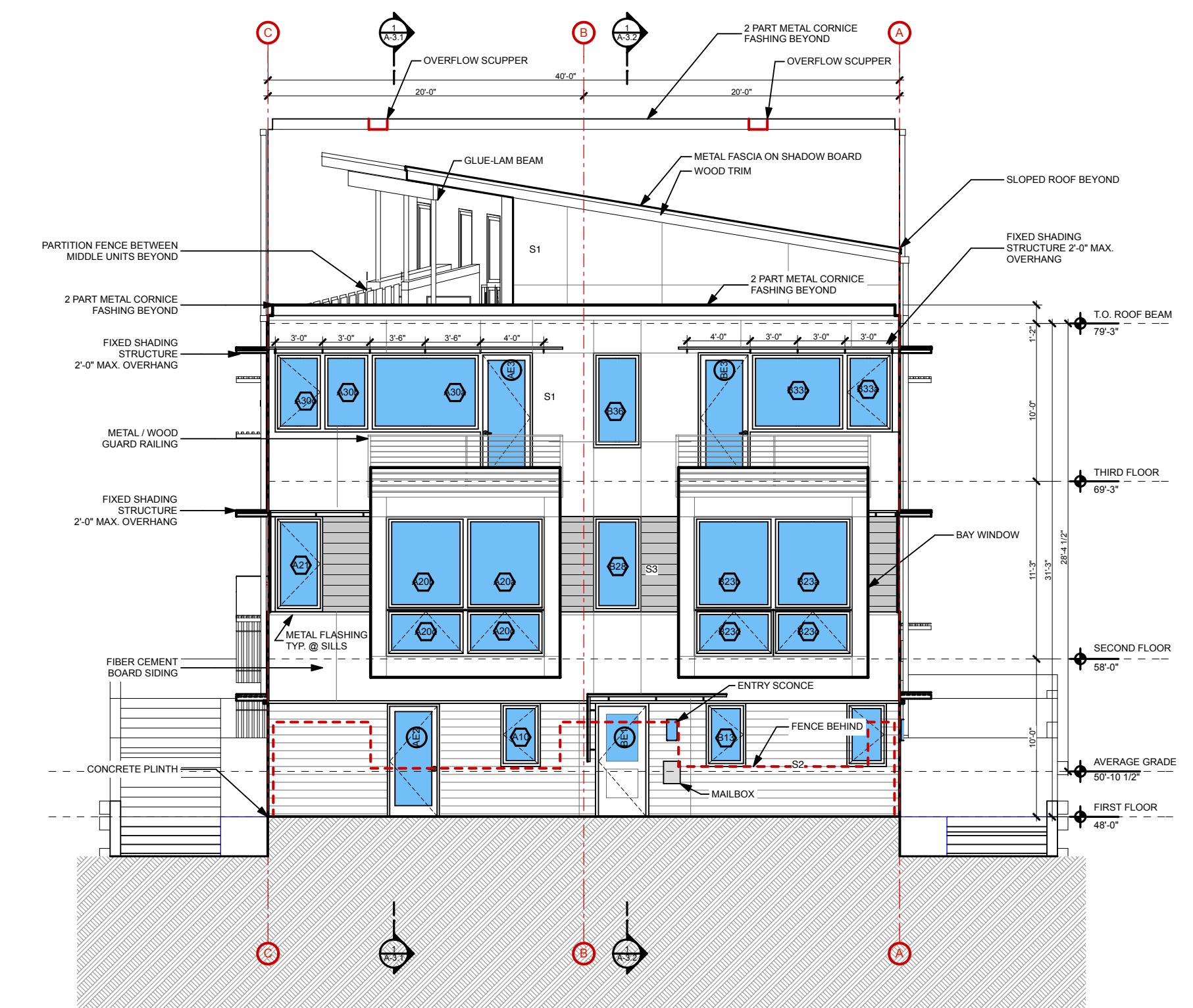
4 NORTHEAST ELEVATION
SCALE: 1/8" = 1'-0"



2 NORTHWEST ELEVATION
SCALE: 1/8" = 1'-0"



3 SOUTHWEST ELEVATION
SCALE: 1/8" = 1'-0"



1 SOUTHEAST ELEVATION
SCALE: 1/8" = 1'-0"