

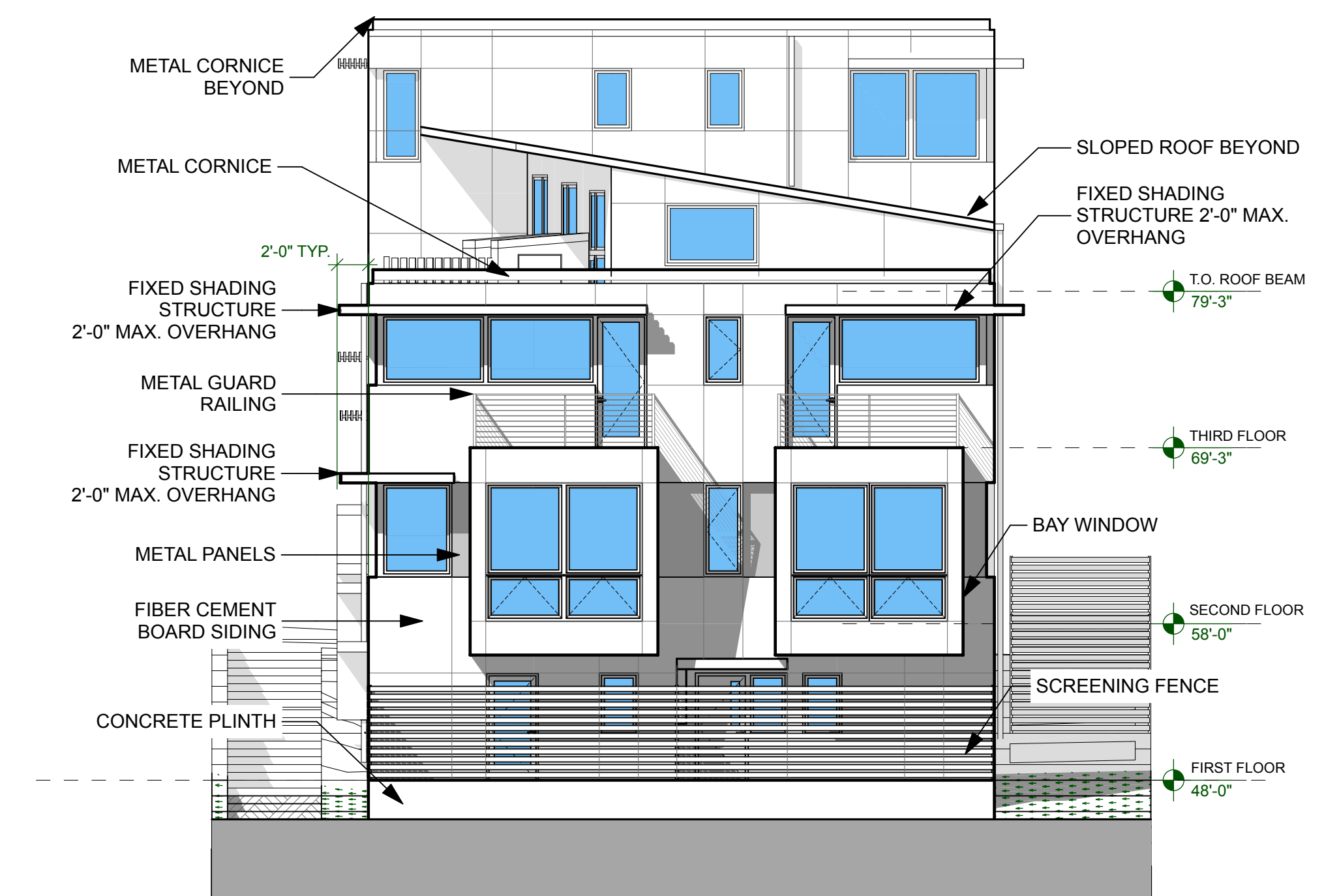
**4** Northeast Elevation  
SCALE: 1/8" = 1'-0"



**2** Northwest Elevation  
SCALE: 1/8" = 1'-0"



**3** Southwest Elevation  
SCALE: 1/8" = 1'-0"



**1** Southeast (Street) Elevation  
SCALE: 1/8" = 1'-0"