

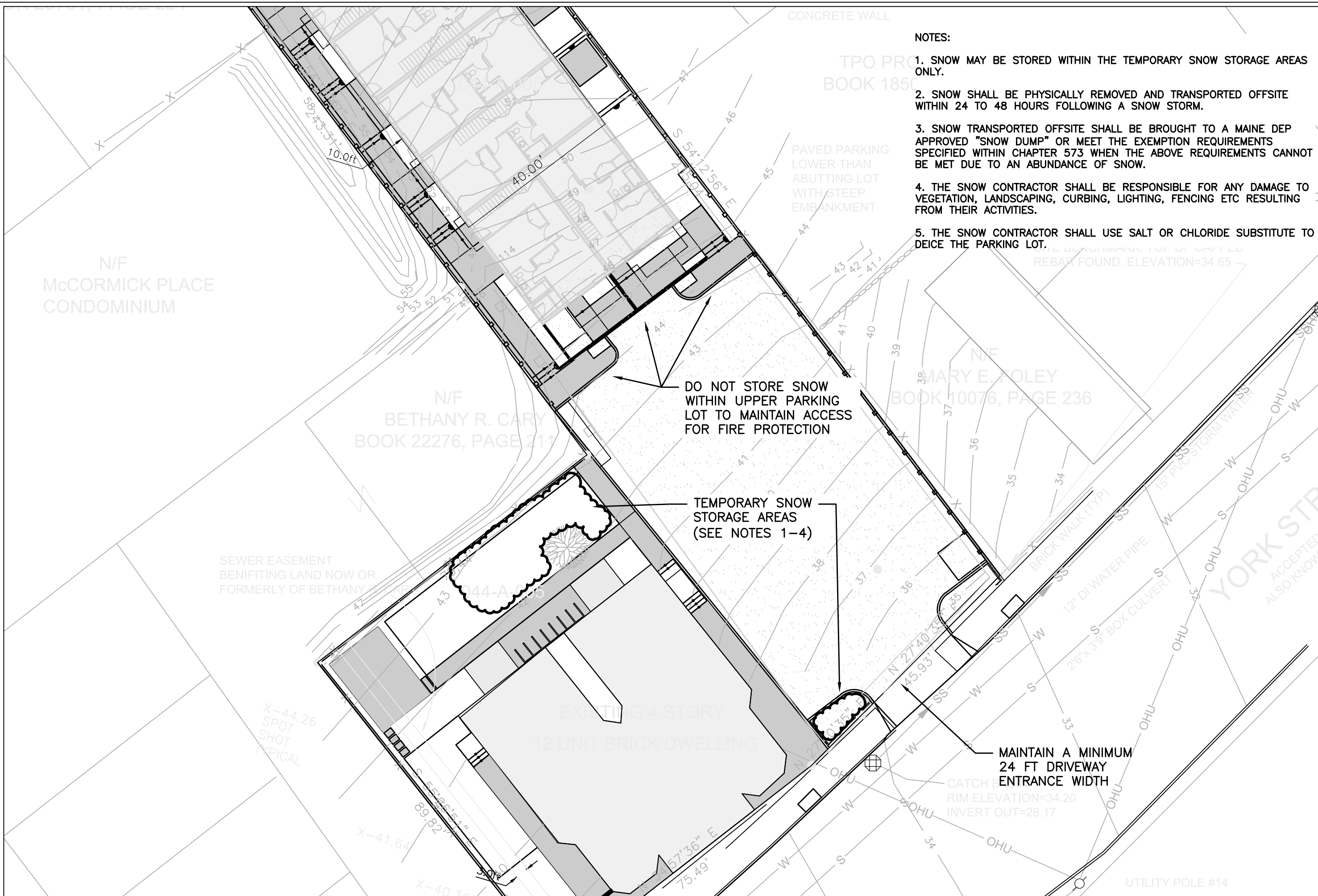
**NOTES:**

1. SNOW MAY BE STORED WITHIN THE TEMPORARY SNOW STORAGE AREAS ONLY.
2. SNOW SHALL BE PHYSICALLY REMOVED AND TRANSPORTED OFFSITE WITHIN 24 TO 48 HOURS FOLLOWING A SNOW STORM.
3. SNOW TRANSPORTED OFFSITE SHALL BE BROUGHT TO A MAINE DEP APPROVED "SNOW DUMP" OR MEET THE EXEMPTION REQUIREMENTS SPECIFIED WITHIN CHAPTER 573 WHEN THE ABOVE REQUIREMENTS CANNOT BE MET DUE TO AN ABUNDANCE OF SNOW.
4. THE SNOW CONTRACTOR SHALL BE RESPONSIBLE FOR ANY DAMAGE TO VEGETATION, LANDSCAPING, CURBING, LIGHTING, FENCING ETC RESULTING FROM THEIR ACTIVITIES.
5. THE SNOW CONTRACTOR SHALL USE SALT OR CHLORIDE SUBSTITUTE TO DEICE THE PARKING LOT.

DO NOT STORE SNOW WITHIN UPPER PARKING LOT TO MAINTAIN ACCESS FOR FIRE PROTECTION

TEMPORARY SNOW STORAGE AREAS (SEE NOTES 1-4)

MAINTAIN A MINIMUM 24 FT DRIVEWAY ENTRANCE WIDTH



N/F McCORMICK PLACE CONDOMINIUM

N/F BETHANY R. CARY BOOK 22276, PAGE 211

N/F MARY E. TOLEY BOOK 10076, PAGE 236

EXISTING 4 STORY 12 UNIT BRICK DWELLING

YORK STREET

UTILITY POLE #14