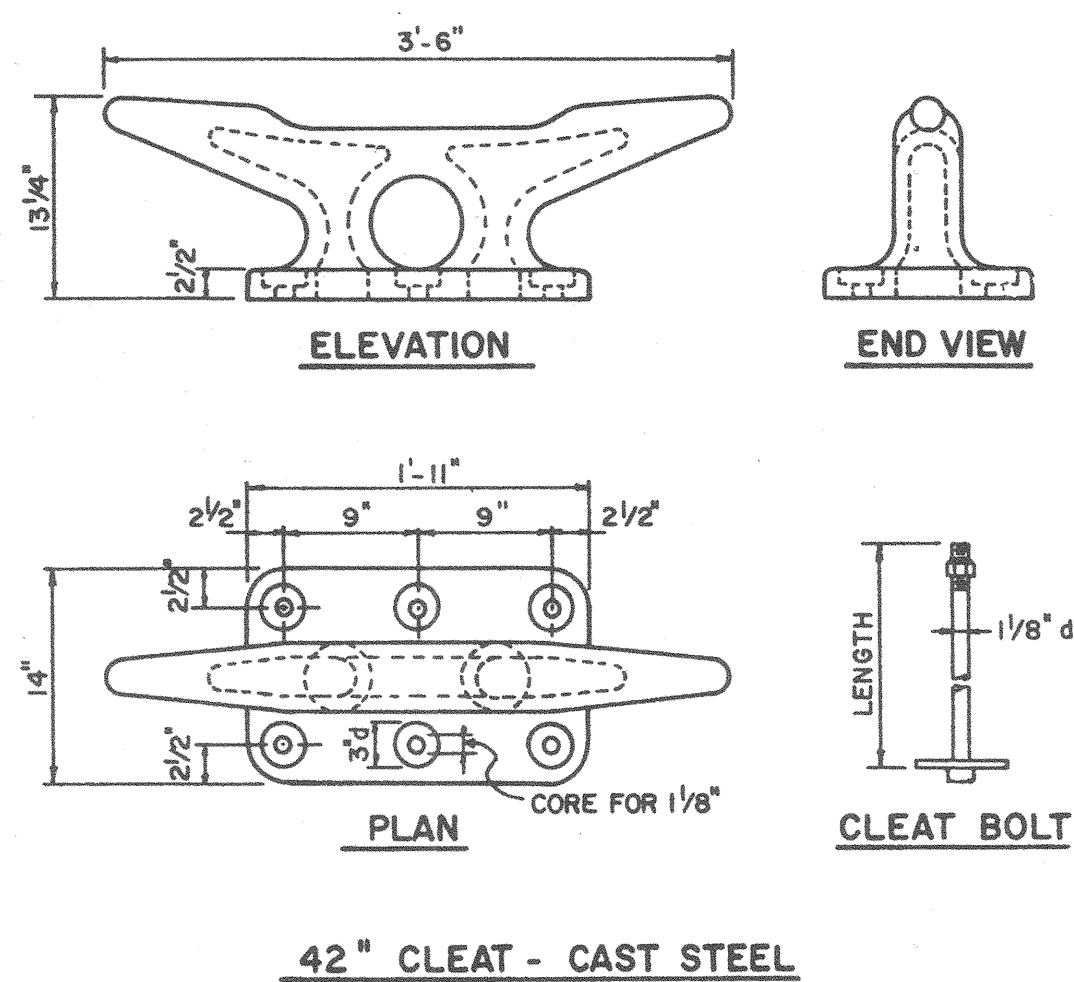
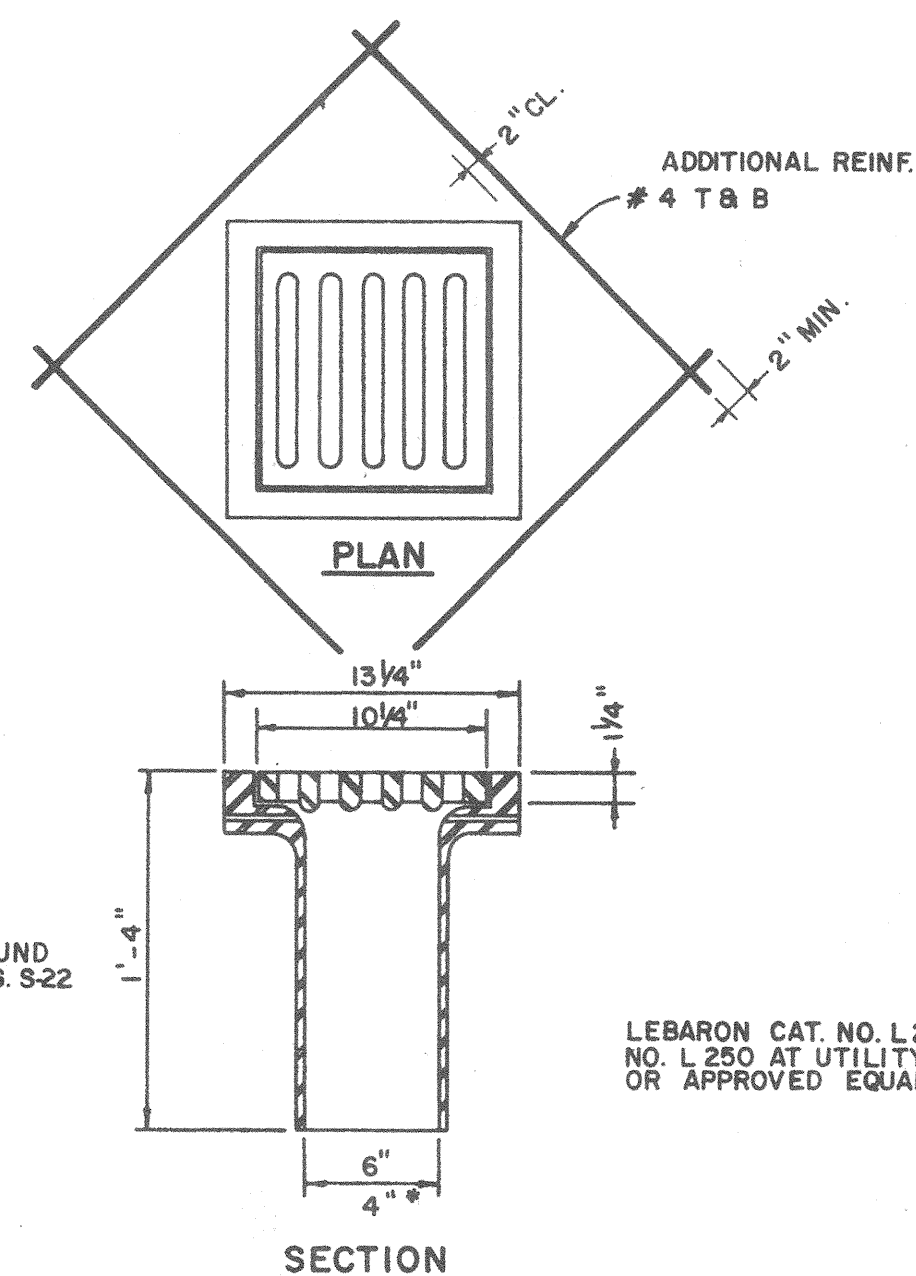
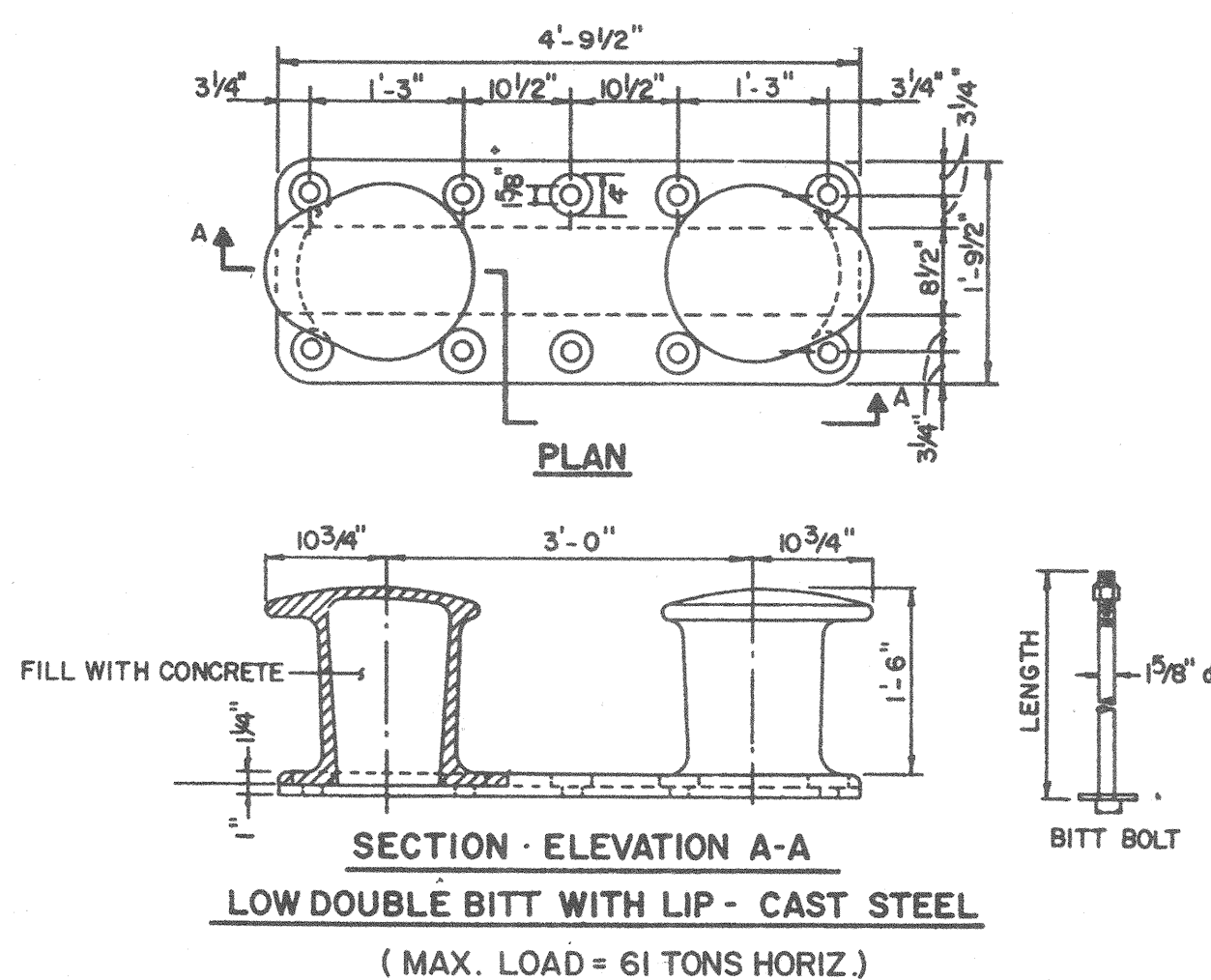
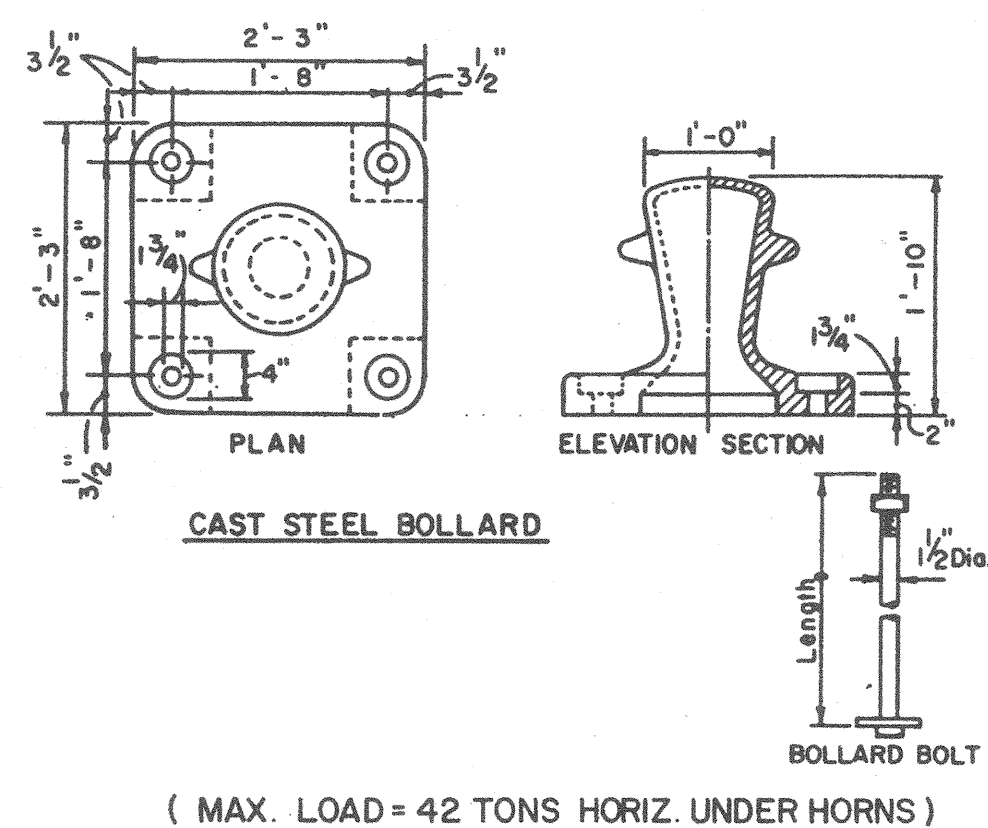
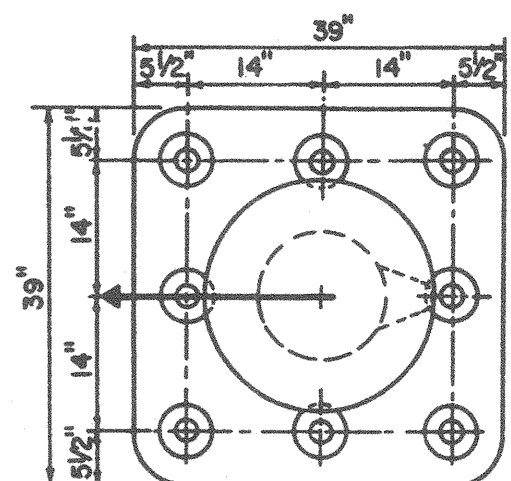
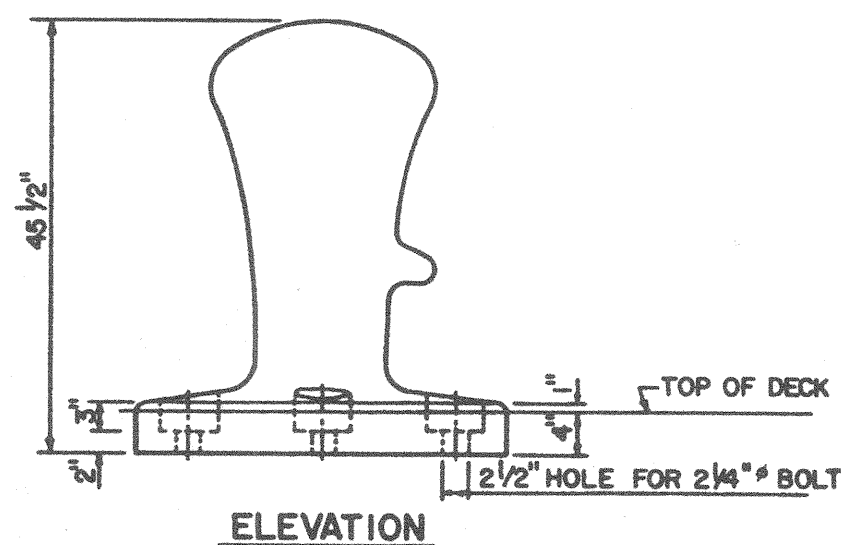


Filename: \\Portland\Projects\203438 Ocean Gateway - Phase 1 Engineering\Project Deliverables\2004-10-27 - Issued for BID\CAD Drawings\Appendix\20343802-R32.dwg, Oct 07, 2004 - 5:49pm



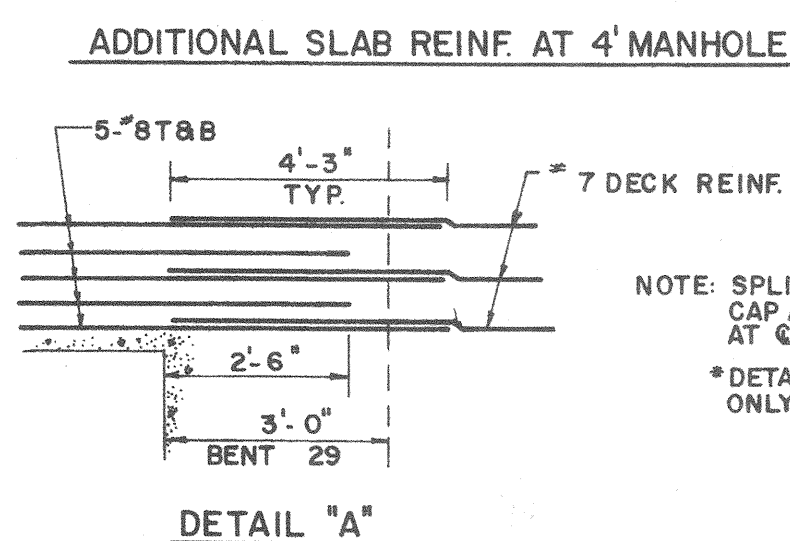
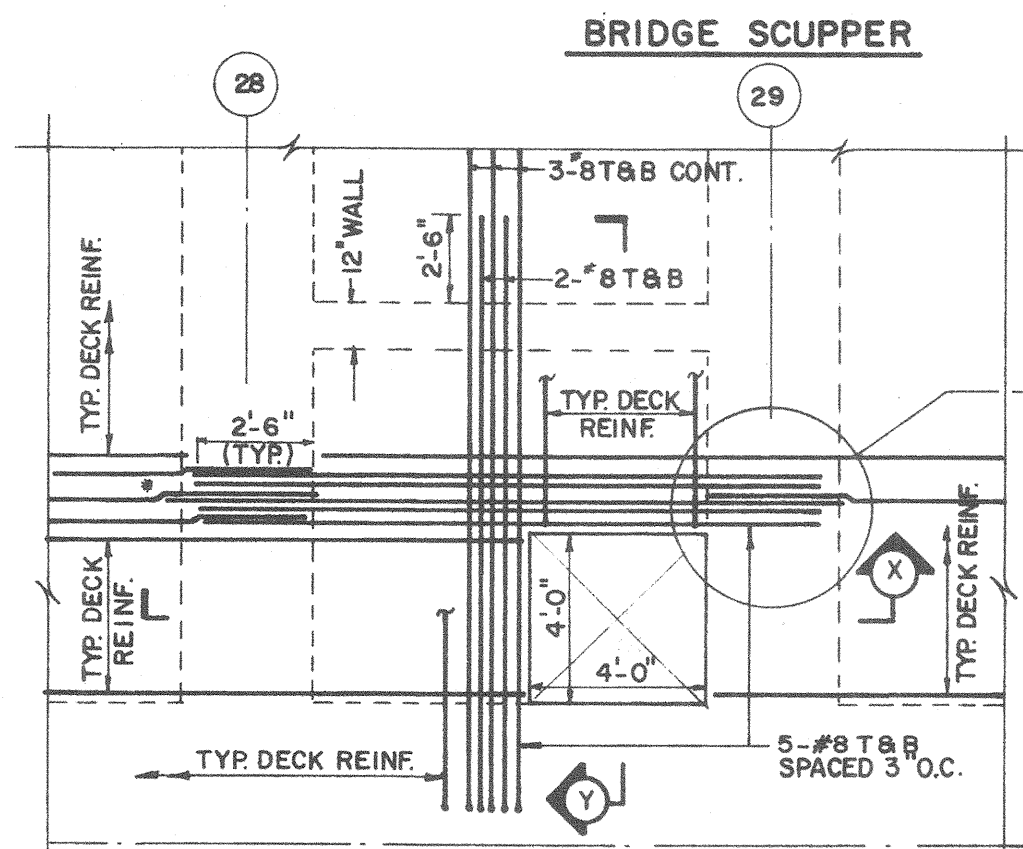
MAXIMUM LOAD, UNDER HORN, @ 45° TO HORIZ. = 108 TONS  
MAXIMUM LOAD, UNDER HORN, HORIZONTALLY = 135 TONS  
ARROW INDICATES DIRECTION OF CALCULATED LOAD.



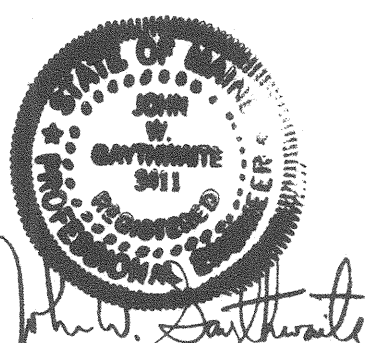
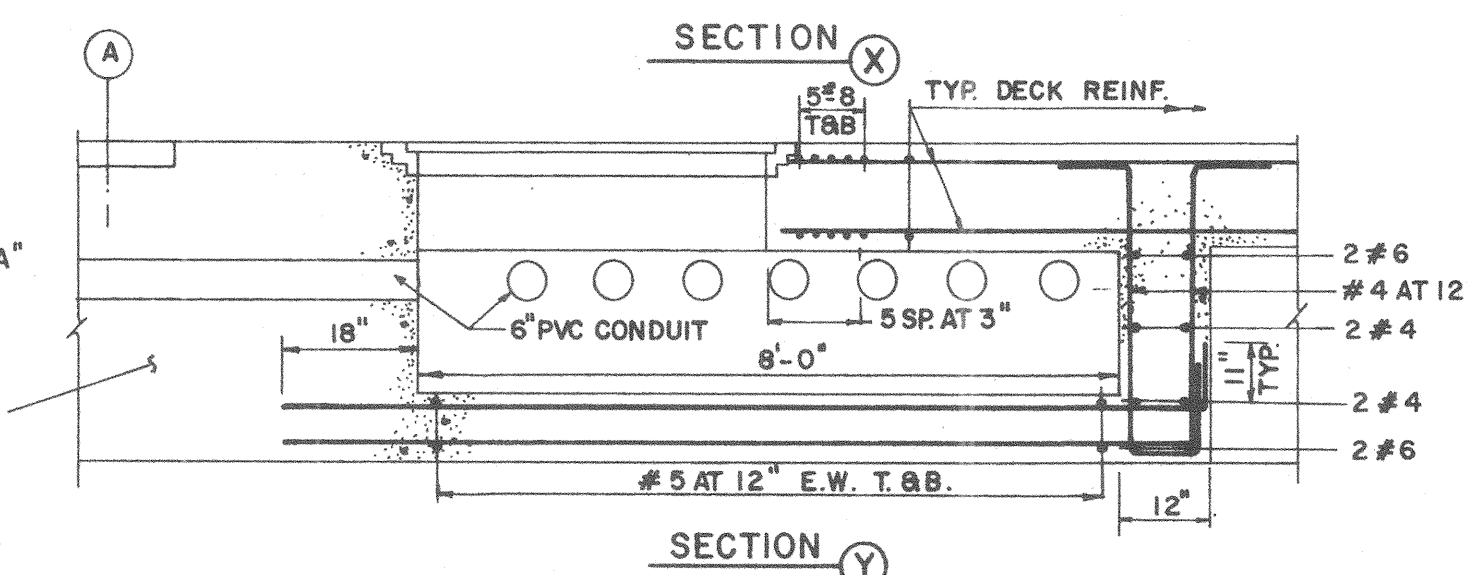
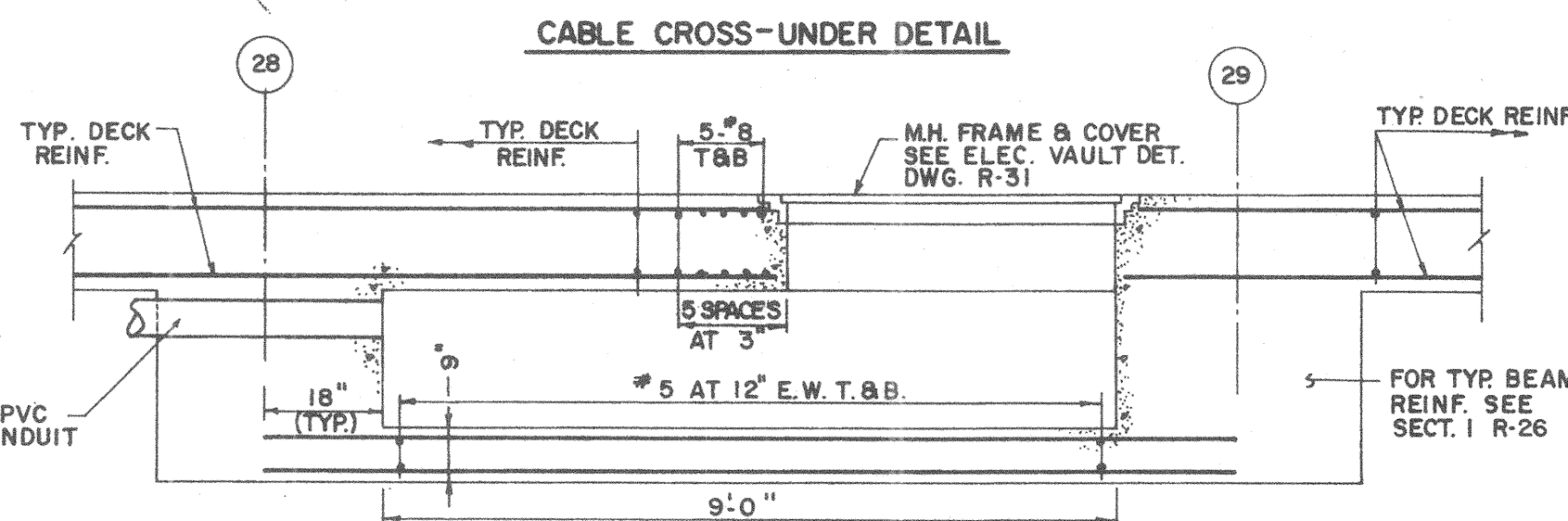
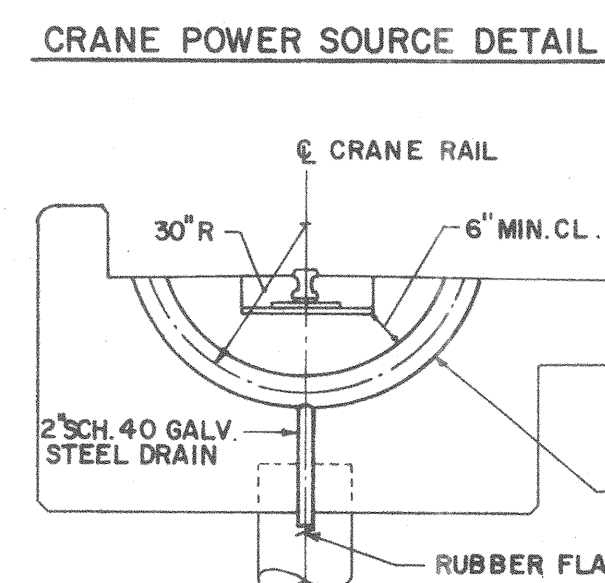
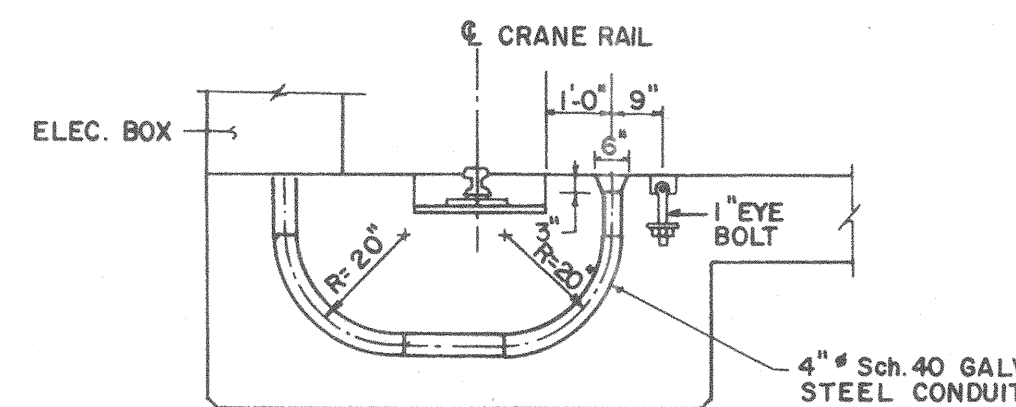
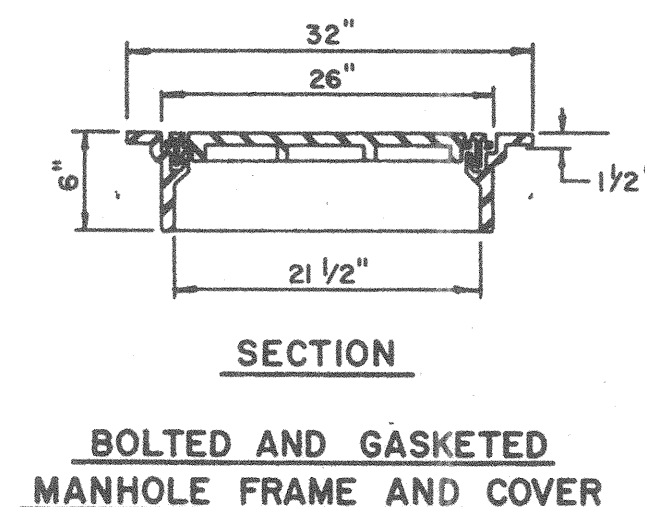
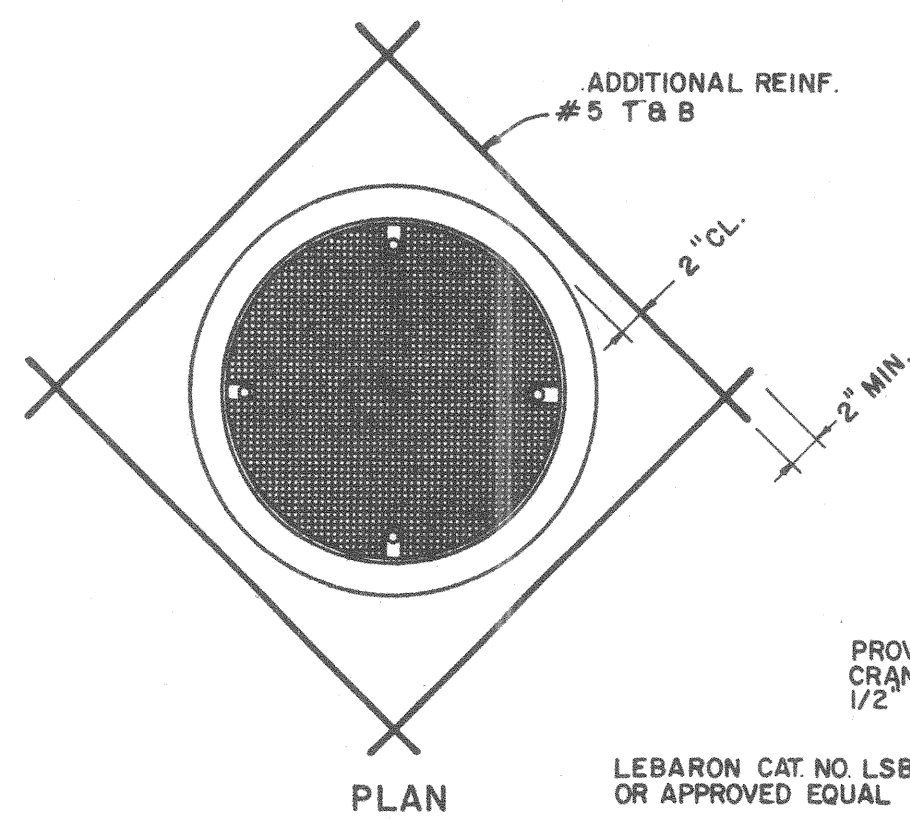
NOTE: FOR ADDITIONAL REINF. AROUND MOORING HARDWARE SEE DWG. S-22

J.C. MACELROY CO. Inc.  
TYPE CSB-6 OR APPROVED EQUAL

LEBARON CAT. NO. L251 AT CRANE RAILS,  
NO. L250 AT UTILITY ENCLOSURE \*  
OR APPROVED EQUALS



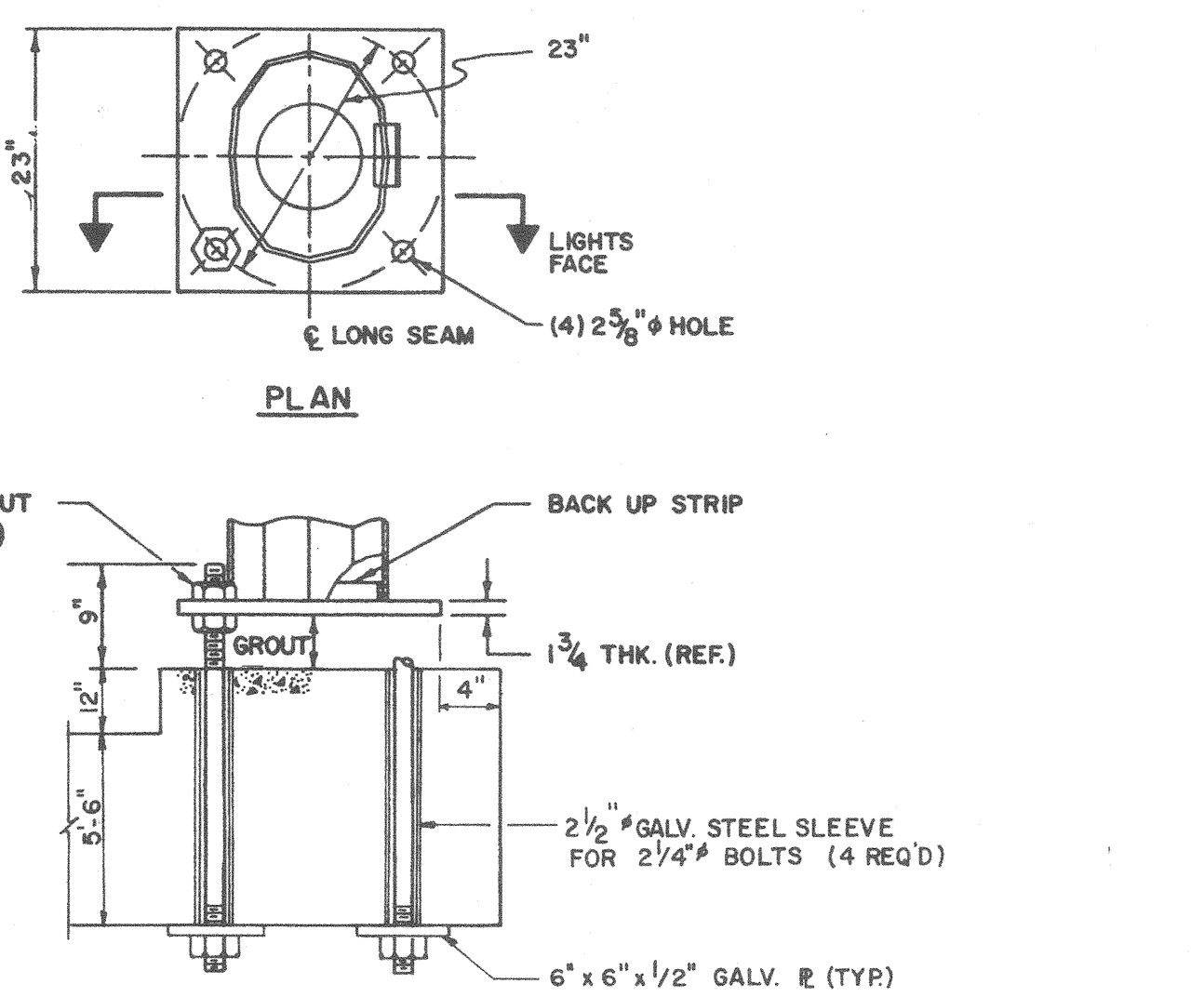
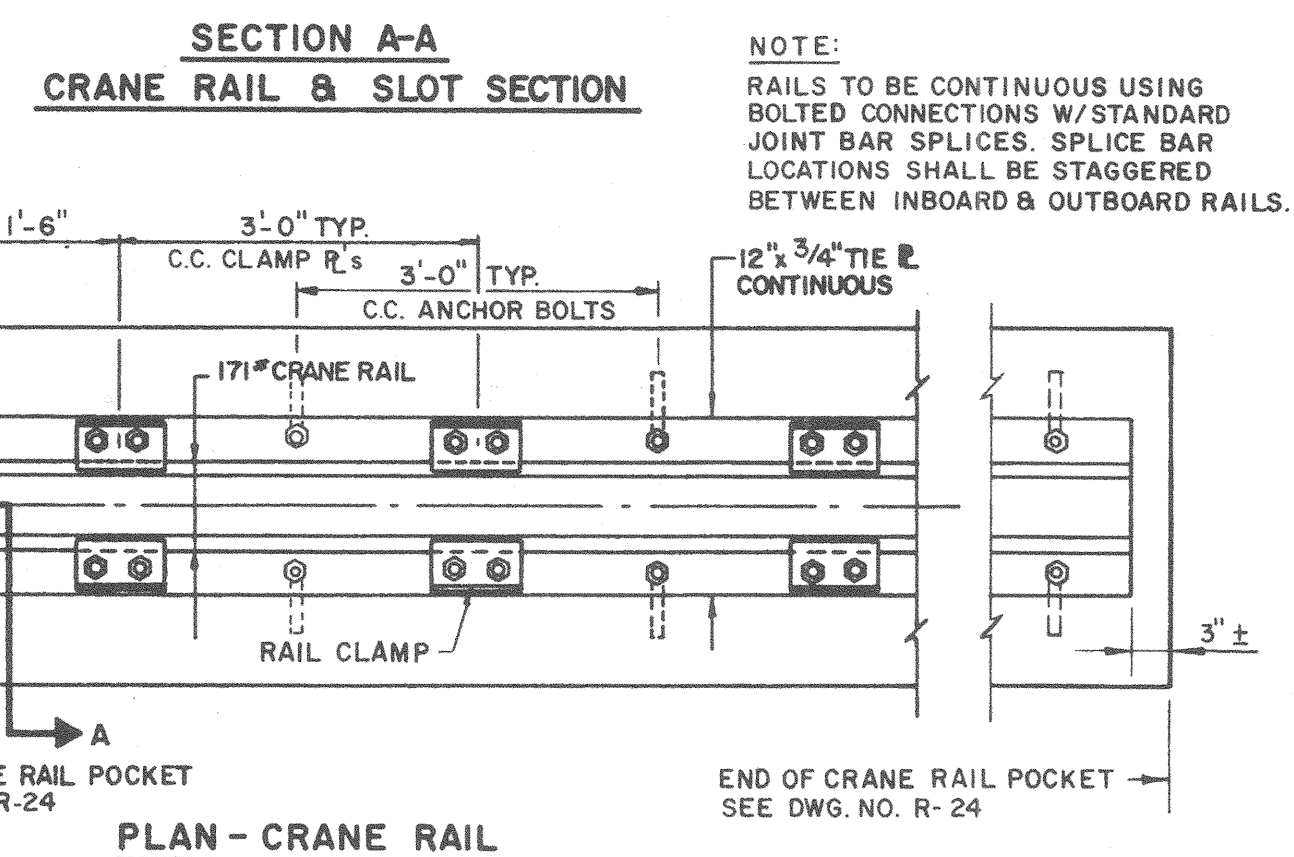
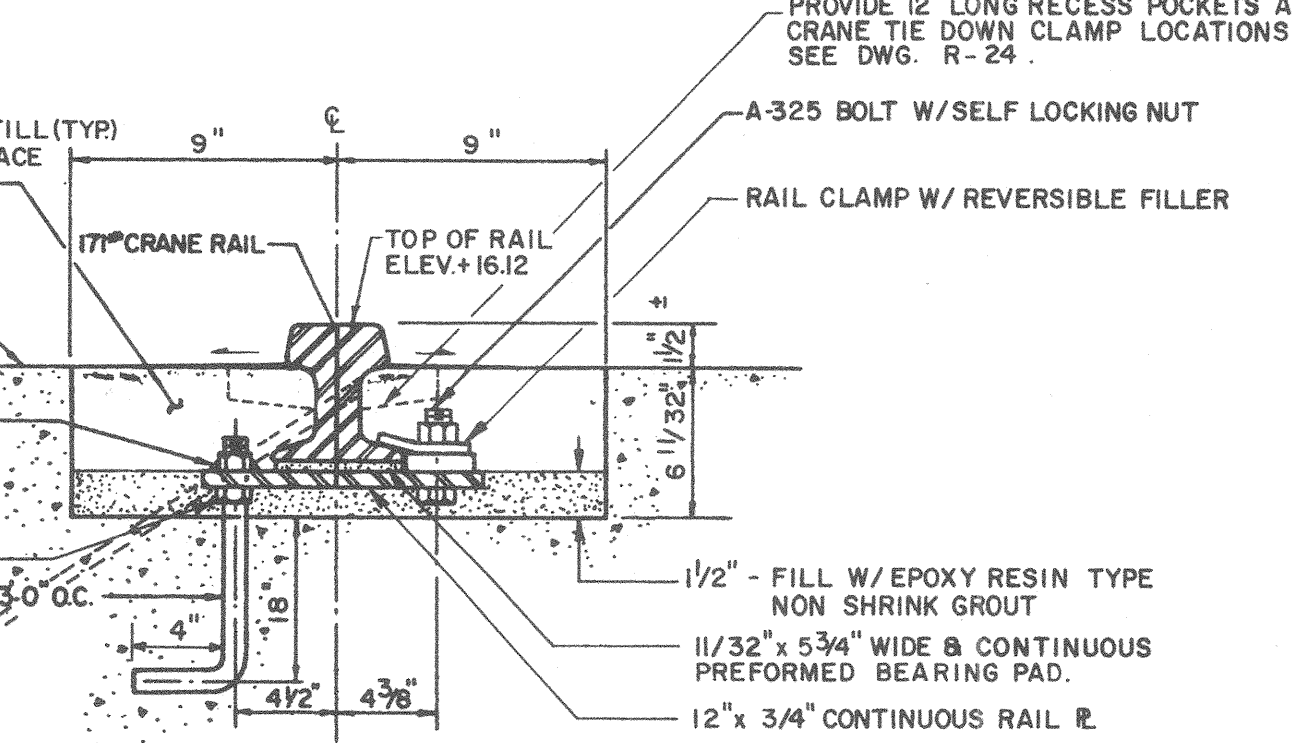
NOTE: SPLICE BOTTOM #8'S OVER PILE CAP AS SHOWN. SPLICE TOP #8'S AT 3' SPAN BETWEEN BENTS.  
\*DETAIL SIMILAR AT BENT #28 ONLY OPPOSITE HAND



John W. Safford

DESIGNED BY:  
DRAWN BY: C.St.P.  
CHECKED BY:  
PROJECT NO: 3995

DATE: APRIL, 1982  
SCALE: NONE



SHEET REDUCED FOR OCEAN GATEWAY BID SET. CHECK SCALE BEFORE USING.

NOTE: DIMENSIONS TO BE VERIFIED WITH MANUFACTURER

BID COPY

ISSUED	
APR 30 1982	
B.I.W. PLANT ENGRS.	
REVISION NO.	DESCRIPTION
TITLE: REPAIR PIER MISCELLANEOUS DETAILS II	
DRAWING NO. R-32	
10532	
B.I.W. DRAWING NO.	

**CE MAQUIRE, INC.**  
Architects + Engineers + Planners  
60 First Avenue, Waltham, Massachusetts 02254

**PORTLAND SHIP REPAIR FACILITY**  
**BATH IRON WORKS CORPORATION**  
Bath, Maine