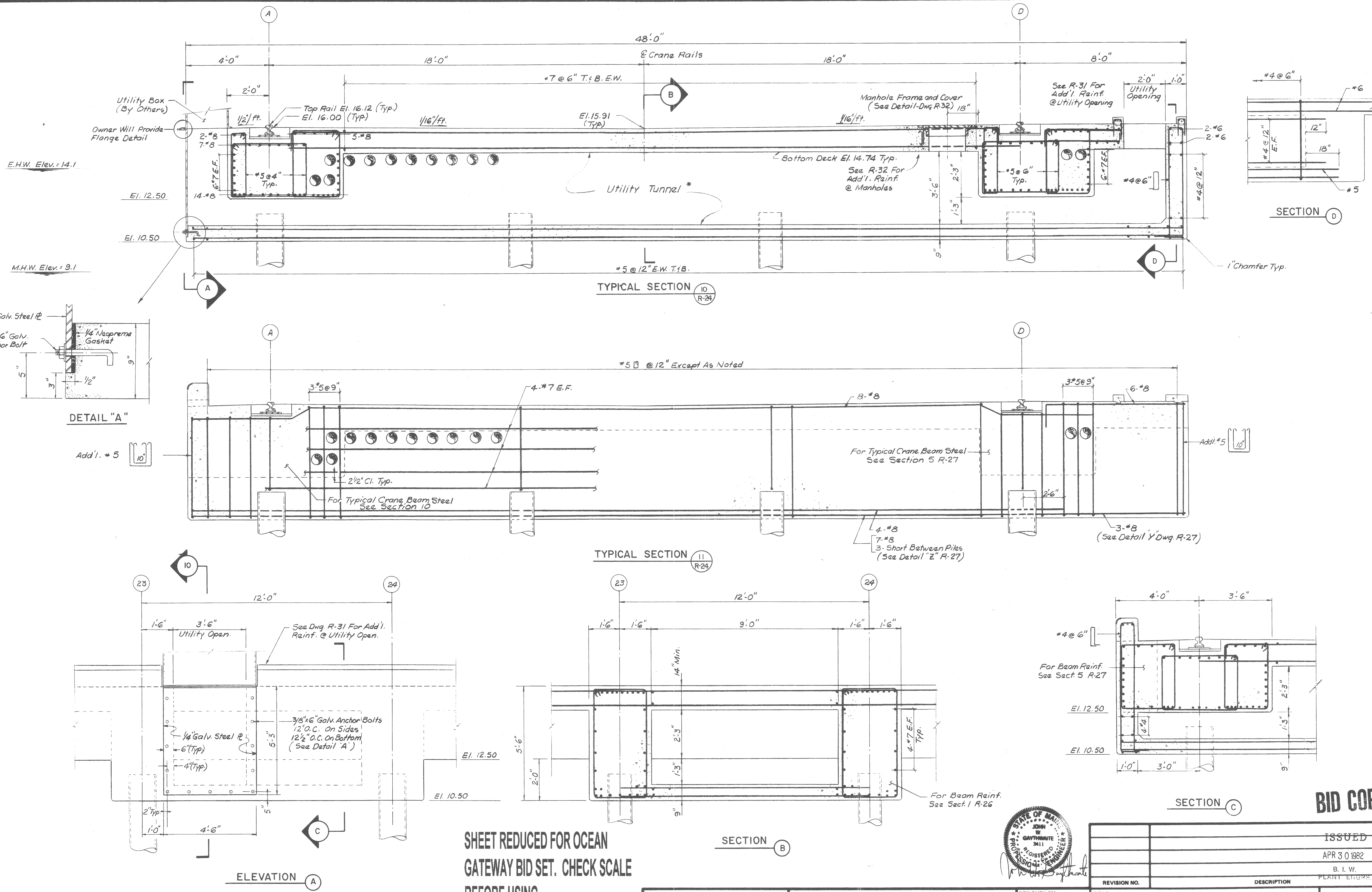


Filename: \\Portland\Projects\203438 Ocean Gateway - Phase 1 Engineering\Project Deliverables\2004-10-27, Issued for BID\CAD Drawings\Appendix\20343802-R28.dwg, Oct 07, 2004 - 5:25pm



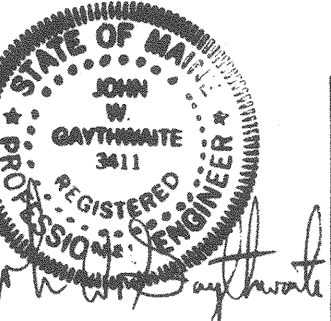
\* NOTE: Utility Tunnels are located between  
Bents 13-14, 23-24, 33-34 & 43-44  
See Dwg. R-24.  
Number Of Conduits @ Beam A  
Varies - See Dwg. R-24

**SHEET REDUCED FOR OCEAN  
GATEWAY BID SET. CHECK SCALE  
BEFORE USING.**



**CE MAGUIRE, INC.**  
Architects • Engineers • Planners  
60 First Avenue, Waltham, Massachusetts 02254

**PORTLAND SHIP REPAIR FACILITY**  
BATH IRON WORKS CORPORATION  
Bath, Maine



DESIGNED BY: R.S.  
DRAWN BY: C.St.P.  
CHECKED BY: R.S. & J.G.  
PROJECT NO: 3995

TITLE:	REPAIR PIER-UTILITY TUNNEL CONCRETE REINFORCING III
DATE:	APRIL, 1982
SCALE:	1/2" = 1'-0"

**BID COPY**

ISSUED	APR 30 1982
B. I. W.	PLANT ENGINEERS
REVISION NO.	DESCRIPTION
<b>R-28</b>	DRAWING NO.
10528	BIW DRAWING NO.