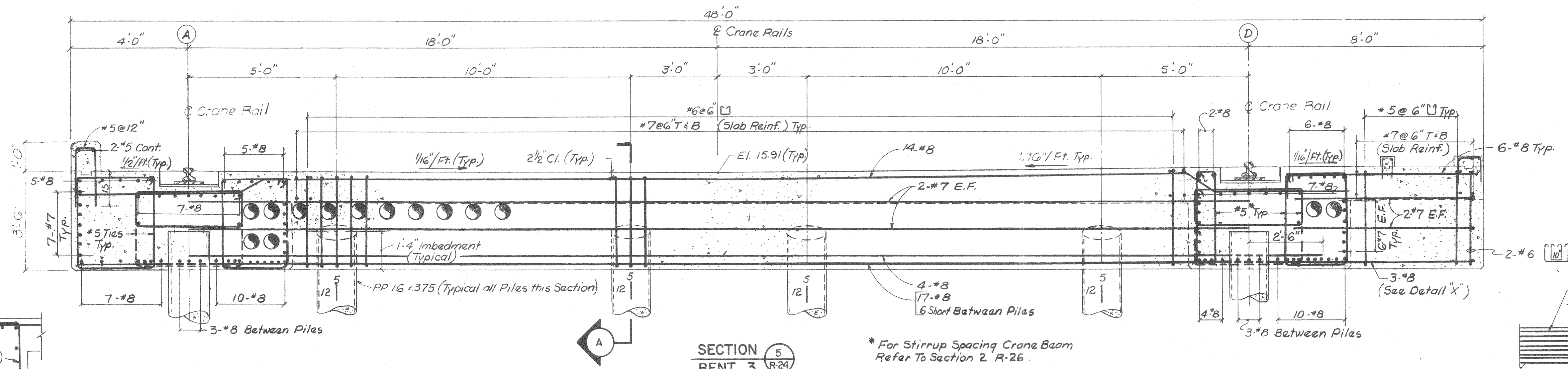
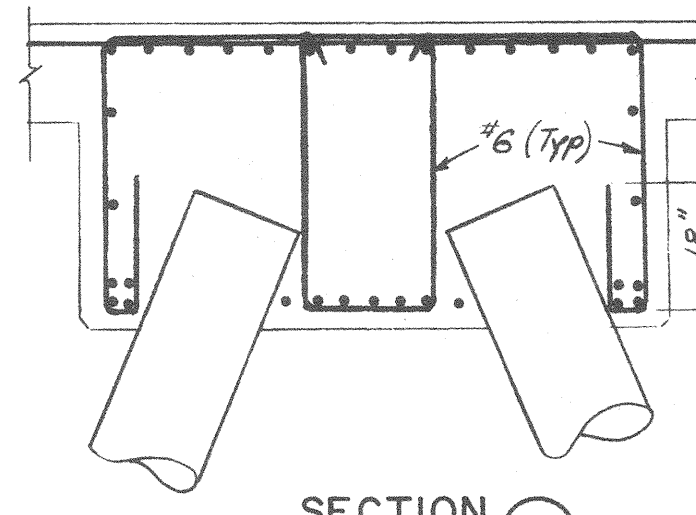


Filename: \\Portland\Projects\203438 Ocean Gateway - Phase 1 Engineering\Project Deliverables\2004-10-27_Issued for BID\CAD Drawings\Appendix\20343802-R27.dwg, Oct. 07, 2004 - 5:24pm

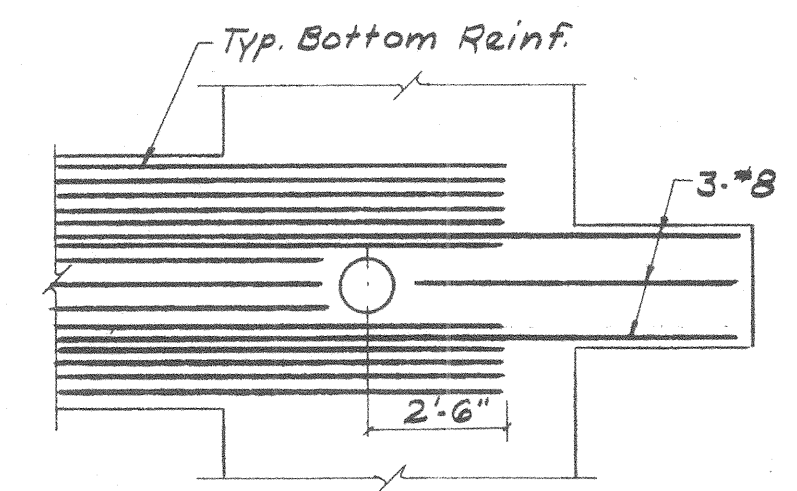


SECTION 5
BENT 3

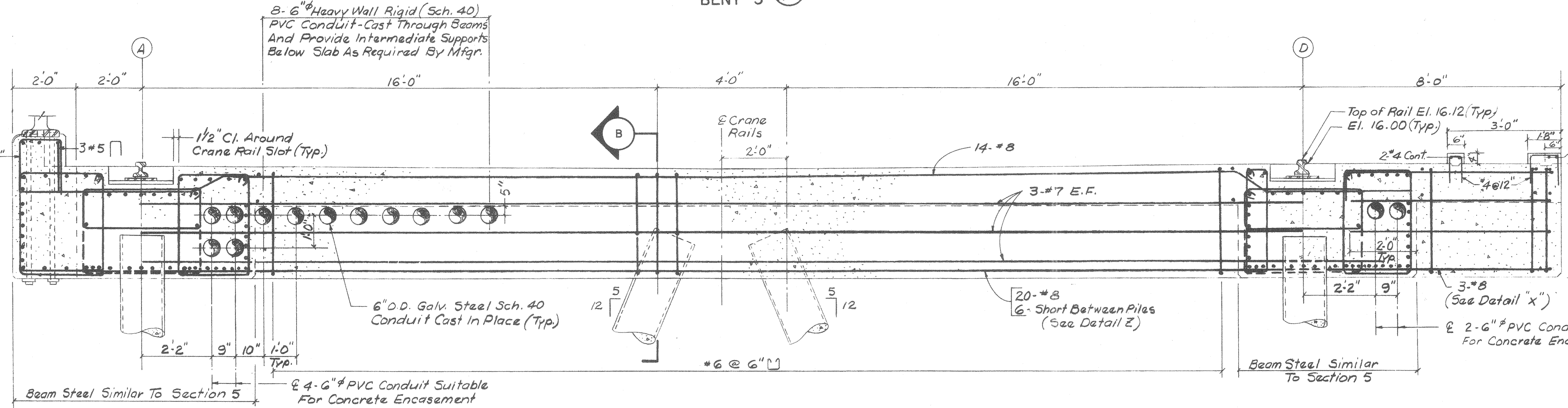
* For Stirrup Spacing Crane Beam Refer To Section 2 R-26.



SECTION A
(STIRRUP DETAIL AT PILES)

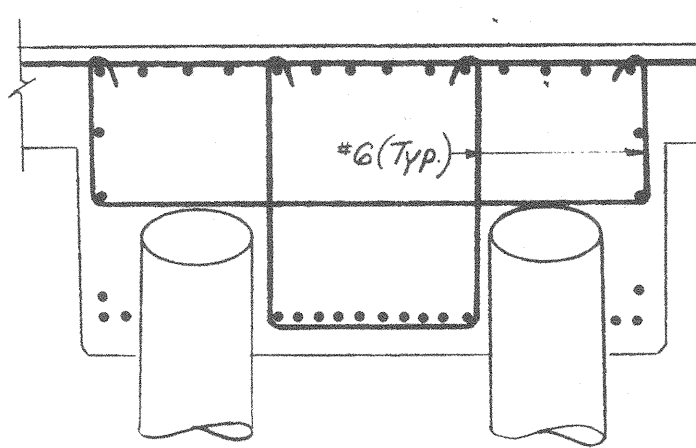


DETAIL "X"
N.T.S.

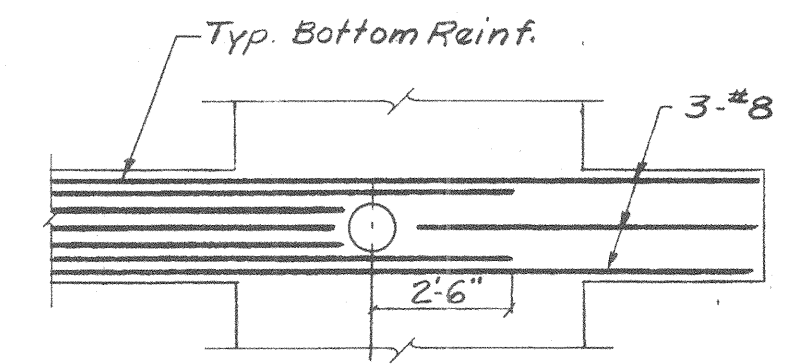


TYPICAL SECTION 8

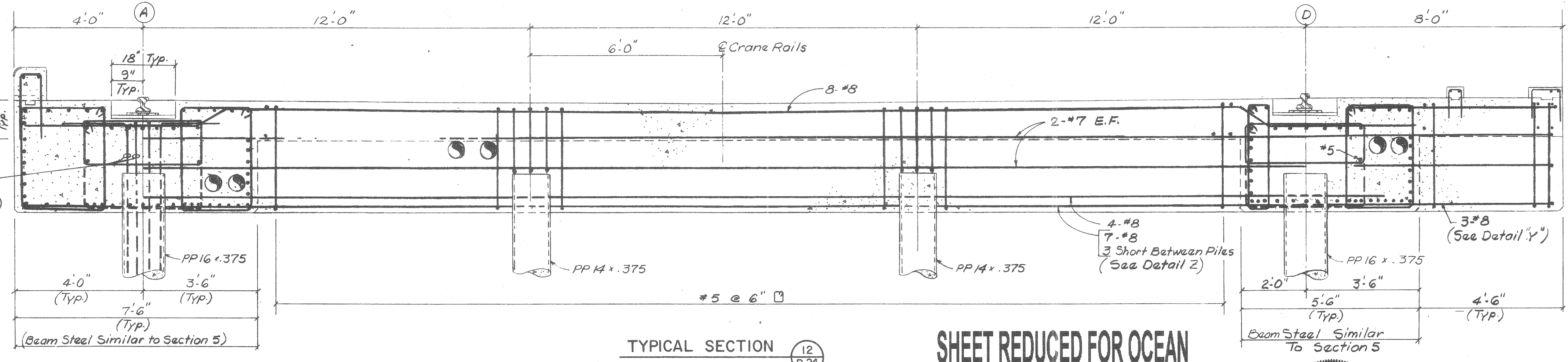
Note: All PVC Conduit To Conform To Requirements Of National Electrical Code.



SECTION B
(STIRRUP DETAIL AT PILES)



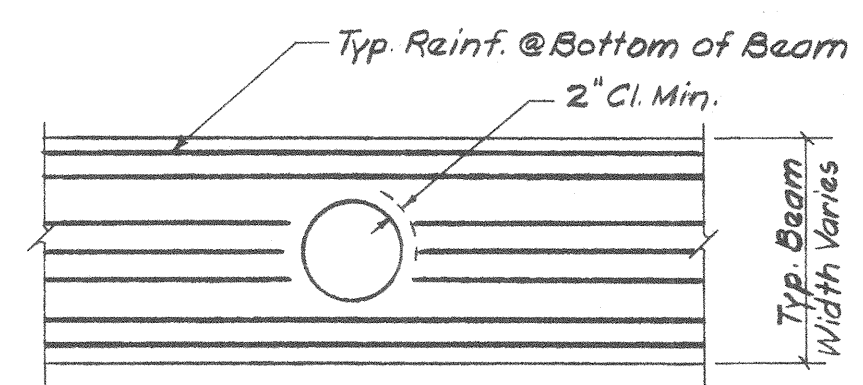
DETAIL "Y"
N.T.S.



TYPICAL SECTION 12

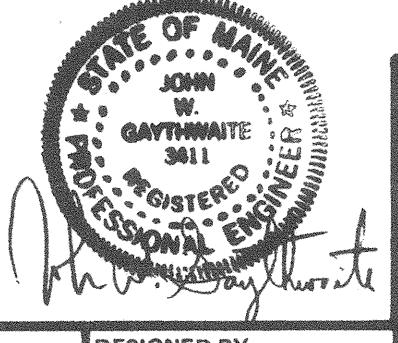
E.H.W. Elev. 14.1
8-#8 Typ. All Piles (See Dwg. R-25)

M.H.W. Elev. 9.1



DETAIL Z
TYP. REINFORCING AT PILES
N.T.S.

SHEET REDUCED FOR OCEAN GATEWAY BID SET. CHECK SCALE BEFORE USING.



ISSUED	
APR 30 1982	
B. I. W. PLANT ERRORS	
REVISION NO.	DESCRIPTION
TITLE: REPAIR PIER CONCRETE REINFORCING II	
DESIGNED BY: R.S.	DRAWING NO. R-27
DRAWN BY: C. St.P.	10527
CHECKED BY: J.G.	BIW DRAWING NO.
PROJECT NO: 3995	DATE: APRIL 1982
SCALE: 1/2" = 1'-0"	

CE MAQUIRE, INC.
Architects • Engineers • Planners
80 First Avenue, Waltham, Massachusetts 02254

PORTLAND SHIP REPAIR FACILITY
BATH IRON WORKS CORPORATION
Bath, Maine

