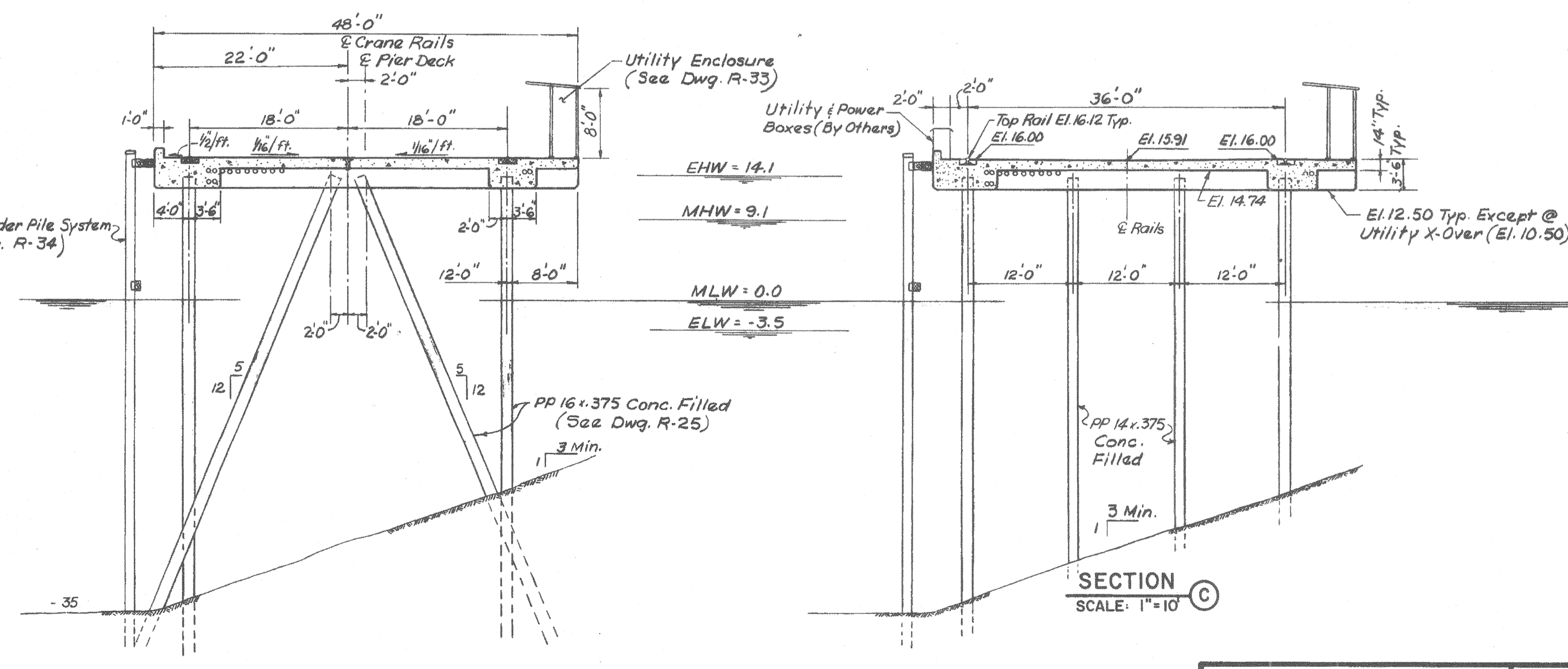
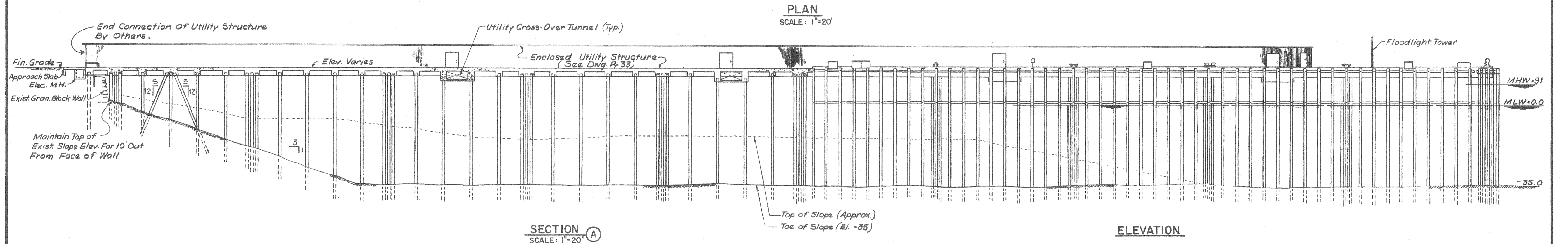
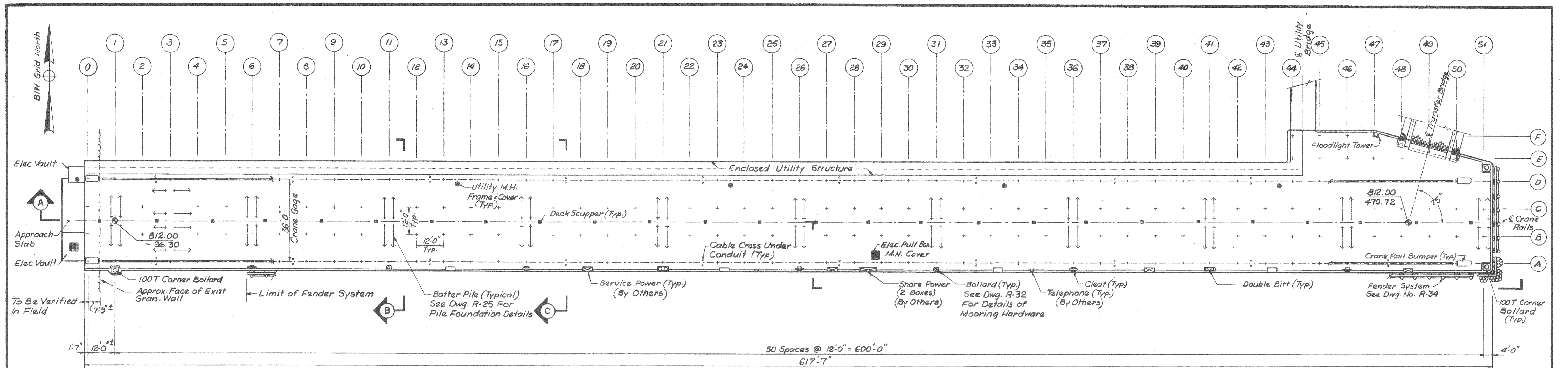


Filename: O:\203438 Ocean Gateway - Phase 1 Engineering\Project Deliverables\2004-10-27, Issued for BID\CAD Drawings\Appendix\Plans\20343802-R23.dwg, Oct 07, 2004 - 5:12pm

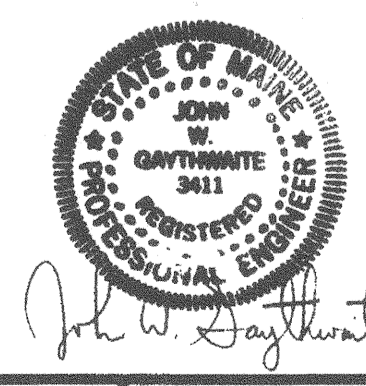


**GENERAL NOTES:**

- ALL MATERIALS AND WORKMANSHIP TO BE IN ACCORDANCE WITH THE APPLICABLE SPECIFICATIONS.
- PIER DECK DESIGNED FOR UNIFORM LIVE LOAD OF 750 PSF OR AASHTO HS20-44 TRUCK LOADING, 12 TON CAPACITY FORK LIFT TRUCK, OR 40 TON HYDRAULIC OR 100 TON TRUCK CRANE TRAVELING ONLY.
- CRANE PACKAGE DESIGNED FOR 90,000 LBS. WHEEL LOAD AT 3'-6" O.C., THREE WHEEL TRUCKS AND MAXIMUM CRANE LIFT = 65 TONS AT 45°.
- CORNER BOLLARDS DESIGNED FOR 100 TONS HORIZONTAL LOAD ANY DIRECTION, INTERMEDIATE BOLLARDS 42 TONS MAXIMUM AND DOUBLE BITTS 60 TONS HORIZONTAL. MAXIMUM LATERAL LOAD AT DECK LEVEL = 2500 LBS. PER LINEAL FOOT TOTAL.
- ALL STRUCTURAL CONCRETE TO HAVE A MINIMUM COMPRESSIVE STRENGTH,  $f'_c = 5000$  PSI AT 28 DAYS AND BE OF PORTLAND TYPE II CEMENT, AIR ENTRAINED IN ACCORDANCE WITH THE SPECIFICATIONS. REINFORCING STEEL TO CONFORM TO ASTM, A-615 AND HAVE A MINIMUM YIELD STRENGTH OF 60,000 PSI.
- ALL EXPOSED CONCRETE EDGES TO BE CHAMFERED 1". MINIMUM COVER TO MAIN REINFORCEMENT IS 2-1/2" CLEAR UNLESS OTHERWISE NOTED.
- FOR DETAILS OF UTILITIES, ELECTRIC POWER AND SHIP SERVICES, ETC. SEE BIN DRAWINGS.
- EXACT LOCATION OF EXISTING GRANITE WALL AND FEATURES TO BE VERIFIED IN THE FIELD.
- ALL EDGES TO BE CHAMFERED 1" EXCEPT AS NOTED.
- ALL BENDS, LAPS AND SPLICES OF REINFORCING STEEL TO BE IN ACCORDANCE WITH ACI 318-77.

**SHEET REDUCED FOR OCEAN GATEWAY BID SET. CHECK SCALE BEFORE USING.**

**BID COPY**



John W. Gauthier

 <b>CE MAQUIRE, INC.</b> Architects • Engineers • Planners 60 First Avenue, Waltham, Massachusetts 02554	 <b>PORTLAND SHIP REPAIR FACILITY</b> <b>BATH IRON WORKS CORPORATION</b> Bath, Maine	DESIGNED BY: J.G./R.S. DRAWN BY: C.St.P. CHECKED BY: J.G. PROJECT NO: 3995	TITLE: <b>REPAIR PIER GENERAL PLAN</b>	<b>R-23</b> DRAWING NO. 10523 BIW DRAWING NO.
		DATE: APRIL, 1982 SCALE: AS NOTED	REVISION NO. DESCRIPTION ISSUED APR 30 1982 B. I. W. PLANT ENGRS.	DATE: APRIL, 1982 SCALE: AS NOTED