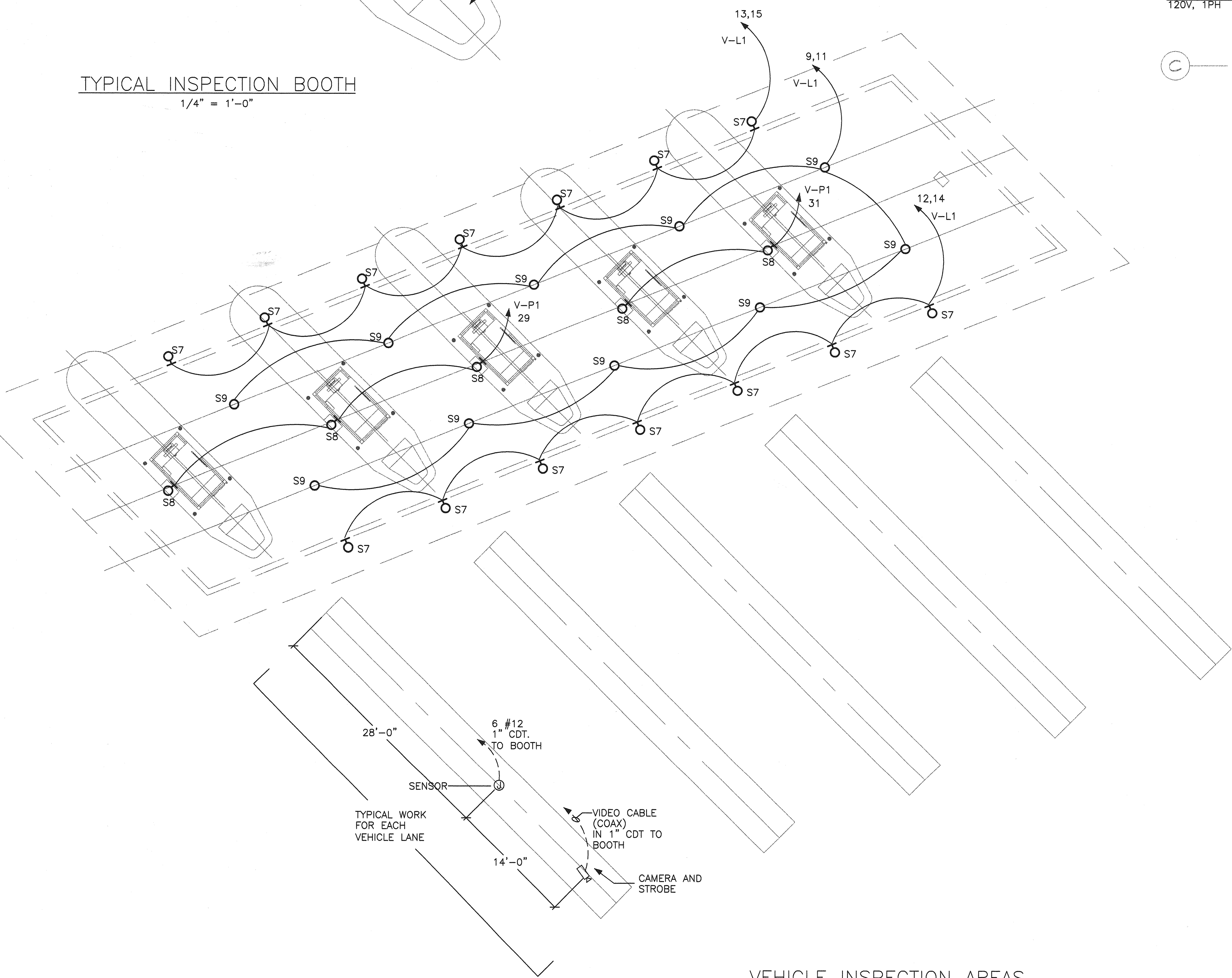
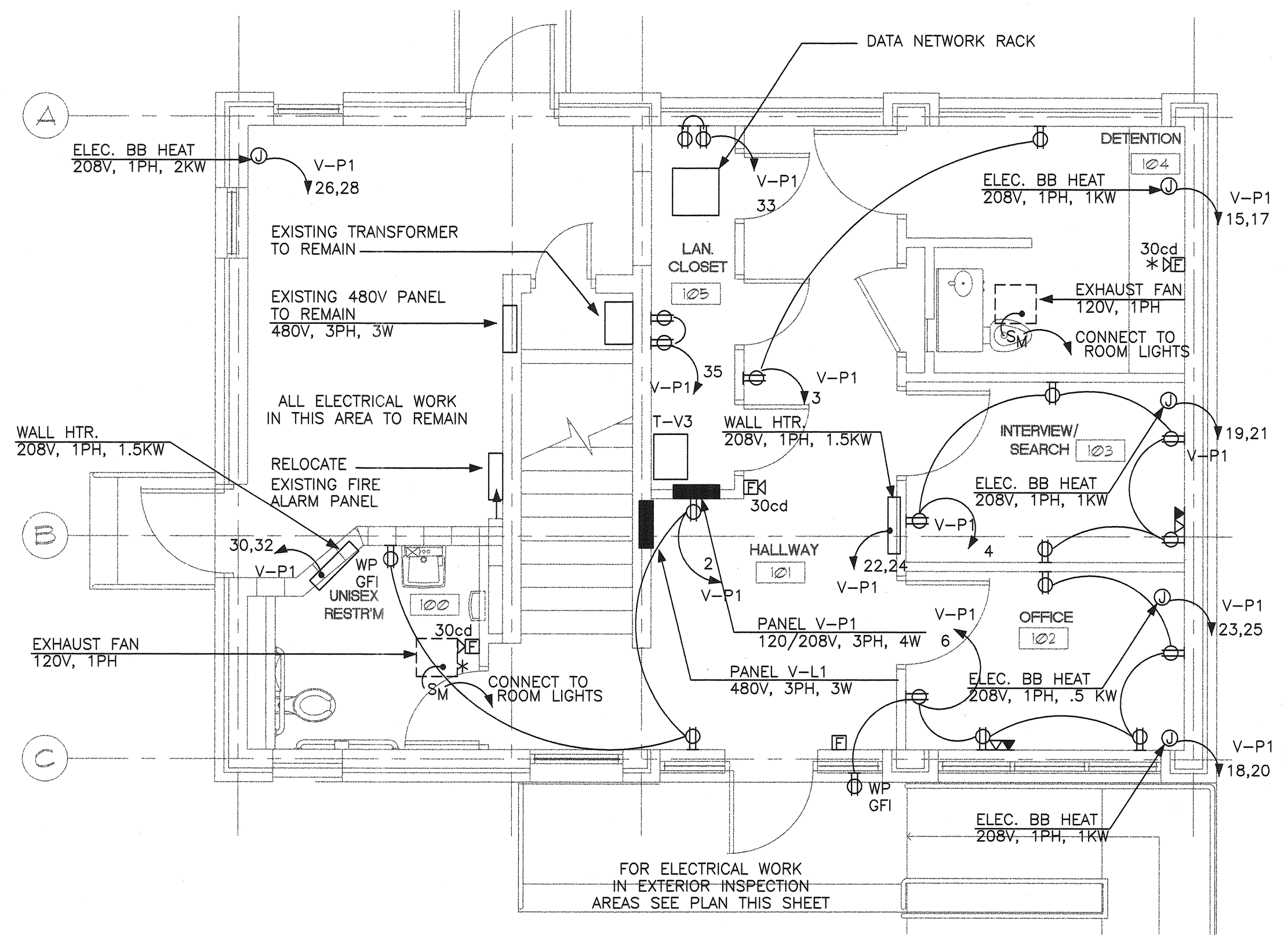


TYPICAL INSPECTION BOOTH  
1/4" = 1'-0"

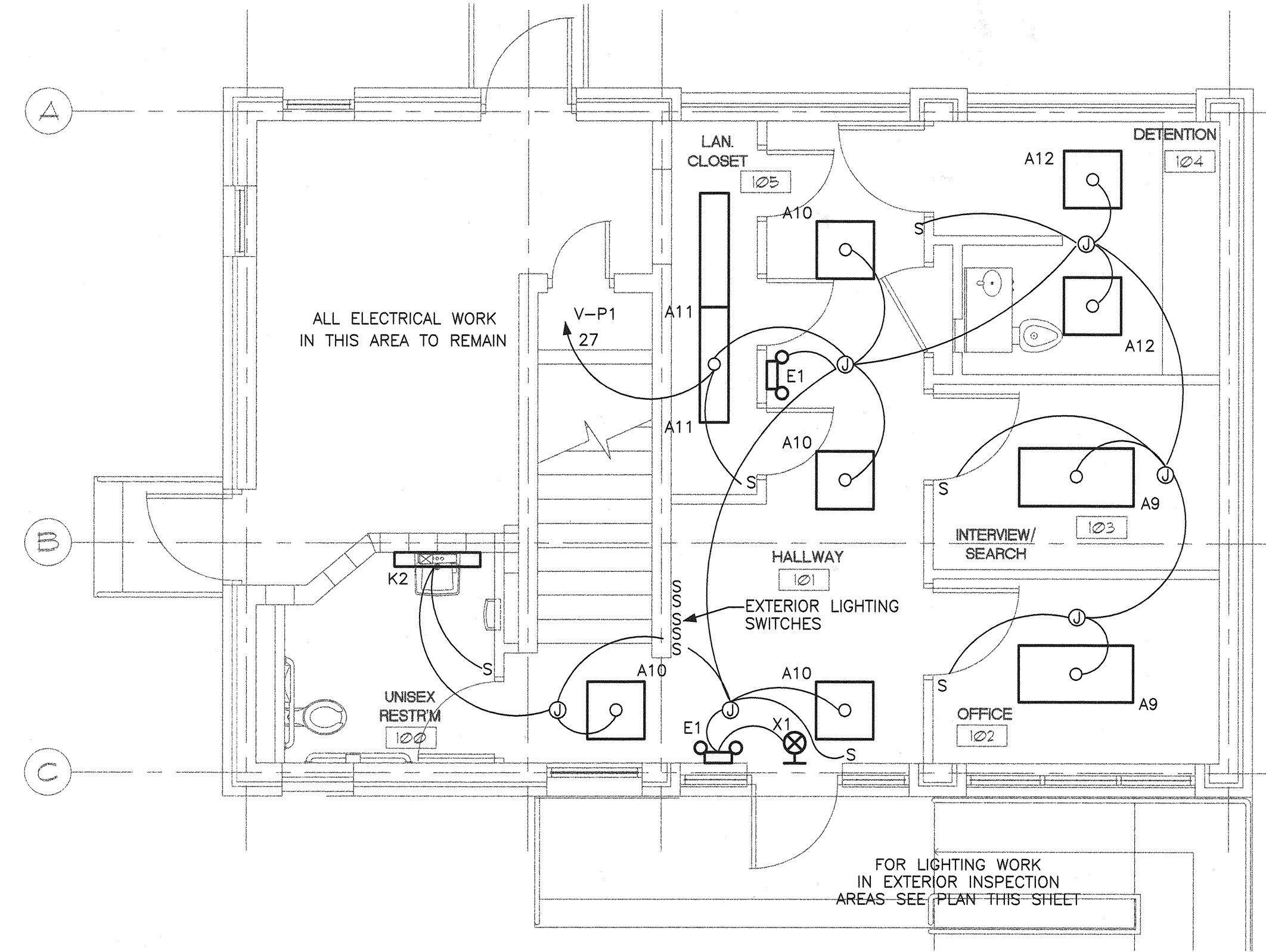
- 1 WIRE DURESS BUTTON BACK TO EXITING SECURITY DESK IN VIS BUILDING. PROVIDE 4 # 12 IN 1" CDT.
- 2 WIRE BOOTH LANE OPEN LIGHT TO BOOTH LIGHTING CIRCUIT WITH # 12 AWG. CONNECT TO SWITCH IN BOOTH.
- 3 WIRE BOOTH TRAFFIC SIGNAL WITH # 12 AWG. CONNECT TO BOOTH LIGHTING CIRCUIT.
- 4 WIRE BOOTH LISCENCE PLATE READER WITH # 12 AWG. CONNECT TO BOOTH POWER CIRCUIT.
- 5 PROVIDE 20 AMPERE 120V CIRCUIT FOR BOOTH POWER. PROVIDE 2 # 10, 1 # 12 GND IN 1" CDT. PROVIDE A SEPARATE CIRCUIT FOR EACH BOOTH (VP-1 # 5,7,9,11 & 13).
- 6 PROVIDE 20 AMPERE 120V CIRCUIT FOR BOOTH LIGHTS. PROVIDE 2 # 10, 1 # 12 GND IN 1" CDT. PROVIDE A SEPARATE CIRCUIT FOR EACH BOOTH (VP-1 # 8,10,12,14 & 16).
- 7 PROVIDE (4) 4-PAIR CAT 6 NETWORK CABLES FOR DATA AND TELEPHONE TO EACH BOOTH. EXTEND CABLES IN 1-1/2" CDT. TO LAN CLOSET 105 IN VIS BUILDING.
- 8 PROVIDE A COAXIAL CABLE IN A 1" CONDUIT FOR EACH BOOTH. EXTEND TO LAN CLOSET 105 IN VIS BUILDING.



VEHICLE INSPECTION AREAS  
1/8" = 1'-0"



VIS BUILDING - POWER  
1/4" = 1'-0"

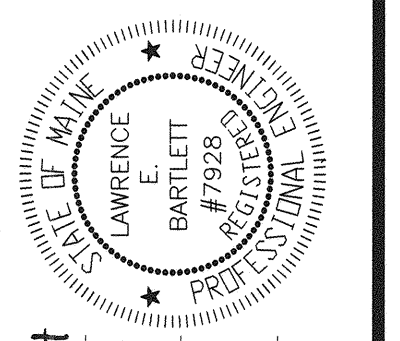


VIS BUILDING - LIGHTING  
1/4" = 1'-0"

- NOTES:  
ALL ELECTRICAL WORK ON SECOND FLOOR OF VIS BUILDING TO REMAIN.  
EXTERIOR LIGHT SWITCHES:
- |  |              |
|--|--------------|
| DPST CANOPY EXIT LIGHTS (TYPE S7)          | V-L1 # 13,15 |
| DPST CANOPY ENTRANCE LIGHTS (TYPE S7)      | V-L1 # 12,14 |
| DPST CANOPY LIGHTS (TYPE S9)               | V-L1 # 9,11  |
| SPST CANOPY INSPECTION LIGHTS (TYPE S8)    | V-P1 # 29    |
| SPST CANOPY INSPECTION LIGHTS (TYPE S8)    | V-P1 # 31    |
| DPST CANOPY AREA LIGHTS (TYPE S1, S3, S5)  | V-L1 # 8,10  |
| DPST QUEUING LIGHTS (TYPE S1)              | V-L1 # 2,4   |
| DPST CENTER QUEUING LIGHTS (TYPE S2)       | V-L1 # 1,3   |
| DPST CENTER QUEUING FLOODLIGHTS (TYPE S18) | V-L1 # 5,7   |

**Bartlett Design**  
LIGHTING & ELECTRICAL ENGINEERING  
945 WASHINGTON STREET, BATH, ME 04530  
TEL (207) 443-9447 FAX (207) 443-5660

STATE OF MAINE  
DEPARTMENT OF TRANSPORTATION  
PROJECT NUMBER 009215.00  
PIN 009215.00



Lawrence E. Bartlett  
SIGNATURE  
7928  
P.E. NUMBER  
10/27/04  
DATE

DATE	10/27/04
BY	JC
PROG. MANAGER	PAUL POTTE
DESIGN-DETAILED	LEB
CHECKED-REVIEWED	LEB
DESIGN-DETAILED2	LEB
DESIGN-DETAILED3	
REVISIONS 1	
REVISIONS 2	
REVISIONS 3	
REVISIONS 4	
FIELD CHANGES	

CITY OF PORTLAND  
OCEAN GATEWAY PHASE 1  
VEHICLE INSPECTION BUILDING

E100-V