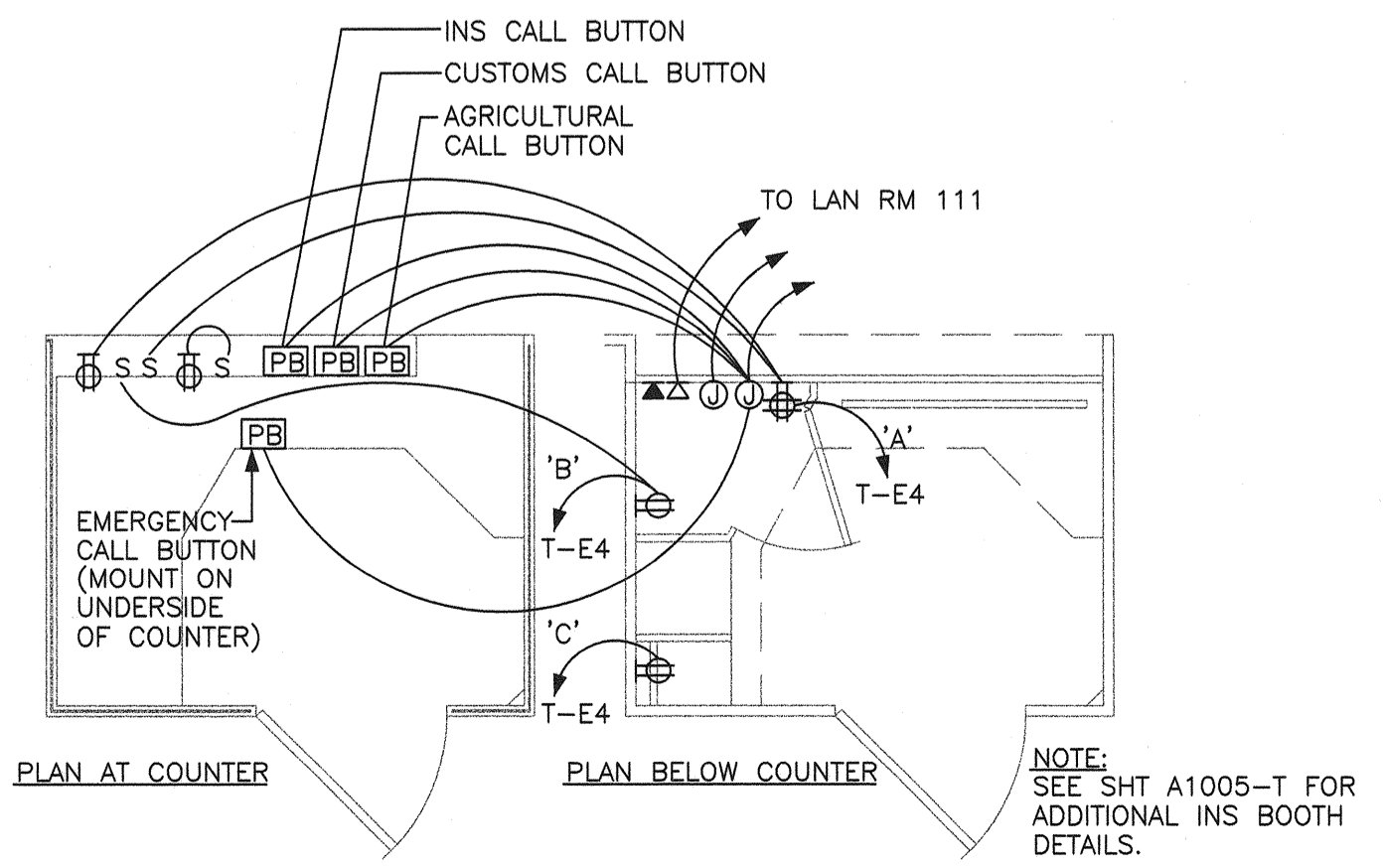
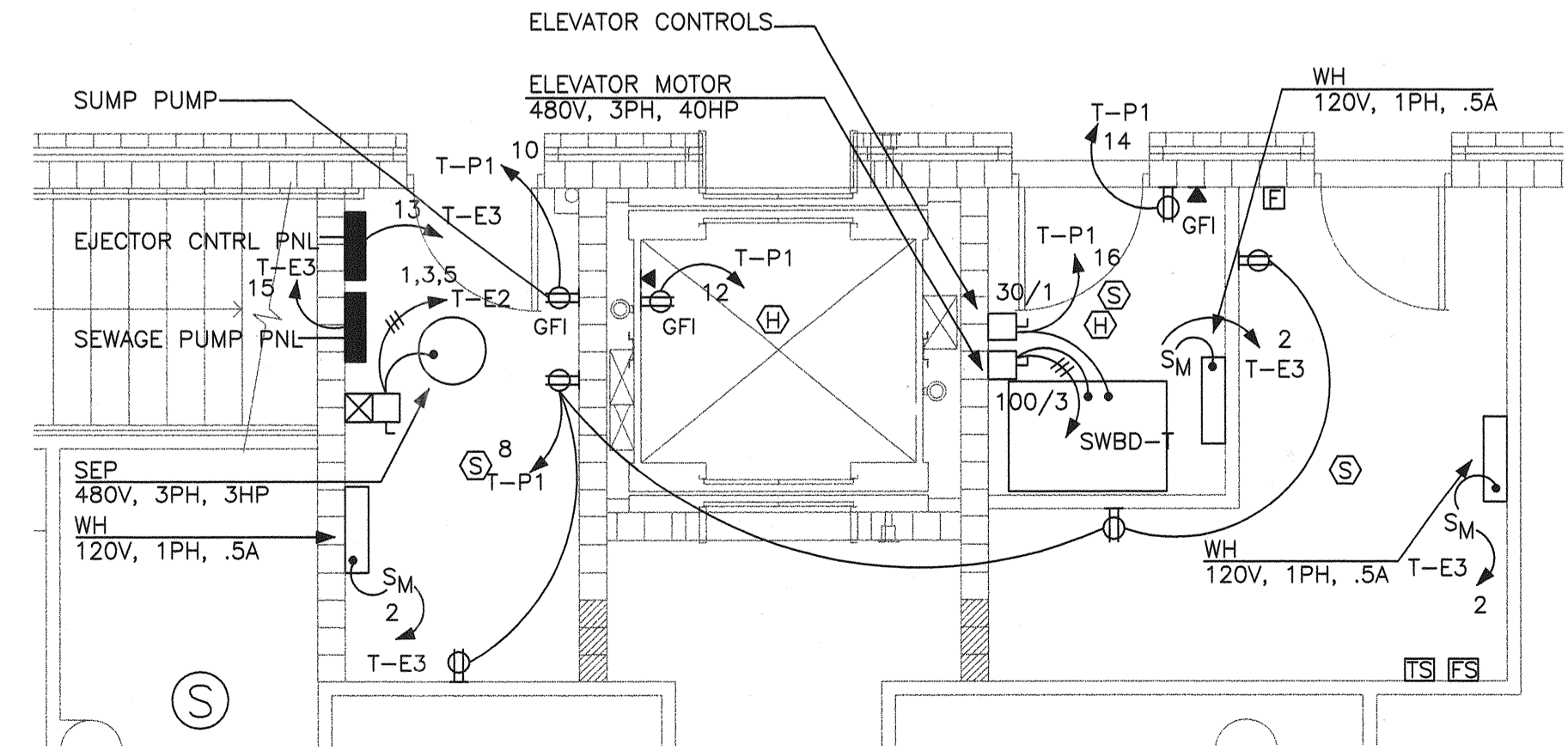


1 FIRST FLOOR POWER PLAN
1/8" = 1'-0"

BOOTH NO.	CKT A	CKT B	CKT C
#1	1	3	5
#2	7	9	11
#3	13	15	17
#4	19	21	23
#5	2	4	6
#6	8	10	12
#8	14	16	18
#9	20	22	24



3 INS BOOTH DETAILS
3/8" = 1'-0"

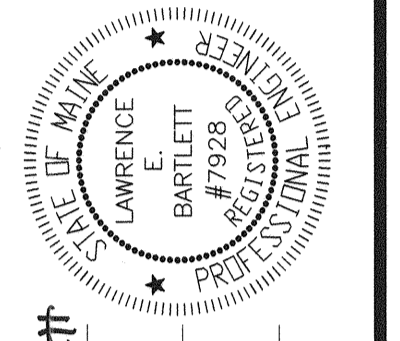


2 PARTIAL PLAN - ROOMS 115, 116, 117 & 123
1/4" = 1'-0"

Filename:

Bartlett Design
LIGHTING & ELECTRICAL ENGINEERING
1000 WASHINGTON STREET, SUITE 200
PORTLAND, MAINE 04101
TEL (207) 448-8447 FAX (207) 443-5660

STATE OF MAINE
DEPARTMENT OF TRANSPORTATION
PROJECT NUMBER 009215.00
PIN 009215.00



Lawrence E. Bartlett
SIGNATURE
7928
P.E. NUMBER
10/27/04
DATE

DATE	BY	PROJ. MGR.	DESIGN-DETAILED	CHECKED-REVIEWED	DESIGN-DETAILED2	DESIGN-DETAILED3	REVISIONS 1	REVISIONS 2	REVISIONS 3	REVISIONS 4	FIELD CHANGES
10/27/04	J.C. LEB	J.C. LEB									

CITY OF PORTLAND
OCEAN GATEWAY PHASE 1
FIRST FLOOR
FERRY TERMINAL POWER PLAN

E100-T