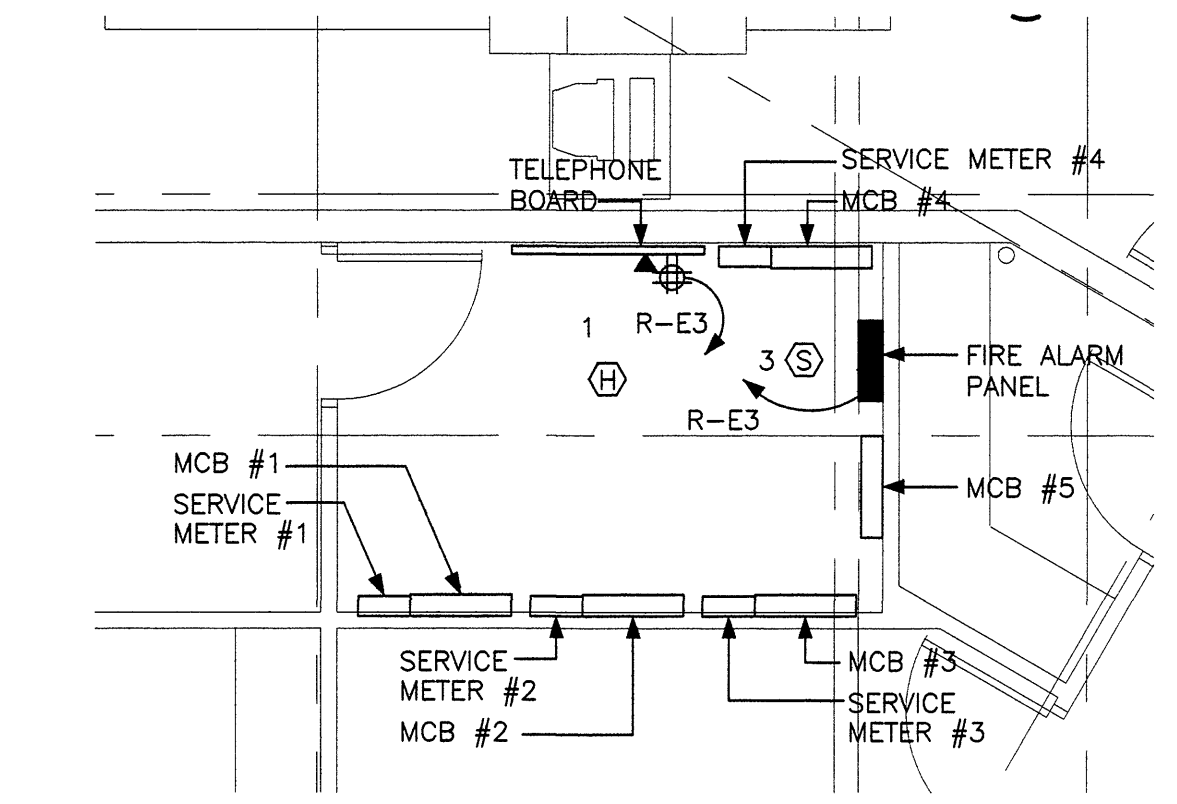
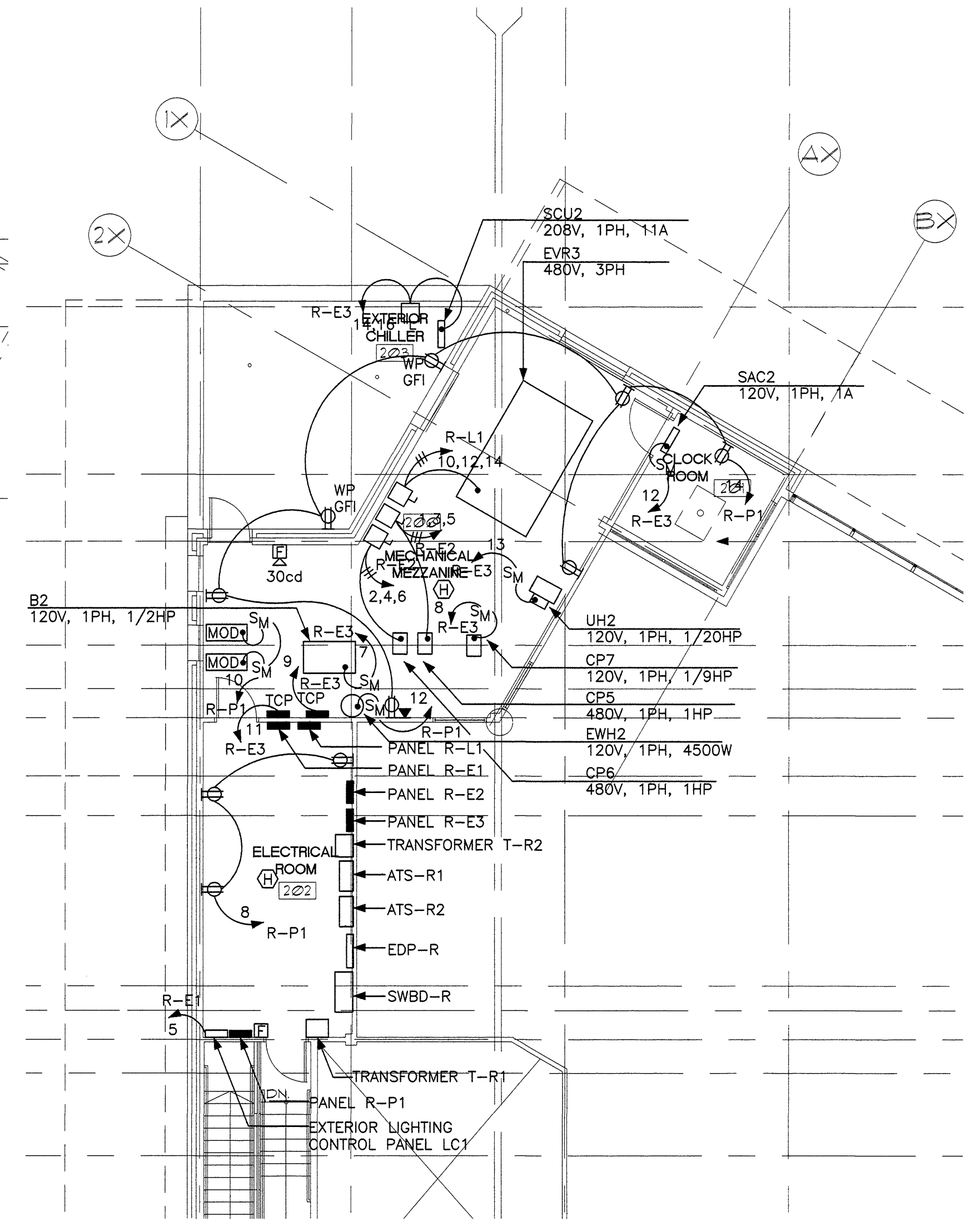


1 MAIN FLOOR POWER PLAN
1/8" = 1'-0"

NOTES:
1. VERIFY EXACT LOCATION OF ALL MECHANICAL EQUIPMENT PRIOR TO ROUGH-IN.



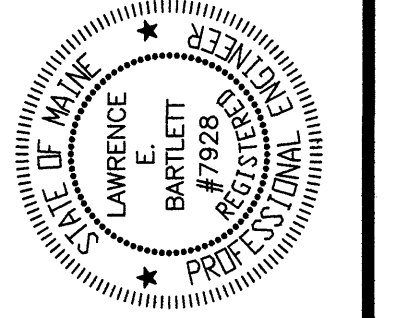
2 ELECTRICAL 104
1/4" = 1'-0"



3 MEZZANINE POWER PLAN
1/8" = 1'-0"

Bartlett Design
LIGHTING & ELECTRICAL ENGINEERING
942 WASHINGTON STREET, BATH, ME 04630
TEL (207) 443-5447 FAX (207) 443-5560

STATE OF MAINE
DEPARTMENT OF TRANSPORTATION
PROJECT NUMBER 009215.00
PIN 009215.00



Lawrence E. Bartlett
SIGNATURE
7 928
P.E. NUMBER
12/22/05
DATE

PROJ. MANAGER	PAUL POTTE	DATE
DESIGN-DETAILED	LEB	10/27/04
CHECKED-REVIEWED	LEB	
DESIGN-DETAILED	LEB	
DESIGN-DETAILED	WAP	12/23/05
REVISIONS 1		
REVISIONS 2		
REVISIONS 3		
REVISIONS 4		
FIELD CHANGES		

CITY OF PORTLAND
OCEAN GATEWAY PHASE 1
RECEIVING BUILDING
POWER PLAN

E100-R