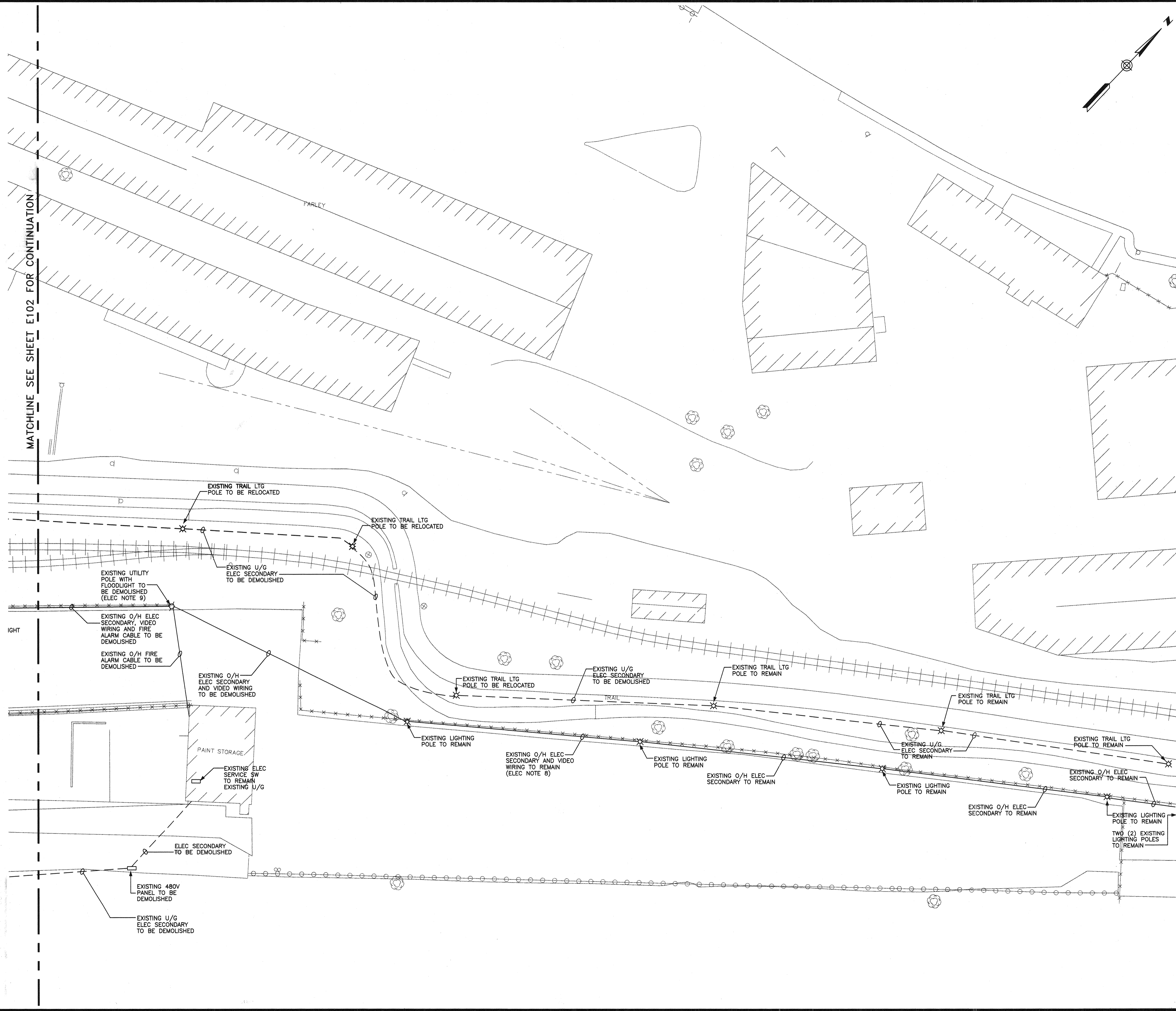


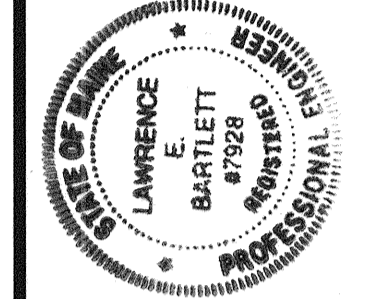
Filename: C:\103-0054\10-06-04\20343802-E101-E102-E103-E104.dwg, Oct 08, 2004 - 3:32pm



ELECTRICAL DEMOLITION NOTES:
1. SEE SHEET E101 FOR ELECTRICAL DEMOLITION NOTES.

Bartlett Design
LIGHTING & ELECTRICAL ENGINEERING
942 WASHINGTON STREET, BATH, ME 04530
TEL. (207) 443-5447 FAX. (207) 443-5580

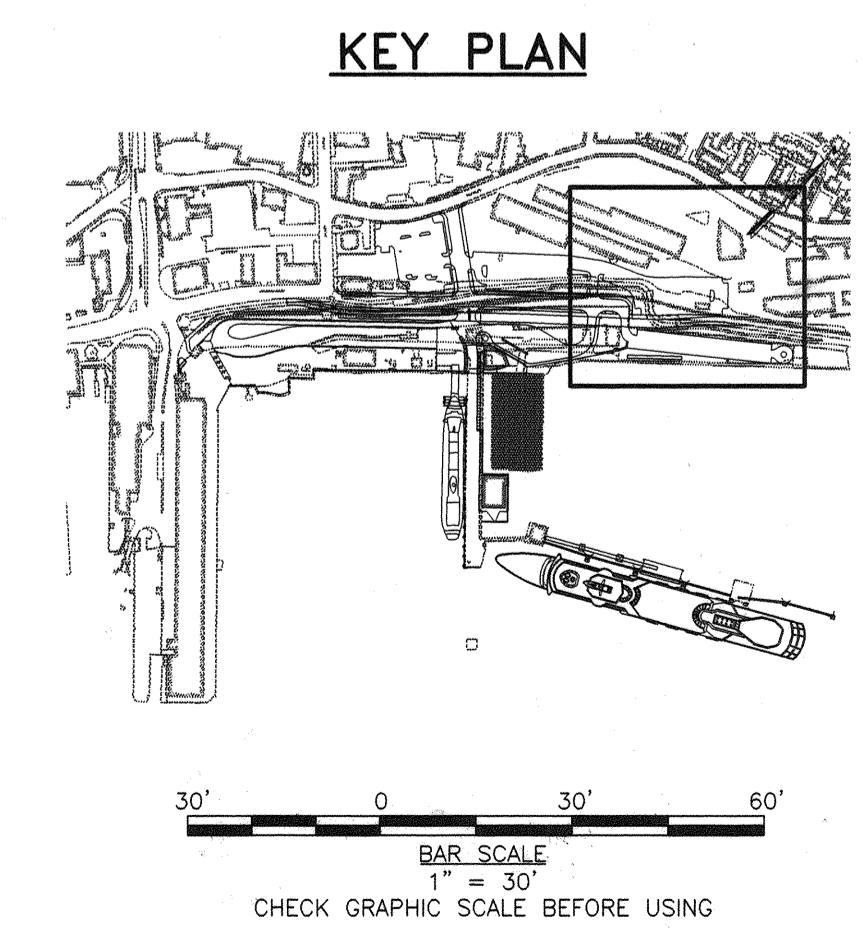
STATE OF MAINE
DEPARTMENT OF TRANSPORTATION
PROJECT NUMBER 009215.00
PIN 009215.00



Lawrence E. Bartlett
SIGNATURE
10/26
P.E. NUMBER
87958
DATE
10/27/04

PROJ. MANAGER	DATE	BY
PAUL POTLIE	10/27/04	J.C. LEB
DESIGN-DETAILED		LEB
CHECKED-REVIEWED		LEB
DESIGN2-DETAILED2		
DESIGN3-DETAILED3		
REVISIONS 1		
REVISIONS 2		
REVISIONS 3		
REVISIONS 4		
FIELD CHANGES		

CITY OF PORTLAND
OCEAN GATEWAY PHASE 1
ELECTRICAL SITE
DEMOLITION - 3



E103