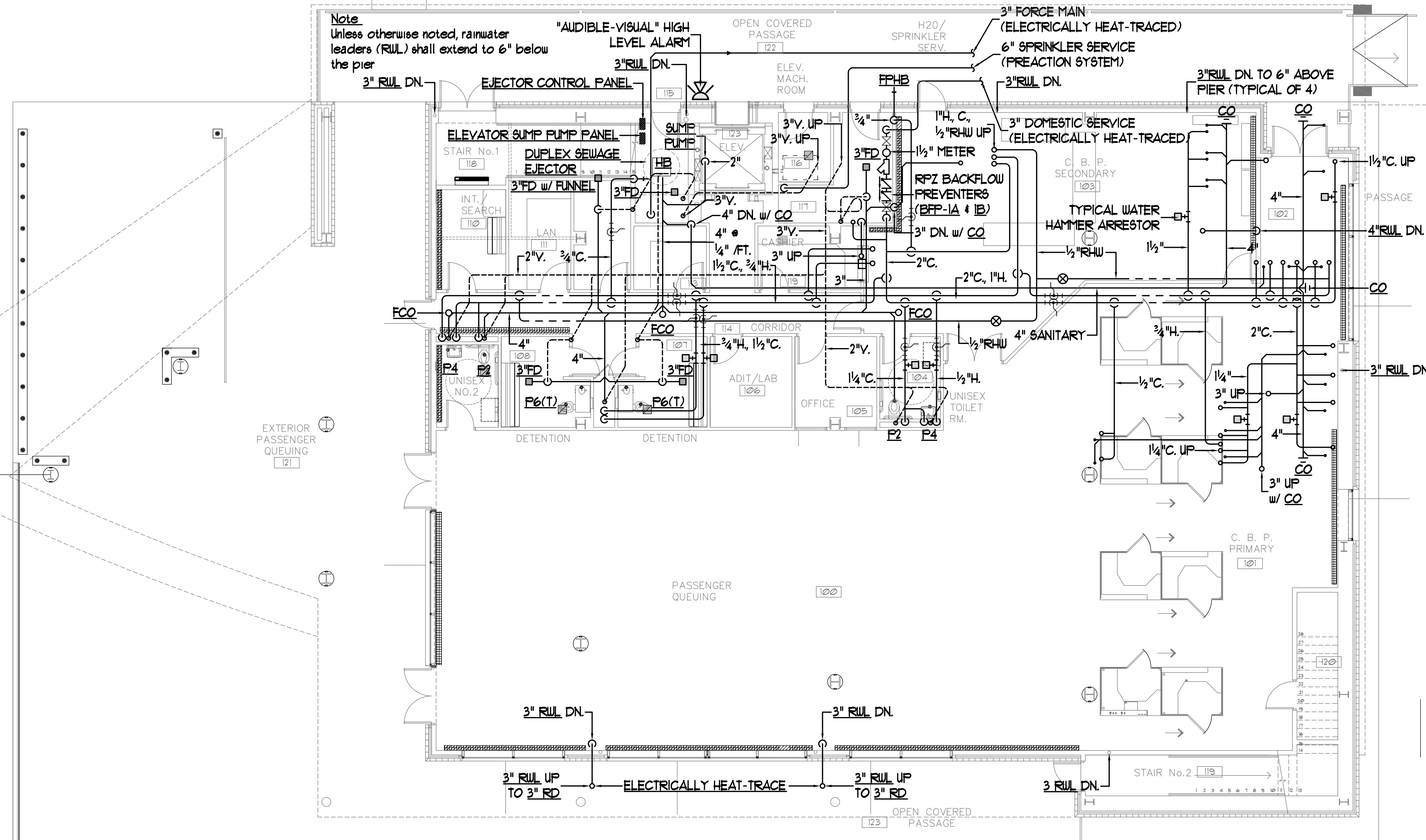


General Notes

1. All piping below the lowest floor level (and above the pier) shall be insulated and electrically heat-traced.
2. All water and sanitary piping below the walkway / ramp shall be insulated and electrically heat-traced. Provide low point drains for each service.

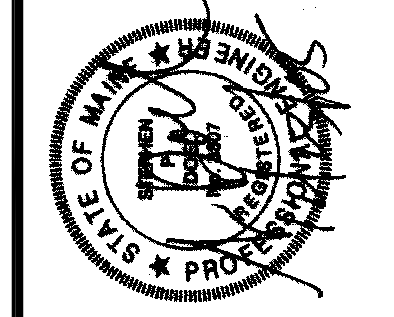
Note
Unless otherwise noted, rainwater leaders (RUL) shall extend to 6" below the pier



BENNETT ENGINEERING
CONSULTING ENGINEERS

7 Bennett Road
Freemont, Maine 04032
Tel - (207) 865-9475
Fax - (207) 865-1800
office@bennettengineering.net

STATE OF MAINE
DEPARTMENT OF TRANSPORTATION
PROJECT NUMBER 009215.00
PIN
009215.00



PROJ. MANAGER	PAUL POTTLE	DATE
DESIGN-DETAILED	SMR	10/05/04
CHECKED-REVIEWED	SP DOEL	10/05/04
DESIGN2-DETAILED2	SMR	
DESIGN3-DETAILED3	VAAP 22/VE	12/23/05
REVISIONS 1		
REVISIONS 2		
REVISIONS 3		
REVISIONS 4		
FIELD CHANGES		

CITY OF PORTLAND
OCEAN GATEWAY PHASE 1
TERMINAL BUILDING
LOWER LEVEL PLUMBING PLAN

TERMINAL BUILDING LOWER LEVEL PLAN
SCALE 1/8"=1'-0"

P100-T