

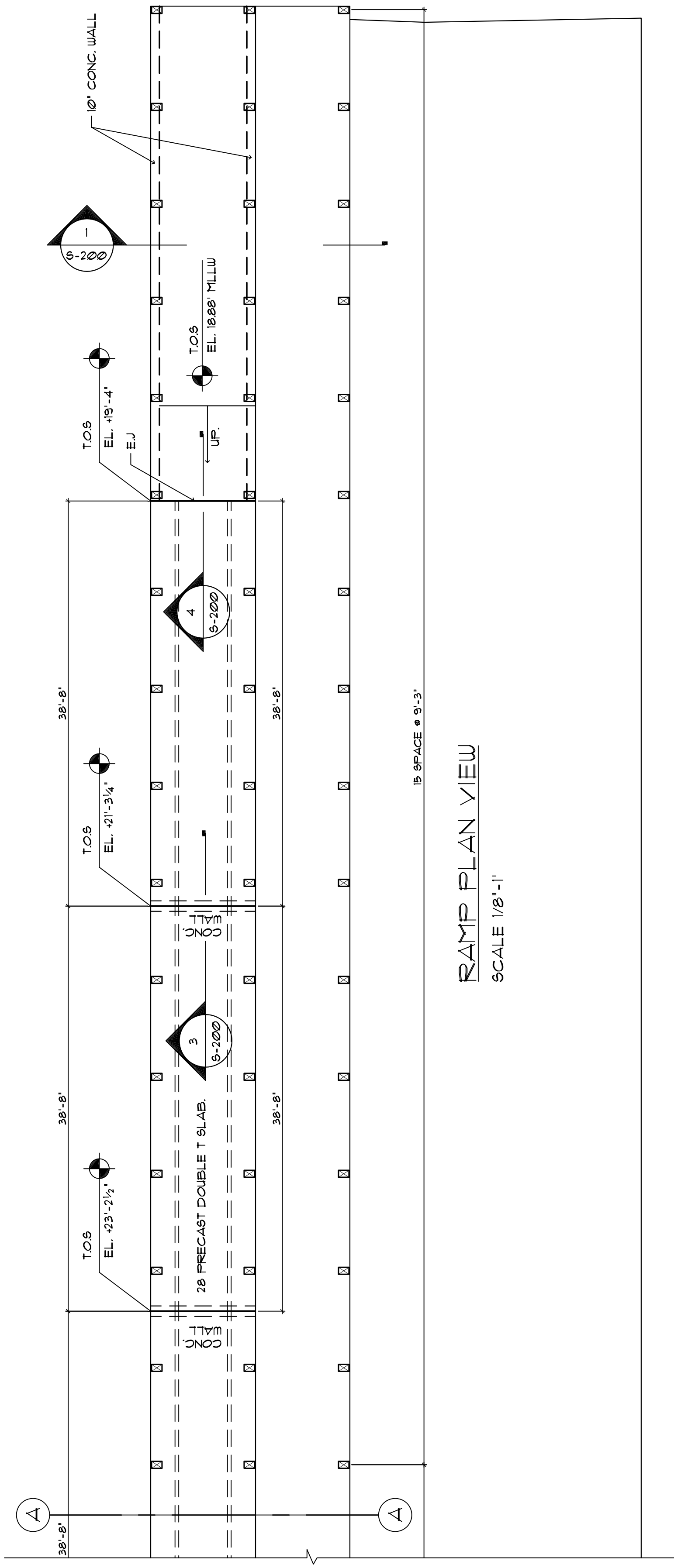
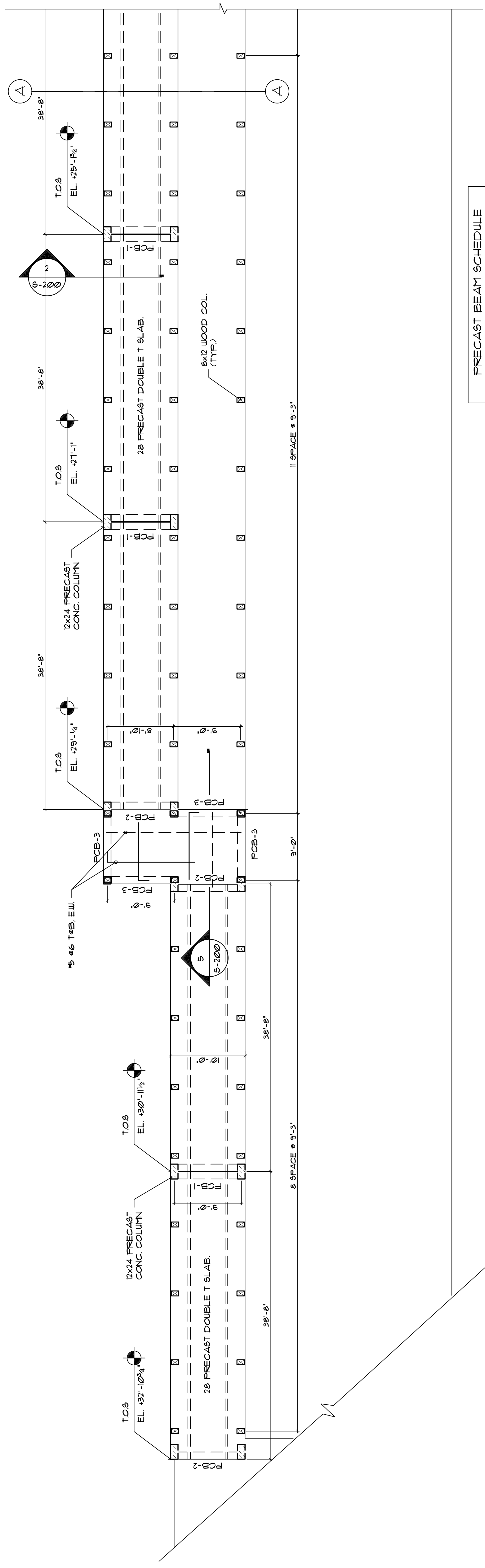
CITY OF PORTLAND
OCEAN GATEWAY PHASE 1
STRUCTURAL BUILDING
TERMINAL BUILDING

PROJ. MANAGER	PAUL POTTLE
BY	
DATE	
DESIGN-DETAILED	
CHECKED-REVIEWED	
DESIGN2-DETAILED2	
DESIGN3-DETAILED3	
REVISIONS 1	NAAP 23 DESIGN CHANGE
REVISIONS 2	
REVISIONS 3	
REVISIONS 4	
FIELD CHANGES	



STATE OF MAINE
DEPARTMENT OF TRANSPORTATION
PROJECT NUMBER 009215.00
PIN
009215.00

IN ASSOCIATION WITH:
GORRILL-PALMER CONSULTING ENGINEERS
PERATROVICH, NOTTINGHAM, & DRAKE
WINTON SCOTT ARCHITECTS
HALEY & ALDRICH



RAMP PLAN VIEW
SCALE 1/8"=1'